

398 WYOMING AVENUE | MILLBURN



sueadler 
THE #1 KELLER WILLIAMS TEAM IN NEW JERSEY **team**

kw PREMIER PROPERTIES
KELLER WILLIAMS

Each Keller Williams office is individually owned and operated.



Move right in to this charming 4 bedroom, 2½ bath exceptionally well maintained colonial on a family-friendly block in the sought after Wyoming section of Millburn. With an ideal location steps from Wyoming Elementary School, Slayton Field and the Millburn train station, 398 Wyoming Avenue is just waiting to be called home.

Drive up the tree-lined street to the front yard with abundant mature evergreen plantings and the charming walkway. Enter the front door into the Front Vestibule with an attractive French door leading to the Living Room. Continue into the Living Room with gorgeous fireplace with black slate hearth and painted brick surround, flanked by built-in bookcases. The elegant formal Dining Room featuring wood wainscoting and easy access to the Kitchen make it perfect for dinner parties or intimate gatherings with family and friends. Granite countertops and attractive stone tile backsplash contribute to a functional and stylish kitchen. The Sun Room and Family Room boast gleaming hardwood floors and an abundance of natural light and the back door to the deck make the home perfect for al fresco dinner parties or simply sipping cocktails with friends. A tasteful Powder Room rounds out the First Level.





Ready to retire for the evening? Walk up the stately staircase to the elegant 2nd Floor Landing complete with hardwood floors, linen closet with floor to ceiling shelving and an extra closet for additional storage. The large, sundrenched Master Bedroom features hardwood floors and an adjacent Full Hallway Bathroom. Two additional spacious Bedrooms feature hardwood floors, generous closets and abundant windows allowing for plenty of natural light. A Jack-n-Jill Full Bathroom with chic tile and an Office featuring windows on two exposures provide style and functionality to the home.

The Lower Level features a Recreation Room, Laundry Room and Bedroom #4/Office with plenty of storage making it perfect for a nanny suite or guest room. And do not miss the stunning outdoors! The cedar deck has room for grilling and seating and the backyard bluestone patio is perfect for hosting summer barbecues with family and friends. Don't miss this great opportunity to own a home in one of Millburn's best neighborhoods. Just steps from Wyoming Elementary School (one of the nation's best), Millburn train station and downtown Millburn shopping, 398 Wyoming Avenue is an absolute must see!



INSIDE & OUT

THE FLOOR PLAN

FIRST LEVEL

- Entry Wood Door with decorative glass sidelights
- Entry Vestibule featuring black slate flooring, baseboard molding, bead board arched ceiling, pendant light fixture, French door to Living Room
- Living Room featuring hardwood floors, baseboard molding, crown molding, wood burning fireplace with stone/brick surround and mantle, built-in bookcases, double hung windows, coat closet, traditional staircase to Second Level
- Dining Room featuring hardwood floors, wood wainscoting, crown molding, pendant light fixture, double hung windows
- Sun Room featuring hardwood floors, baseboard molding, crown molding, side-by-side double hung windows on one exposure
- Family Room featuring hardwood floors, baseboard molding, crown molding, recessed lighting, side-by-side double hung windows on one exposure, 2 additional double hung windows, closet with hanging and shelving.
- Powder Room featuring tile flooring, tile wainscoting, pendant light fixture, pedestal sink, beveled mirror, sconce, double hung window
- Kitchen featuring hardwood floors, baseboard molding, crown molding with dental detail, recessed lighting, custom cabinetry, granite countertops, stone tile backsplash, stainless steel sink, Jenn-Air oven/stove with outside exhaust, Bosch dishwasher, Amana Refrigerator/Freezer, utility closet with floor to ceiling shelving

SECOND LEVEL

- Second Level Landing featuring hardwood floors, baseboard molding, crown molding, pendant light fixture, linen closet with floor to ceiling shelving, additional closet with hanging and shelving, door to Third Level Attic, double hung window
- Master Bedroom featuring hardwood floors, baseboard molding, crown molding, sconce lighting, double hung windows, closet with hanging and shelving
- Bedroom #2 featuring hardwood floors, baseboard molding, crown molding, flush mount light fixture, sconce lighting, double hung windows, large closet with hanging and shelving, Jack-n-Jill bathroom, access to Office area
- Office featuring hardwood floors, baseboard molding, crown molding, flush mount light fixture, double hung windows
- Bedroom #3 featuring hardwood floors, baseboard molding, crown molding, flush mount light fixture, double hung windows, large closet with hanging and shelving, Jack-n-Jill bathroom, access to Office area
- Jack-n-Jill Bathroom featuring white tile flooring with decorative black tile inlay, tile wainscoting, crown molding, recessed lighting, vanity with sink and storage, medicine cabinet with mirror, walk-in shower with frosted glass door and tile surround

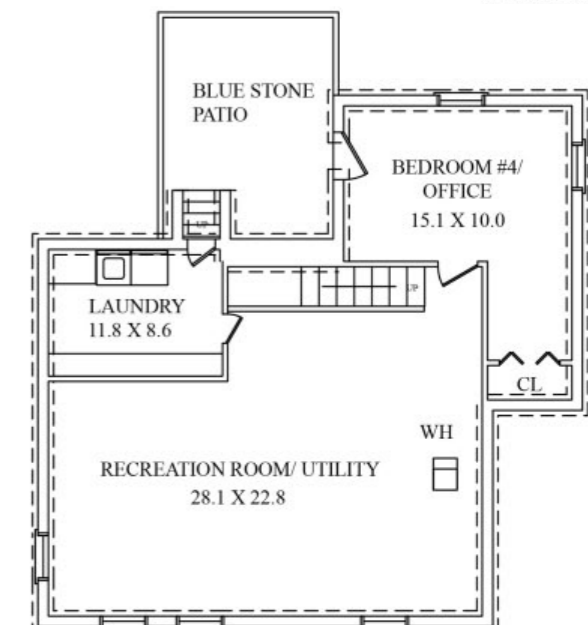
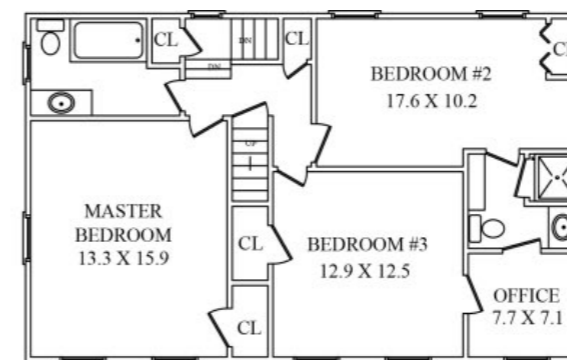
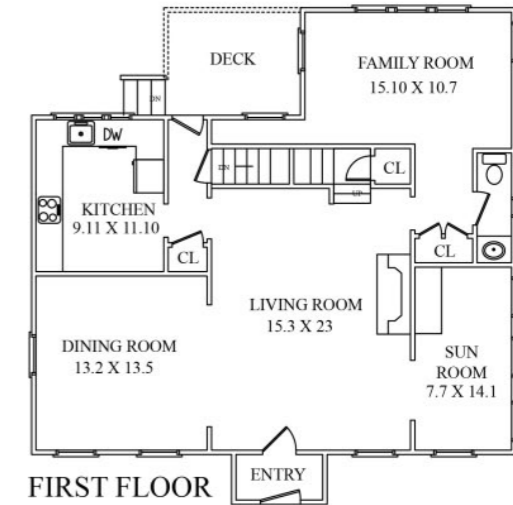
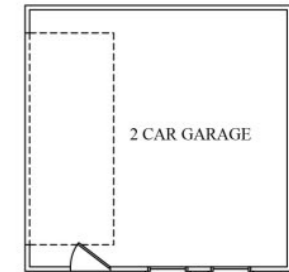
- Hallway Full Bathroom featuring tile flooring, tile wainscoting, vanity with storage, flush mount light fixture, shower over tub with subway tile surround, double hung window

LOWER LEVEL

- Traditional wood staircase to Lower Level
- Recreation Room/Utility Room featuring painted concrete flooring, bead board wall on two exposures, built-in storage area under stairs with shelving
- Laundry Room featuring tile flooring, baseboard molding, built-in workshop cabinetry on one exposure with countertop and storage, utility closet, Whirlpool top load washer and front load gas dryer, door to outside
- Unfinished storage area
- Bedroom #4/Office featuring tile flooring, baseboard molding, recessed lighting, double door closet, door to outside bluestone patio and backyard

ADDITIONAL FEATURES & UPGRADES

- Large, flat, partially fenced back yard with mature evergreen plantings
- Wood deck featuring seating area with steps down to Weber grill
- Bluestone patio and walkway to garage
- Two-car electrified garage with room for hanging and storage of tools
- Attic with walk-in closet, floor to ceiling hanging and shelving and additional shelves and storage cabinets
- Whole house fan in ceiling of second floor landing
- Wyoming section of Millburn with US News Gold Medal schools
- Steps to Wyoming school (top NJ and national elementary school) without crossing a street
- Steps to Slayton field with access to tennis courts, baseball field, basketball court and playground
- Millburn train station within walking distance



CELL: 973.936.9129
OFFICE: 973.376.0033 x101
EMAIL: info@sueadler.com

sueadler.com/398Wyoming

All information deemed reliable but not guaranteed

sueadler 
THE #1 KELLER WILLIAMS TEAM IN NEW JERSEY team

kw PREMIER PROPERTIES
KELLERWILLIAMS.