

80 DALE DRIVE | SUMMIT





Drive up to 80 Dale Drive and you know you have arrived somewhere special. A white washed brick exterior, charming shutters and a bluestone walkway all contribute to this home's curb appeal. This pristine 5 Bedroom, 3 1/2 Bath home is in the heart of Summit's coveted Highlands Section close to Franklin Elementary and Glenside Field.

Walk up the elegant bluestone walkway and enter through the classic wood door. Gracefulness abounds in the warm and welcoming Entry Foyer complete with hardwood floors, Coat Closet and an elegant staircase leading to the second level.

The classic front to back Living Room is an entertainer's dream with its exceptional statement fireplace and huge windows (one with a window seat) where light literally pours in. Flow easily into the refined Formal Dining Room with another stunning picture window/window seat overlooking the picturesque property. The Dining Room connects easily to the impressive Gourmet Chef's Kitchen that will satisfy any cook's desire. Crisp white wood custom cabinetry, granite countertops, top of the line stainless appliances and a dreamy Breakfast Area make the Kitchen extraordinary. A Butler's Pantry/Laundry Room is conveniently located around the corner and offers easy outdoor access. Prepare to be amazed by the open and airy Family Room flowing easily from the Kitchen area. Entertaining is a delight with the cozy fireplace with on trend tile surround, custom built-ins and magnificent French doors bringing in the light and greenery from the yard. A tasteful Powder Room rounds out the first level.





Ready to retire for the evening? Enjoy complete privacy in the Master Bedroom Suite. Oversized windows and two Walk In Closets make this an ideal retreat. The Master Bath, with a generous vanity and built-in Jacuzzi tub, tastefully completes this space. Bedrooms 2, 3 and 4 are roomy, boast tons of sunlight and include generous closets. Bedrooms 2 - 4 share the well-appointed Full Hall Bathroom.

And that's not all! The large Lower Level provides plenty of additional living space with a sizable Recreation Room/Children's Playroom perfect for movie watching or family game night. A Guest Bedroom and charming Full Bath are ideal for visiting guests or an Au Pair. A Mud Room Area leading directly to the 2 Car Garage ensures that not a thing will be out of place.

Another jewel of 80 Dale Drive is the scenic, park-like property featuring immense privacy, mature specimen trees, plenty of room for play and a spacious Bluestone Patio. Whether it's al fresco dining or cocktails with friends, this space exudes complete relaxation.

With its prestigious neighborhood, close proximity to Midtown Direct Train, top-notch schools and convenience to Summit's fantastic shopping/restaurants, 80 Dale Drive is an absolute gem!





I N S I D E & O U T

FIRST LEVEL

- Entry Foyer featuring hardwood floors, recessed lighting, baseboard molding, crown molding, staircase to Second Level, Double Door Coat Closet
- Front to Back Living Room featuring hardwood floors, recessed lighting, baseboard molding, gas fireplace with custom millwork mantle, crown molding, custom window treatments and woven shades, oversized windows including picture window with window seat, picture window at rear
- Gourmet Chef's Kitchen featuring hardwood floors, crisp white custom cabinetry including glass door cabinetry, granite countertops, tile backsplash, recessed lighting, stainless hood, Breakfast Area with windows and lantern, Double French door Pantry, high end stainless steel appliances, painted soothing gray throughout, crown molding, baseboard molding
- Laundry Room/Butler's Pantry featuring hardwood floors, door to backyard, built in cabinetry including glass door cabinetry, granite countertops, tile backsplash, stackable washer dryer, beverage refrigerator
- Dining Room featuring hardwood floors, chair rail, chandelier, wallpaper, picture window with window seat, custom window treatments and woven shades, baseboard molding, crown molding, double doors to Kitchen
- Family Room open to Kitchen featuring hardwood floors, wood burning fireplace with custom millwork mantle

and tile surround, custom built ins flanking fireplace with open and concealed storage, double French doors with floor to ceiling sidelites, recessed lighting, chair rail, baseboard molding, crown molding, Bose sound system with mounted speakers

- Powder Room featuring wallpaper, pedestal sink, custom valance

SECOND LEVEL

- Second Floor Landing featuring 2 Linen Closets and 1 floor to ceiling medicine cabinet
- Master Bedroom Suite featuring carpeting, oversized windows, custom window treatments, 2 Walk In Closets, baseboard molding, crown molding, Bathroom featuring marble flooring, double wood vanity with marble top, 2 built in medicine cabinets with additional storage, blinds, built in deep soaking tub, glass door stall shower with built-in bench, wallpaper, tile wainscoting, recessed lighting, sconces
- Bedroom #2 featuring carpeting, wallpaper, oversized windows, Double Door custom Closet, baseboard molding, crown molding, valences
- Bedroom #3 featuring carpeting, oversized windows, blinds, Custom Closet, baseboard molding, crown molding
- Full Hall Bathroom featuring floor tile, tile wainscoting, double wood vanity, shower over tub with tile surround, wood blinds

- Bedroom #4 featuring hardwood floors, bead board wainscoting, custom window treatments, recessed lighting, baseboard molding, crown molding, chair rail, large walk in Closet with window

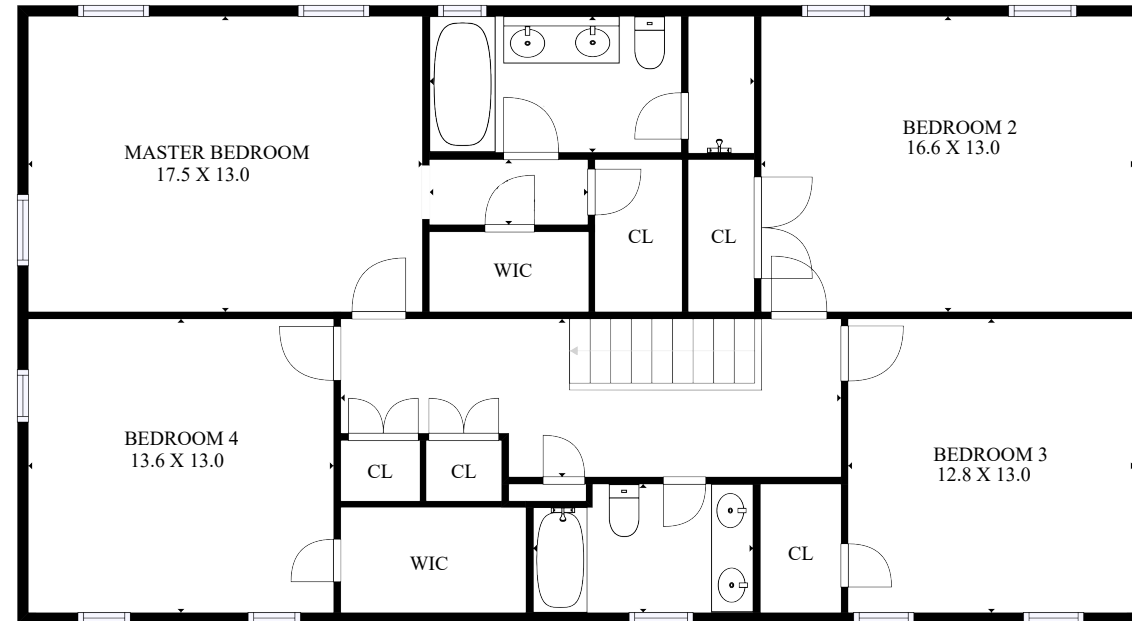
LOWER LEVEL

- Walk Out Recreation Room featuring carpeting, recessed lighting, door to yard
- Bedroom #5 featuring carpeting, recessed lighting, baseboard molding, built-in shelving, Closet
- Full Bathroom featuring tile flooring, bead board vanity with marble top, shower over tub with tile surround, sconces, recessed lighting, fan
- Mud Room Area featuring tile flooring, recessed lighting, Coat Closet
- 2 Car Garage

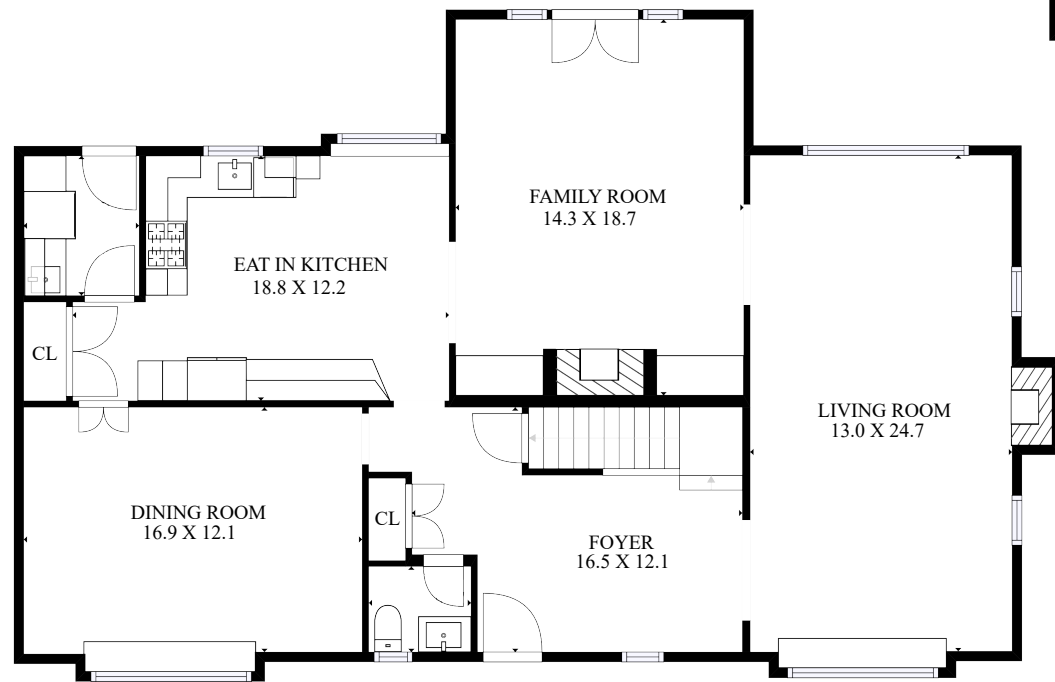
BACKYARD/LANDSCAPING

- Over 1/3 Acre
- Bluestone front walkway with brick risers
- Bluestone Patio
- Grassy Play Area
- Play Set
- Mature specimen trees, landscaping with pachysandra, blooming perennials

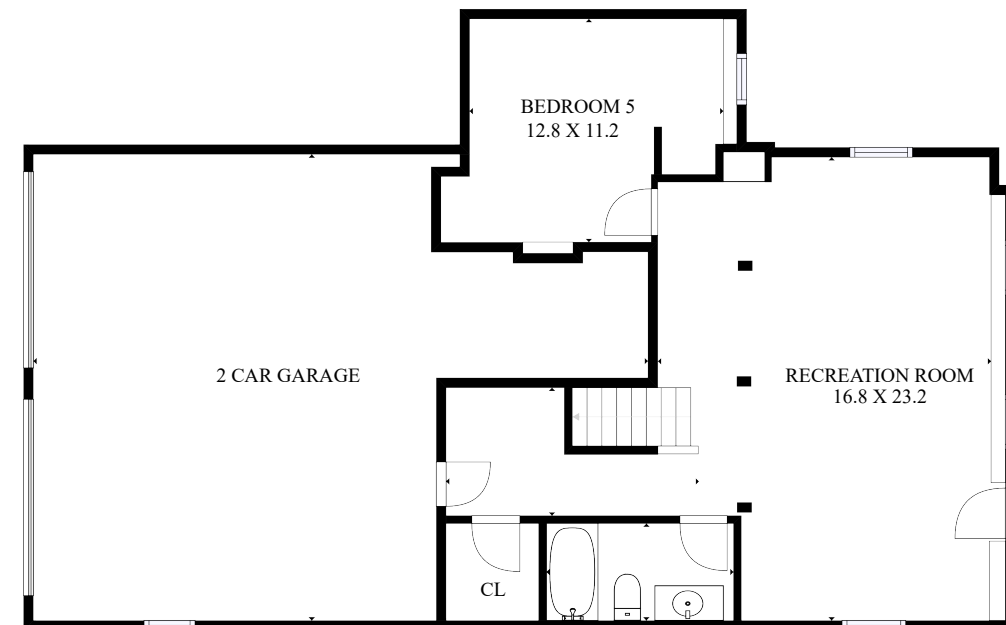
THE FLOOR PLAN



SECOND LEVEL



FIRST LEVEL



LOWER LEVEL

NOT TO SCALE - This floor plan is provided for illustration purposes only.
Room positions and dimensions are approximate and should be independently measured for accuracy



CELL: 973.936.9129
OFFICE: 973.376.0033 x101
EMAIL: info@sueadler.com
sueadler.com/80Dale

sueadler 
THE #1 KELLER WILLIAMS TEAM IN NEW JERSEY **team**

All information deemed reliable but not guaranteed

kw PREMIER
PROPERTIES
KELLERWILLIAMS.