

80 TALL OAKS DRIVE | NEW PROVIDENCE, NJ



**kw** PREMIER  
PROPERTIES  
KELLER WILLIAMS

Each Keller Williams office is individually owned and operated.

**sueadler**   
THE #1 KELLER WILLIAMS TEAM IN NEW JERSEY **team**



Enchanting 3 bedroom, 1½ bath colonial on a family-friendly block in the sought after Tall Oaks section of New Providence. Perfect condition with gorgeous original architectural details left intact! With an exceptional location close to NYC transportation, schools and recreation, 80 Tall Oaks Drive is waiting to be called home.

Drive up the tree-lined street to the charming bluestone walkway and enter the warm front door to the bright and airy Foyer. Move into the Living Room with a stately fireplace flanked by beautiful original built-in bookcases and decorative picture windows. The open and airy adjacent Office, with spectacular bowed windows and window seat, makes working from home a dream. Walk through to the elegant formal Dining Room featuring gleaming hardwood floors and an abundance of natural light making it perfect for extravagant dinner parties or intimate gatherings with family and friends. The layout allows you to flow easily into the extraordinary Kitchen, with crisp, white wood shaker-style cabinets, white countertops and top of the line stainless steel appliances. And as if that wasn't enough, step down into the Sun Room, which is the real showstopper of the home. The screened-in windows on three exposures and a door flowing to the bluestone deck and private backyard make the home perfect for al fresco dinner parties or simply sipping cocktails with friends. A tasteful Powder Room rounds out the First Level.





Ready to retire for the evening? Walk up the stately staircase to the elegant 2<sup>nd</sup> Floor Landing complete with hardwood floors and an original Linen Closet with floor to ceiling shelving and drawers. Wander into the lovely Master Bedroom featuring stunning original architectural details, beautiful arched ceiling alcove and generous Walk-In Closet/Dressing Area. Spacious Bedrooms 2 and 3 feature gorgeous vaulted ceilings with arched alcoves and abundant windows allowing for plenty of natural light. A Full Hallway Bathroom with tasteful tile and a chic pedestal sink round out the 2<sup>nd</sup> Floor.

And there's more! The Lower Levels boasts a Recreation Area/Children's Playroom featuring a stunning fireplace flanked by open built-in bookcases. There's also a work area and desk perfect for doing homework or arts and crafts. You'll never want to leave this beautiful space. Additionally, the Lower Level boasts an enormous Laundry Area and Storage Area to ensure that nothing will be out of place.

And that's not all! The bluestone patio has room for grilling and the private fenced-in backyard make hosting a party or relaxing on a summer afternoon a joy. Close to highly rated schools, transportation to NYC, and parks and recreation, 80 Tall Oaks Drive an absolute must see!



# INSIDE & OUT

## FIRST LEVEL

- Entry Door with sidelights and Glass Screen Door
- Entry Foyer featuring hardwood floors, baseboard molding, crown molding, recessed lighting, walk-in coat closet, Traditional Staircase to Second Level
- Living Room featuring hardwood floors, baseboard molding, crown molding, recessed lighting, wood burning fireplace with stone and custom millwork surround flanked by original built-in bookcases with open shelving and decorative picture lights, dual 2 light sconce, French doors to Office, double hung windows with custom window treatments
- Office featuring carpet, baseboard molding, crown molding, beadboard ceiling, bowed window with window seat with storage, decorative picture windows, double hung windows with custom blinds
- Dining Room featuring hardwood floors, baseboard molding, crown molding, designer chandelier, double hung windows with custom window treatments
- Kitchen featuring tile flooring, baseboard molding, crown molding, recessed lighting, flush mount light fixture, white shaker style cabinetry (some glass paneled), white countertops, tile backsplash with decorative inlay, porcelain sink with commercial style gooseneck faucet, KitchenAid stainless steel range, KitchenAid stainless steel dishwasher, KitchenAid stainless steel Refrigerator/Freezer, KitchenAid stainless steel built-in microwave, bowed window with mantle, food pantry
- Powder Room featuring tile floors, baseboard molding, wallpaper, corner ceramic sink, flush mount light fixture, double hung window with custom window treatment
- Screened Porch featuring stone floors, beadboard wainscoting, designer pendant light fixtures, vaulted ceiling, windows with screens on 3 exposures, wood and brick wall on one exposure, bench with storage on one exposure, glass door to outdoor bluestone patio

## SECOND LEVEL

- Traditional Staircase with runner to Second Level
- Second Level Landing featuring hardwood floors, baseboard molding, recessed lighting, double hung window, linen closet
- Master Bedroom featuring carpet, baseboard molding, vaulted ceiling, double hung windows with custom window treatments, arched ceiling alcove with double hung window, Walk-In Closet/Dressing Area with custom white built-in cabinetry, hanging and shelving and double hung window with custom blinds, original built-in drawer
- Bedroom #2 featuring carpet, vaulted ceilings, recessed lighting, beadboard wainscoting on two exposures, beadboard walls on two exposures, double hung windows with custom window treatments, dual closets with hanging and storage
- Bedroom #3 featuring carpet, baseboard molding, vaulted ceiling, recessed lighting, double hung window with custom window treatment, arched ceiling alcove with double hung window with custom window treatments, walk-in closet
- Full Hallway Bathroom featuring tile flooring with decorative inlay, tile baseboard molding, recessed lighting, pedestal sink, shower over tub with subway tile surround, double hung window with custom window treatment, recessed mirrored medicine cabinet

## LOWER LEVEL

- Traditional wood staircase with carpet to Lower Level
- Recreation Room featuring carpet, baseboard molding, crown molding, recessed lighting, gas fireplace with brick and custom white millwork surround flanked by built-in open bookcases, desk area featuring white custom countertop with shelving and corkboard wall
- Laundry Room/Storage Area featuring tile flooring, Cabrio top load washer and Whirlpool front load dryer, built-in shelving, entry to two car garage

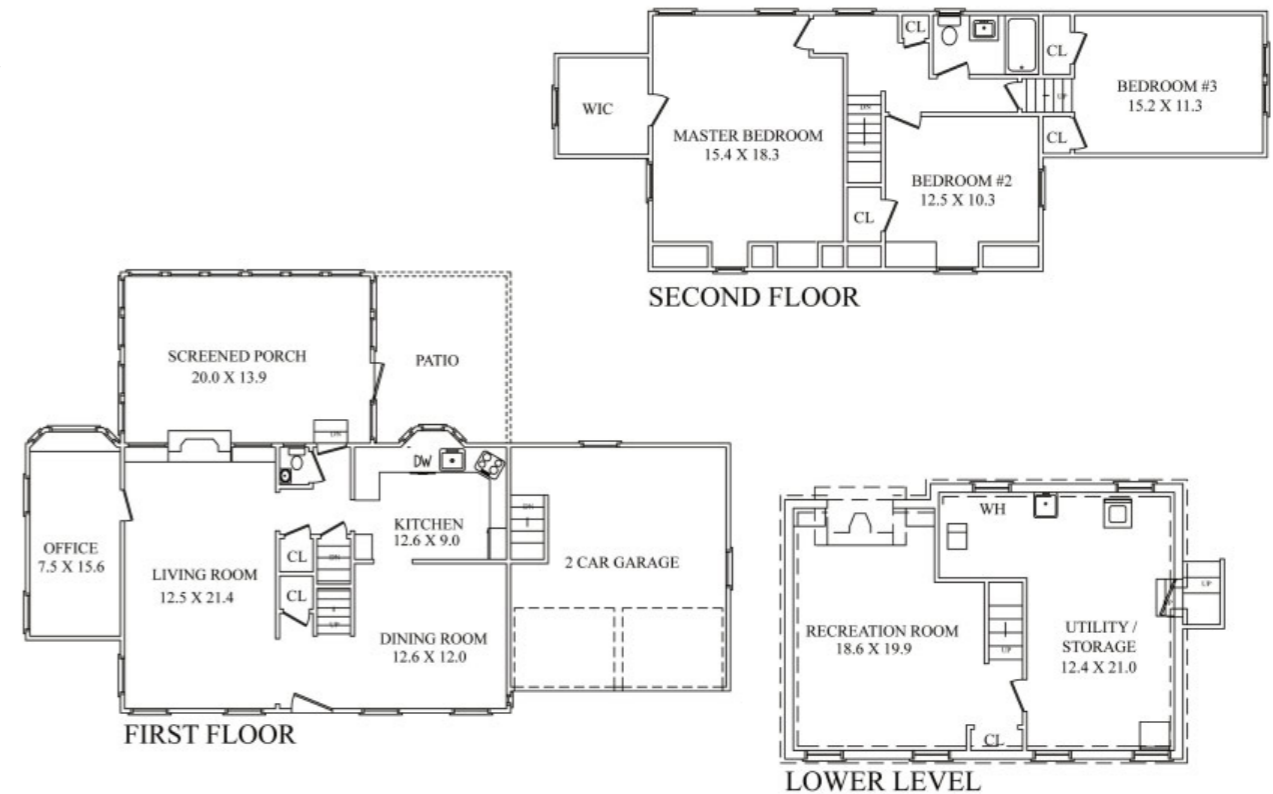
## ADDITIONAL FEATURES & UPGRADES

- New Providence location with Summit mailing address
- Large, fully fenced-in private backyard with professional landscaping and 4 zone irrigation system
- Bluestone patio with grilling and seating area
- Playset
- Electrified 2 car garage with hanging and storage for tools
- Alarm system (2016)
- French drains
- Water powered backup sump pump
- AC unit (2016)
- Furnace and hot water heater (2011)
- Kitchen appliances purchased within past three years
- Driveway (2018)
- Washer and dryer (2018)



CELL: 973.936.9129  
 OFFICE: 973.376.0033 x101  
 info@sueadler.com  
[sueadler.com/80TallOaks](http://sueadler.com/80TallOaks)

## THE FLOORPLANS



NOT TO SCALE - This floor plan is provided for illustration purposes only. Room positions and dimensions are approximate and should be independently measured for accuracy