

130 Oakland Road

Maplewood, New Jersey



*Sue Adler*  
**KELLER WILLIAMS**  
PREMIER PROPERTIES

**sueadler**   
THE #1 KELLER WILLIAMS TEAM IN NEW JERSEY team

Each Keller Williams office is independently owned and operated.



Welcome to 130 Oakland Road, a stunning Tudor-style home with modern upgrades throughout that blend perfectly with the stunning traditional details. With three spacious floors, four bedrooms, and plenty of amenities, this house ensures your family stays comfortable and has room to grow. When you open the front door, you'll notice the classic features of 130 Oakland right away: the traditional mudroom with coat closet, the impressive center staircase leading to the second floor, and all the lovely wall sconces and chandeliers that adorn the First Level. The large Living Room features gleaming dark hardwood floors and first-rate custom window treatments that continue throughout the First Floor. Off the grand Living Room is a cozy Family Room, ideal for a private reading nook.

On the other side of the home, you'll find the striking formal Dining Room with beautifully detailed moldings and ample room for a large dining table. The Dining Room is connected to the huge, completely updated Kitchen. An expanse of pristine granite countertops and an abundance of cabinet and pantry space make this Kitchen a dream come true for chefs of all levels. Every appliance in the kitchen is high-end stainless steel from GE. Next to the Kitchen is a Power Room for guests as well as an additional coat closet. There is also access to the Basement, a clean and dry space that is just waiting to be fully finished!





The Second Floor is home to three Bedrooms, a Hallway Bathroom, Linen Closet, and Master Bathroom. The large Master Bedroom boasts a convenient cedar lined closet plus an additional walk-in closet to organize all your important clothing items and accessories. The en-suite Master Bathroom includes a stall shower and vanity. You'll be blown away by the Hallway Bathroom on this floor, with gorgeous tile backdrop and a deep soaking Jacuzzi tub with jets. Walk up the next set of stairs to the Third Floor, which features an additional bedroom, a bonus room plus another half Bathroom. There is a deep closet in the hallway for storage plus access to the spacious attic crawl space.

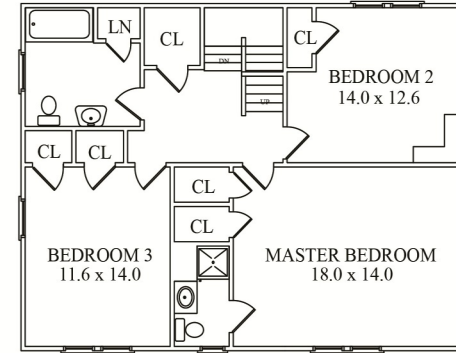
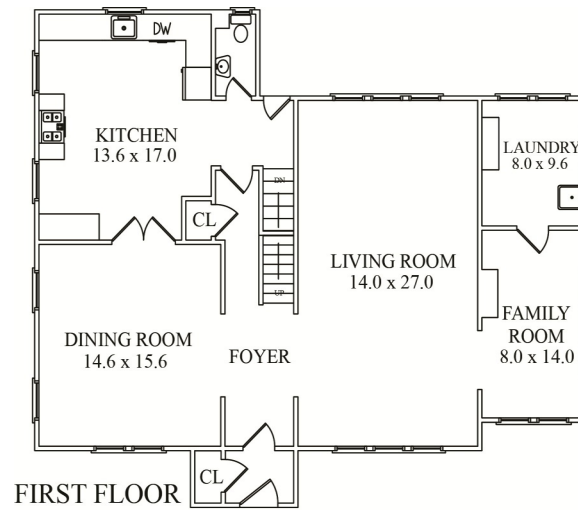
Outside, you'll have a nice-sized, fenced-in backyard, impressive landscaping, a long driveway, and a detached garage. 130 Oakland has everything you and your family need in a home and more. Maplewood is a charming community with a bustling downtown area that includes restaurants, a movie theater, local shops and more. You get the benefits of small-town charm but you'll only be less than 45-minutes away from New York City by major highway or the Midtown Direct train line on NJ Transit. In Maplewood, you will be close to the Garden State Parkway, New Jersey Turnpike, Route 78, Route 24, and Route 280.



# Inside and Out...

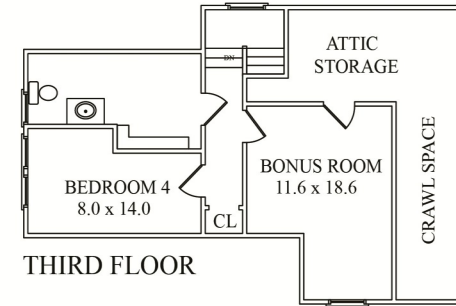
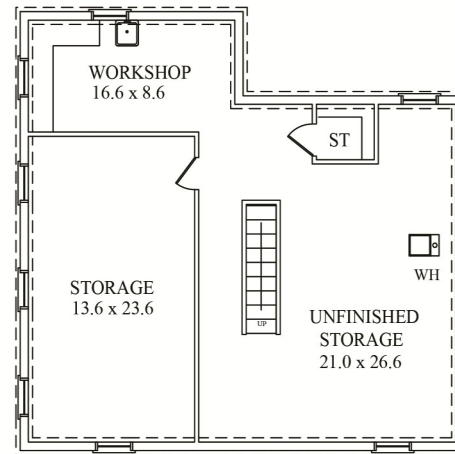
## First Level

- Foyer with tiled mudroom, hardwood floors in entranceway, and two coat closets
- Living Room with hardwood floors, crown molding, and custom window treatments
- Family Room with hardwood floors, crown molding, and custom window treatments
- Dining Room with hardwood woods, crown molding, chair rail and window treatments
- Kitchen with hardwood floors, granite counters, cherry cabinets, stainless appliances including a GE refrigerator, GE dishwasher, and GE oven, ceiling fan, and recessed lighting
- Powder room with tile floors
- Laundry Room with tile floors, washer/dryer, and storage cabinets



## Second Level

- Master Bedroom with wall-to-wall carpet, cedar closet, walk-in closet, chandelier, and en-suite bathroom
- Master Bathroom with tile floors, vanity, and stall shower
- Bedroom #2 with hardwood floors and closet
- Bedroom #3 with hardwood floors, cedar lined closet, and standard closet
- Hallway Bathroom with tile floors, vanity, Jacuzzi tub with jets, shower, and tile backsplash in bathtub
- Linen Closet in hallway



NOT TO SCALE - This floor plan is provided for illustration purposes only. Room positions and dimensions are approximate and should be independently measured for accuracy.

## Third Level

- Bonus Room with hardwood floors and track lighting
- Bedroom #4 with hardwood floors
- Half bathroom with tile floors, vanity, and large mirror
- Deep Hallway Closet with access to crawl space

## Lower Level

- Unfinished basement with concrete floors, additional room, and storage

## Additional Features and Upgrades

- Hot Water Heater (2015)
- Updated Second Floor Hallway Bathroom (2012)
- Furnace (2012)



*Sue Adler*  
**KELLER WILLIAMS**  
 PREMIER PROPERTIES



Cell: (973) 464-9129  
 Office: (973) 376-0033 x101  
 Sue@SueAdler.com  
 www.sueadler.com/130Oakland

**sueadler**   
 THE #1 KELLER WILLIAMS TEAM IN NEW JERSEY team