

# 116 Wellington Avenue

Short Hills, New Jersey



*Sue Adler*  
**KELLER WILLIAMS**  
PREMIER PROPERTIES

**sueadler**   
THE #1 KELLER WILLIAMS TEAM IN NEW JERSEY team

Each Keller Williams office is independently owned and operated.



For your next home, settle into 116 Wellington Avenue in sought after Short Hills, NJ. Situated on a beautiful tree-lined street, 116 Wellington has the charm, vintage details, and modern amenities you and your family can enjoy for years to come. Boasting undeniable curb appeal, this home features lovely front landscaping and a picturesque blue stone front porch.

As soon as you open the front door, a warm Foyer greets you, with a convenient coat closet on your left. Walk inside to find a cozy Den and convenient Powder Room to the left of the staircase and a large Living Room on your right. Your new Living Room is spacious, featuring a stone fireplace as a focal point with convenient built-in bookshelves. Host your friends and family in the formal Dining Room, complete with hardwood floors, custom window treatments, and access to the Backyard. Enjoy an iced tea on rear deck during the warm months and revel in the shady backyard. The eat in Kitchen boasts a built-in bench along the window, large pantry, stainless steel Kitchenaid appliances, a useful island, and plenty of counter space, as well as ample dark wood cabinets to keep all of your kitchen gadgets organized. Downstairs, the finished Basement has wall-to-wall carpeting and enough room for your TV room or office, plus an incredible amount of additional storage space. In the Laundry Room, utilize the modern convenience of your Whirlpool washer and dryer, while the history lover can appreciate the historical details of the original washroom sink and laundry washing area, which are still intact. On the Second Floor, you'll find three bedrooms, all with hardwood floors and ample closets and a convenient Hall Bathroom. Not to be missed, the Master Bedroom is large, with a breezy ceiling fan, a cedar-lined closet, and additional closet for every item of clothing and accessory. The updated ensuite Master Bedroom has a marble-topped vanity, tiled wall detailing, and a large stand-up shower with an added seat.



At 116 Wellington, you will be just a few blocks from the Short Hills train station, as well as the nationally renowned Millburn High School and #1 ranked in the nation Glenwood Elementary School. You can enjoy local conveniences such as the Papermill Play House, the Mall at Short Hills, and all the first-rate shops and dining in downtown Millburn. Hop on nearby Route 24, Route 78, or the Garden State Parkway to get just about anywhere in the state, or take a 45-minute train ride on NJ Transit to Midtown Manhattan.

# Inside and Out...

## FIRST LEVEL

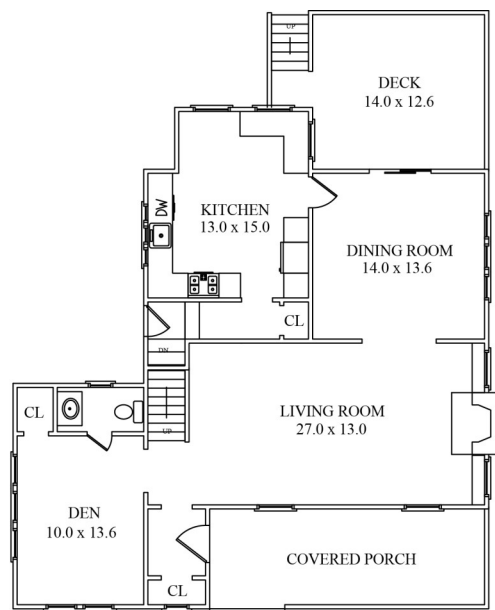
- Foyer with hardwood floors coat closet
- Living Room with hardwood floors, stone fireplace with mantel, built-in bookshelves and crown molding
- Den with hardwood floors, window blinds and deep closet with shelves
- Powder Room with marble vanity and tile floors
- Dining Room with hardwood floors, crown molding, windows with drapes and glass doors to outdoor deck with drapes
- Eat-in Kitchen with hardwood floors, Breakfast Area with window seating, freestanding island, stainless steel Kitchenaid dishwasher, range, built-in microwave and refrigerator, and extra-deep stainless steel sink

## SECOND LEVEL

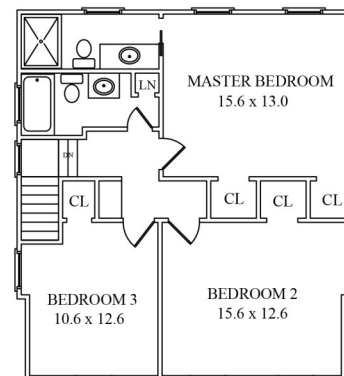
- Master Bedroom with hardwood floors, window blinds, ceiling fan, cedar closet, standard closet, and en-suite bathroom
- Master Bathroom with stone floors, marble vanity, storage, large stall shower with glass door and seat
- Bedroom #2 with hardwood floors, window blinds, and large closet
- Bedroom #3 with hardwood floors, ceiling fan, window blinds, and large closet
- Hallway Bathroom with tile floors, marble vanity, tiled walls, shower over tub with glass door
- Linen Closet with built in drawers below
- Access to pull-down attic storage

## LOWER LEVEL

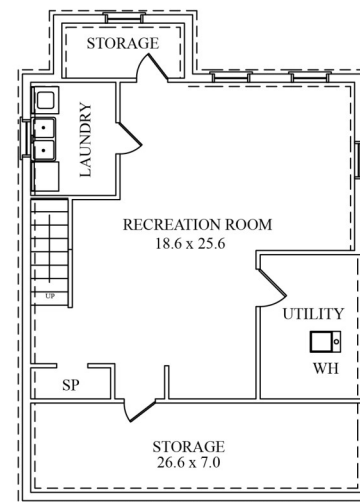
- Finished Basement with wall-to-wall carpet in recreation room, Laundry Room with Whirlpool washer/dryer and tile floor, large storage area, additional storage closet, utility room, three under stair storage closets and stairway access to the backyard



FIRST FLOOR



SECOND FLOOR



LOWER LEVEL

NOT TO SCALE - This floor plan is provided for illustration purposes only. Room positions and dimensions are approximate and should be independently measured for accuracy.

## ADDITIONAL FEATURES AND UPGRADES

- New Exterior Paint (2015)
- New Insulated, Double Glazed Windows (2011/2013)
- New Furnace (2010)
- New Sewer Line (2009/2010)
- Central A/C
- Sump Pump
- Two-Car detached garage with electric door openers
- Durable composite wood deck



Cell: (973) 975-0197  
Office: (973) 376-0033 x101  
Sue@sueadler.com  
www.sueadler.com/116Wellington

*Sue Adler*  
**KELLER WILLIAMS**  
PREMIER PROPERTIES