

22 Cliffside Drive

Livingston, New Jersey



Sue Adler
KELLER WILLIAMS
PREMIER PROPERTIES

sueadler 
THE #1 KELLER WILLIAMS TEAM IN NEW JERSEY team

Each Keller Williams office is independently owned and operated.



Situated atop a stately hill, 22 Cliffside Drive in Livingston features significant upgrades and undeniable charm. From a brand new kitchen to a spacious yard, this home has everything on your wish list covered. First, you'll notice 22 Cliffside Drive's massive, impressive front yard with brand-new professional landscaping, including fresh mulch, shrubs, and plants. Secondly, a long, wide driveway ensures your entire family and holiday guests will have a convenient place to park. You can enter through the home's gorgeous, recently painted front door or through the two-car attached garage, which leads to a finished basement.

Upon entering, you will find a convenient coat closet to store everyone's jackets, shoes, and sports equipment. Next, head up the immaculate, sunny hardwood floors into your new living room. Extra touches such as crown molding and a large bay window gives the Living Room a truly polished appearance. Continue into the Dining Room, a spacious area with hardwood floors and an elegant chair rail. A freshly renovated kitchen awaits you and your family off the Dining Room. With all new top-of-the-line, stainless steel appliances, including an LG refrigerator, Bosch dishwasher, and Samsung range, even the most inexperienced chef can prepare fabulous home-cooked meals. Serve Saturday morning pancakes on the breakfast bar and keep all food items and utensils organized in the Kitchen's plethora of cabinets and drawers.



Step into the hallway to find the gorgeous, newly renovated Hallway Bathroom, with stunning chalk-colored stone floors, an impressive vanity, and large shower over tub with subway tile and mosaic detail. Two nicely sized Bedrooms are also on the First Level, each with hardwood floors, large closets, and convenient ceiling fans. Your Master Bedroom features two nice-sized closets, one of which has custom shelving for all your shoes and accessories. The Master Bathroom also features recent sophisticated upgrades throughout.

Walk downstairs to your Finished Basement that includes a Recreation Room with new wall-to-wall carpeting and plenty of room for your favorite comfy sectional and large-screen TV. Use the room off the Rec Room area as your 4th Bedroom, Office, or home gym. With big windows, wall-to-wall carpeting, and a closet, you can use this multi-functional space in any way to meet your needs. You will also find a newly updated Powder Room and a Laundry Room. 22 Cliffside Drive features a spacious back and front yard, and large back deck for summertime entertaining. The wood deck has a gas grill hookup so your home can be the talk of the neighborhood for standout BBQs.

Livingston, NJ is an ideal family neighborhood with small town charm and the conveniences of being close to major Metropolitan areas. Livingston schools are top-rated – in fact, U.S. News rated Livingston High School as 21st in the state and has received the nation-wide Gold Medal Standard. Close to Routes 24, 78, 280, and the Garden State Parkway, Livingston offers easy commuting access. At 22 Cliffside Drive, you are just blocks to houses of worship and close to amenities such as the expansive South Mountain Reservation or luxury shopping at the Mall at Short Hills. Make Livingston the choice for you and your family – 22 Cliffside Drive is the perfect place to call home!

Inside and Out...

Upper Level

- Living Room with hardwood floors, crown molding, recessed lighting, large bay window
- Dining Room with hardwood floors, chair rail, and crown molding
- Kitchen with brand new stainless steel appliances, including an LG refrigerator with ice maker and water filter, Samsung gas oven, Bosch dishwasher, and LG built-in microwave, brand new granite countertops, new stainless steel sink, new tile backsplash, new blinds, new granite island, tile floors, and new granite breakfast bar
- Master Bedroom with hardwood floors, new ceiling fan, two closets with shelving, custom window treatments, and en suite bathroom
- Master Bathroom with tile floors, new vanity, new toilet, stand-up stall shower with brand new frosted glass door, new light fixtures
- Hallway Bathroom with brand new stone tile, vanity, brand new bathtub/shower combination, subway tile and mosaic backsplash
- Bedroom #2 with hardwood floors, brand new ceiling fan, closet, new custom blinds, and fresh paint
- Bedroom #3 with hardwood floors, ceiling fan, closet with storage shelves

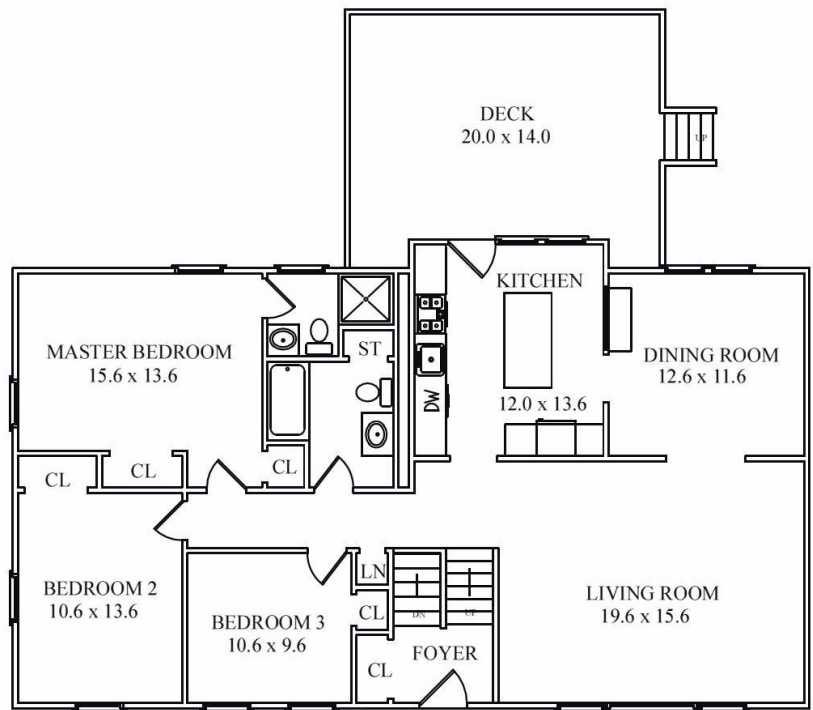
Lower Level

- Finished basement
- Recreation room with brand new wall-to-wall carpet, track lighting, and large windows
- Bedroom #4 with new wall-to-wall carpet, large windows, sliding-door closet, and new light fixture
- Powder Room with new tile floors, vanity with drawers and storage, new toilet, and new light fixtures
- Laundry Room with newer Samsung oversized washer and dryer
- Two-car attached garage

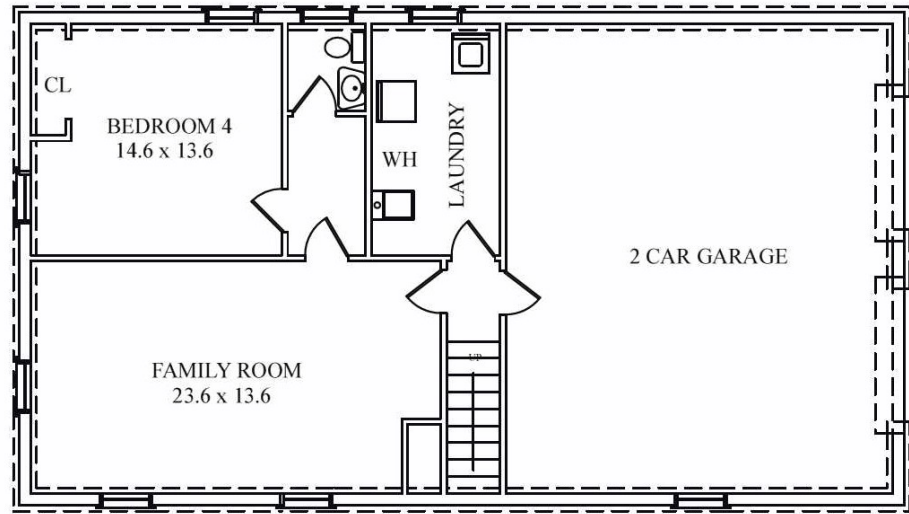
Updates and Additional Features

- Kitchen renovation (2015)
- Hallway Bathroom renovation (2015)
- Basement Bathroom renovation (2015)
- Master Bathroom upgrades (2015)
- Basement carpet (2015)
- Professional Landscaping (2015)
- Newly painted interior throughout (2015)
- French Drains/Sump Pump (2015)
- Samsung Washer and Dryer (2013)
- Hallway chandelier (2013)
- Home Security System
- Central A/C

Floor Plans



UPPER LEVEL



LOWER LEVEL

NOT TO SCALE - This floor plan is provided for illustration purposes only. Room positions and dimensions are approximate and should be independently measured for accuracy.

Sue Adler
KELLER WILLIAMS
 PREMIER PROPERTIES



Cell: (973) 464-9129
 Office: (973) 376-0033 x101
 Sue@sueadler.com
 www.sueadler.com/22Cliffside

sueadler
 THE #1 KELLER WILLIAMS TEAM IN NEW JERSEY team