

250 Dale Drive
Short Hills, New Jersey



Sue Adler
KELLER WILLIAMS
PREMIER PROPERTIES

sueadler 
THE #1 KELLER WILLIAMS TEAM IN NEW JERSEY team

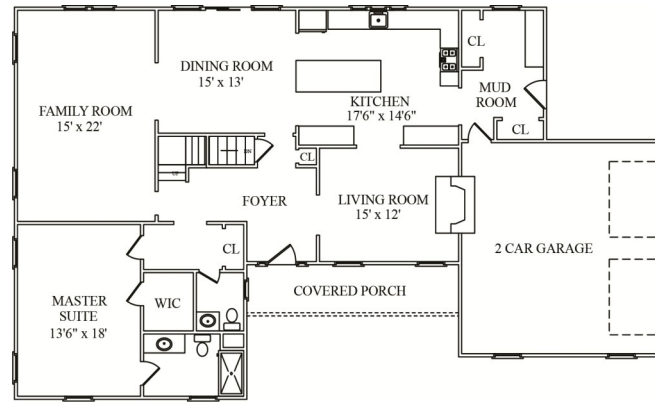
Each Keller Williams office is independently owned and operated.



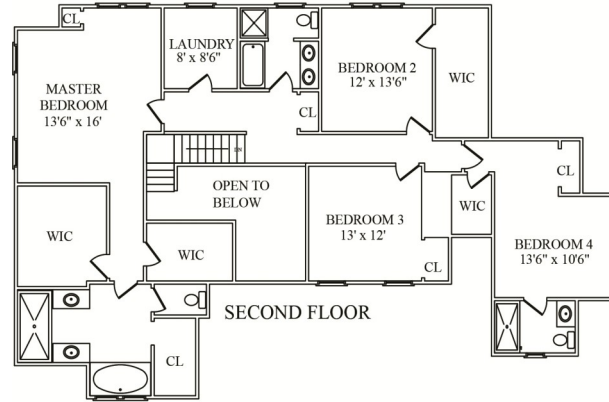
Inside and Out...

First Level

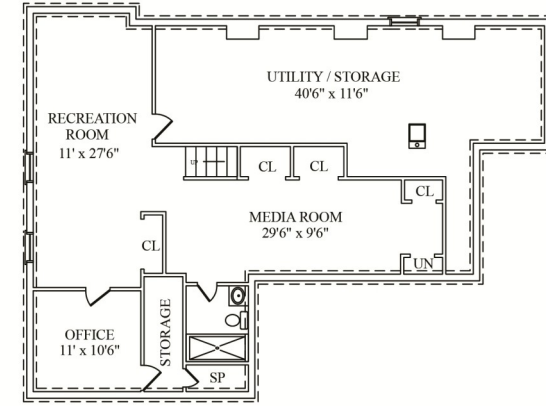
- Covered porch entrance leading to 2-story Foyer with porcelain tile floor, guest closet, panel wainscoting and staircase to second level
- Living Room with pillared entrance, hardwood floor, deep crown moldings, recessed lighting, double door closet, masonry wood burning fireplace with wood mantel and stone surround flanked by built-in shelving
- Dining Room with hardwood floor, deep crown moldings, recessed lighting and sliding doors with access to rear patio and yard
- Family Room with hardwood floor, beamed ceiling, crown moldings, picture windows and recessed lighting
- Kitchen with custom white cabinetry with under cabinet lighting, hardwood floor, quartz countertops and tumbled marble backsplash, quartz topped center island with breakfast bar and globe pendant lighting, top-of-the-line appliances including six burner Bertazzoni gas stove and griddle, Bertazzoni ovens, kitchen exhaust fan, Marvel wine cooler, dishwasher and refrigerator
- 2nd Master Bedroom or in-law suite with hardwood floor, walk-in closet with shelving, en suite full bath with walk-in shower featuring subway tiling, stone topped vanity and porcelain tile floor
- Mud Room with built-in closets, pantry shelving and access to garage



FIRST FLOOR



SECOND FLOOR



LOWER LEVEL

NOT TO SCALE - This floor plan is provided for illustration purposes only.
Room positions and dimensions are approximate and should be independently measured for accuracy.

Second Level

- 1st Master Bedroom suite with hardwood floor, recessed lighting and vaulted ceiling, 2 walk-in closets with shelving and master bath with two individual vanities with marble tops, oversized walk-in marble tile shower with frameless glass enclosure, platform soaking tub and marble tile floor
- Bedroom #2 with hardwood floor, crown molding, recessing lighting and walk-in closet with shelving
- Bedroom #3 with hardwood floor, crown molding, recessed lighting and closet with shelving
- Bedroom #4 with hardwood floor, walk-in closet with shelving and en suite bath with stall shower featuring subway tiling, stone topped vanity and porcelain tile Floor
- Hall Bathroom with tub, stall shower with glass door, porcelain floor and stone topped vanity
- Laundry Room with recessed lighting, porcelain tile floor, cabinets, countertop and Whirlpool Duet washer and dryer

Lower Level

- Finished with large Recreation Room, Media Room with abundant storage and Office with storage

Additional Features

- Serene setting backing to woods on cul-de-sac
- Boasting 1st and 2nd floor Master Suites
- 3-zone forced hot air and central air conditioning and additional ductless split in lower level
- JELD-WEN thermal windows and doors
- Sump pump
- Security System
- Stained oak hardwood flooring
- LED recessed lighting

Exterior Features

- Cedar shake exterior
- Covered front porch
- Paver patio
- 2-car built-in garage
- Paved driveway
- Professionally landscaped exterior with perimeter lighting
- Lawn irrigation system



Cell: (973) 464-9129
Office: (973) 376-0033 x101
Sue@sueadler.com
www.sueadler.com/250Dale



