

57 Elmwood Place

Short Hills, New Jersey



Sue Adler
KELLER WILLIAMS
PREMIER PROPERTIES

sueadler 
THE #1 KELLER WILLIAMS TEAM IN NEW JERSEY team

Each Keller Williams office is independently owned and operated.



Welcome to 57 Elmwood Place, a charming three bedroom, 2.5 bath colonial situated on a quiet, tree-lined street in the Glenwood section of Short Hills. Recent modern updates to this lovely home have only increased its desirability.

Step inside to view the fully refinished, richly hued hardwood floors that flow throughout. The front entry is open to the generously sized Living Room highlighted by an impressive center fireplace that's the focal point of the room. It's the perfect place to gather with friends and family before sitting down to an elegant meal in the adjacent Dining Room. Here you'll enjoy easy access to the recently updated eat-in kitchen where crisp white cabinetry is accented by new stainless steel appliances, attractive granite counter tops, subway tile backsplash and newly installed tile floor. Relish the view of the lush greenery in the backyard as you gaze through a large window while preparing your morning coffee or a full gourmet meal. Afterwards, relax in the nearby Sun Room that features a broad picture window with more outdoor views. Completing this level is a conveniently located Powder Room.



The spacious Master bedroom on the second level provides an inviting private retreat. Large windows usher in plenty of light and a luxuriously remodeled en suite marble bath assures your complete satisfaction. The oversized glass enclosed shower is sure to please! Two additional large bedrooms on the second level and an updated full hall bath provide comfort and privacy for your family and guests. And there's more...a finished lower level is complete with a large tiled Recreation Room, a fully equipped Laundry Room and plenty of usable storage space.

Within easy walking distance to local Blue Ribbon schools, downtown shopping and NYC trains, 57 Elmwood Place is the perfect place to call home!

Inside and Out...

First Level

- Entry Foyer with hardwood floors, wood door with glass accent panes, crown molding, center staircase, light fixture and large coat closet; open to Living Room
- Living Room with hardwood floors, crown molding, 4 windows, fireplace with wood mantel, brick surround and stone hearth; archway to Dining Room
- Dining Room with hardwood floors, large window, crown molding, new chandelier; archway to Sun Room, doorway to Kitchen
- Den with large picture window, hardwood floors, painted paneled walls, crown molding
- Kitchen with white cabinetry, granite countertops, subway tile backsplash, wood-look tile floor, crown molding, recessed lighting, stainless steel appliances including GE refrigerator/freezer, GE dishwasher, 4-burner GE range with oven below, stainless steel sink with window above; side door to exterior, door to Powder Room, access to lower level
- Powder Room with tile floor, wall mount sink, built-in medicine cabinet with mirror, crown molding

Second Level

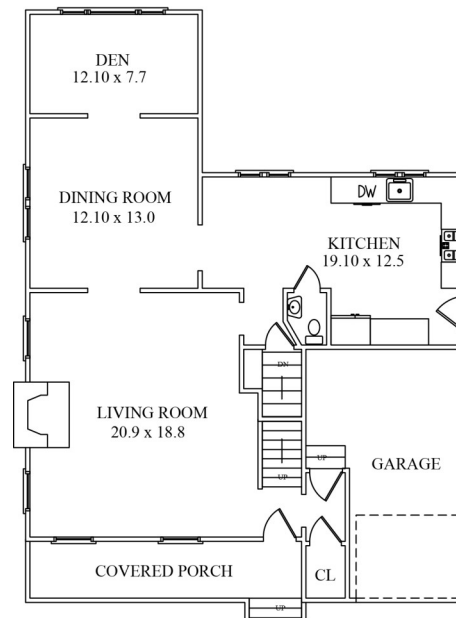
- Gallery landing with hardwood floors and pull-down stairs to attic
- Master Bedroom with hardwood floors, large walk-in closet, additional cedar closet, 3 windows, light fixture, en suite bath featuring glass enclosed shower with marble tiled walls with mosaic tile border, built-in corner shelf, hand held and rain shower heads, vanity with granite counter top, cabinets below and framed mirror above, recessed light, window, built-in cabinet with shelf, marble tile floor
- Bedroom #2 with hardwood floors, light fixture, additional cedar closet and large windows
- Bedroom #3 with hardwood floors, large windows, closet and light fixture
- Full Hall Bath with ceramic tile floor, vanity with granite counter, framed mirror above and cabinet below, shower over tub, linen closet, recessed lighting

Lower Level

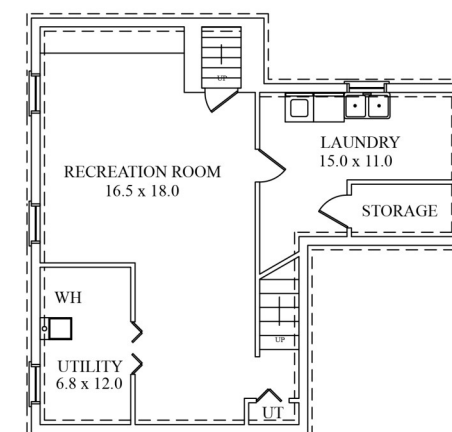
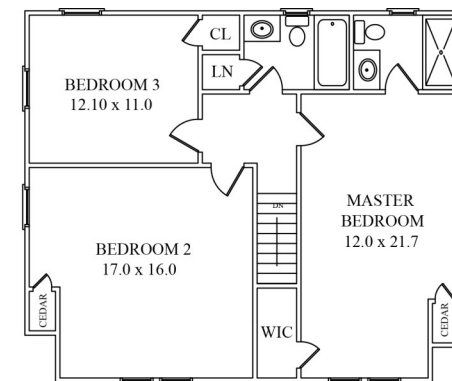
- Recreation Room with vinyl floor, fluorescent lighting, full wall of built-in bookshelves, 2 grade level windows; access to Laundry Room and utilities
- Laundry Room with Kenmore Elite dryer, GE front load washing machine, large utility sink, window and access to additional storage room/broom closet

Additional Features and Upgrades

- 11-car garage with electric door, heater, built-in shelving, supplemental refrigerator
- Fenced rear yard
- 1-zone steam heat; 1-zone central air conditioning (2016)
- All hardwood floors throughout home refinished (2016)
- Interior painting of all rooms (2016)
- All windows replaced (2011)
- New light fixtures installed in Entry Foyer and all bedrooms (2016)
- Master Bath addition (2016)
- Hall Bath updated with new vanity, granite counter tops and shower head (2016)
- Kitchen updated with new tile floor, granite counters, subway tile backsplash, GE appliances and cabinet painting (2016)
- New GE front load washing machine installed (2014)
- New front storm door installed (2016)



NOT TO SCALE - This floor plan is provided for illustration purposes only.
Room positions and dimensions are approximate and should be independently measured for accuracy.



Sue Adler
KELLER WILLIAMS
PREMIER PROPERTIES



Cell: (973) 975-0197
Office: (973) 376-0033 x101
Sue@sueadler.com
www.sueadler.com/57Elmwood