

25 Pine Terrace West

Short Hills, New Jersey



Sue Adler
KELLER WILLIAMS
PREMIER PROPERTIES

sueadler 
THE #1 KELLER WILLIAMS TEAM IN NEW JERSEY team

Each Keller Williams office is independently owned and operated.



Welcome to 25 Pine Terrace West, a charming 4 bedroom, 2.5 bath colonial situated on a picturesque tree lined street in the heart of the Glenwood section of Short Hills. You'll be instantly drawn in to this inviting home as you pass through the front Entry Foyer to an open floor plan that's perfectly suited for entertaining and daily life. Step to the right into a spacious Living Room where light streams through a large bay window onto the gleaming hardwood floors. A grand fireplace with intricately detailed wooden mantel takes center stage as family and friends gather here to enjoy quiet conversation or festive holiday celebrations alike. Proceed through a broad archway into an elegant formal Dining Room that's ideal for gourmet meals created in the neighboring Kitchen that's been fully updated to meet any chefs needs. Crisp white cabinetry and brand new stainless steel appliances are sure to please even the most discerning of cooks and a separate dining area with sliding doors to the deck outside is just perfect for informal dining. At the end of your meal, retire to one of 2 casual spaces on the first level. Two steps down from the Kitchen is a cozy Family Room boasting soaring ceilings and custom built-ins for storage and display of your favorite collectibles. Snuggle up here for some movie watching or if you prefer, head to the light filled Sun Room with two skylights and full windowed walls overlooking the greenery in the backyard to relax with your favorite book. The neighboring Powder Room rounds out the first level living space.



The second level is home to 4 generous sized bedrooms and 2 full bathrooms accessed via a spacious gallery landing. The light filled Master Bedroom Suite awaits and is sure to provide a relaxing retreat. Here you'll find richly hued hardwood floors, plenty of closet space and a conveniently located en suite bath which you're sure to appreciate as you unwind at the end of the day. Three additional light filled bedrooms, each with hardwood floors and plenty of closet space, and an easily accessed full hall bath complete the second level.

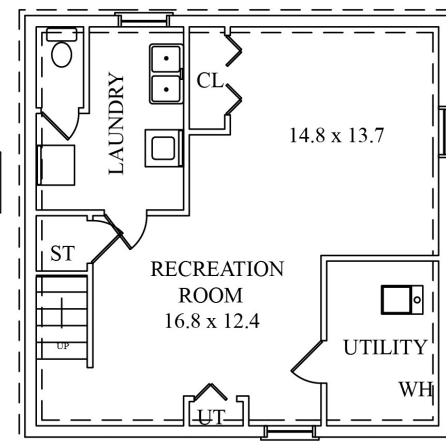
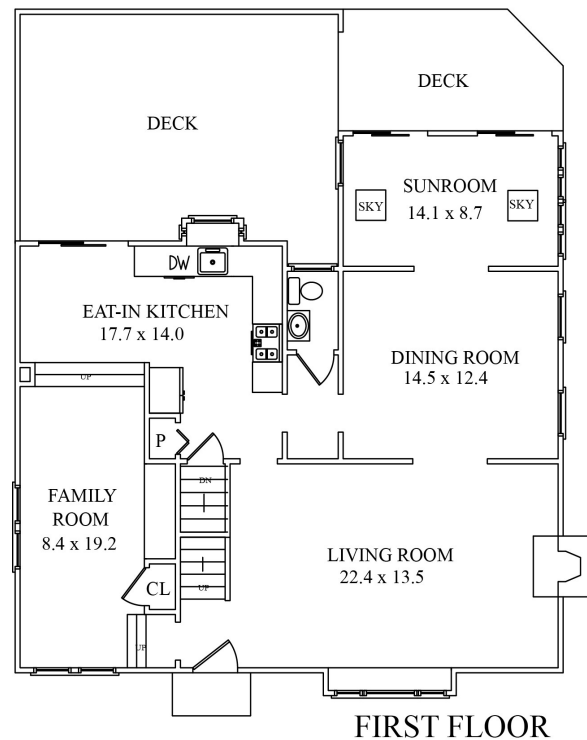
And there's more... A finished lower level boasts a spacious carpeted Recreation Room with plenty of storage space while a neighboring, fully equipped Laundry Room meets your daily needs. Outside is a private fenced in backyard that sits beneath a canopy of mature trees. A lush, flat lawn provides plenty of room for playtime and all of your favorite hobbies while a large wooden deck affords the perfect place for summer entertaining.

With it's sought after location blocks to downtown Millburn and NYC transportation, access to Blue Ribbon schools and world class shopping and restaurants, 25 Pine Terrace West is the perfect place to call home.

Inside and Out...

First Level

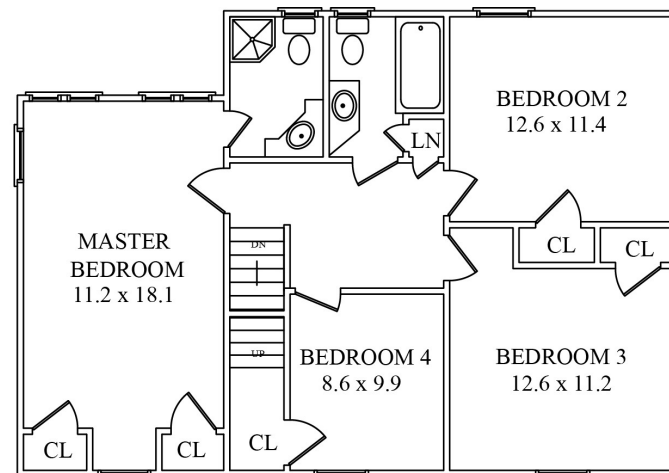
- Entry Foyer with stone tile floor open to Living Room, staircase to Family Room and second level
- Living Room with hardwood floors, dentil molding, bay window, fireplace with detailed wood mantel, brick surround and stone hearth; broad archway to Dining Room
- Dining Room with hardwood floors, 2 windows with wood shutters, brass chandelier; doorway to Sun Room and Kitchen hallway with Powder Room access
- Sunroom with carpet, 2 sky lights, full windowed wall with sliding doors to backyard, 2nd windowed wall, ceiling fan with light, supplemental baseboard heat
- Powder Room with hardwood floors, vanity with stone top, light fixture and window
- Kitchen with hardwood floors, custom cabinetry, stainless steel Amana appliances including electric cooktop with oven below, dishwasher, refrigerator/freezer and microwave, stainless steel double sink with disposal, ceramic tile counter and backsplash, pantry cabinets, recessed lighting, eat-in dining area with skylight and sliding doors to wood deck; access to Family Room and lower level
- Family Room with hardwood floors, 2 picture windows, built-in cabinet with book and display shelves, supplemental baseboard heating, high ceiling with recessed lighting, coat closet; staircase to entry foyer



NOT TO SCALE - This floor plan is provided for illustration purposes only. Room positions and dimensions are approximate and should be independently measured for accuracy.

Second Level

- Gallery Landing with hardwood floors, crown molding and linen closet
- Master Bedroom Suite with hardwood floors, 2 closets with mirrored doors, light fixture, windows on 3 sides with plantation shutters, en suite bath with ceramic tile floor, shower with glass door, hand held shower head, tiled walls and built-in corner shelves, corner vanity with mirror above and cabinet below, recessed lights and window
- Bedroom #4 with hardwood floors, window with wood shutters, closet, wall shelves, walk-in closet with steps up to large attic storage room, light fixture
- Bedroom #3 with hardwood floors, large closet, 2 windows with wood shutters, light fixture and wall shelves
- Bedroom #2 with hardwood floors, large closet, iron/crystal chandelier and 2 windows
- Full Hall Bath with ceramic tile floor, vanity with Corian top, mirror above and cabinets below, shower over tub with tiled walls and hand held shower head, recessed lights, window and access to hallway linen closet



Lower Level

- Recreation Room with carpet, recessed lights, 2 pantry storage closets with wire shelving, additional storage closet with bi-fold doors; access to Laundry Room and utilities
- Laundry Room with ceramic tile floor, Kenmore washer and dryer, utility sink, window, toilet and fluorescent lighting

Additional Features and Upgrades

- 2-car detached garage with lofted storage area, shelving and 2 windows
- Brick paver walkway leads to large fenced-in backyard and raised wood deck
- Forced air heat and central air conditioning (new 2013)
- Interior freshly painted (2016)
- Exterior painted and new gutters installed (2015)
- Chimney renovation (2016)
- Driveway resealed (4/2015)
- All new Amana stainless steel Kitchen appliances installed (2016)

Sue Adler
KELLER WILLIAMS
 PREMIER PROPERTIES



Cell: (973) 975-0197
 Office: (973) 376-0033 x101
 Sue@sueadler.com
 www.sueadler.com/25PineTerraceWest