

Each Keller Williams office is individually owned and operated.



6 CHESTNUT ROAD | CHATHAM





Welcome to 6 Chestnut Road! Gracefully located on a quiet cul de sac in the heart of Chatham sits this state-of-the-art NEW 6 Bedroom, 5 and ½ Bath custom home with a modern farmhouse vibe. This home boasts the ultimate in entertaining spaces, master craftsmanship, unbelievable amenities and proximity to Midtown Direct train and fabulous downtown Chatham/Madison restaurants and shopping.

Curb appeal abounds with the home's elegant roofline, on trend windows with black mullions and farmhouse style double front door. Enter the spacious Entry Foyer and prepare to be overwhelmed by the sheer elegance of this home. With 4" wide plank red oak hardwood floors throughout (herringbone patterned in the Foyer), high ceilings, custom moldings and wonderful flow, the First Level is the perfect example of high design and function. Move easily into the sun-drenched Living Room with magnificent raised floor to ceiling custom trim and a bay of windows. Dinner parties are divine in the enormous Dining Room with custom wainscoting throughout and a designer light fixture. The Gourmet Chef's Kitchen amazes with its custom island with seating for 4 and a quartz waterfall edge, exquisite gray cabinetry and top of the line Wolf/Sub Zero stainless appliances. The Kitchen opens directly to a massive Family Room featuring a gas fireplace, enormous windows and sliding doors leading to the patio perfect for al fresco dinner parties or cocktails with friends (a second Patio is located down a few steps). A conveniently located Powder Room with on trend gold fixtures and hardware and a spacious Mud Room with custom cubbies and a Walk In Closet, round out the first level.





Ready to retire for the evening? The open and airy curved staircase, flanked by custom iron railings, takes you to the second floor landing with access to the home's fabulous four bedrooms. The luxurious Master Bedroom Suite is sure to impress with a soaring vaulted ceiling, a dramatic architectural window and two GORGEOUS Walk In Closets with furniture style wood detail with custom shelving, hanging storage and drawers. The spa-like Master Bathroom is absolute perfection with two luxurious vanities with quartz countertops, an elegant soaking tub, a deluxe frameless glass door shower for 2 with rain showerheads and on trend tile throughout. Three other huge bedrooms are steeped in sunlight and include Walk In Closets. One bedroom is ensuite and the others share a Jack and Jill Bath. All baths include chic vanities, quartz countertops and gorgeous tile selections. A second floor Laundry Room makes doing laundry a pleasure. Walk up a few steps to the immense Third Level where a large Recreation/Teen Lounge/Ensuite Bedroom 6 make this the perfect spot for hanging out.

And there's more...The fully finished walk out Lower Level is sure to blow your mind. A giant Recreation Room with a Custom Bar and Exercise Room will provide hours of entertainment for family and friends. In addition, a Guestroom Suite is ideal for an au pair or visiting guests.

Don't miss this rare opportunity to make this newly constructed custom home your own! Top Notch Chatham schools, Midtown Direct Train and downtown Chatham/Madison shopping and restaurants make this opportunity exceptional!





# I N S I D E & O U T

## FIRST LEVEL

- 2-Story Entry Foyer featuring double farmhouse style doors at entry, herringbone patterned hardwood floors, board and batten/raised paneling on walls, designer chandelier, recessed lighting, custom curved staircase with custom iron railings, Second Floor Gallery overlooking Entry Foyer, rear hallway with Double Door Coat Closet, painted crisp white
- Dining Room featuring hardwood floors, custom wainscoting, designer chandelier, recessed lighting, bay of windows, painted soothing gray
- Living Room featuring hardwood floors, designer light fixture, recessed lighting, raised floor to ceiling custom trim, painted soothing gray, bay of windows
- Gourmet Chef's Kitchen featuring hardwood floors, custom gray cabinetry including glass door cabinetry by St. Martin, quartz countertops, mosaic designer tile backsplash up to ceiling, island with seating for 4 and quartz waterfall edge, recessed lighting, 2 pendant lights over island, under cabinet LED lighting, Kohler farm sink, stainless bar sink in island, 48" Sub Zero professional series stainless refrigerator/freezer, 48" Wolf stainless professional series 8 burner oven/range, Asko stainless dishwasher, XO Beverage Refrigerator, Sharp stainless built in microwave, Best hood insert
- Breakfast Area featuring hardwood floors, recessed lighting, sliding French doors out to Patio
- Family Room featuring hardwood floors, wainscoting, gas fireplace with custom millwork mantle and stone surround, coffered ceiling, recessed lighting, oversized picture window and 2 other windows, painted neutral hue
- Mud Room featuring designer hexagonal floor tile, custom cubbies with storage and L-shaped bench, recessed lighting, baseboard molding, door to Garage, Walk In Closet
- Powder Room featuring designer chevron marble floor tile, custom modern vanity with quartz countertop, wainscoting, designer mirror, designer sconces, chic gray wallpaper, fan, recessed light, oversized window, on trend gold fixtures and hardware
- 2 Car Garage with Lift Master electric doors, outside keypad

## SECOND LEVEL

- Second Floor Landing featuring Gallery overlooking Entry Foyer, hardwood floors, recessed lighting, wainscoting, crown molding, Linen Closet, painted neutral hue
- Master Bedroom Suite featuring double doors at entry, hardwood floors, vaulted ceiling, wainscoting, architectural arched window overlooking backyard, board and batten accent wall, chandelier, recessed

lighting, painted neutral hue, 2 Walk In Closets with pocket doors at entry, furniture style shelving, drawers and hanging storage, window seat

- Master Bathroom featuring slate look oversized floor tile, 2 oversized vanities (1 with makeup area), quartz countertops, custom mirrors, sconces, recessed lighting, fan, chandelier, frameless glass shower for 2 with dual rain shower and regular showerheads, designer mosaic tile throughout, bench, free standing soaking tub, separate room for toilet
- Laundry Room featuring wood look floor tile in hexagonal pattern, utility sink, oversized window
- Bedroom 2 featuring hardwood floors, oversized windows, recessed lighting, baseboard molding, Walk In Closet with custom shelving and hanging storage, L-shaped bench
- Jack and Jill Bath featuring hexagonal designer floor tile, custom double vanity with quartz countertop, on trend matte black fixtures and hardware, sconces, recessed lighting, pocket door to separate room for shower and toilet, frameless glass shower with oversized subway tile, mosaic tile in niche and hexagonal floor tile
- Bedroom 3 featuring hardwood floors, oversized windows, recessed lighting, baseboard molding, Walk In Closet with custom shelving and hanging storage,
- Ensuite Bedroom 4 featuring hardwood floors, oversized windows, recessed lighting, baseboard molding, Walk In Closet with custom shelving and hanging storage, Bathroom featuring pocket door at entry, designer floor tile, custom vanity with quartz countertop, tub/shower combination with designer tile surround, recessed lighting, globe sconces, octagonal mirror

## THIRD LEVEL

- 7', 6" ceilings
- Staircase with custom iron railings to Third Level
- Recreation Room/Teen Lounge/Bedroom 6 featuring hardwood floors, deep dormers (easily used as closets), L-shaped bench, recessed lighting
- Full Bath featuring fabric look floor tile, custom vanity with quartz countertop, tub/shower combination with designer tile surround, 2 sconces, recessed lighting, fan

## LOWER LEVEL

- Staircase with custom iron railings to Lower Level
- 9' ceilings throughout
- Second Floor Landing featuring wide plank wood look laminate flooring, wainscoting, recessed lighting, baseboard molding, Closet
- Exercise Room featuring double glass doors at entry, rubber flooring, wall of mirrors, recessed lighting, baseboard molding

- Guest Room/Bedroom 5 featuring wide plank wood look laminate flooring, oversized egress window, double door Closet, recessed lighting, baseboard molding
- Recreation Room featuring wide plank wood look laminate flooring, wainscoting, recessed lighting, Custom Bar Area with custom gray cabinetry, quartz countertops, bar sink, area for beverage refrigerator, seating for 5, recessed area for TV, French door to backyard, 2 utility/storage Closets
- Full Bath featuring wide plank wood look tile, custom wood vanity with quartz countertop, 2 sconces, frameless glass shower with subway tile and accent mosaic tile, hexagonal floor tile, recessed lighting, fan
- Sump pumps and French drains

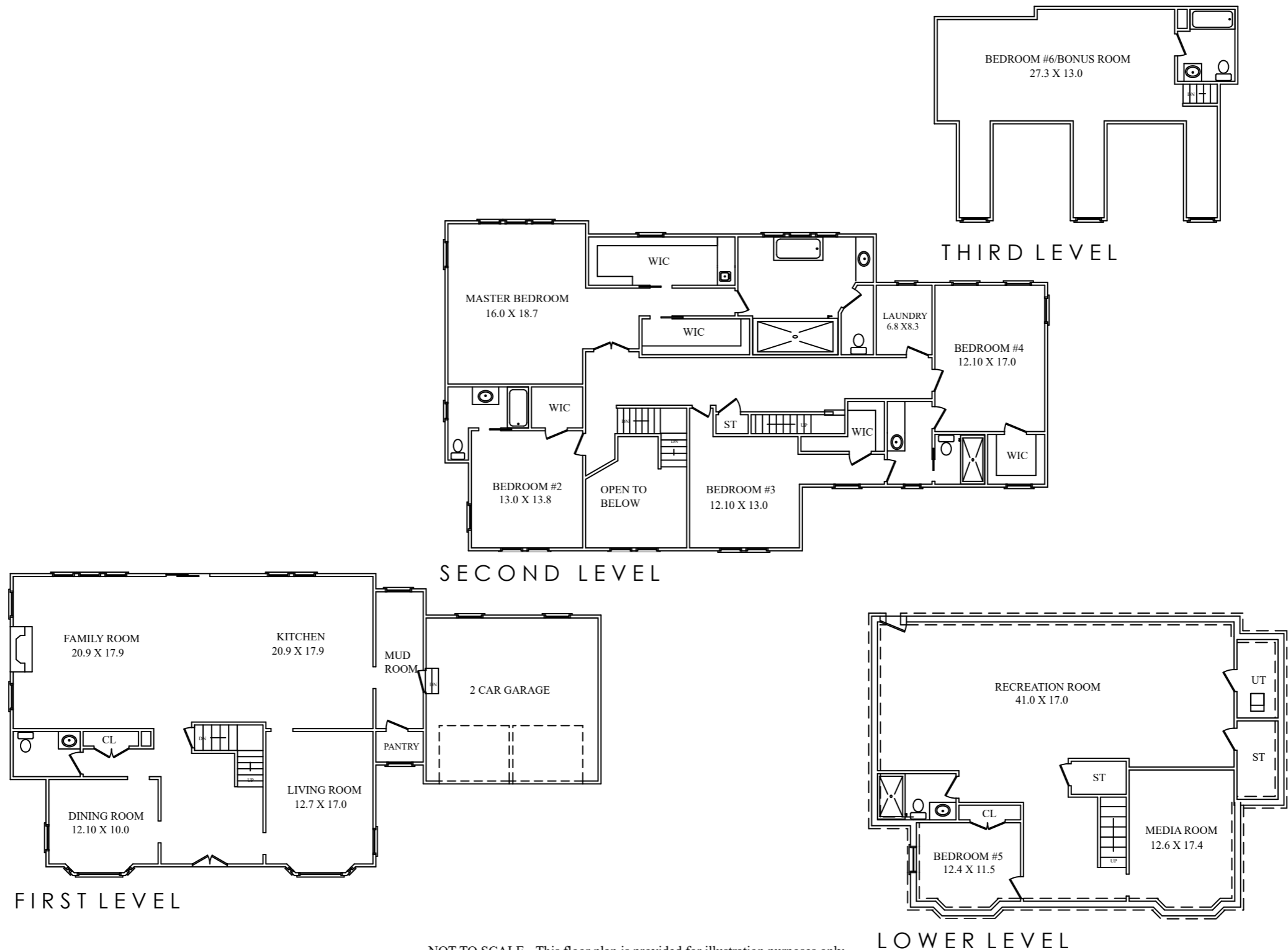
## FRONT/BACKYARD

- Covered front entry area with stone landing, stone front walkway
- Stone and brick paver raised Patio, custom railings
- 2<sup>nd</sup> Circular Patio
- Maintenance free fence encloses flat yard
- Professional landscaping including foundation plantings and blooming perennials
- Multi-zone irrigation system
- Stone Driveway with Belgium block curbing installed on angle
- Gas hook up for barbeque grill

## ADDITIONAL FEATURES

- Total Finished Space 5,920 sq ft + 421 sq ft garages
- 4" wide plank red oak hardwood throughout 1<sup>st</sup>, 2<sup>nd</sup> and 3<sup>rd</sup> Floors and stair landings
- 9' ceilings throughout
- Oversized windows with on trend black mullions throughout
- Heating – (3 furnaces) – High Efficiency
- Cooling -- Central A/C (3 condensers) -- High Efficiency
- 75 Gallon Direct Vent Energy Efficient water heater
- Central vacuum system, outlets throughout including basement & garage
- Stairs are red oak treads and pine risers with oak railings
- Cable TV, Internet, & Telephone jacks in each room with centralized video
- Kohler toilets and plumbing throughout
- Smoke and CO2 detectors as per code
- Painted soothing Benjamin Moore hues throughout
- 10 year New Home Warranty
- Exterior Hardie Plank with Azek Trim all around and natural stone
- Pella windows ProLine 450 Series with grills and screens
- GAF Timberline Dimensional roof with lifetime warranty, Accent roofs finished with Matte Black standing seam aluminum

# THE FLOOR PLAN



NOT TO SCALE - This floor plan is provided for illustration purposes only.  
Room positions and dimensions are approximate and should be independently measured for accuracy



CELL: 973.936.9129  
OFFICE: 973.376.0033 x101  
EMAIL: [info@sueadler.com](mailto:info@sueadler.com)  
[sueadler.com/6Chestnut](http://sueadler.com/6Chestnut)



*All information deemed reliable but not guaranteed*

