



200 HOBART AVENUE | SUMMIT









Sitting majestically on 2.46 acres and one of the most prestigious lots Summit has to offer, 200 Hobart Avenue is a rare opportunity for the discriminating buyer seeking acreage, architectural magnificence, immense privacy and a storybook setting close to New York City, Midtown Direct train, Blue Ribbon schools, excellent restaurants, shopping and all Summit has to offer.

Enter the property flanked by decorative brick piers and drive up the gracefully curved driveway and you know you have arrived somewhere extremely special. Stone walls and lush gardens abound as you arrive at this magnificent 6 Bedroom, 6½ Bathroom newly renovated Tudor Revival complete with exquisite patterned brickwork, stately gables and gorgeous windows featuring stained glass and heraldic emblems. A spectacular entry door set within a classic Tudor arch grace the striking front entrance. Once inside the spacious and elegant Entry Foyer, prepare to be overwhelmed by the stunning craftsmanship and timeless architectural details including moldings and trim with decorative bas-relief motifs, board and batten paneling and wood carved staircase. A Rear Foyer entrance provides seamless access to the gorgeous rear courtyard.



The Living Room will take your breath away with its rustic wood beamed ceiling, plaster walls with charming bas-relief motif and magnificent fireplace with sumptuous carved stone mantle. Casement windows with leaded glass, at both the front and the back of the room, provide outstanding views of the park-like property. Flow easily into the Sun Room with exquisite brickwork, casement windows at 3 exposures and access to its own intimate Bluestone Terrace. Back inside, curl up by the fire, cozy up with a book or simply stare out the outstanding wall of windows in the elegant Library featuring floor to ceiling board and batten paneling, fireplace with carved stone surround and hidden theatre screen and sound system. Ready to entertain? You simply cannot find a better venue than the Formal Dining Room. The ethereal casement bay window with intermittent stained glass panels is a breathtaking focal point. Take in this architectural room with its decorative carved entryway, strapwork ceiling with geometric pattern, decorative frieze crown molding and striking plaster walls. The Dining Room flows easily to the lovely Butler's Pantry with its original cabinetry providing plenty of storage so that nothing will be out of place. The totally brand new renovated Chef's Gourmet Kitchen, gorgeously done to protect the integrity of the home's history, will satisfy any cook with its oversized white Macuba Quartzite 2 ½" walnut island, Macuba Quartzite countertops, stainless steel high end appliances and ample wood cabinetry. Flow easily into the totally open concept Family Room readily equipped with custom built-ins, sound system and easy access to the side entrance. Rounding out the 1st Floor is a tasteful Powder Room featuring marble tile and a graceful washstand with marble top.







When it's time to retire for the evening, the stately staircase leads you to a second floor landing with an elegant window seat flanked by oak paneling and a glorious casement window with leaded glass. Luxury and privacy abound in the sophisticated and brand newly renovated Master Bedroom Suite featuring Sitting Room with custom built-ins and fireplace, enormous Master Bedroom Area with a second fireplace and jaw dropping custom walk in closet. The brand new luxe Master Bathroom exudes relaxation with walnut barrel ceiling with LED cove crown lighting, custom walnut vanity with arched beveled mirror and integrated LED lighting. The crown jewel of the new spa-like bathroom is the walk in oversized shower with Bianco Cielo stone walls, floor and ceiling and a turquoise feature wall. Spacious Bedroom #2 includes gorgeous architectural windows, a walk-in closet and its own Ensuite Full Bath. Bedroom #3 boasts its own bay of casement windows, a fireplace and an Ensuite Bath. Two additional bedrooms offer ample space, gorgeous views of the property and share the beautifully renovated Hall Full Bathroom. Laundry is a snap with second floor laundry and an adjacent charming Linen Room. The massive Third Level includes an additional Bedroom, complete with its own Dressing Room and renovated en-suite Bath. A Bonus Room, storage spaces and an enormous Recreation/Playroom, complete with storage and built-ins, rounds out this floor.

Equally fantastic as the architectural magnificence of the house is its splendid park-like property and charming Carriage House. Enjoy complete privacy and tranquility with stone walls, meandering paths, specimen trees, outstanding outdoor bluestone terraces and its own secret garden. ndEnjoy a drink and contemplate nature as you relax under a pergola or stroll through the property. The Carriage House is extraordinary with gorgeous brickwork and lovely peaks. Guests will not want to leave the 2nd floor Recreation/Media Room with its gorgeous vaulted ceiling, wet bar and built-in sound system. The heated garage holds 4 cars and is adorned by its original carriage doors.

200 Hobart Avenue's architectural integrity, magnificent renovations and incredible grounds make it a dream estate in every way. Just minutes from Blue Ribbon schools, NYC transportation, luxury shopping and downtown Summit, this home must be seen to be believed.





I N S I D E & O U T

FIRST LEVEL

- Vestibule Entrance featuring arched wood door, original tile floor, arched ceiling with decorative frieze molding and board and batten style oak paneling
- Entry Foyer/Reception Hall featuring wide plank hardwood floors, board and batten style paneling, arched Rear Entrance Door to rear courtyard, decorative plaster frieze moldings, decorative plaster upper walls and entryways, decorative ceiling medallion, window seat with casement windows with leaded glass, traditional carved wooden staircase
- Front to Back Living Room featuring wide plank hardwood floors, rustic wood beamed ceiling, plaster walls with "bees" bas-relief motif, fireplace with detailed decorative stone mantle, front and back picture casement windows with leaded glass, antique sconces throughout
- Sun Room featuring restored original patterned stone floor, exposed brick, casement windows with divided lights at 3 exposures, crown molding, Double French Doors, decorative door out to private side bluestone patio, antique light fixture, in ceiling speakers
- Formal Dining Room with decorative carved entryway molding, wide planked floor, strapwork ceiling with geometric pattern, decorative frieze crown molding, plaster walls with bas relief motif, leaded casement bay window with intermittent stained glass panels and window crests, antique sconces throughout
- Library/Den featuring restored floor to ceiling board and batten style oak paneling, fireplace with carved stone surround, wide planked wood floors, bay of leaded casement windows with intermittent stained glass panels and window crests, arched leaded windows above, custom built-in cabinetry with storage, custom bookcases, sconces throughout
- Butler's Pantry featuring restored original hand painted cabinetry with glass front upper cabinets and antique mirror inlay and solid pewter hardware, casement windows with leaded glass, sink, Soapstone 1 ¼" stone countertops, accent feature backsplash 1 ¼" white Macuba backsplash, decorative lighting fixture, historic Duparquet warming oven, dual zone beverage center wine refrigerator, beadboard wainscoting, stained oak wide plank wood floor
- Renovated Chef's Kitchen featuring new kitchen cabinets with combination of painted and walnut stained with accent glass cabinets with walnut wood backing and glass shelves and solid satin brass hardware, Shaw farm sink with double bowl and grid, 1 ¼" white Macuba quartzite slab countertops, full backsplash white Macuba

slab as feature wall with laminated sill top shelf at historical window bay and custom wood window panel and casing surround, restored and refurbished Historical leaded window 5 in bay and 2 flanking the custom exhaust hood and 3 windows at desk area, oversized walnut island with 2 ½" built up laminated edge countertop in White Macuba and custom pendant lighting over island, Sub Zero refrigerator and freezer with ice maker, 2 Bosch dishwashers, Wolf commercial grade stainless steel gas cooktop and electric double ovens with custom architectural black enamel and brushed brass exhaust hood, 24" wine refrigerator with wood frame and glass front, LED recessed lighting, stained walnut hutch with decorative wire mesh inset and cabinetry, in ceiling speakers, stained oak wide plank wood floor

- Family Room featuring stained oak wide plank hardwood floors, LED recessed lighting, decorative sconces, casement windows, in ceiling speakers, back staircase to 2nd floor
- Side Entry with oak door and custom leaded glass panel with custom Coat Closet
- Powder Room featuring decorative carved entryway molding, console vanity, marble tile floor, decorative crown molding, iron chandelier, iron sconces

SECOND LEVEL

- Carved wooden staircase leading to landing with window seat, board and batten style paneling and casement windows with leaded glass
- 2nd floor landing featuring wide plank hardwood floors, plaster walls, chandelier with decorative plaster ceiling medallion, decorative frieze molding, 10" baseboard molding
- Renovated Master Bedroom Suite featuring decorative carved entryway molding, refinished hardwood floors, decorative light fixtures, crown molding and 10" baseboard molding, fireplace with stone surround and detailed millwork, custom walk in closet with painted and stained walnut cabinetry, double entry doors, satin brass accents, stained walnut peninsula top drawer with glass accented cabinet details with leather lined top drawer, woven Wilton needlepoint carpet
- Master Sitting Room featuring crown molding and 10" baseboard molding, fireplace with stone surround and detailed millwork, double French doors leading into Master Bathroom, custom built-in cabinetry with storage, flushmount light fixture with drum shade
- Renovated Master Bathroom featuring basket weave stone tile floor throughout, barrel ceiling with LED cove walnut crown

lighting, custom walnut vanity with arched beveled mirror and walnut surround panel frame out on ceiling area above the dual undermount sinks with LED integrated lighting, countertop laminated stone slab top, Samuel heath faucets and accessories, integrated concealed side medicine cabinet built-in oversized walk in shower with multiple shower heads (rain/stationary/handheld), decorative floor grain, surround in Misty white slab stone and Bianco Cielo stone walls on ceiling and floor, shower niche with shelving, built in bench, highlighted feature wall with turquoise oversized stone with stone chair rail frame out, separate commode room with custom metal and glass acid etched glass pocket privacy door, concealed panel front linen closet and lower hamper storage area, painted wood wainscot wall panels

- Bedroom #2 featuring hardwood floors, crown molding and 10" baseboard molding, walk-in closet, casement windows with leaded glass, en-suite Full Bathroom featuring tiled floor and walls, shower over tub with tile surround, pedestal sink
- Bedroom #3 featuring bay of casement windows with leaded glass, fireplace with wood mantle and stone surround, hardwood floors, crown molding and 10" baseboard molding, closet, en-suite Full Bathroom featuring tiled floor and walls, bathtub with tile surround, stall shower with tile, pedestal sink
- 2nd Floor Laundry Closet with Kenmore Elite Washer and Whirlpool Duet Dryer
- 2nd Floor Ironing and Linen Storage Room with original hand-painted built in cabinetry, hardwood floors
- Bedroom #4 featuring hardwood floors, dormer windows, 10" baseboard molding, built in cabinetry, crown molding and closet
- Bedroom #5 featuring hardwood floors, crown molding and closet
- Renovated Full Hallway Bath featuring tiled floor, pedestal sink, shower with tile surround, glass shower doors
- Hallway Linen Closet
- Hallway with rear staircase

THIRD LEVEL

- Bedroom #6 featuring hardwood floors, casement windows, sconces, closet, Dressing Room with built-in cabinetry and drawers and en-suite Full Bathroom featuring tiled floor, tiled shower over tub, console sink
- Bonus Room/Bedroom #7 featuring hardwood floors and casement window
- Recreation Room/Bonus Room featuring hardwood floors, built-in cabinetry and shelving, casement windows, eave storage and utility closet
- Two storage areas and cedar closet

LOWER LEVEL

- Mud Room with storage closet
- Laundry Room with Kenmore Washer and Whirlpool and Maytag Dryers
- 2 Storage Rooms (easily converted to Exercise, Media and/or Wine Cellar)
- Utility Room

CARRIAGE HOUSE / GARAGE

- Full Bathroom featuring hardwood floors, washstand sink, tiled shower and glass shower doors
- Recreation/Media Room featuring vaulted ceiling with exposed beams, hardwood floors, exposed brick, wet bar, recessed lighting, built-in sound system and components, storage
- 4 car garage featuring adjacent work/storage area and original folding carriage doors with true divided lights and inset paneling
- A/C, Hot water and heat
- Alarm System

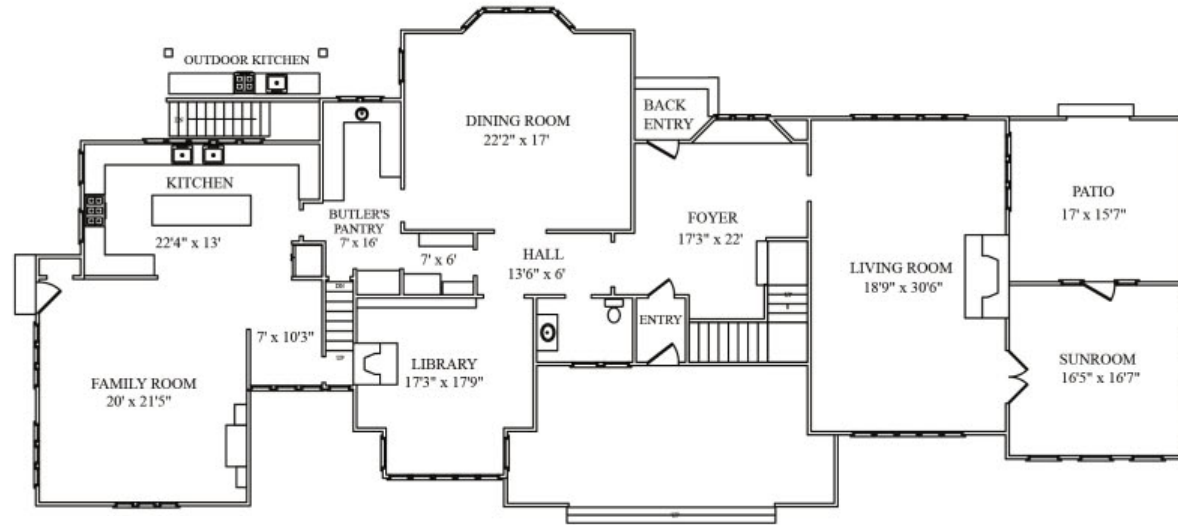
EXTERIOR

- 2.46 lush acres
- Front Entry featuring board and batten style wood door with Tudor arch, carved stone door framing, exterior lanterns, patterned stonework landing
- Circular driveway with original cobblestone gutters
- Oversized bluestone patio running almost entire length of the home featuring outdoor kitchen with built-in BBQ, stone countertop, stainless steel appliances, cooktop and wet bar
- Bluestone Terrace off of Sun Room featuring rustic brick knee walls
- Two pergolas and mature shade trees
- Secret Garden framed with adjacent stone walls and lush plantings

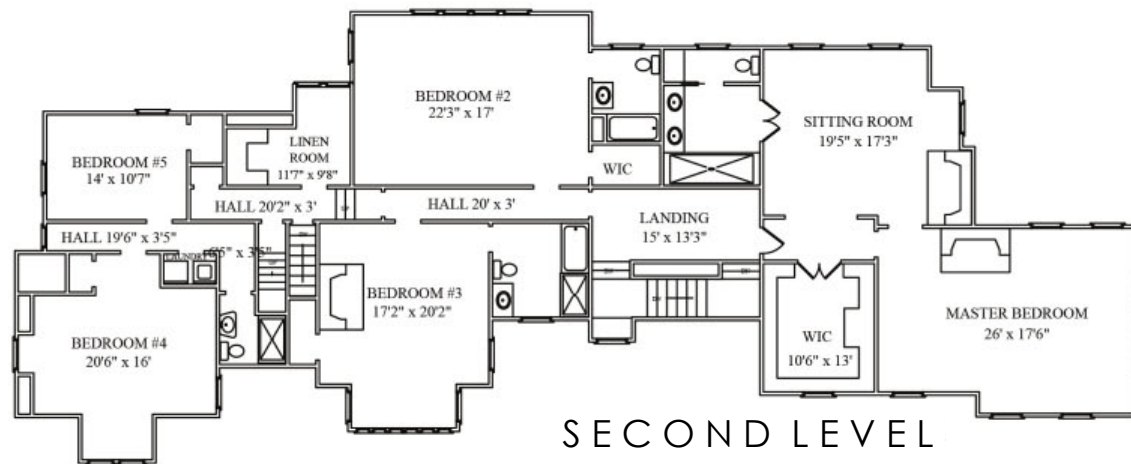
ADDITIONAL FEATURES / UPGRADES

- 2018/19 renovation of Kitchen, Family Room, (with steel reinforcement added to ceiling to create true open floorplan feel) Powder Room, Master Bathroom and Master Bedroom and new doors and lighting fixtures throughout
- Slate roof
- Copper gutters
- 3-zone A/C
- Alarm system
- In-ground irrigation
- 2 Culligan water softeners
- Heated 4 car garage with restored original carriage doors

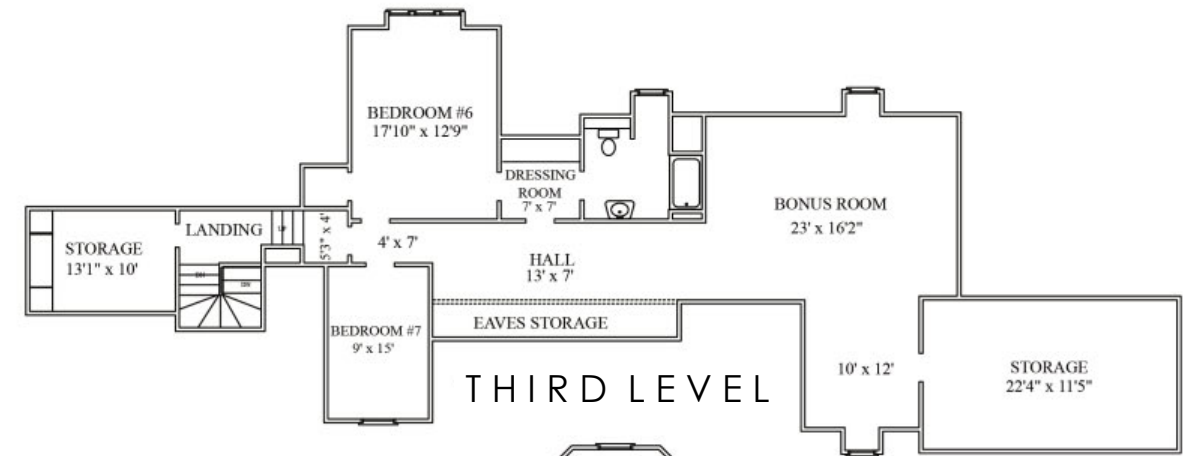
THE FLOORPLAN



FIRST LEVEL



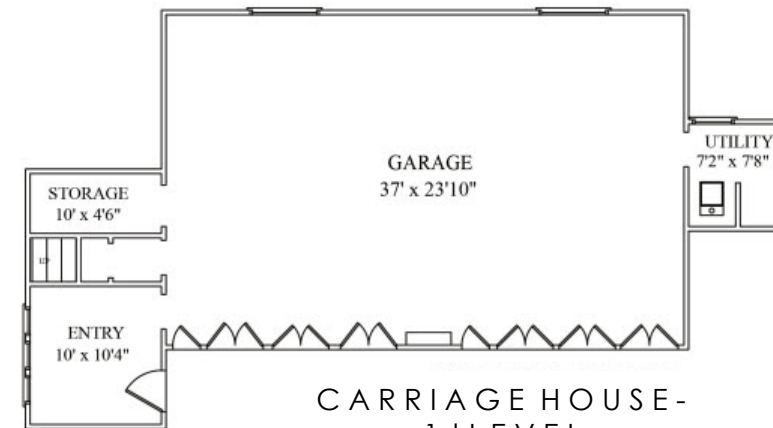
SECOND LEVEL



THIRD LEVEL



LOWER LEVEL



CARRIAGE HOUSE - 1st LEVEL



CARRIAGE HOUSE - 2nd LEVEL

