

10 Birchwood Drive

Short Hills, New Jersey



Sue Adler
KELLER WILLIAMS
PREMIER PROPERTIES

sueadler 
THE #1 KELLER WILLIAMS TEAM IN NEW JERSEY team

Each Keller Williams office is independently owned and operated.

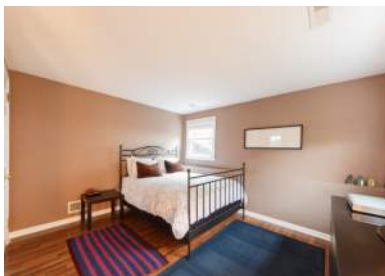
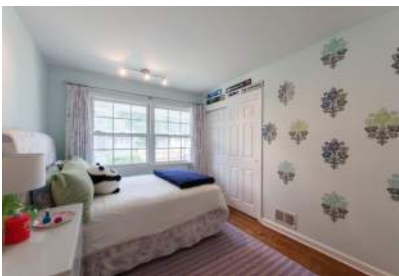


Step right into this charming, move-in-ready home in the sought-after Glenwood section of Short Hills, blocks from the Glenwood Elementary School and the train to NYC. This well-maintained home has been updated by its current homeowners, all while staying true to the original character and charm of the classic home and neighborhood.

As you enter the home, the open and airy floor plan comes into view and leads you into the living and dining rooms featuring hardwood floors and ready to host your next dinner party in complete style. The updated gourmet eat-in kitchen will suit any cooking endeavor with granite counters, tile backsplash and breakfast bar for more informal dining.

Down the hall, three bedrooms and two full bathrooms assure a restful night's sleep for all. The tranquil master bedroom features hardwood floors and two closets. The master bathroom features a slate tile floor and stall shower.





The finished lower level includes a recreation room with space for indoor play, bedroom with en-suite full bathroom and a laundry room.

Outside, the flat and level yard is ready for all your outdoor hobbies and the patio is ready for your entertaining needs.

It is not often that a home of this quality comes along. This is a fabulous opportunity to enjoy all Short Hills and the Glenwood section has to offer in complete comfort and style.

Inside and Out...

First Level

- Living room with hardwood floor, crown molding and recessed lighting
- Dining room with hardwood floor and picture window
- Coat closet
- Kitchen with tile floor, granite counter, breakfast bar, tile backsplash and stainless steel appliances
- Bathroom with slate tile floor, honed granite countertop, subway tile backsplash and shower over tub
- Bedroom with hardwood floor and closet
- Master bedroom with hardwood floor and two closets
- Master bathroom with slate tile floor, stall shower with subway tile backsplash
- Bedroom with hardwood floor and closet

Lower Level

- Recreation room with laminate floor and decorative fireplace
- Bedroom with laminate floor and closet
- Bathroom with tile floor and stall shower

Additional Features

- Driveway sealed and coated (2013)
- Exterior painted (2012)
- New front door and screen (2012)
- Retaining wall and path (2009)
- First level bathrooms updated (2008)
- Refinished floors (2008)



THE FLOOR PLAN



GROUND LEVEL

NOT TO SCALE - This floor plan is provided for illustration purposes only. Room positions and dimensions are approximate and should be independently measured for accuracy.



Cell: (973) 464-9129
Office: (973) 376-0033 x101
Sue@sueadler.com
www.sueadler.com/10birchwood

Sue Adler
KELLER WILLIAMS
PREMIER PROPERTIES

sueadler 
THE #1 KELLER WILLIAMS TEAM IN NEW JERSEY team