



Sue Adler
KELLER WILLIAMS
PREMIER PROPERTIES

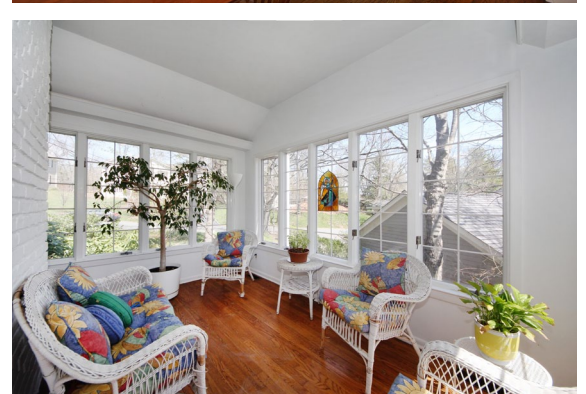


Cell: (973) 464-9129
Office: (973) 376-0033 x 101
VIP@SueAdler.com
www.SueAdler.com/10FoxHill

10 Fox Hill Lane
SHORT HILLS | NEW JERSEY

sueadler 
team

Each Keller Williams office is independently owned and operated.



It's all here - a home with great flow, a gorgeous setting of almost a half acre and a prime location where shopping, recreation, top schools and NYC commuter trains are at your fingertips.

This classic colonial, with slate roof, satisfies all the top items on your list. Framed by lovely trees and shrubbery, curb appeal is unmistakable.

Inside, hardwood floors serve as your introduction and continue from the spacious foyer into the adjoining rooms. Designer colors set the stage for a wide array of tastes and furnishing. In the living room, the fireplace takes the chill off cool evenings and adds a blaze of drama to any occasion.

The kitchen features an oak floor, quality appliances

arranged for easy access and a large eating area. For more formal occasions, the dining room is poised to host your next dinner party.

The library, with fireplace, is located off the living room, and is ideal as a home office or study. An enclosed porch next to the library is flooded with morning sunlight and provides the perfect place to enjoy your first cup of coffee.

A guest bedroom with full en suite bath is conveniently situated off the kitchen.



Four additional bedrooms and two full baths occupy the second level. The master bedroom has plenty of space for a sitting area and includes a full en suite master bath. The remaining bedrooms are nicely decorated and enjoy ample closet storage. The hall bath comes well equipped to help everyone through the morning rush.

A staircase leads to the large attic with a huge cedar closet. High ceilings suggest the option for finishing.

Partially finished, the lower level features a recreation room, half bath, laundry room and workshop. Comfortable and spacious, the recreation room is ideal for indoor play and casual entertaining.

A large screened-in porch is located off the dining room, and is perfect for summer entertaining. Here you can enjoy your lovely surroundings well into the evening hours. Outside, the yard is deep and private. There is plenty of open space for active play, as tall trees supply dappled shade.



Inside and Outside...

FIRST LEVEL

- Foyer with dentil molding and hardwood floor
- Living room with hardwood floor, dentil molding, fireplace and bay window
- Screened porch with slate floor and cathedral ceiling
- Dining room with hardwood floor, chair rail and dentil molding
- Kitchen with hardwood floor, molding, ample counters, custom cabinets, GE double oven, gas range, dishwasher and breakfast area
- Bedroom 5 with hardwood floor, two closets and en suite full bath with tile floor, wainscoting, sink and tile shower/tub
- Library with hardwood floor, wood molding and wood-burning fireplace
- Sun room with hardwood floor and tray ceiling

SECOND LEVEL

- Master bedroom with hardwood floor, crown molding and two closets
- Master bath with tile floor, tile wainscoting, vanity with sink and tile shower
- Bedroom 2 with hardwood floor and closet
- Bedroom 3 with hardwood floor and closet
- Bedroom 4 with hardwood floor, closet and walk-in closet with staircase to attic storage
- Hall bath with tile floor and wainscoting, sink and tile shower/tub
- Hallway with linen closet

THIRD LEVEL

- Attic with substantial storage space and the potential for finishing
- Huge cedar closet

LOWER LEVEL

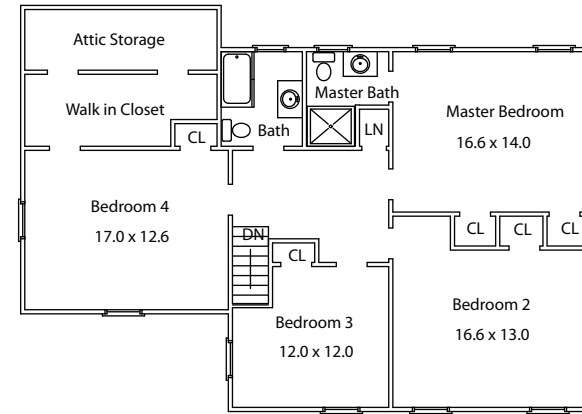
- Recreation room with wood paneling and dry bar
- Laundry room with washer, dryer and workbench
- Powder room with vanity/sink
- Closet storage under the stairs
- Utility/storage room with access to the garage

ADDITIONAL FEATURES

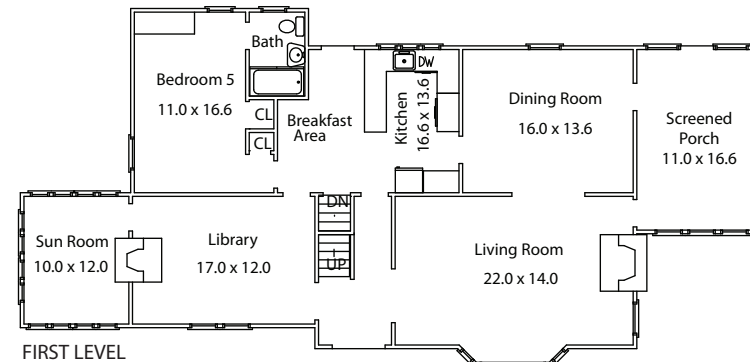
- Forced air heating and central air conditioning
- Clapboard exterior
- Flagstone front walkway
- Paved driveway with Belgian block curbs and additional parking
- Built-in 2-car garage with automatic garage door opener and interior access
- Deep, private backyard
- Professionally landscaped property includes mature trees, foundation shrubbery and established lawns
- Down the street from Old Short Hills Park and near South Mountain Reservation
- Highly desirable Deerfield location offers easy access to major highways, shopping, recreation, top rated schools and NYC commuter trains

PROPERTY PARTICULARS

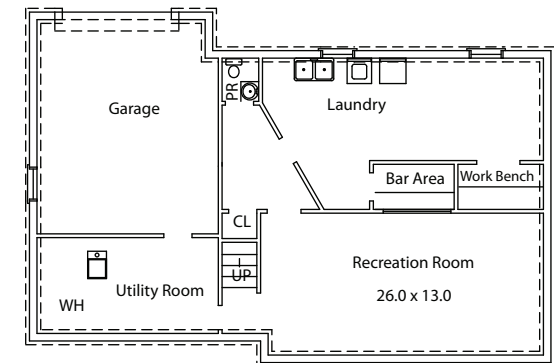
- Built: 1941
- Lot Size: 95 x 189 (.41 Acre)
- 2010 Taxes: \$18,740



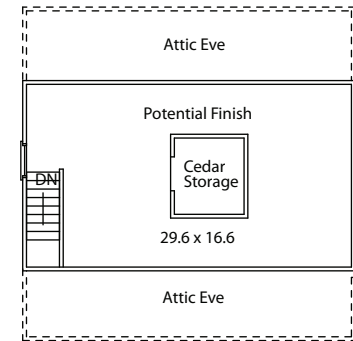
SECOND LEVEL



FIRST LEVEL



LOWER LEVEL



THIRD LEVEL