

17 CROSS WAY | NEW PROVIDENCE





Welcome to 17 Cross Way! This charming, wonderfully maintained home in the highly desirable Murray Hill section of New Providence features a fluid floor plan with lovely gathering places, room for privacy and comforts that come with single floor living. At the heart of the main level, a light filled and spacious Living Room and elegant Dining Room open to a Gourmet Chef's Kitchen with gleaming hardwood floors throughout, custom cabinets, Granite countertops, stainless steel appliances, including a six-burner Wolf stove, warming drawer, double ovens and much more. The custom Kitchen adjoins a lovely eat-in space that is perfect for casual dining. A well-appointed Master Retreat is on the main level and features a generous walk-in closet and en suite Bathroom. Nestled in the rear is a private second Bedroom, renovated Hall Bathroom and a cozy Den/Bedroom that features custom built-ins for storage or display along with a door that leads to a light-filled Sun Room and spacious yard.





Move into the updated Kitchen where you are sure to be impressed. The Kitchen is ideal with crisp white cabinetry, granite countertops, stainless backsplash and stainless steel appliances. A conveniently located door makes indoor/outdoor entertaining seamless. A tasteful Powder Room with charming bead board vanity rounds out the First Level. Walk down a few steps to find the Lower Level with plenty of storage space and a spacious Laundry Area. When it's time to retire for the evening, walk upstairs to find 3 spacious Bedrooms steeped in sunlight and with plenty of closet space. A spacious updated Hallway Full Bath is the perfect complement to this level.

Topping off the interior is a custom designed and masterfully built Lower Level that is large enough for entertaining family and friends or alternatively, as a teen or in-law suite or exercise studio. Adorned with a gas fireplace, custom media cabinet and handsome handcrafted Oak Bar with an accompanying wet bar, the Lower Level Family Room can be accessed from the 2 Car Garage.

Completing the package, relax after a long day in the sumptuous spa bath with a custom designed two-person Jacuzzi and walk-in shower that was inspired by a visit to a trendy Berlin Hotel. Minutes from New Providence's Blue Ribbon Schools, NJ Transit Lines, shopping, restaurants and the Watchung Reservation, 17 Cross Way is easy to call home.



INSIDE & OUT

FIRST LEVEL

- Carpeted stairway with recessed lighting to Lower Level Family Room featuring tile floors, custom bead board paneling with chair rail, baseboard and crown molding, 2 windows at 2 exposures, handcrafted oak bar with seating for four, bartenders work counter, with ample storage for liquor and wine bottles, stainless beverage sink, Bar refrigerator, gas fireplace, recessed lighting, built in handmade wood media cabinet, door to 2 car large Garage with solid wood door and custom shelving, door to office nook with built in desk and storage and pendant light
- Full Hall Bath Spa featuring tile floor, recessed light, American Standard toilet, pedestal sink, open shelving, walk-in spa with sliding glass doors and floor to ceiling tile surround, shower and 2 person Jacuzzi with 11 jets and pull down faucet
- Yoga Studio/Exercise Room featuring tile floor, custom shelving, recessed lighting, 10-foot long floor to ceiling closet with shelving
- Laundry Room featuring tile flooring, window, utility sink, hanger and drying rack, pull-out folding shelf, Top Load White Kenmore Washer and Maytag Dryer, commercial lighting

- Office/Day Room featuring tile floor, window, closet with shelving, 2 decorative sconces

LOWER LEVEL

- Carpeted stairway with recessed lighting to Lower Level Family Room featuring tile floors, custom bead board paneling with chair rail, baseboard and crown molding, 2 windows at 2 exposures, handcrafted oak bar with seating for four, bartenders work counter, with ample storage for liquor and wine bottles, stainless beverage sink, Bar refrigerator, gas fireplace, recessed lighting, built in handmade wood media cabinet, door to 2 car large Garage with solid wood door and custom shelving, door to office nook with built in desk and storage and pendant light
- Full Hall Bath Spa featuring tile floor, recessed light, American Standard toilet, pedestal sink, open shelving, walk-in spa with sliding glass doors and floor to ceiling tile surround, shower and 2 person Jacuzzi with 11 jets and pull down faucet
- Yoga Studio/Exercise Room featuring tile floor, custom shelving, recessed lighting, 10-foot long floor to ceiling closet with shelving
- Laundry Room featuring tile flooring, window, utility sink, hanger and drying rack, pull-out folding shelf, Top Load White Kenmore Washer and Maytag Dryer, commercial lighting
- Office/Day Room featuring tile floor, window, closet with shelving, 2 decorative sconces

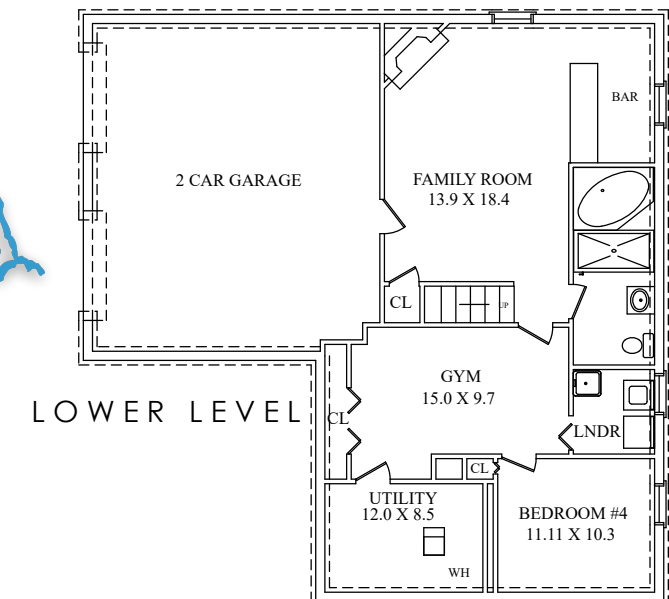
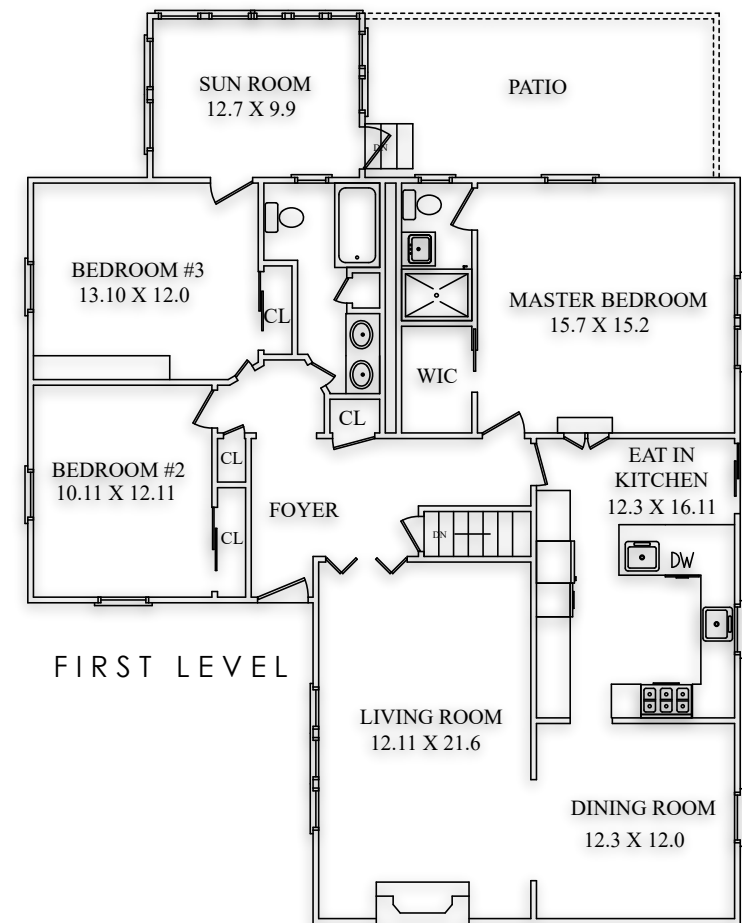
LANDSCAPING/BACKYARD

- Blue stone pathway to front covered blue stone landing with wrought iron railing and flush mount light fixture
- 2 outdoor lighting fixtures with built in timer
- Professionally landscaped, privacy hedges with blooming perennials

ADDITIONAL FEATURES & UPGRADES

- Brick paver patio (2018)
- New HVAC (2015)
- New Water Heater (2016)
- New Solid Wood Doors and Hardware (2011)
- New Custom Gourmet Kitchen and Appliances (2011)
- Renovated Hall Bathroom and Master Bathroom (2008)
- Renovated Lower Level Family Room with custom built bar, gas fireplace, built in shelving and Spa (2006)
- New Electrical Panel (2006)
- ADT Security System

THE FLOORPLAN



sueadler 
THE #1 KELLER WILLIAMS TEAM IN NEW JERSEY **team**

CELL: 973.936.9129
OFFICE: 973.376.0033 x101
EMAIL: info@sueadler.com
sueadler.com/17Crossway

kw PREMIER
PROPERTIES
KELLERWILLIAMS