

25 Maple Street

Chatham, New Jersey



Sue Adler
KELLER WILLIAMS
PREMIER PROPERTIES

Each Keller Williams office is independently owned and operated.



Set back off the street, this DeMarzo built colonial is loaded with curb appeal and ready for you to just unpack your bags. Step into the formal entry foyer featuring hardwood flooring with inlay wood, and leading you into the flanking Living and Dining rooms ready to entertain your guests in complete comfort and style. Central to the home is the eat-in kitchen with large center island featuring granite counter tops, Sub Zero refrigerator, Wolfe range and double oven, ample custom cabinetry and travertine tile flooring. With the kitchen open to the family room it makes entertaining that much easier. Featuring hardwood flooring, brick fireplace, and bay window overlooking the professionally maintained back yard, the Family room will surely be a popular spot. Just off the kitchen is the den, a great space to relax and enjoy the views of the property.

Past the kitchen and down the hallway you will find the library with custom built in book shelves. Across the hall is a recently updated full bath with custom glass enclosed shower featuring custom tile work, granite counter top vanity, and custom wainscoting details. At the end of the hall you will find the laundry room, which has plenty of space to wash and fold. The room features newer washer and dryer, and cabinetry for storage.





Heading to the second floor you will find ample space for family and guests alike. The master bedroom suite with walk-in closet in any couple's dream and the spa-like bathroom features stall shower and jetted soaking tub. The other three bedrooms on the second level all feature carpet flooring, ample closet space, and two of the three bedrooms have ceiling fans. Finishing off the second level is the main hall bathroom. The updated bathroom features double granite topped vanity, custom white and glass tile flooring, and a custom glass enclosed shower with custom tile work.

And there is more...heading to the basement level you will find a great space ready for your imagination. With direct access to the two-car garage, the basement is a great space for a media room, extra office space or a play area.

Outside you will find that 25 Maple Street does not disappoint. With a large professionally landscaped backyard as the backdrop and rear deck to take in all the views, this is an excellent place to call home.

Inside and Out...

THE FLOOR PLAN

First Level

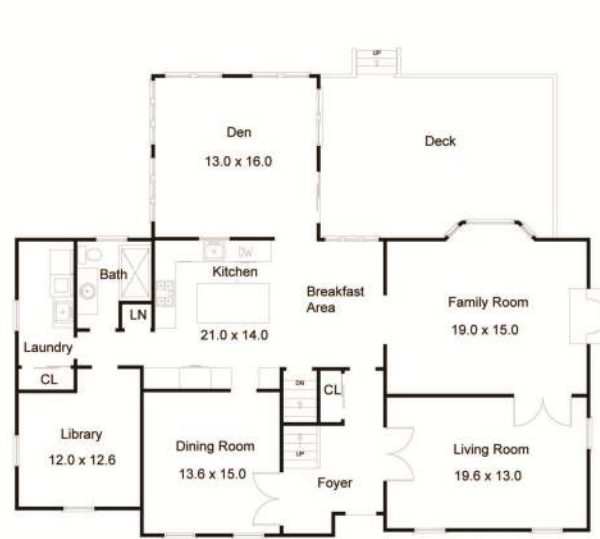
- Entry foyer with inlay hardwood floor
- Living room with carpet, crown molding and recessed lighting
- Family room with hardwood floor, gas fireplace, beamed ceiling, bay window, ceiling fan and recessed lighting
- Kitchen with tile floor, breakfast area, center island with granite counter tops, tile backsplash, stainless steel appliances including 5 burner Wolf range, double ovens and Sub-Zero refrigerator
- Dining room with carpet, wood detailing and French doors
- Den with carpet, crown molding, recessed lighting and sliding gas doors to deck
- Library with carpet and built-ins
- Bathroom with tile floor, wainscoting, stall shower with river stone floor
- Laundry room with tile floor, cabinetry, sink and closet

Second Level

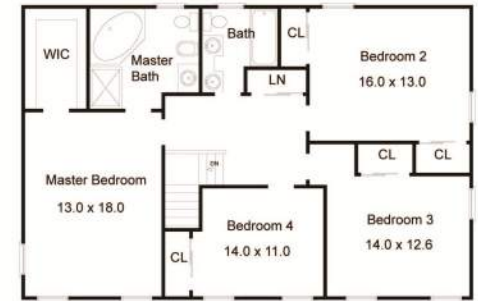
- Master bedroom with carpet, crown molding, walk-in closet and ceiling fan
- Master bathroom with tile floor, wainscoting, Jacuzzi tub and stall shower
- Bedroom with carpet and closet
- Bedroom with carpet, closet and ceiling fan
- Bedroom with carpet and two closets

Lower Level

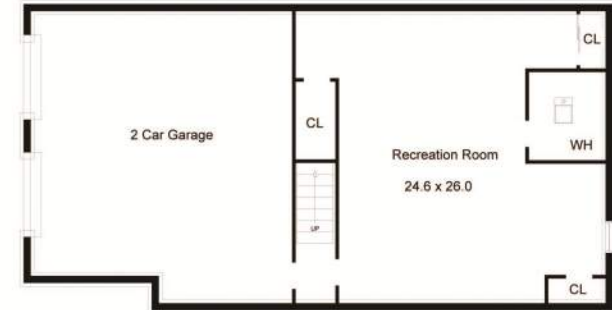
- Recreation room with carpet



FIRST LEVEL



SECOND LEVEL



LOWER LEVEL

NOT TO SCALE - This floor plan is provided for illustration purposes only. Room positions and dimensions are approximate and should be independently measured for accuracy.



Cell: (973) 464-9129
Office: (973) 376-0033 x101
Sue@sueadler.com
www.sueadler.com/25maple

Sue Adler
KELLER WILLIAMS
PREMIER PROPERTIES

sueadler 
THE #1 KELLER WILLIAMS TEAM IN NEW JERSEY team