



Sue Adler
KELLER WILLIAMS
PREMIER PROPERTIES



Cell: (973) 975-0197
Office: (973) 376-0033 x101
Sue@sueadler.com
www.SueAdler.com/291Partridge

291 Partridge Run
MOUNTAINSIDE | NEW JERSEY

sueadler 
team

Each Keller Williams office is independently owned and operated.



This magnificent center hall colonial is perfect in every way. From the second you arrive you are greeted by a perfectly manicured lawn with stunning landscaping. As you open the front door and enter the foyer you find hardwood floors flowing through-out. On either side of the foyer is the formal living and dining spaces, perfect for entertaining. As you walk down the center hall you enter the eat in kitchen featuring fresh cabinetry, stainless steel appliances and granite countertops. Step inside the adjacent den and relax while reading a book or enjoying time with friends and family.

On the second level you will find a master suite complete with hardwood floors, full master bath and walk in closet. Continue down the hall to find three more bedrooms with hardwood floors and an oversized hall bathroom, perfect for guests staying the night.

The partially finished basement provides plenty of storage space with an designated laundry area and access to the two car garage.

Step outside onto the paver patio with built-in grill great for outdoor entertainment . Off the patio enjoy the park like yard with mature landscaping.

Move in ready condition coupled with a fantastic piece of property make this home hard to resist.





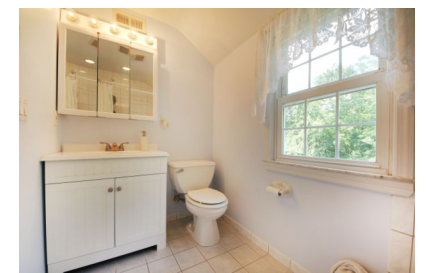
First Floor:

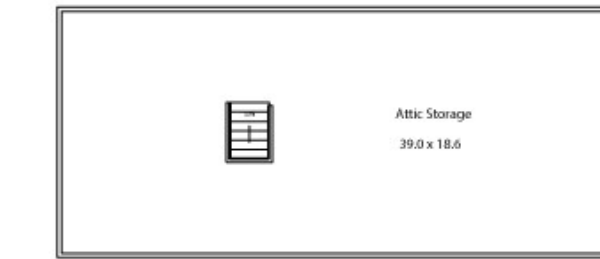
- Family room with fireplace and hardwood floors
- Dining room with glass door into kitchen
- Kitchen with stainless steel appliances, granite counter tops and freshly updated cabinetry.
- Den off eat in kitchen perfect for family fun
- Large sun-filled family room connects the back of the home to the flat back yard.



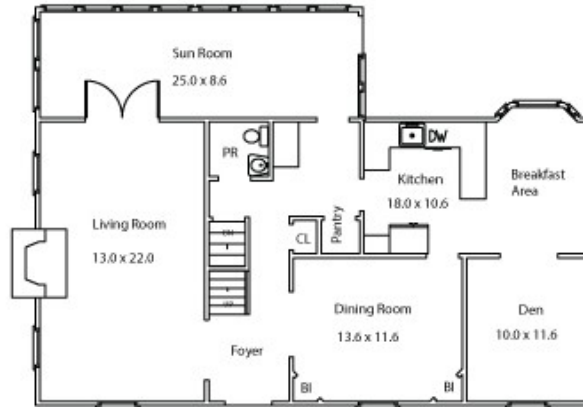
Second Floor:

- Master bedroom with hardwood floors, walk in closet and master bath
- Three additional bedrooms with hardwood floors
- Large closets in every bedroom
- Full hall bath can accommodate family and guests.

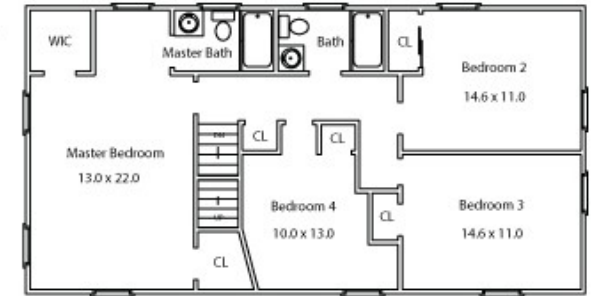




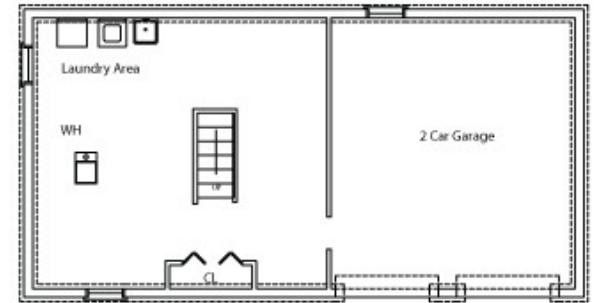
ATTIC LEVEL



FIRST LEVEL



SECOND LEVEL



LOWER LEVEL

The Floor Plan

Improvements:

- In-ground sprinkler system with rain sensor
- Landscape lights
- Blue stone stairs and path
- Deer resistant landscaping
- Exterior sound system in back yard (2 speakers)
- Built in gas barbeque
- Newly refinished hardwood flooring
- Freshly updated kitchen cabinetry
- New appliances, 5 burner stove w/ large convection oven
- Swing set with lighting

House Particulars:

- Beds: 4
- Baths: 2.5
- Year Built: 1950
- Lot Size: .354 acres

