



Sue Adler

KELLER WILLIAMS
PREMIER PROPERTIES



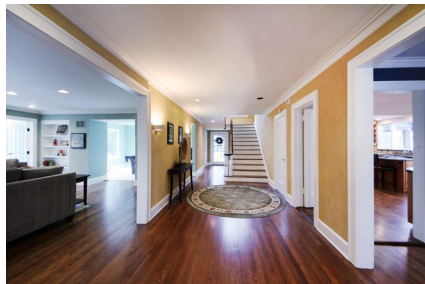
Cell: (973) 975-0197
Office: (973) 376-0033 x 101
VIP@SueAdler.com
www.SueAdler.com/365Redmond

365 Redmond Road

SOUTH ORANGE | NEW JERSEY

sueadler 

THE #1 KELLER WILLIAMS TEAM IN NEW JERSEY team



Light, bright and inviting, this exquisite Tudor combines classic charm together with the modern amenities required by today's buyers. Built in 1931, loving care and thoughtful updates have kept this fine home fresh and modern. Located in the desirable Wyoming section, recreation, schools, shopping and NYC commuter trains are only minutes from your front door. Inside, spacious rooms flow effortlessly from one inviting area to the next. As hardwood floors flow underfoot, large windows allow the sun's warm rays to reach into nearly every corner. The first level brings friends and loved ones together in an atmosphere that is warm and inviting, elegant and graceful. The designer kitchen is up-to-date and well prepared to help you express your culinary aspirations with confidence. A guest suite provides comfort for out-of town visitors while six spacious bedrooms occupy the second and third levels. The finished lower level is ideal for indoor play and casual entertaining, and offers substantial storage capacity.

THE FIRST LEVEL

- ◆ Foyer entry with hardwood floor, dentil molding, recessed lights and guest closet
- ◆ Living room with hardwood floor, dentil molding, recessed lights, built-in cabinets with shelves and a wood-burning fireplace
- ◆ Family Room with hardwood floor, vaulted ceiling, skylight and slider to the patio
- ◆ Dining room with hardwood floor and dentil molding
- ◆ Kitchen with hardwood floor, maple cabinets, garbage disposal, instant hot water, granite counters, tile backsplash, Sub-Zero refrigerator, GE gas range, Fisher & Paykel dishwasher, pantry closet with built-ins, recessed lights and separate breakfast area with picture window
- ◆ Solarium with limestone floor, crown molding, recessed lights, atrium window, built-ins and sliders to the patio
- ◆ Guest bedroom with wall-to-wall carpet, two double-width closets and a full en suite bath with marble vanity and tile shower
- ◆ Powder room with tile floor, recessed lights and vanity with sink





THE SECOND & THIRD LEVELS

- ♦ Master bedroom with hardwood floor, built-in granite cabinets with storage shelves and closet storage
- ♦ Master bath with marble tile floor and walls, track lighting, recessed lighting, walk-in tile shower, vanity with granite counter top and spa tub with marble tile surround
- ♦ Bedroom 2 with hardwood floor, track lighting, crown molding, walk-in closet with built-ins and shared access to a Jack n' Jill bath
- ♦ Jack n' Jill bath with double vanity, tile floor and tile shower/tub
- ♦ Bedroom 3 with wall-to-wall carpet, crown molding, ceiling fan, walk-in closet with built-ins and shared access to a Jack n' Jill bath
- ♦ Bedroom 4 with wall-to-wall carpet, crown molding, beadboard wainscoting, double-width closet and a full en suite bath with tile shower/tub
- ♦ Bedroom 5 with wall-to-wall carpet, recessed lights and closet
- ♦ Media Room/7th Bedroom, located on the third level, features wall-to-wall carpet, recessed lights and closet
- ♦ Full bath with tile floor, subway tile wainscoting, recessed lights and tile shower

LOWER LEVEL

- ♦ Recreation room with tile floor, wood paneled walls and overhead lighting
- ♦ Laundry room with tile floor, washer and dryer
- ♦ Utility and storage rooms

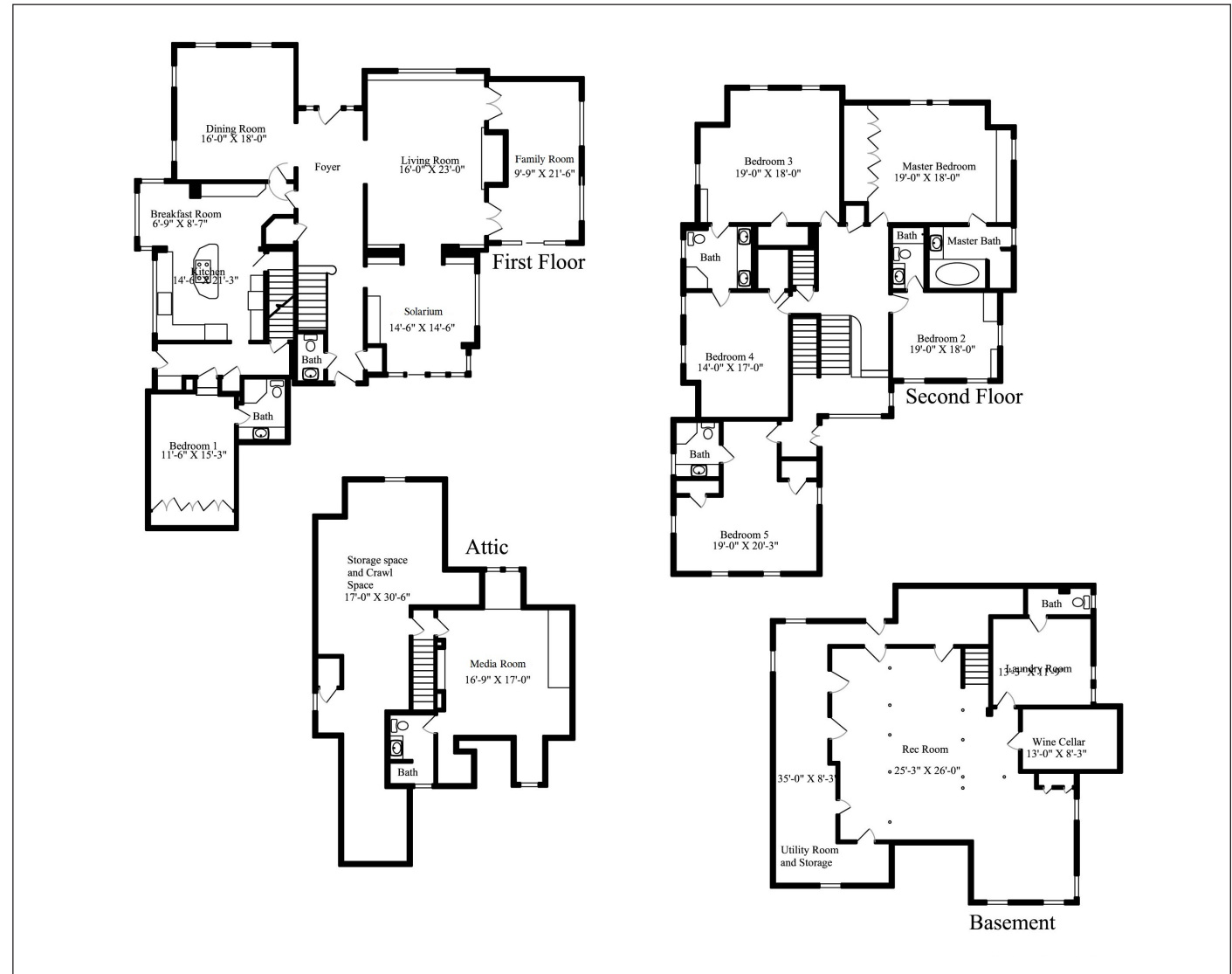


ADDITIONAL FEATURES

- ◆ Property backs to Orange Lawn Tennis Club
- ◆ Multi-zone central air conditioning
- ◆ Security system
- ◆ Updated kitchen and baths
- ◆ Stucco exterior
- ◆ Covered front entry
- ◆ Slate front walkways
- ◆ Paved driveway with Belgian block curbs and additional parking
- ◆ In-ground swimming pool with patio surround
- ◆ Paver patio overlooking a private backyard
- ◆ Underground lawn sprinkler system
- ◆ Professionally landscaped property includes mature trees, foundation shrubbery and established lawns

PROPERTY PARTICULARS

- ◆ Built: 1931
- ◆ Lot Size: .45 Acre
- ◆ 2011 Taxes: \$27,907



Centrally located, residents of this quiet street enjoy easy access to major highways and business centers. Recreation, schools, Village shopping and NYC commuter trains are only minutes from your front door.

With little to do except bring your decorating ideas and furnishings, this remarkable home brings a unique opportunity to take full advantage of all South Orange Village has to offer in complete comfort and supreme style.

Disclaimer: Information contained in this brochure is deemed reliable but not guaranteed and should be independently verified by the buyer(s). Keller Williams Realtors and agents acting on their behalf for the purpose of creating this brochure are not responsible for typographical errors, misprints or misrepresentations and are therefore held totally harmless. This listing is subject to price changes and/or withdrawal without prior notice.

