



Sue Adler
KELLER WILLIAMS
PREMIER PROPERTIES



Cell: (973) 975-0197
Office: (973) 376-0033 x 101
VIP@SueAdler.com
www.SueAdler.com/472Elmwood

472 Elmwood Avenue

MAPLEWOOD | NEW JERSEY

sueadler 
THE #1 KELLER WILLIAMS TEAM IN NEW JERSEY team

Each Keller Williams office is independently owned and operated.



Traditional appeal is on display in this true center-hall colonial. Positioned to take full advantage of all Maplewood has to offer, this engaging home requires only your furnishings and personal touch. As spacious rooms flow effortlessly from one inviting area to the next, a designer's palette and period detailing are enhanced by abundant sunlight. Entertain, relax and enjoy, this fine home is made for all seasons and every occasion.

THE FIRST LEVEL

- ◆ Center-hall foyer with hardwood floor, guest closet, stairs to the second level and open entry to the adjoining rooms
- ◆ Living room with hardwood floor, front bay window, built-in shelves, French doors to the den and a wood-burning fireplace
- ◆ Formal dining room with hardwood floor, crown molding, panel wainscoting and front bay window
- ◆ Den with wall-to-wall carpet, track lighting and crown molding
- ◆ Updated kitchen with tile floor, ample cabinets and counter space, track lighting, Whirlpool gas range, dishwasher and refrigerator, closet, breakfast area and door to the backyard
- ◆ Powder room with vanity/sink
- ◆ Stairs to the lower level across from the powder room





THE SECOND LEVEL

- ♦ Master bedroom with hardwood floor, ceiling fan, two closets flanking the built-in window seat and a walk-in closet with walk up access to the attic
- ♦ Bedroom 2 with hardwood floor, ceiling fan and closet
- ♦ Bedroom 3 with hardwood floor, beadboard wainscoting and closet
- ♦ Full bath with tile floor, double vanity with two sinks and tile shower/tub



THE LOWER LEVEL

- ♦ Recreation room with wall-to-wall carpet and recessed lights
- ♦ Laundry area including a washer, dryer and dual laundry sinks, walkout access to the backyard
- ♦ Unfinished storage room with access to utilities

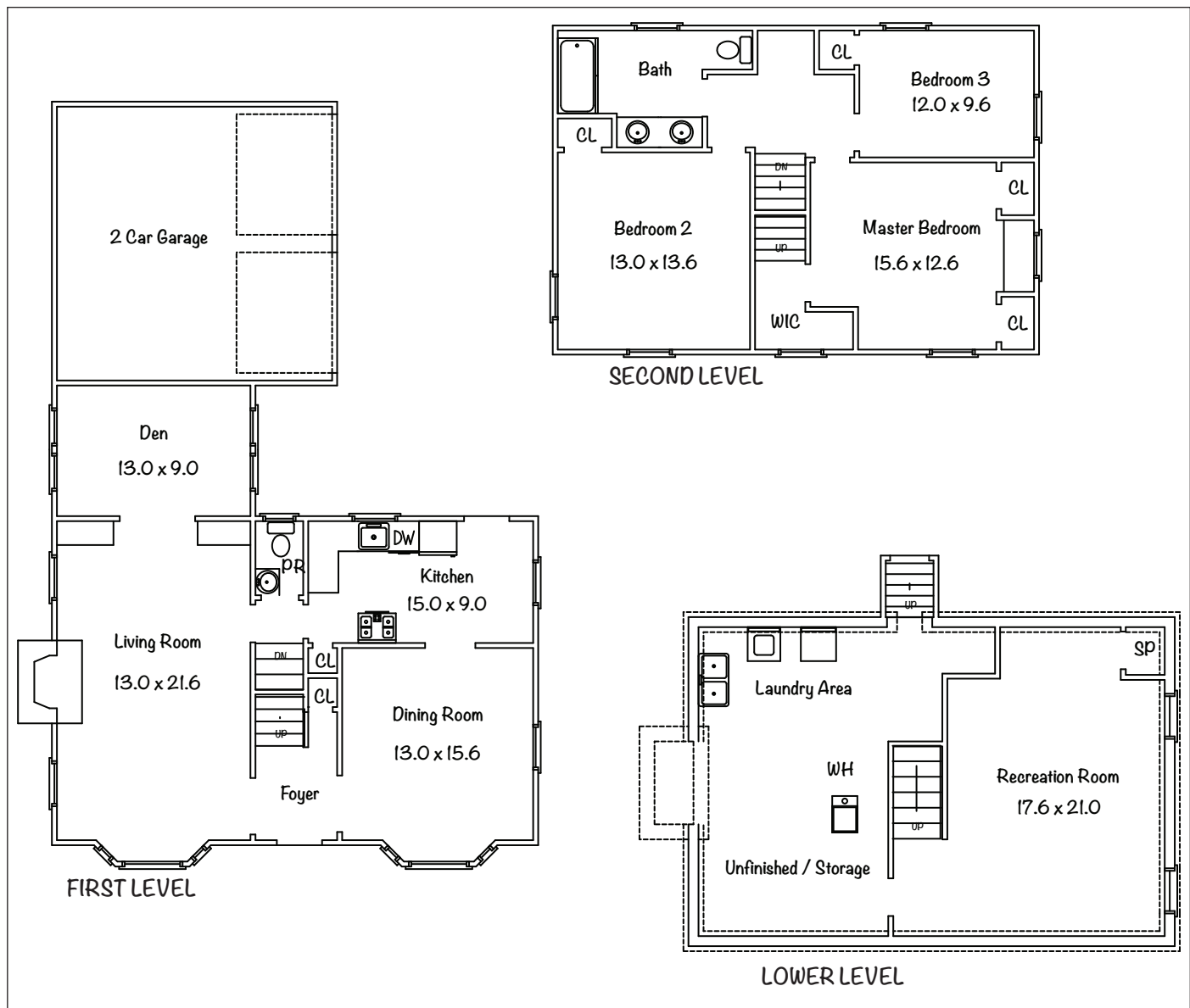


ADDITIONAL FEATURES

- ◆ Natural gas forced air heating
- ◆ Central air conditioning
- ◆ Versatile decor, furniture quality built-ins, moldings and trim
- ◆ Clapboard exterior with slate roof
- ◆ Concrete front walkway and brick steps with wrought iron railings
- ◆ Paver patio overlooks a private backyard
- ◆ Paved driveway with additional parking
- ◆ Attached 2-car garage
- ◆ Professionally landscaped property includes mature trees, foundation shrubbery and established lawns
- ◆ Prime location just blocks from Village shopping, recreation, schools and NYC commuter trains
- ◆ Easy access to major highways, business centers and Newark / Liberty International Airport

PROPERTY PARTICULARS

- ◆ Built: 1932
- ◆ Lot Size: 50 x 134
- ◆ 2010 Taxes: \$14,709



This is just what "move-in condition" really means. Loving care and thoughtful updates have kept this fine home fresh and modern. Outside, the backyard is private and spacious. The paver patio welcomes your picnic tables and lawn chairs, while the backyard is made for active play and gardening. Cross off those top items on your list. This fabulous center-hall colonial brings generous interior spaces, a prime location and pretty setting together in one fabulous package.

Disclaimer: Information contained in this brochure is deemed reliable but not guaranteed and should be independently verified by the buyer(s). Keller Williams Realtors and agents acting on their behalf for the purpose of creating this brochure are not responsible for typographical errors, misprints or misrepresentations and are therefore held totally harmless. This listing is subject to price changes and/or withdrawal without prior notice.