

81 Shrewsbury Drive

Livingston, New Jersey



Sue Adler
KELLER WILLIAMS
PREMIER PROPERTIES





Welcome to 81 Shrewsbury Drive, set back on .88 private, park-like acres with mature landscaping. Located in sought after Livingston this classic center hall colonial will leave you with lasting impressions.

Enter the home and into the entry foyer where you catch your first glimpse of the open and airy floor plan and custom detailing seen throughout the home. Marble tile floors lead you from the entry hall into the inviting living room with hardwood floors and dentil molding. With inlaid hardwood floors, skylights and walk-in closet, the dining room is a perfect place to entertain all your dinner guests in complete style. The light and bright, family room features bay window, ushering in plenty of natural sunlight and the wood fireplace provides the perfect touch for entertainment, movies and relaxation. Steps away, the gourmet eat-in kitchen has all the amenities even the fussiest of chefs would appreciate. With granite counters, vaulted ceiling, pantry, top of the line stainless steel appliances, dining area, and plenty of storage, this kitchen is sure to impress. Enjoy dining al fresco on the private patio with views overlooking the tranquil property. Completing this level is a powder room, mudroom/laundry room and access to the oversized two-car garage.

When the evening draws to a close everyone will find their own personal retreat in one of four bedrooms, including the master suite with large walk-in closet. With plush carpeting, crown molding and spa-like master bathroom with Jacuzzi tub and walk-in shower the master suite is nothing short of perfection. Three additional bedrooms, a full bathroom and two large hall linen closets complete the second level.

The finished lower level is home to the recreation area, office and full bathroom. No need to buy that gym membership that often goes unused-there's even an Exercise room.

Outside, the tiered private and serene grounds can be enjoyed by all with flat yard space and sports court, perfect for all your outdoor hobbies.

With little to do except bring your furnishings and personal touch, this is a fabulous opportunity to enjoy all Livingston has to offer.

Inside and Out...

First Level

- Entry foyer with marble tile floor and coat closet
- Living room with hardwood floor and dentil molding
- Dining room with inlaid hardwood floor, bay window, walk-in closet, skylight and recessed lighting
- Family room with carpet, fireplace with brick surround, bay window, crown molding and recessed lighting
- Kitchen with hardwood floor, center island and breakfast bar, granite counters, tile backsplash, two sinks-one for prep, work area with cabinets and granite counter, stainless steel appliances including Viking 6-burner range and griddle, Viking double ovens and warming drawer, Sub-Zero refrigerator, dishwasher and garbage disposal
- Mudroom/Laundry with tile floor, cabinets and sink
- Butler's pantry with granite counter and Sub-zero wine refrigerator
- Powder room with marble tile floor, built-in shelving and pedestal sink

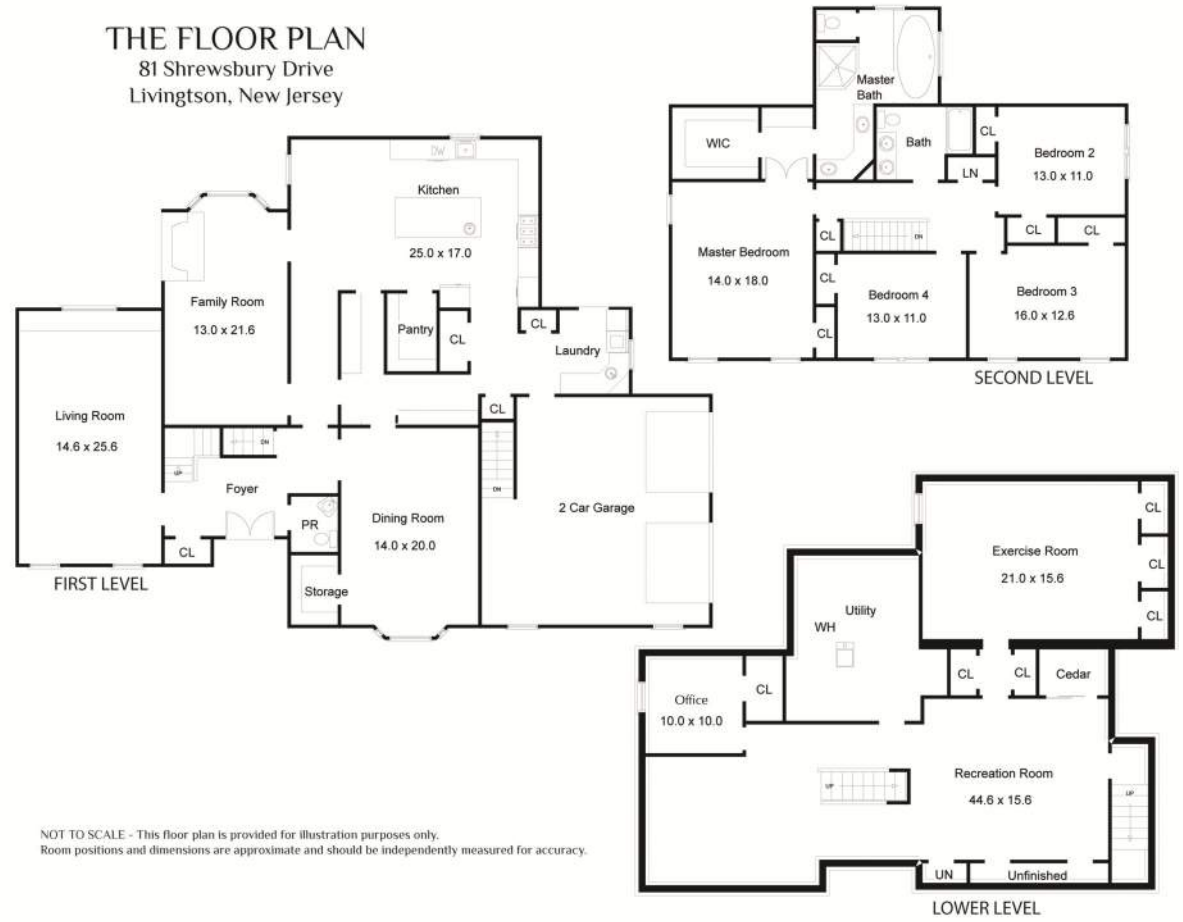
Second Level

- Master bedroom with carpet, dentil molding, two closets-one walk-in and recessed lighting
- Master bathroom with tile floor, dressing area, limestone vanity with double sinks, walk-in shower, Jacuzzi tub and palladium windows
- Bedroom with carpet, closet with custom shelving and recessed lighting
- Bedroom with carpet, closet with custom shelving and recessed lighting
- Bedroom with carpet, two closets with custom shelving
- Bathroom with tile floor, vanity with double sinks and shower over tub
- Closet

Lower Level

- Office with carpet, closet and recessed lighting
- Recreation room with carpet and recessed lighting
- Gym with mirrored walls, two closets and recessed lighting
- Bathroom with carpet and stall shower
- Utility/Storage room

THE FLOOR PLAN 81 Shrewsbury Drive Livingston, New Jersey



NOT TO SCALE - This floor plan is provided for illustration purposes only. Room positions and dimensions are approximate and should be independently measured for accuracy.

Additional Features and Updates

- Addition and reconfiguring of home including kitchen, master bathroom, gym, dining room and basement (2001)
- Hot water heater (2012)
- Upstairs and downstairs furnace and air conditioner (2001)
- Downstairs air conditioner (2011)
- Phone intercom system
- Pella windows
- Water Softener Owned
- Central Vacuum
- Gas grill
- Sprinkler system
- Paver patio
- Sports court
- Invisible fence
- 2-tiered yard



Sue Adler
KELLER WILLIAMS
PREMIER PROPERTIES

Cell: (973) 464-9129
Office: (973) 376-0033 x101
Sue@sueadler.com
www.sueadler.com/81shrewsbury

