

536 Snyder Avenue

Berkeley Heights, New Jersey



Sue Adler
KELLER WILLIAMS
PREMIER PROPERTIES

sueadler 
THE #1 KELLER WILLIAMS TEAM IN NEW JERSEY team

Each Keller Williams office is independently owned and operated.



Welcome to 536 Snyder Avenue! This immaculate, updated 3 Bedroom, 1 Bath home, located just steps from Thomas Hughes Elementary, hits all the right notes. Enjoy all this home has to offer with top-notch schools, vibrant downtown area, easy access to Route 78 and New York City train.

Step inside the welcoming front door to find the Entry Foyer featuring gleaming hardwood floors and generous Coat Closet. Enter the blissful, sun drenched Living Room with huge windows, hardwood floors and soothing neutral tones. Flow easily into the luminous formal Dining Room ready for hosting dinner parties with family and friends. The open and airy Family Room is divine with large windows at 3 exposures and beautiful views of the lush backyard. A sliding glass door leading out to the large brick patio makes indoor and outdoor entertaining seamless. Gourmet meals are a snap in the picture perfect renovated Kitchen featuring custom wood cabinetry, ample counter space with granite and high-end stainless steel appliances.

Take a few steps down from the Kitchen through the charming French door to the spacious Lower Level featuring a charming Recreation Room/Playroom with bead board wainscoting, built-in shelving and tile flooring. A 1 car garage and spacious Laundry/Utility Room with plenty of storage round out this level.



Ready to retire for the evening? Walk upstairs to find 3 generously sized bedrooms gleaming with natural light. The Master Bedroom is spacious and well-designed with a large double door closet with stunning wood doors. The two additional Bedrooms feature plenty of light and abundant closet space. The Bedrooms share the gorgeously renovated Hall Full Bath featuring crisp white tile, stunning wood look floor and tasteful vanity.

And there's more! The real show stopper of this home is the private and flat backyard with large brick patio and blooming perennials. Whether it's al fresco dining or hosting family and friends, you will love spending time in this backyard oasis.

With its incredible neighborhood, top notch schools, proximity to New York City and convenience to fantastic shopping and restaurants, 536 Snyder is an absolute must see!

Inside and Out...

First Level

- Entry Door with stained glass
- Entryway featuring hardwood floors, baseboard molding, crown molding, coat closet
- Living Room featuring hardwood floors, baseboard molding, crown molding, large picture window, recessed lighting, roman shades, ductless AC
- Dining Room featuring hardwood floors, chandelier, baseboard molding, crown molding, window with wood blinds
- Family Room featuring tile flooring, casement windows, sliding glass doors out to patio, stainless steel ceiling fan with light, baseboard molding, baseboard heat
- Renovated Kitchen featuring custom cabinetry, custom wine storage, granite countertops, glass door cabinets, stainless steel GE refrigerator, stainless steel GE Profile dishwasher, stainless steel Jenn-Air Oven/Range, stainless steel built-in GE microwave, stainless steel sink, gooseneck fixture, ceiling fan with light, plate rack, greenhouse window, French door to Lower Level

Second Level

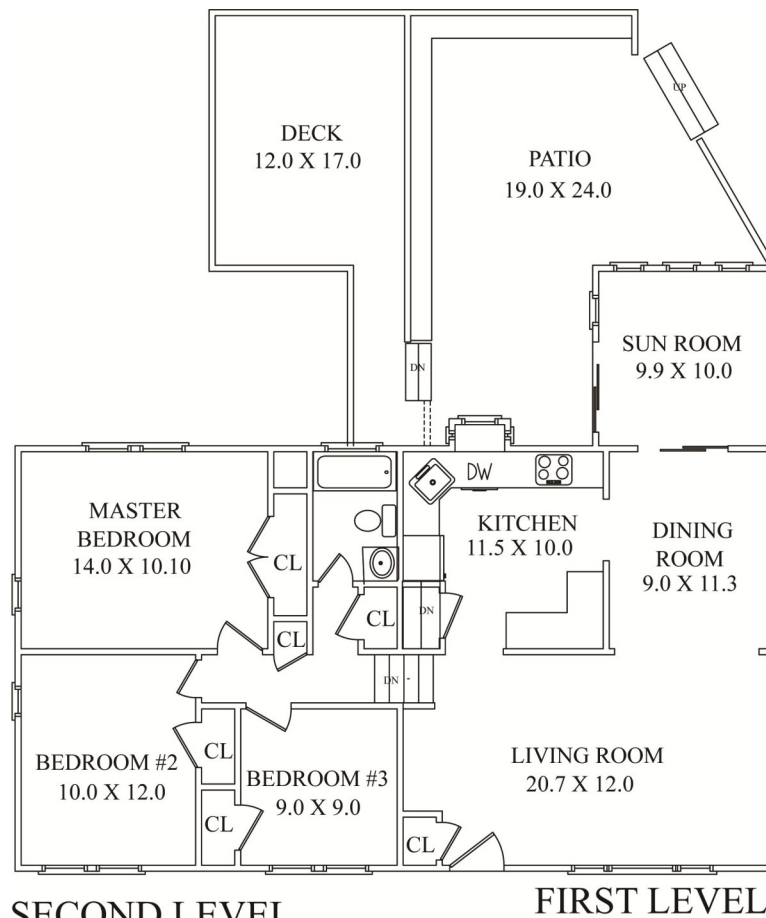
- 2nd floor landing featuring hardwood floors, baseboard molding, crown molding, 2 linen closets with floor to ceiling shelving
- Master Bedroom featuring hardwood floors, baseboard molding, crown molding, double closet with custom wood doors, ductless AC, recessed lighting
- Bedroom #2 featuring hardwood floors, crown molding, baseboard molding, closet, ductless AC
- Bedroom #3 featuring hardwood floors, crown molding, baseboard molding, closet, ductless AC, recessed lighting
- Renovated Full Bath featuring white tile wainscoting, wood vanity with storage, ceiling light/fan, shower over tub, hand held showerhead, 3 light sconce, wood framed mirror

Lower Level

- Carpeted staircase to Lower Level
- Recreation Room with tile flooring, bead board wainscoting, ductless AC, flush mount light fixture, built-in shelving and storage
- Laundry/Utility Room with built-in open shelving, door to outside, utility sink, octagonal window, front loader washer and dryer
- 1 car garage

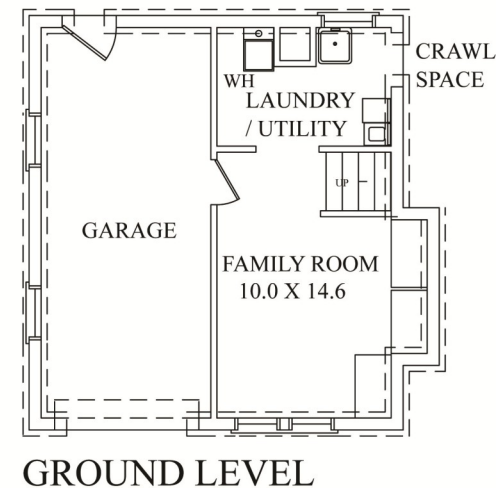
Backyard/Landscaping

- Brick patio
- Private, level, deep yard
- Fenced in yard
- Mature trees and landscaping
- Drainage system for yard (2010)



SECOND LEVEL

FIRST LEVEL



GROUND LEVEL

NOT TO SCALE - This floor plan is provided for illustration purposes only. Room positions and dimensions are approximate and should be independently measured for accuracy.

Additional Features and Upgrades

- New roof and gutters (2010)
- Pella storm door replaced (2009)
- Alarm system installed (2009)
- New hot water heater and furnace (2016)
- New Split system central air (2017)
- New washer and dryer (2015)
- Freshly painted living areas and kitchen (2017) and bedrooms (2015-16)
- Crown molding throughout (2011)
- New interior doors and hardware (2017)
- New garage windows (2016)
- New bathroom and laundry room windows (2016)
- Hardwood floors refinished (2008)
- New flooring in bathroom, new vanity, mirror in bathroom
- Sump pump

Sue Adler
KELLER WILLIAMS
 PREMIER PROPERTIES

Cell: (973) 936-9129
 Office: (973) 376-0033 x101
 admin@sueadler.com
 www.sueadler.com/536Snyder