

# 11 Elmwood Place

Short Hills, New Jersey



*Sue Adler*  
**KELLER WILLIAMS**  
PREMIER PROPERTIES

**sueadler**   
THE #1 KELLER WILLIAMS TEAM IN NEW JERSEY team

Each Keller Williams office is independently owned and operated.





Living in the prestigious Glenwood section of Short Hills is even more appealing in this updated, move-in ready 3 bedroom, 2.5 bathroom Colonial. Inside, hardwood floors flow throughout and natural sunlight is abundant with windows ushering in light on every level. The eat-in kitchen, with gleaming new quartz counter, subway tile backsplash and newly updated cabinets, is a great place to make on the go meals. From the Kitchen, easily flow into the formal Dining Room with chair rail detailing and crown molding, serving as a place to entertain family and guests. The adjoining Living Room extends the entertaining space and features a large picture window. Completing this level is the attached screened porch and convenient Powder Room.

The large Master Bedroom on the second level is its own retreat, with the updated Master Bathroom to relax after a long day. Two additional large bedrooms on the second level and a full Hall Bathroom provide comfort and privacy for your family and guests. And there's more...the lower level is complete with newly carpeted and painted recreation room with plenty of storage. Unpack your bags and enjoy this Glenwood section home on a quiet street, just blocks to Glenwood Elementary School and NYC trains.









# Inside and Out...

## First Level

- Entry Foyer with hardwood floor and coat closet
- Living room with hardwood floor, recessed lighting, crown molding and large picture window
- Dining room with hardwood floor, chair rail detail, crown molding and light fixture
- Eat-in Kitchen with new quartz countertop, subway tile backsplash, updated cabinetry, vinyl tile floor, crown molding, recessed lighting, newer appliances and pantry
- Attached screened porch overlooking rear yard with light fixture
- Powder Room with vinyl tile floor, light fixture and pedestal sink

## Second Level

- Master Bedroom with hardwood floor, ceiling fan with light, 2 closets (1-California closet system)
- Master Bathroom with tile floor, stall shower, sink with vanity and light fixture
- Full Bathroom with tile floor, light fixture and shower over tub
- 2 linen closets
- Bedroom with hardwood floor, ceiling fan with light and large closet
- Bedroom with hardwood floor, ceiling fan with light and large closet

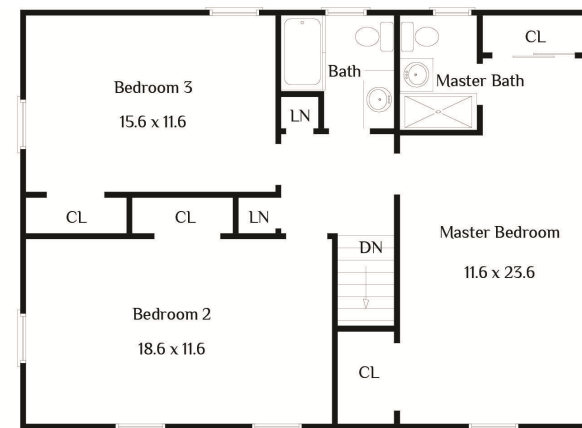
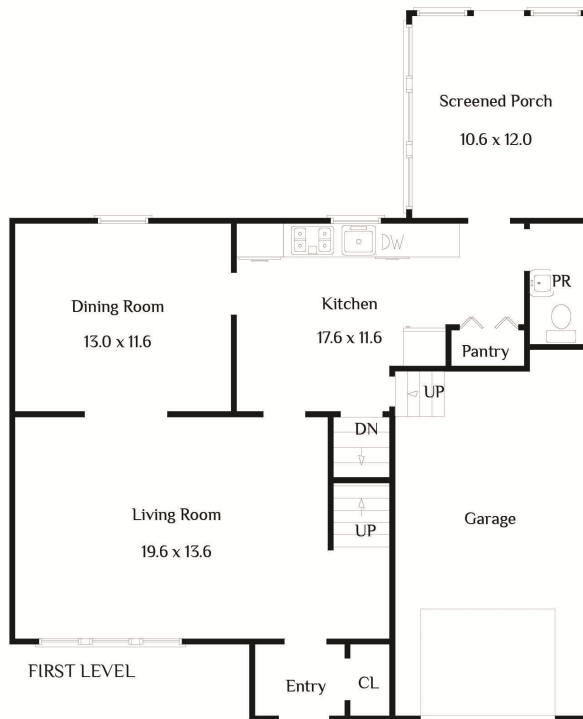
## Lower Level

- Recreation room with new carpet and wood panel detail
- Laundry area, utility room and wine storage area

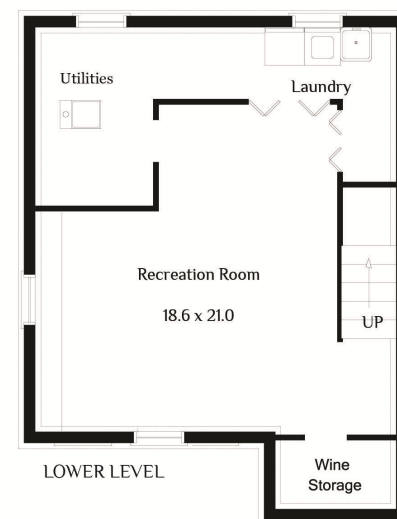
## Additional Features and Upgrades

- Kitchen quartz countertop and backsplash (2016)
- Kitchen cabinets updated (2016)
- Recreation Room painted (2016)
- Dryer (2015)
- Living Room recessed lighting installed (2015)
- Exterior light on timer (2015)
- Garage door opener (2015)
- Nest Learning Thermostat (2014)
- Furnace and condenser (2014)
- Patio design and professional landscaping (2014) and maintained each season

## THE FLOOR PLAN



SECOND LEVEL



LOWER LEVEL

NOT TO SCALE - This floor plan is provided for illustration purposes only.  
Room positions and dimensions are approximate and should be independently measured for accuracy.

## Additional Features and Upgrades continued

- In-ground sprinkler system (2014)
- Recreation Room carpet (2014)
- Kitchen and Powder Room vinyl tile floor (2014)
- Exterior painted (2012)
- Hot water heater (2013)
- Cedar steps from screened porch to yard and thermal back door (2013)
- 1-car attached garage
- 1-zone forced air heat
- 1-zone central air conditioning



Cell: (973) 464-9129  
Office: (973) 376-0033 x101  
Sue@SueAdler.com  
www.sueadler.com/11Elmwood

