

139 Rotary Drive

Summit, New Jersey



Sue Adler
KELLER WILLIAMS
PREMIER PROPERTIES

sueadler 
THE #1 KELLER WILLIAMS TEAM IN NEW JERSEY team

Each Keller Williams office is independently owned and operated.



Welcome to 139 Rotary Drive, a meticulously maintained home in the heart of Summit, NJ. Situated on a picturesque tree-lined street, this move-in ready Colonial has been updated and renovated to perfection both inside and out.

Upon arrival, an attractive brick paver and bluestone walkway leads you to the elegantly columned front covered portico. The front door's decorative side panels welcome you to the Entry Foyer featuring gleaming hardwood floors and a center stairway that provides your first glimpse of the tastefully appointed details that are evident throughout the home. Proceed through a large arched entry into the spacious Living Room where light streams through the large windows and warmth emanates from the wood fireplace with its elegant wooden mantel and marble surround, hardwood floors and rich looking built-in cabinetry. The adjacent formal Dining Room features hardwood floors, crown moldings and two conveniently located built-in storage areas for all your entertaining needs. It's the ideal setting for hosting family and friends.



Continue on to the chef's dream Kitchen where custom cabinetry and top of the line appliances accented by fine granite and a travertine tile backsplash provide the perfect backdrop for the preparation of a gourmet meal or a quick snack. Picture yourself sitting comfortably in the Breakfast Room while gazing out through the double doors to the canopy of trees in the rear yard or relaxing in the adjacent Family Room while watching TV in front of the fire. A conveniently located Powder Room and Laundry Room round out the first level space.



When it's time to retire at the end of the evening, you'll proceed up the staircase to the second level. The Master Suite awaits with extensive closet space including a custom designed walk-in and dressing area as well as a recently renovated en suite bath featuring spectacular marble tile, quartzite topped vanity with double sinks and large marble shower. Three additional bedrooms with hardwood floors, recessed lighting, custom closets and plenty of light streaming through their large windows provide an abundance of living space for family and guests. A full Hallway Bath, large linen closets and a pull-down staircase providing access to a large attic storage area complete the second level.



And there's more...the finished basement level includes a Mud Room area with access to the garage, a bright and cheery Recreation Room that's perfect for all kinds of family fun, plenty of storage space and an additional Powder Room.



Outside, the large raised Deck overlooks expansive park-like grounds completely surrounded by an attractive wrought iron fence. Picture the space with multiple tables and lounge chairs, appetizing smells coming from a barbecue grill and room for all your outdoor hobbies.

Loving care and thoughtful updates have kept this fine home fresh and modern. With easy access to NYC transportation, top-notch schools and world class shopping and restaurants, 139 Rotary Drive is the perfect place to call home.



Inside and Out...

First Level

- Entrance Hall with Hardwood floors, crown moldings & wainscoting, coat closet and light fixture
- Living Room with hardwood floors, large wood-burning fireplace with wood mantle, marble surround and slate hearth, crown moldings, built-in bookcases, recessed lighting and access to Dining Room
- Dining Room with entry from Living Room and access to Kitchen, wood floors, crown molding and wainscoting, 2 storage closets, chandelier and large windows
- Family Room with wood floors and bay window, gas fireplace with wood mantle and brick surround, built-in shelves/cabinets, recessed lighting, crown molding,
- Kitchen with granite counters and travertine backsplash, center island, Breakfast Room and built-in desk area, high-end appliances including built-in wine cooler and Viking microwave, Bosch dishwasher, Viking cook top, Viking double wall oven, Breakfast Room, recessed lighting, large pantry; sliders to rear deck and access to Family Room
- Powder Room with granite top vanity and marble floors, crown molding and decorative shuttered window
- Laundry Room with ceramic tile, cabinets and broom closet, washer/dryer and utility sink
- Rear deck with lighting, stairs leading to flat, fenced in yard

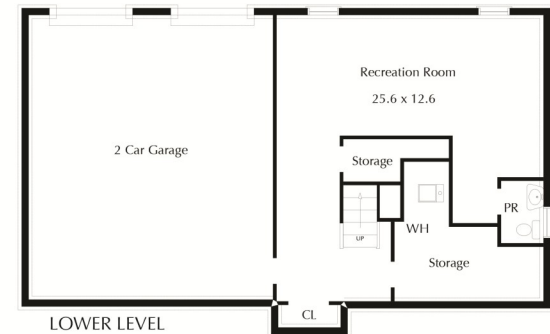
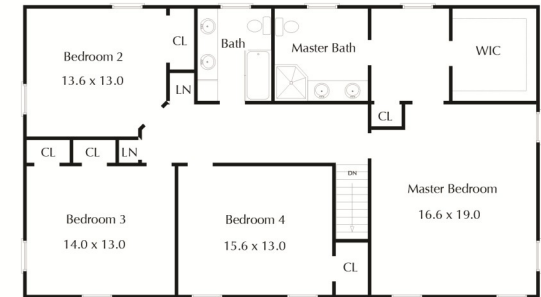
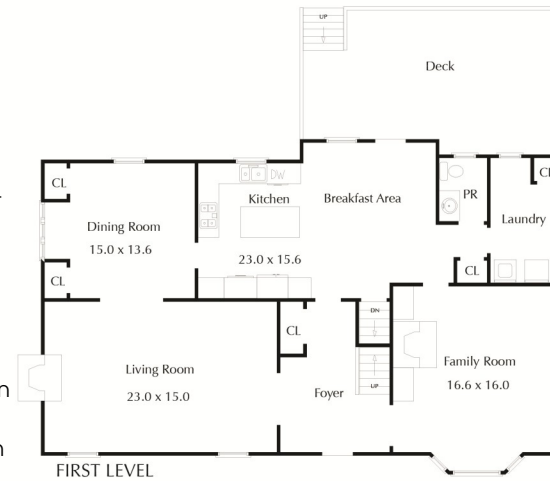
Second Level

- Hallway with hardwood floors, light fixtures and chair rail, 2 linen closets and pull down steps to large attic storage area
- Master Bedroom Suite with walk-in closets with custom shelving, additional closet with shelving, crown molding, hardwood floors, dressing area with decorative shuttered window
- Master Bath with marble tile floor, quartzite top vanity with double sinks, stall shower with marble tile
- Bedroom #2 features wood floors, chair rail and crown molding, walk-in closet with built-in shelving, recessed lighting
- Bedroom #3 features hardwood floors, crown molding and large windows; closet with built-in shelving and recessed lighting
- Bedroom #4 with hardwood floors, recessed lighting, chair rail and crown molding, closet with built-in shelving and 2 large windows
- Hall Bath with shower over tub, travertine tile floor and backsplash with decorative accents, double sink vanity with Corian top, recessed lighting, built-in storage cabinet

Lower Level

- Finished basement with ceramic tile and carpet, Recreation Room with windows to rear yard, recessed lighting, Mudroom area with access to oversized garage, large storage closets and storage room under stairs, utility room
- Powder Room with ceramic tile, pedestal sink

THE FLOOR PLAN



NOT TO SCALE - This floor plan is provided for illustration purposes only. Room positions and dimensions are approximate and should be independently measured for accuracy.

Additional Features and Updates

- Family Room renovation (2009)
- Master Bath renovation (2013)
- New Hot water heater (2011)
- Outdoor sprinkler system (2013)
- Recessed lighting throughout home (2011)
- Professional landscaping (2013)
- Interior and exterior house painting (2014)
- Deck refinished (2013)
- Security/Fire alarm system
- Oversized 2 car garage with electric doors



Cell: (973) 975-0197
Office: (973) 376-0033 x101
Sue@sueadler.com
www.sueadler.com/139rotary

Sue Adler
KELLER WILLIAMS
PREMIER PROPERTIES