

50 Madison Avenue

New Providence, New Jersey



Cell: (973) 975-0197
Office: (973) 376-0033 x101
Sue@sueadler.com
www.sueadler.com/50madison

Sue Adler
KELLER WILLIAMS
PREMIER PROPERTIES



Each Keller Williams office is independently owned and operated.

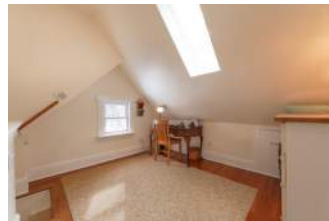


A New Providence masterpiece is on display. This early Craftsman side hall Colonial greets you with impressive curb appeal and landscaping, and has been restored to its original glory with stained glass pieces, period correct hardware and original doors, refinished hardwood floors and American chestnut paneling and trim-making this home truly one-of-a-kind.

As you enter the home from the restored lemonade porch and into the entry foyer, hardwood floors flow underfoot and into the Living Room where entertaining guest will be handled with ease and hosting formal dinner parties in the adjacent Dining Room with craftsmen style wood paneling, beam ceiling and decorative fireplace create a warm and inviting space.

The newly remodeled kitchen is just steps away and features granite counter and backsplash, pendant lighting and stainless steel professional grade appliances-a true chef's delight. Sliding glass doors lead out to the wood deck overlooking the expansive backyard and the updated powder room and coat closet complete this level.





When the evening draws to a close, the second level offers everyone their own personal retreat in one of four bedrooms and the full hall bathroom with marble tile floor aptly services these bedrooms through the morning rush.

The third level is dedicated to the Master Suite with Brazilian hardwood floors and features a sitting area, four skylights and spa-like Master Bath. After a long day of work, enjoy relaxing in the Jacuzzi tub or in the walk-in shower with additional spray jets and Italian porcelain, marble and quartz tile backsplash and floor.

And there's more...the lower level has been finished to include a recreation room for indoor play and hobbies and a laundry area with cabinets and built-in shelving.

It is not often that a home of this quality comes along. With little to do except bring your furnishings and personal touch, this is a fabulous opportunity to enjoy all New Providence has to offer in complete comfort and style with the added benefit of being a part of a Blue Ribbon School System, blocks to train direct to NYC, schools and downtown shopping.

Inside and Out...

First Level

- Living Room with hardwood floors, crown molding, original early Craftsman stained glass window and original floor-to-ceiling chestnut pocket doors
- Dining Room with hardwood floors, early craftsmen original American chestnut wood paneling, beam ceiling and wood fireplace
- Kitchen with (engineered wood floor), granite counter and backsplash, pendant lighting, farm sink, stainless steel appliances including duel fuel range and double ovens, exhaust hood, dishwasher and refrigerator. Sliding glass door out to wood deck that overlooks the backyard
- Powder room with pedestal sink

Second Level

- Bedroom with hardwood floor, two closets with custom shelving, crown molding and ceiling fan
- Bedroom with hardwood floor, bay window and walk-in closet, ceiling fan
- Bedroom with hardwood floor, built-in closet (access to bedroom 2)
- Bedroom with hardwood floor and closet
- Bathroom with marble tile floor and shower over jetted tub

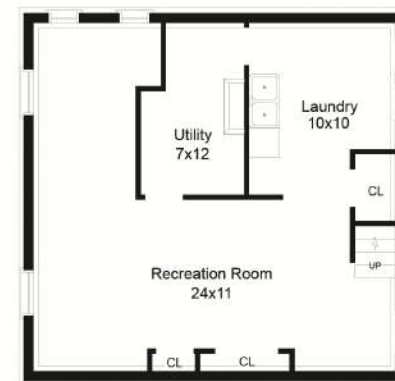
Third Level

- Master Bedroom with Brazilian hardwood floor, sitting area, skylights and built-in closet
- Master Bathroom with Italian porcelain, quartz and marble tile floor and backsplash Jacuzzi tub, walk-in stall shower with additional spray jets and vanity

Lower Level

- Recreation room with tile floor
- Laundry area with sink and built-in cabinets and shelving
- Storage

THE FLOOR PLAN



NOT TO SCALE - This floor plan is provided for illustration purposes only. Room positions and dimensions are approximate and should be independently measured for accuracy.

Additional Features and Updates

- Additional Features and Updates
- Kitchen remodeled (2013)
- Storm door and (windows) (2013)
- New over-sized garage with loft (2012)
- Chimney Lined (2010)
- Hot Water Heater (2009)
- Newer Roof
- Forced Air and Central Air (2006/07)
- Master Bedroom Suite with skylights (2007)
- Fresh paint (2007)
- Porch restored (2006)
- Added fieldstone around foundation and widened front stairs (2006)
- All new windows
- All newer appliances
- 7 pieces of original stained glass
- Original American chestnut paneling, trim and beamed ceiling
- Original doors with period hardware
- Period radiators

