



Sue Adler

KELLER WILLIAMS
PREMIER PROPERTIES

Cell: (973) 975-0197
Office: (973) 376-0033 x101
Sue@sueadler.com
www.sueadler.com/15hickory

15 Hickory Place
New Providence

sueadler 
THE #1 KELLER WILLIAMS TEAM IN NEW JERSEY **team**



Picture perfect, this spacious split level rests .38 acres of beautifully landscaped property. Loaded with curb appeal, attention to detail is evident from the moment this fine home comes into view. The open concept floor plan provides spaces equally suited to entertaining and comfortable daily living. As sunlight pours into nearly every corner, there is an atmosphere that brings a sense of cheer and well-being. A wonderful place to call home and one you will want to showcase often.



Crossing the threshold, you are greeted by an entry foyer where gleaming hardwood floors continue into the adjoining rooms. The open living and dining rooms are clearly designed for anyone who love to entertain and allows your guests to mingle freely in a wonderfully engaging environment.

The updated kitchen offers the busy cook loads of storage and workspace. Quality appliances are arranged for easy access, while recessed lighting effectively illuminates the work area. Sliders out to the wood deck allow you to enjoy dining al fresco, while surrounded by tall shade trees, manicured shrubbery and well established lawns.





The ground level offers an open family room with powder room and access to the two car garage. Stairs lead down to the lower level media room, storage room and laundry room.

Situated on the second level are three bedrooms and two full baths. The master bedroom includes a full master bath and walk-in closet. The hall bath is well equipped and ready to service the remaining two bedrooms through the morning rush. And there's more....the third level has been finished into a bedroom.

Completing your tour of this home, you realize it has been easy to imagine your furnishings and artwork placed here and there. This is a wonderful opportunity to take full advantage of all New Providence has to offer in comfort and style.

Inside and Out...

First Level

- Living room with crown molding, gas fireplace
- Dining room with crown molding, chair rail detail and picture window
- Kitchen with eating area, ceramic composite flooring, granite counters, tumbled tile backsplash, stainless steel appliances, double ovens, pot filler, recessed lighting and sliders to rear deck

Ground Level

- Family room with carpet, built-ins and recessed lighting
- Office with carpet, built-ins and closet
- Powder room (new) with linoleum tile, vanity and built-in shelving

Access to 2-car garage with extra storage and automatic doors

Lower Level

- Media room with built-ins
- Storage room with Coleman built-ins and cedar closet
- Laundry room with storage and built-ins

Second Level

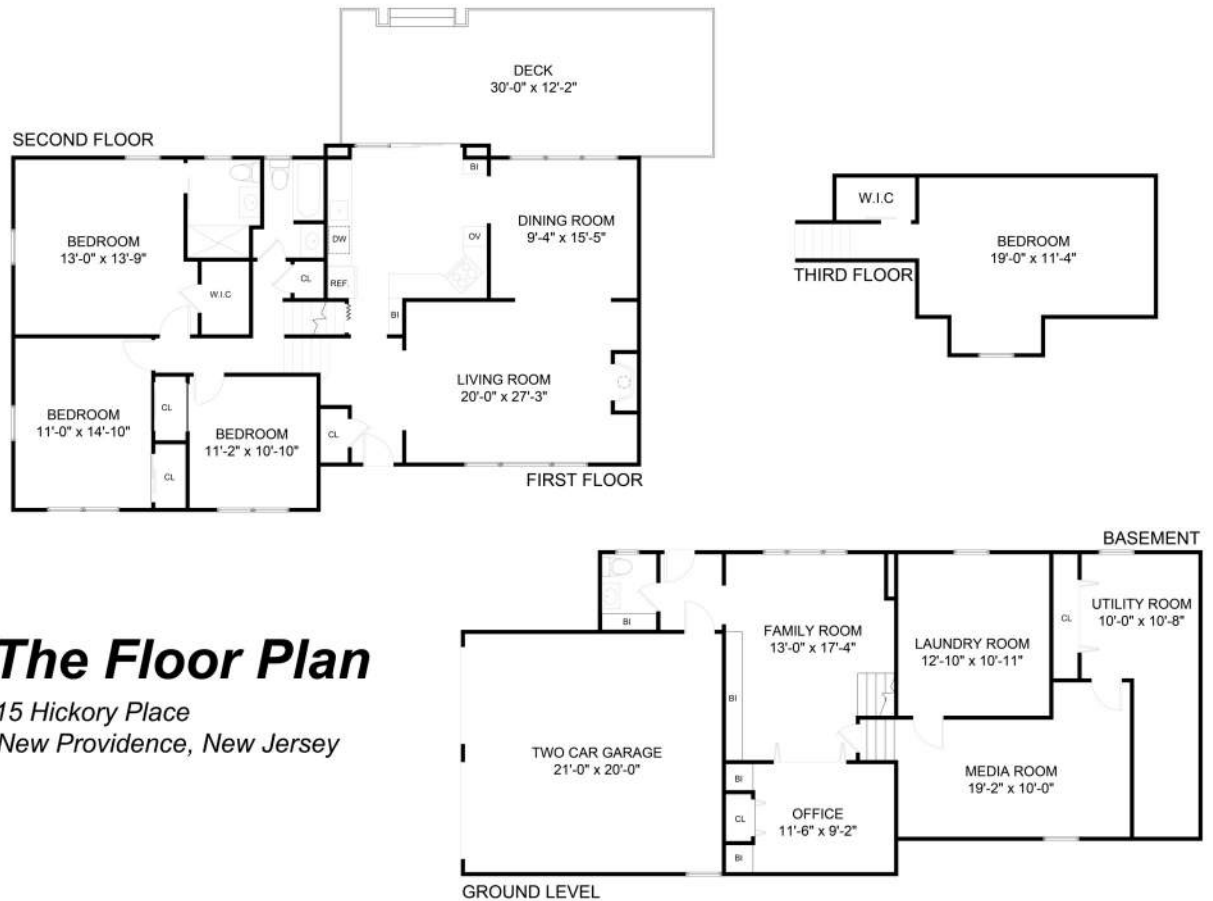
- Bedroom with chair rail detail and closet
- Bedroom with closet
- Master bedroom with crown molding, ceiling fan and walk-in closet
- Master bathroom (new) with tile flooring and radiant heat and stall shower
- Hall bathroom (new) with tile floor, shower over tub with subway tile and mosaic tile detail trim pieces, vanity

Third Level

- Bedroom with closet

Property Particulars

Bedrooms: 4
Bathrooms: 2.5
Acres: .386
Taxes: 13,960



The Floor Plan

15 Hickory Place
New Providence, New Jersey

NOT TO SCALE - This floor plan is provided for illustration purposes only.
Room positions and dimensions are approximate and should be independently measured for accuracy.

Additional Features

- New Hot Water Heater
- New powder room, hall bathroom and Master bathroom
- New windows
- Rear deck with lighting
- Large patio
- Storage shed
- New driveway with paver saddle
- Whole house fan
- Sprinkler system

