



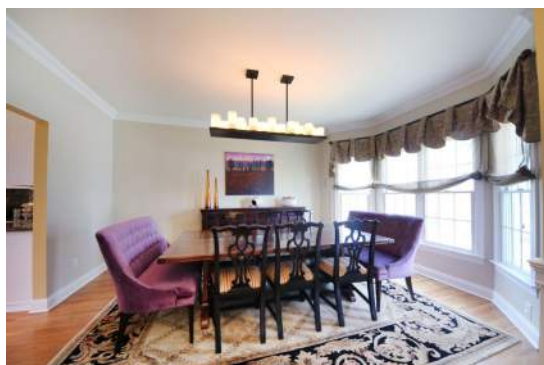
Sue Adler
KELLER WILLIAMS
PREMIER PROPERTIES

Cell: (973) 975-0197
Office: (973) 376-0033 x101
Sue@sueadler.com
www.sueadler.com/12oshea

12 O'Shea Lane

SUMMIT | NEW JERSEY

sueadler 
THE #1 KELLER WILLIAMS TEAM IN NEW JERSEY **team**



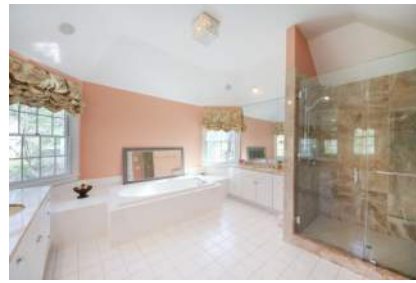
Inside this quality home, spacious rooms flow effortlessly along polished hardwood floors with artful details on display at every turn. Inviting colors, bathed in natural sunlight, spread throughout three finished levels. With ample storage, abundant windows and an easy flow, there's room to spread out, relax and entertain both inside and out.

THE FIRST LEVEL

- Double story entry foyer features hardwood floors, chandelier and chair rail wood panel detailing.
- Living room with hardwood floors, bay window and crown molding.
- Dining room with hardwood floors, chandelier, bay window and crown molding.
- Kitchen with granite counters, center island, breakfast area with bay window and gas fireplace.
- Powder room with hardwood floors and pedestal sink.
- Coat closet.
- Bedroom with carpeting, crown molding, closet, en-suite bathroom with tile floor and shower over tub.

THE SECOND LEVEL

- Bedroom with carpet, closet and plenty of natural sunlight.
- Bedroom with hardwood floors, vaulted ceiling, 2 closets.
- Bedroom with wall to wall carpet and closet.
- Master Bedroom with parquet floors, tray ceiling, ceiling fan and 2 walk-in closets.
- Master bathroom with tile floor, marble tile stall shower, two vanities with marble top, soaking tub and linen closet.
- Full hall bathroom with tile floor, shower over tub, skylight and linen closet
- Laundry room



THE LOWER LEVEL

- Recreation area with built-ins, storage.
- Exercise room.
- Theatre/Media room.
- Powder room with tile floor and pedestal sink.
- Plenty of storage.



AND FINALLY...

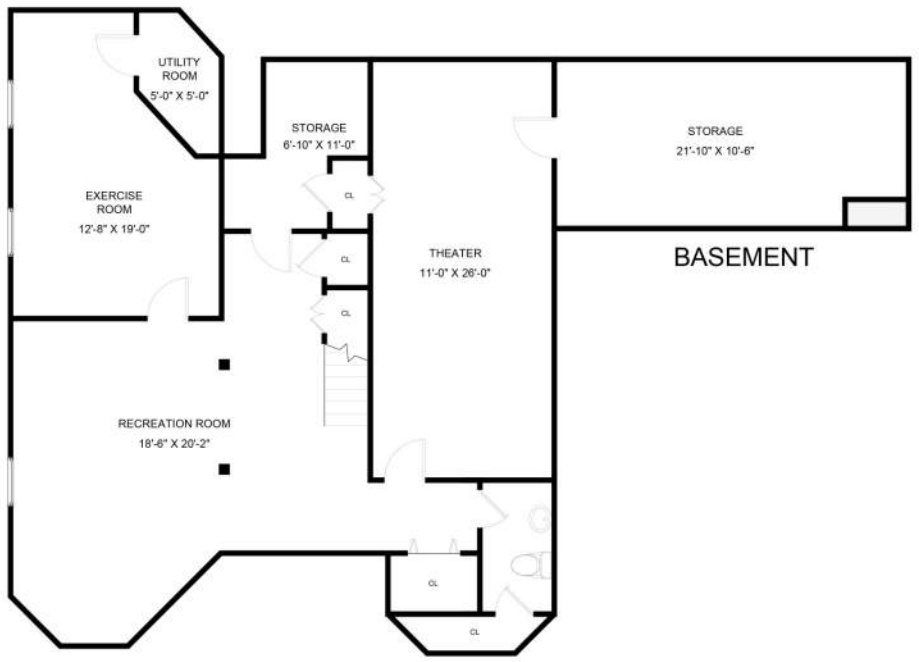
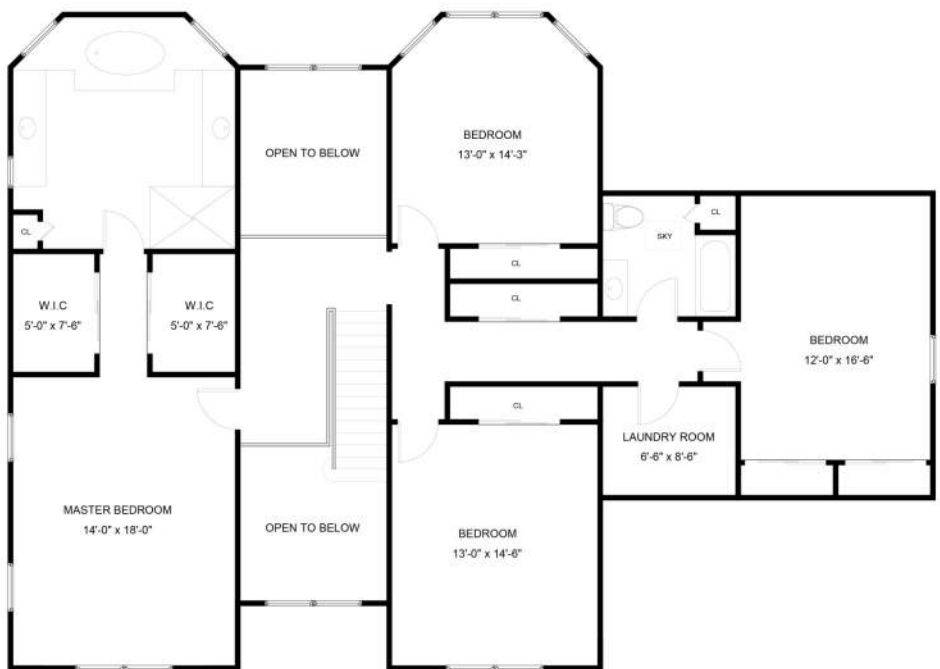
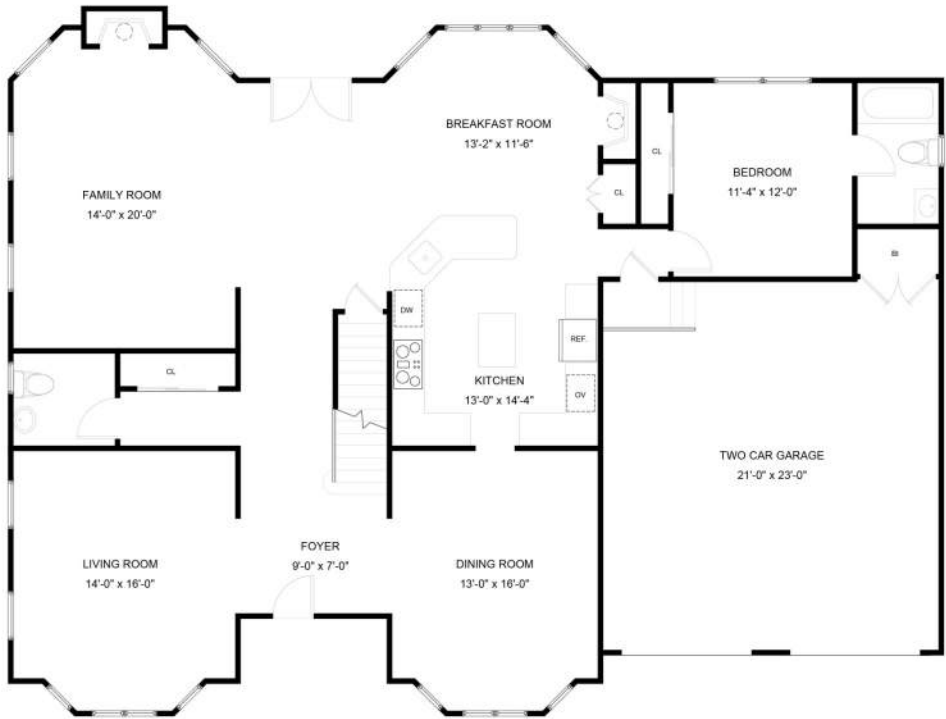
Additional Features and Improvements

- Two tiered patio with Pergola
- Hot tub
- Swing set and playhouse
- House stereo (Family room, Dining room, Master bedroom and bathroom and outside).
- Gutter guards

Improvements

- (2) A/C units (2011)
- New Furnace

The Floor Plan



Property Particulars
Bedrooms: 5
Bathrooms: 3 full and 2 half
Acres: .261
Taxes: 19,831