

314 Alexandria Way

Basking Ridge, New Jersey



Sue Adler
KELLER WILLIAMS
PREMIER PROPERTIES

sueadler  team

Each Keller Williams office is independently owned and operated.



Light, bright and inviting, this move-in ready Colonial in Spring Ridge combines classic charm together with modern amenities into one marvelous home. Loving care and thoughtful updates have kept this fine home fresh and modern. And with its location-next to parks and recreation and just a short drive to schools and NYC commuter trains; this home truly has it all.

Inside, spacious rooms flow effortlessly from one inviting area to the next. Hardwood floors flow underfoot and light pours through skylights and windows on every level providing a sense of warmth and openness. The first level offers space to entertain friends and loved ones in complete style and ease. The family room with vaulted ceiling and wood fireplace is great place to kick back and relax after a long day of work. The new updated kitchen is any cooks' dream with granite counter tops, stainless steel appliances and plenty of space for storing all your kitchen gadgets in two pantries. Flowing right in from the kitchen is the formal dining room waiting to host your next dinner party in complete style and for warmer spring days enjoy dining al fresco on the deck. Completing this level is access to the one-car garage, laundry room and powder room.





On the second level 3 spacious bedrooms allow for a restful night sleep for all. A full hall bathroom services two bedrooms while the Master bedroom is its own paradise with walk-in closet and a full updated master bath.

The finished lower level with brand new carpeting is home to a recreation room, office with walk-in closet and plenty of storage.

Spring Ridge offers residents pool, tennis courts, playground and clubhouse access. With little to do except bring your furnishings, this home brings a unique opportunity to take full advantage of all Basking Ridge offers in complete comfort and style.

Inside and Out...

First Level

- Entry with tile floor and coat closet
- Family room with hardwood floor, vaulted ceiling with skylights, wood fireplace with slate hearth and surround
- Dining room with hardwood floor and recessed lights
- Kitchen with hardwood floor, granite counters, soft close cabinetry, subway tile backsplash, 2 pantry closets (one-walk-in), stainless steel appliances including double ovens, pendant lighting and recessed lighting
- Laundry room with tile floor and closet
- Powder room with tile floor
- One-car attached garage

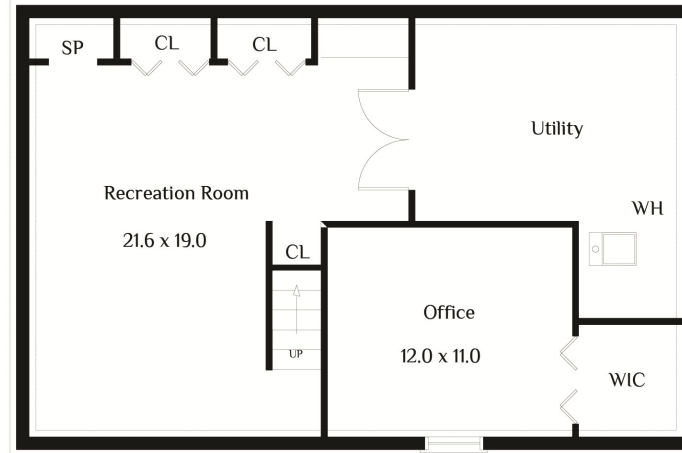
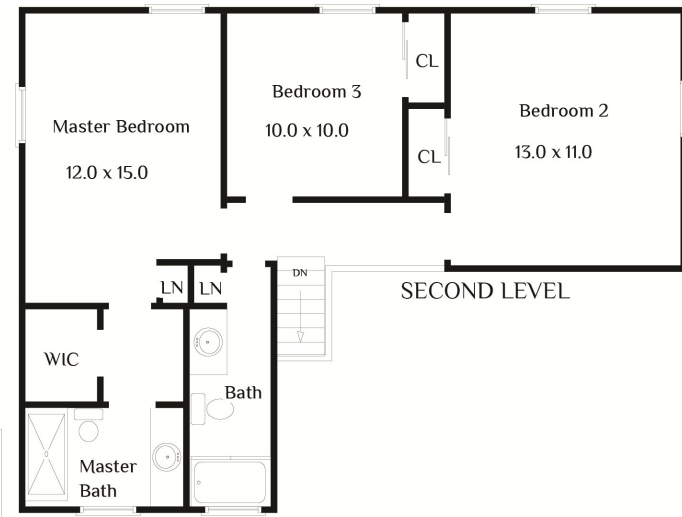
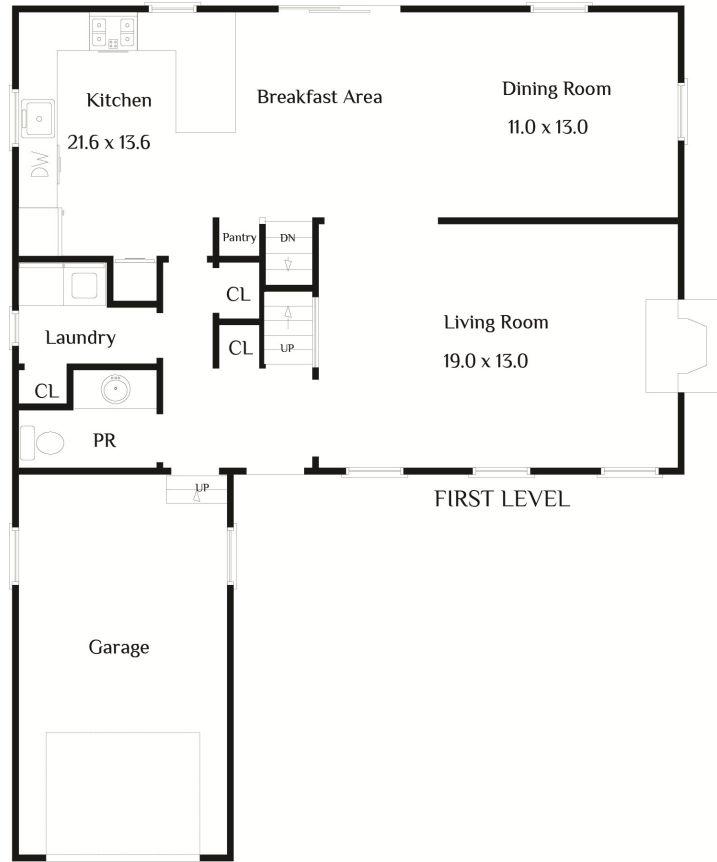
Second Level

- Master bedroom with carpet, walk-in closet with custom shelving, linen closet and ceiling fan
- Master bathroom with tile floor, stall shower and tile backsplash
- Bedroom with carpet, closet with custom shelving and ceiling fan
- Bathroom with tile floor, shower over tub and linen closet
- Bedroom with carpet, closet with custom shelving and ceiling fan

Lower Level

- Recreation room with new carpet, recessed lighting and storage closets
- Office with carpet and walk-in closet
- Utility/Storage room

THE FLOOR PLAN



NOT TO SCALE - This floor plan is provided for illustration purposes only. Room positions and dimensions are approximate and should be independently measured for accuracy.

Additional Features and Updates (3-5 years)

- New Kitchen
- All new appliances in kitchen
- New carpet in basement
- New sump pump with battery back-up

- New Hot water heater
- Deck
- Community offers pool, playground, tennis courts and clubhouse
- Quarterly Community Fee: \$117



Sue Adler
KELLER WILLIAMS
 PREMIER PROPERTIES

Cell: (973) 975-0197
 Office: (973) 376-0033 x101
 Sue@sueadler.com
 www.sueadler.com/314alexandriaway

