



Sue Adler
KELLER WILLIAMS
PREMIER PROPERTIES



Cell: (973) 975-0197
Office: (973) 376-0033 x101
Sue@sueadler.com
www.SueAdler.com/17claremont

17 Claremont Drive
SHORT HILLS | NEW JERSEY

sueadler 
team

Each Keller Williams office is independently owned and operated.



Classic features and timeless appeal come together in this Glenwood Colonial



With its charm, character and sought after location in the Glenwood section of Short Hills, this home sets itself apart. Inside, hardwood floors flow throughout and natural sunlight is abundant with windows ushering in light on every level. The eat in kitchen is a great place to make quick on the go meals and is perfectly placed to flow into the formal dining room where chair rail detailing, crown molding and chandelier serve as a place to entertain family and guests. The adjoining living room extends the entertaining space and features wood burning fireplace, custom built-in cabinets and large bay window.

The Master bedroom on the second level is its own retreat, with its own bathroom to relax in after a long day. Two additional bedrooms on the second level and updated hall bathroom provide comfort and privacy for your family and guest. Unpack your bags and enjoy all this Glenwood section home has to offer!

THE FIRST LEVEL

Entire first and second level with hardwood floors except sunroom

- Mudroom with two coat closets
- Entry hall with coat closet and crown molding
- Powder room with tile floor and pedestal sink
- Eat-in kitchen with tile floor
- Dining room with chair rail detailing and crown molding
- Living room with wood fireplace-marble hearth and wood surround with intricate detailing, bay window, built-ins and crown molding
- Sunroom with carpet, bead board ceiling, ceiling fan and access to backyard



SECOND LEVEL

- Bedroom with closet
- Deep hall closet
- Hall Bathroom with tile floor, pedestal sink, linen closet and shower over Jacuzzi tub
- Bedroom with closet
- Master Bedroom with closet
- Master Bathroom with tile floor, pedestal sink and stall shower

THIRD LEVEL

- Unfinished walk-up attic

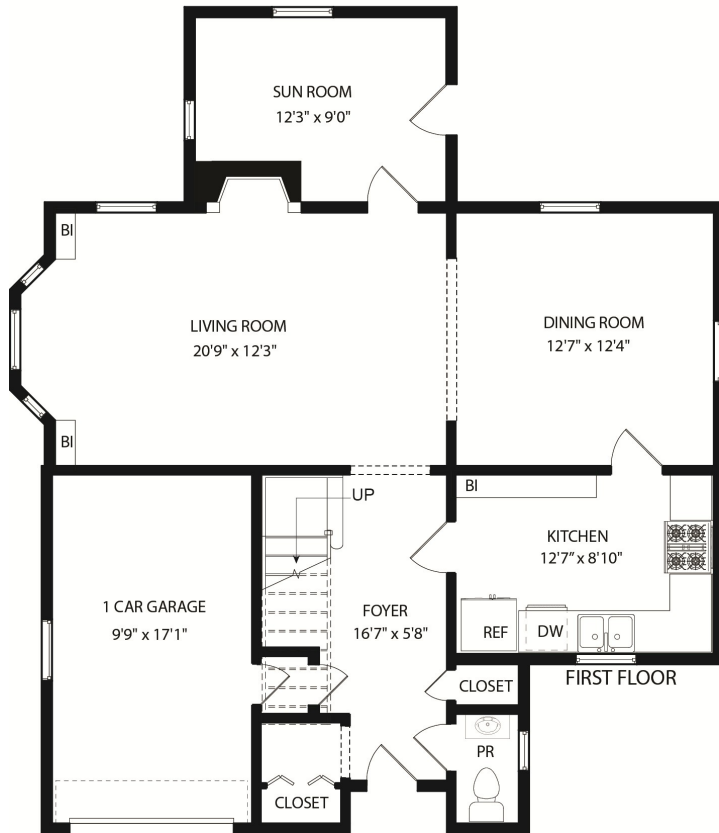
LOWER LEVEL

- Large unfinished space with laundry and utility area
-

Short Hills is the prized section of Millburn Township, where winding streets are populated with a variety of distinctive homes. Located only a few blocks from Millburn's downtown shopping district, this quiet tree-lined street enjoys a peaceful setting. From here, residents have easy access to major highways, business centers and Newark / Liberty International Airport. Recreation, top-rated schools and commuter trains to NYC are all nearby. With a lovely setting, gorgeous interior spaces and a prime location, this exceptional colonial provides a unique opportunity to take full advantage of all Short Hills has to offer in complete comfort and style.



The Floor Plan



ADDITIONAL FEATURES/UPDATES

- Retiled floors in kitchen and bathrooms
- Replaced most windows on second level
- Flat, level rear yard
- Attached 1 car garage
- Large unfinished basement

PROPERTY PARTICULARS

Built: 1939
 Lot Size: 60 x 100
 Taxes: 15,083

Not to scale. This floor plan is provided for illustration purposes only. Room positions and dimensions are approximate and subject to errors and omissions.

