

19 Evergreen Terrace

Millburn, New Jersey



Sue Adler
KELLER WILLIAMS
PREMIER PROPERTIES

sueadler 
THE #1 KELLER WILLIAMS TEAM IN NEW JERSEY team

Each Keller Williams office is independently owned and operated.



Welcome to 19 Evergreen Terrace! This immaculate, updated 4 bedroom, 2 and a half bath ranch located in the sought-after Wyoming section of Millburn hits all the right notes. Freshly painted inside and out, this home is truly move-in ready and waiting for you to call it home! Get ready to enjoy its many upgraded features as well as its access top notch schools and location within walking distance to downtown shopping & restaurants and Midtown Direct trains.

A handsome bluestone walkway and professionally landscaped property are the perfect introduction to this impeccable home. Step inside the welcoming front door to find the Entry Foyer featuring striking marble floors and generous coat closet. Continue to the left to enter the sun drenched Living Room/Dining Room combo featuring a large corner window, warm hued hardwood floors and a classic fireplace with an elegant wood mantel framing the brick surround. This spacious setting provides the perfect space for entertaining family and friends. Gourmet meals are a snap when prepared in the home's picture perfect renovated Kitchen featuring crisp white cabinetry, new stainless steel appliances, granite countertops and a peninsula breakfast bar. The Kitchen flows seamlessly into the neighboring Family Room highlighted by windows on three sides, hardwood floors and a charming gas fireplace that provides character and warmth throughout the year. The room has access to the gravel patio just outside - perfect for al fresco dining on summer nights - and a spacious and private back and side yard ideal for child's play and all your favorite outdoor hobbies.



When it's time to retire for the evening, four bedrooms and a renovated Full Bathroom are found just down the hall. Luxury abounds in the private and spacious Master Bedroom featuring hardwood floors, dual closets (one a walk-in fully outfitted with custom shelving) and large windows that bathe the room in natural sunlight. The Full Bathroom just outside has been chicly renovated and features a gorgeous granite topped vanity, tiled wainscoting and a striking window with glass block accents for privacy. Three additional Bedrooms featuring hardwood floors and one with a convenient en-suite half Bathroom rounds out the level.

And there's more...The Lower Level will provide endless hours of enjoyment and additional living space. Here you'll find a spacious tiled Recreation Room with a chalkboard wall that's just great for child creativity or a home organization tool. Around the corner is a flexible Bonus Room with wood laminate floors and plenty of closet space that's ideal for use as an exercise room, home office, artist studio and more... the choice is yours to use as you see fit! Just outside a conveniently located Laundry Area and an updated Full Bath round out the lower level space.

Upon viewing, you'll undoubtedly see how much the charming home at 19 Evergreen Terrace has to offer. Set in a fabulous family neighborhood just blocks from downtown Millburn shopping and restaurants, this home is an exceptional value and will not last!

Inside and Out...

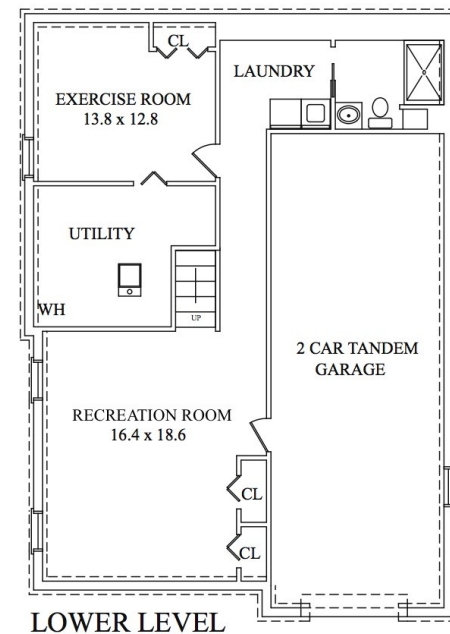
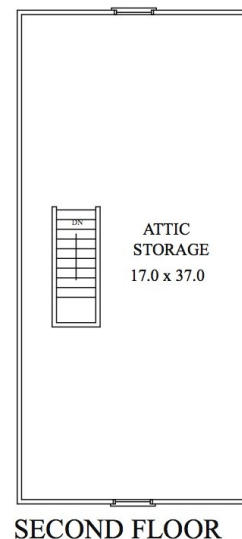
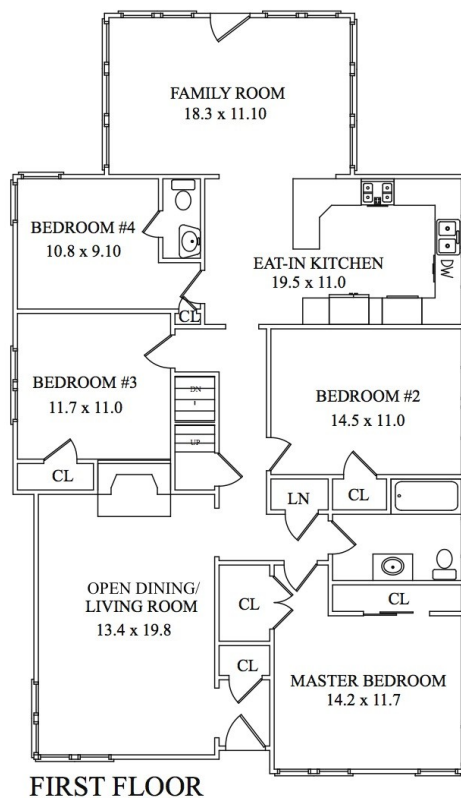
First Level

- Entry Foyer with marble tile floor, coat closet, light fixture, wood door with glass accents; archway to Living Room
- Living Room with hardwood floors, crown molding, large corner window, wood burning fireplace with wood mantel and brick surround; archway to hallway leading to bedrooms and Kitchen
- Master Bedroom with hardwood floors, 2 large banks of windows, deep sliding double door closets with mirrored fronts and wire shelving, walk-in closet with custom shelving and drawers, ceiling fan with light
- Bedroom #2 with hardwood floors, large window with bamboo shade, ceiling fan with light, large closet with wire shelving
- Bedroom #3 with hardwood floors, pendant light fixture, large closet with shelving, windows with shades, chair rail
- Bedroom #4 with hardwood floors, corner window with shades, closet with shelves, ceiling fan with light, en suite half bath with ceramic tile floor, pedestal sink, subway tile wainscoting, light fixture, mirrored medicine cabinet, built-in display niche
- Full Hallway Bath with ceramic tile floor, tiled wainscoting, vanity with granite top, storage below and mirrored medicine cabinets and light fixture above, ceiling fixture, window with glass block accents for privacy, shower over tub with tiled walls
- Kitchen with ceramic tile floor, crisp white custom cabinetry, subway tile backsplash, high end stainless steel appliances including, Whirlpool refrigerator/freezer, Viking 4-burner cooktop, GE built-in microwave, GE dishwasher, stainless double sink with window and glass block accent tiles above, corner display shelving, peninsula breakfast bar with 2 pendant lights above, 2 ceiling fixtures; open to Family Room
- Family Room with hardwood floors, windows on three sides with shades, gas fireplace, angled ceiling, ceiling fan with light; doorway to backyard

Lower Level

- French door entry to carpeted stairway
- Recreation Room with ceramic tile floor, 4 sconces, ceiling fixture, chalk board wall, wall mounted speakers, 2 grade level windows, shelving and coat hooks; access to 2-car garage
- Exercise/Bonus Room (suitable for office, studio, exercise room or guests) with baseboard heat, closet with shelving, recessed lighting, wood laminate floor, grade level window, access to utility area
- Laundry Area with ceramic tile floor, LG front load washer and dryer with storage cabinets above, ceiling fixture
- Full Bath with tile floor, vanity with mirror and light fixture above, built-in shelving niche, glass door shower with tiled walls and grade level window, baseboard heater, recessed lighting

THE FLOOR PLAN 19 Evergreen Terrace Millburn, New Jersey



NOT TO SCALE - This floor plan is provided for illustration purposes only.
Room positions and dimensions are approximate and should be independently measured for accuracy.

Additional Features and Upgrades

- 2-car attached garage with electric door
- Energy efficient radiant heat with supplemental baseboard heaters
- Central air conditioning
- Thermal windows and doors
- French drains and sump pump
- New hot water heater installed (2014)
- Electrical updated (2016)
- Updated Kitchen with new refrigerator (2016), new microwave (2017), new backsplash (2017)
- Lower level bath renovation (2014)
- Full interior painting in neutral colors (2017)
- Exterior painting guaranteed for 8 years (2017)
- Professional landscaped property includes new gravel patio, foundation shrubbery and privacy hedge (installed July 2017)
- New custom closet in Master Bedroom (2015)
- New washer and dryer installed (2013)
- Attic space with walk-up access (with potential for flexible use)

Sue Adler
KELLER WILLIAMS
PREMIER PROPERTIES

Cell: (973) 936-9129
Office: (973) 376-0033 x101
Sue@sueadler.com
www.sueadler.com/19Evergreen