

# 37 Seminole Way

Short Hills, New Jersey



*Sue Adler*  
**KELLER WILLIAMS**  
PREMIER PROPERTIES

**sueadler**   
THE #1 KELLER WILLIAMS TEAM IN NEW JERSEY team

Each Keller Williams office is independently owned and operated.





Drive up to 37 Seminole Way and you know you have arrived somewhere spectacular. Meticulously landscaped gardens, crisp white shutters and a regal brick exterior all contribute to this home's exceptional curb appeal. This pristine and stately 4 Bedroom, 2 Full and 2 Half Bath home, in the heart of the Deerfield section of Short Hills, simply cannot be missed!

Walk up the elegant bluestone walkway flanked by stately stone walls and enter through the classic wood door with leaded glass sidelites. Gracefulness abounds in the deep, warm and welcoming Entry Foyer complete with hardwood floors, Coat Closet and an elegant staircase leading to the second level. The spacious and bright Living Room is an entertainer's dream with its exceptional statement fireplace with rustic whitewashed wood mantel, plantation shutters and gleaming hardwood floors. Walk down the hallway with its stunning stone accent wall into the formal Dining Room. Fireside dinner parties are divine in the spacious Formal Dining Room with charming French doors leading to the Family Room beyond. The Dining Room connects easily to the impressive Gourmet Chef's Kitchen that will satisfy any cook's desire. White washed wood custom cabinetry with gorgeous custom island with seating for 5, 2 Bar Areas, granite countertops, top of the line appliances and breathtaking views of the backyard make the Kitchen extraordinary. Storage abounds with a chic pantry flanked by barn doors. Watching children in the yard is a snap from the Kitchen with abundant windows, including at the backslash level. Prepare to be amazed by the open and airy Family Room flowing easily from the Kitchen area. You are sure to be enchanted by the vaulted ceiling with rustic wood beams, hardwood floors, custom bookcase, stunning picture window and skylights all bringing in the light and greenery from the garden beyond. Curl up with a book in the elegant Library/Office featuring floor to ceiling custom built-ins and its own cozy fireplace. A spacious combination Laundry/Powder Room with concealed washer dryer storage rounds out the first level living space.







Ready to retire for the evening? Enjoy complete privacy in the 1<sup>st</sup> Level Master Suite. Custom built-ins, hardwood floors and dual walk-in closets make this the perfect retreat. The spa-like Master Bath, complete with marble tile, enormous vanity and built-in Jacuzzi tub, tastefully completes this space. For three additional spacious Bedrooms, walk up the elegant curved staircase to the open and roomy second floor landing. A walk-in closet and custom built-ins make the landing the perfect hangout spot for teenagers or a kids study area. The roomy and bright Bedrooms feature recently finished hardwood floors and huge closets (1 walk in). The Bedrooms share the impeccably renovated Full Hall Bathroom complete with charming bead board wainscoting, penny tile flooring and subway tile.

And that's not all! The large Lower Level provides plenty of additional living space with a sizable, carpeted and freshly painted Recreation Room/Children's Playroom complete with a bar area perfect for movie watching or family game night. Off of the Recreation Room is a spacious Mudroom Area with a large coat closet and easy access to the 2 car garage. And don't miss the carpenter's workshop with a large worktable and plenty of storage for all of your tools. A tastefully renovated Powder Room perfectly rounds out this space.

The true jewel of 37 Seminole is the scenic, park-like property featuring immense privacy, mature specimen trees, Brick Patio and a built-in BBQ. Whether it's al fresco dining or hanging by a fire pit, this space exudes complete relaxation.

With its prestigious Deerfield neighborhood, close proximity to Midtown Direct train and New York City, top notch schools and convenience to fantastic shopping and restaurants, 37 Seminole is a true gem!



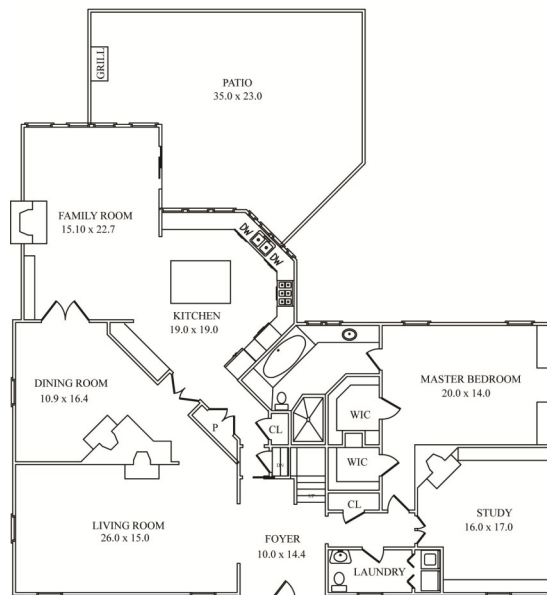
# Inside and Out...

## First Level

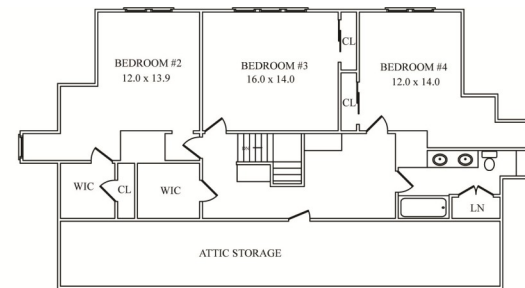
- Wood Entry Door with leaded glass sidelites
- Entry Foyer featuring hardwood floors, baseboard molding, recessed pendant light fixture, stairway to 2<sup>nd</sup> Level, mirrored pocket door to kitchen
- Living Room featuring entry pillars, hardwood floors, fireplace with custom millwork mantel with a washed wood finish, flagstone base and stone surround, crown molding, baseboard molding, recessed lighting, plantation shutters, in-ceiling speakers
- Hallway off Entry Foyer featuring hardwood floors, crown molding, baseboard molding, coat closet
- Hallway to Dining Room/Kitchen with stone accent wall and recessed lighting
- Powder/Laundry Room featuring wash basin sink, tile flooring, tile wainscoting, recessed lighting, hidden laundry closet with folding doors, LG front loader washer and dryer
- Office/Study featuring hardwood floors, baseboard molding, crown molding, custom library built-ins on 2 walls, window seat, fireplace with custom millwork mantel and stone surround, flagstone base, wallpaper, wood paneling
- Dining Room featuring hardwood floors, baseboard molding, crown molding, fireplace with custom millwork mantel with a washed wood finish, flagstone base and stone surround, recessed lighting, chandelier, plantation shutters, double French doors leading to Family Room, in-ceiling speakers
- Gourmet Chef's Kitchen featuring double French doors from hallway into Kitchen, hardwood floors, custom cabinetry with washed wood finish, 2 buffet/bar areas, glass door cabinetry, enormous island with storage and seating for 5, granite countertops, tile and granite backsplash, windows at backsplash level for view of backyard, recessed lighting, huge pantry with double barn doors, skylight, stainless steel Sub Zero refrigerator, stainless steel Wolf double wall ovens, Viking 6 burner cooktop, 2 stainless steel Kitchen Aid dishwashers, tiled hood with brick accent, display shelving over sink area, broom closet
- Family Room featuring hardwood floors, vaulted ceiling with rustic wood beams, picture window on back wall, skylights, recessed lighting, fireplace with custom millwork mantel and cobblestone trim, custom bookcases with rustic finish, sliding glass doors out to patio area, woven roman shades
- Master Bedroom suite featuring hardwood floors, crown molding, baseboard molding, custom built-ins with drawers, cabinets and open display shelving, dual walk-in closets, wood blinds, in-ceiling speakers
- Master Bathroom featuring marble tile flooring and backsplash, porcelain tile, custom vanity with tons of storage, built-in Jacuzzi tub, recessed lighting, tiled shower with glass door, nautical lighting in shower, handheld and regular showerheads, in-ceiling speakers

## Second Level

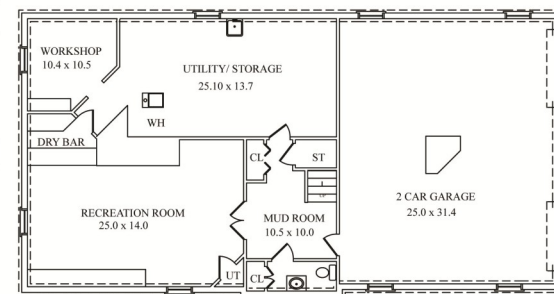
- 2<sup>nd</sup> Floor landing/loft area featuring carpeting, recessed lighting, baseboard molding, built-in bookshelves, walk-in closet with custom shelving, access to unfinished attic area
- Bedroom #2 featuring hardwood floors, baseboard molding, arched ceiling, enormous walk in closet with custom shelving, 3 windows
- Bedroom #3 featuring hardwood floors, baseboard molding, wallpaper, double door closet with sliding doors, triple windows
- Bedroom #4 featuring hardwood floors, baseboard molding, double door closet with sliding doors, 3 windows
- Renovated Full Bathroom featuring penny tile flooring, bead board wainscoting, custom double vanity with bead board detail and marble countertop, recessed lighting, shower over tub with subway tile surround, 2 two-light sconces over mirror, window seat with storage, plantation shutters, double door linen closet with floor to ceiling shelving



FIRST FLOOR



SECOND FLOOR



LOWER LEVEL

NOT TO SCALE - This floor plan is provided for illustration purposes only.  
Room positions and dimensions are approximate and should be independently measured for accuracy

## Lower Level

- Recreation Room featuring new carpeting, freshly painted paneling, Dry Bar Area, recessed lighting
- Hallway/Mudroom Area featuring new carpeting, storage closet (plenty of room for cubbies), recessed lighting
- Renovated Powder Room featuring tile flooring, single vanity, recessed lighting, overflow pantry storage closet
- Utility/Storage Room featuring utility sink, refrigerator, furnace and water heater
- Carpenter's Workshop with peg storage, work table
- 2 car Garage with electric doors

## Backyard

- About 1/3 Acre
- Lush, meticulously landscaped with blooming perennials
- Paver patio
- Brick retaining walls
- Built-in BBQ Area
- Fully fenced in yard
- Irrigation system

## Additional Features and Upgrades

- New Water Heater (2015)
- AC/Forced Air
- Alarm System
- Sump pumps/French drains
- Wired for speakers
- Hardwired natural gas generator
- Heated front walkway/steps

*Sue Adler*  
**KELLER WILLIAMS**  
PREMIER PROPERTIES



Cell: (973) 936-9129  
Office: (973) 376-0033 x101  
Sue@sueadler.com  
www.sueadler.com/37Seminole