

# 28 NORTH HILLSIDE AVENUE | CHATHAM



**sueadler**   
THE #1 KELLER WILLIAMS TEAM IN NEW JERSEY **team**

**kww** PREMIER PROPERTIES  
KELLERWILLIAMS.

Each Keller Williams office is individually owned and operated.



Welcome to 28 North Hillside! Don't miss this picture perfect 4 Bedroom, 1 Full Bath in Chatham's best location close to town, Midtown Direct Train, Memorial Park and Milton Avenue Elementary.

Walk up and admire the chic exterior with a modern farmhouse vibe. Step up the front steps into the fabulous enclosed front porch perfect for summer evenings and rocking chairs. Enter into the Entry Foyer and you know you have arrived somewhere special. Flow easily into the Living Room and admire the classic entry moldings and high ceilings. A stately fireplace, oversized windows and chic gray walls make this room the perfect spot to entertain friends or simply to cozy up with a book. Off the Living Room, you'll find a spacious Family Room with beautiful windows so the sunlight pours in. Get ready to host family gatherings and dinner parties in the adjoining Dining Room featuring hardwood floors, chandelier and a window looking out on the lush backyard. Move into the updated Kitchen where you are sure to be impressed. The Kitchen is ideal with crisp white cabinetry, sleek countertops, hardwood floors and stainless steel appliances. A conveniently located Laundry Room, with access to the backyard, makes entertaining seamless and summer barbeques a breeze. Walk down a few steps to find the Lower Level with plenty of potential for additional living space.





When it's time to retire for the evening, walk upstairs to find 4 spacious Bedrooms steeped in sunlight and each with plenty of closet space. A spacious updated Hallway Full Bath is the perfect complement to this level. Walk up a few more steps and prepare to be impressed by the spacious Third Level. With an Office, Guest Room and the perfect Game Room, the Third Level adds tons of functional space to the home.

Another show stopper of 28 North Hillside is the lush, level enclosed yard featuring immense privacy and great space for outdoor entertaining. Whether it's al fresco dining or roasting marshmallows, the backyard has plenty of room for any entertaining pursuit.

28 North Hillside Avenue is the perfect home in the best location. With easy access to restaurants and shopping, proximity to Milton Elementary and Midtown Direct train, this home is a must see and won't last at this price!



# INSIDE & OUT

## FIRST LEVEL

- Enclosed Front Porch/Mud Room featuring carpeting, windows at 2 exposures, ceiling fan/light fixture
- Living Room featuring carpeting, high ceilings, chandelier, fireplace with original mantle, staircase to Second Level, crown molding, baseboard molding, painted soothing gray
- Family Room featuring carpeting, oversized windows, baseboard molding, crown molding, archway to Dining Room
- Dining Room featuring hardwood floors, pocket door, built in China, chandelier, original window moldings, baseboard molding, crown molding, doorway to Kitchen
- Renovated Kitchen featuring hardwood floors, custom cabinetry, breakfast bar, stainless appliances, pendant lighting, recessed lighting, door to Laundry Room
- Laundry Room with rear entrance

## SECOND LEVEL

- Bedroom #1 featuring carpeting, oversized windows, baseboard molding, crown molding, Closet
- Bedroom #2 featuring carpeting, ceiling fan/light fixture, oversized windows, baseboard molding, crown molding, Closet
- Bedroom #3 featuring carpeting, ceiling fan/light fixture, oversized windows, baseboard molding, crown molding, Closet

- Bedroom #4 featuring carpeting, ceiling fan/light fixture, oversized windows, baseboard molding, crown molding, Closet
- Full Bathroom featuring tile flooring, vanity, shower over tub

## THIRD LEVEL

- Office featuring hardwood floors, vaulted ceiling, oversized windows, baseboard molding
- Storage Room
- Potential Bedroom #5 featuring hardwood floors, oversized windows, baseboard molding
- Game Room featuring hardwood floors, vaulted ceiling, oversized windows, baseboard molding

## LOWER LEVEL

- Storage Room
- Utility Room
- Workshop

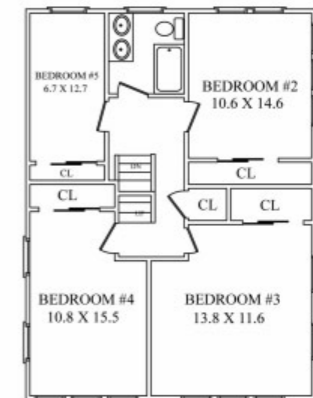
## BACKYARD

- 1 car detached garage (sold AS IS)
- Flat, fully fenced in yard

## THE FLOOR PLAN



FIRST LEVEL



SECOND LEVEL



THIRD LEVEL



CELL: 973.936.9129  
OFFICE: 973.376.0033 x101  
EMAIL: info@sueadler.com  
sueadler.com/28NHillside