

Each Keller Williams office is individually owned and operated.



125 SILVER SPRING ROAD | SHORT HILLS



Welcome to 125 Silver Spring! Nestled on one of the most convenient blocks near sought after Deerfield school, you will find this move in ready updated and expanded 4 Bedroom, 3½ bath split level boasting tons of sunlight, fabulous Gourmet Chef's Kitchen and dazzling Family Room. Enjoy all this home has to offer with top-notch Millburn schools, proximity to New York City, Midtown Direct train and close to Short Hills Mall luxury shopping and downtown Millburn shopping and restaurants.

Charming red shutters, crisp landscaping and a handsome stone walkway are the perfect introduction to this impeccable home. Step inside the welcoming front door to find the Entry Foyer featuring travertine tile floors and a generous Coat Closet. Enter the blissful, sun drenched Living Room with a huge picture window, hardwood floors and a classic fireplace with lovely millwork and stone surround. Flow easily into the luminous formal Dining Room perfect for hosting dinner parties with friends. Move effortlessly from the Dining Room to the fabulous Family Room addition with a vaulted ceiling, fireplace and windows at 3 exposures. Whether it's cozing up by the fire or family game night, this is the perfect spot to entertain. Accessed from the Family Room and Den, don't miss the large Deck, built in 2014, perfect for al fresco dining and breezy summer evenings. Off of the Family Room, move easily into the picture perfect Eat In Gourmet Chef's Kitchen that will impress even the fussiest of chefs. Crisp shaker style white cabinetry, granite countertops and stainless appliances all contribute to the Kitchen's appeal. A roomy Den/Office rounds out the First Level.





Ready to retire for the evening? Walk up the stairs to find two generously sized bedrooms gleaming with natural light. The Master Bedroom is spacious and well designed with windows at two exposures, hardwood floors and 2 roomy closets. The tasteful Master Bathroom is well appointed with lovely tile and ample vanity. Generous Bedroom 2 features plenty of light and abundant closet space. Bedroom 2 is complemented by the tastefully updated Hall Full Bath featuring a sizable wood vanity, stylish tile and its own Linen Closet. Walk up a few steps and you will be in awe of the two additional light and airy Bedrooms with hardwood floors, neutral paint color, plenty of closet space and share the charming Hall Full Bathroom featuring original tile and a spacious wood vanity.

And there's more! The "Walk Out" Lower Level, with an addition with access to the backyard, provides tremendous living space. The sizable Recreation Room has 2 distinct areas so that you can have a Recreation/Children's Play Area and an Exercise Room. Laundry is a snap in the convenient Laundry Room with built-in cabinetry. The area outside the entrance to the garage has plenty of space to serve as a mudroom with hooks and storage. Finally, there is plenty of storage/utility space to ensure that not a thing will be out of place. A Half Bath rounds out the Lower Level.

With its incredible upgrades, proximity to Deerfield school, proximity to Midtown Direct train and convenience to fantastic shopping and restaurants, 125 Silver Spring is an incredible value and simply won't last!



INSIDE & OUT

FIRST LEVEL

- Entry Foyer featuring original wood door with panel detail, travertine tile floor, recessed lighting, Coat Closet, staircase to 2nd level, open to Living Room
- Living Room featuring hardwood floors, fireplace with custom millwork mantle and stone surround and hearth, baseboard molding, large picture window, window shades, open to Dining Room and Den
- Dining Room featuring hardwood floors, chandelier, baseboard molding, open to Kitchen and Family Room
- Den featuring carpeting, windows at 2 exposures, exposed brick, window shades, baseboard molding, crown molding, door to Deck
- Family Room (built 2014) featuring hardwood floors, gas fireplace with stone surround and hearth, vaulted ceiling, recessed lighting, sliding French doors out to deck, vertical blinds at French door, casement windows at 3 exposures
- Gourmet Chef's Kitchen featuring travertine tile flooring, custom shaker style wood cabinets, granite countertops, stainless sink, rollout pantry cabinet, Maytag stainless oven and broiler, GE stainless built in microwave, Bosch stainless dishwasher, Maytag cooktop, venting to outside, window with 2 shelves, recessed lighting, baseboard molding, café curtain, door to Lower Level

SECOND LEVEL

- Second Floor Landing featuring carpeting, Linen Closet, baseboard molding, flush mount light fixture
- Master Bedroom Suite featuring hardwood floors, windows at 2 exposures, ceiling fan, recessed lighting, double door Closet, 2nd Closet, baseboard molding, curtains and window shades, Master Bathroom featuring tile flooring, vanity with storage, fan, 3 light sconce, shower with glass door and tile surround, fan/light combination
- Bedroom #2 featuring carpeting, windows at 2 exposures, Closet, curtains, window shades, flush mount light fixture, baseboard molding
- Full Hall Bath featuring tile flooring, custom cut mirror, 4 light sconces, shower over tub with tile surround, Linen Closet, valence and window blind

THIRD LEVEL

- Bedroom #3 featuring hardwood floors, recessed lighting, arched ceiling, 2 windows, window valences and shades, baseboard molding, Closet
- Office/Bedroom #4 featuring hardwood floors, recessed lighting, arched ceiling, windows at 2

exposures, Closet, baseboard molding, door to unfinished attic storage

- Full Hall Bathroom featuring original tile flooring, original tile wainscoting, vanity with storage, built in soap and toothbrush holders, shower with glass door and tile surround, Linen Closet, built in medicine cabinet, light over medicine cabinet, flush mount light fixture, window blind

LOWER LEVEL

- 1 car garage with electric door
- 2nd Floor landing featuring laminate flooring, door to garage, flush mount light fixture, baseboard molding
- Half Bathroom featuring laminate floor tile, wood vanity with storage, hanging storage cabinet, custom cut mirror, vanity lighting, flush mount light fixture, pocket door to laundry
- Laundry Room laminate floor tile, Kenmore top loader washer and dryer, built in upper cabinetry, door to backyard
- Recreation Room featuring carpeting, drop ceiling, recessed lighting, baseboard molding, Closet, double door Closet
- Exercise Studio Area (2nd part of Recreation Room) featuring wood look laminate floor, recessed lighting, baseboard molding, large picture window, vertical blinds, door to backyard, Closet
- Unfinished walk in Storage/Utility Room

FRONT/BACKYARD

- Large Deck (new 2014) with access to Den and Family Room
- Flat backyard with mature specimen trees
- All new drainage with sump pump, dry well and French drains (2014)

ADDITIONAL FEATURES & UPGRADES

- Freshly painted neutral hues throughout
- Newer roof
- HVAC (new 2017)
- Kitchen Renovation (2014)
- Family Room/Lower Level Addition (2014)



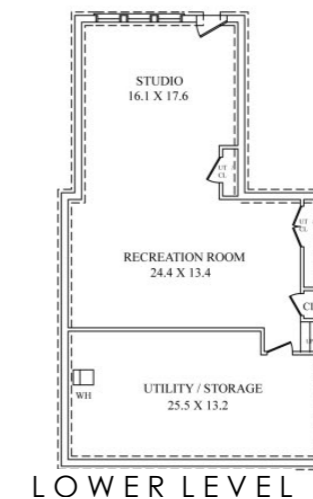
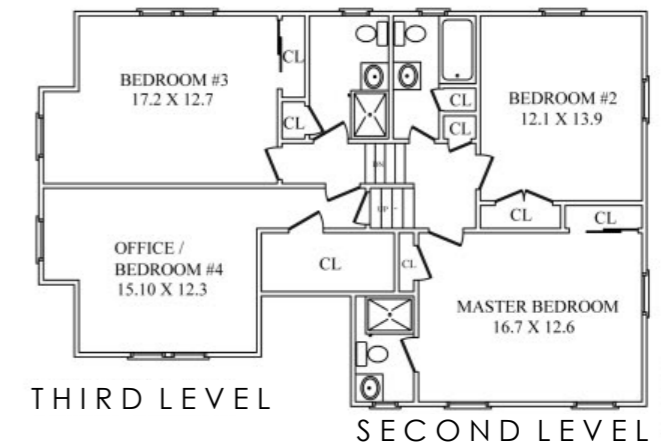
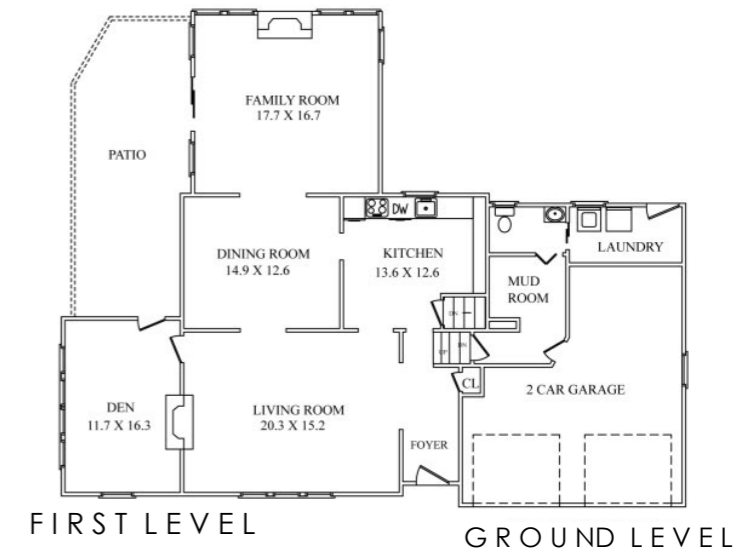
CELL: 973.936.9129

OFFICE: 973.376.0033 x101

EMAIL: info@sueadler.com

sueadler.com/125SilverSpring

THE FLOOR PLAN



All information deemed reliable but not guaranteed