

610 SPRINGFIELD AVENUE | SUMMIT, NJ



kw PREMIER
PROPERTIES
KELLERWILLIAMS

Each Keller Williams office is individually owned and operated.

sueadler 
THE #1 KELLER WILLIAMS TEAM IN NEW JERSEY **team**





Welcome to 610 Springfield Avenue, the BEST location in Summit! It is not every day that a home with this much charm and a location this extraordinary comes on the market. With exquisite original craftsmanship, architectural details and lovely renovations throughout, 610 Springfield Avenue is an absolute dream.

Drive up to the spacious corner lot and prepare to be amazed. First, you are greeted by a wraparound front porch perfect for rocking chairs and lemonade. The spacious and sunlit Foyer features gleaming hardwood floors, breathtaking millwork and gorgeous views of the formal Living Room and stately staircase. Move into the sun-drenched Living Room gracefully adorned with its stunning statement fireplace and a bay of windows with lovely views of the exquisite property beyond. Curl up with a cup of tea or a book in the Family Room with a second cozy fireplace. The spacious Family Room is well-suited for entertaining, family game night or movie watching. Proceed into the nearby formal Dining Room with magnificent moldings, a gorgeous bay of windows and plenty of space to host family gatherings and gourmet dinners. Flowing off the Dining Room is a beautifully renovated Eat In Chef's Kitchen with custom wood cabinetry, Brazilian granite countertops and high-end stainless steel appliances. Don't miss the spacious Laundry (potential for Mudroom), conveniently located on the First Level. A renovated Powder Room with a stylish vanity rounds out the 1st Floor.



When it's time to retire for the evening, the traditional staircase leads you to the graceful 2nd Floor Landing. Luxury abounds in the private and light filled Master Bedroom Suite with a divine Dressing Room, huge Walk In Closet and spa-like bath. Three additional bedrooms are steeped in sunlight and include generous closets and large windows. A bright and sunny office with custom built in shelving is the perfect spot to work from home. A large Renovated Full Hall Bathroom rounds out the 2nd Level. The open and airy 3rd Level features roomy Bedrooms 5 and 6 and a second Office. With a Full Bath on the Third Level, this is the perfect spot for guests or an au pair.



Another show stopper of this home is the outdoors. Mature specimen trees, foundation plantings and blooming perennials are yours to enjoy from the wrap around front porch or when you are relaxing in the backyard. The backyard, complete with plenty of room for al fresco dining, entertaining and play, aims to please.

This truly is an amazing opportunity to own a charming classic Summit home walkable to everything. Steps to downtown, NYC transportation, and shopping and restaurants, 610 Springfield Avenue is an absolute must see!

I N S I D E + O U T

FIRST LEVEL

- Wrap around Front Porch, original stone pillars
- Entry Foyer featuring original front door, hardwood floors, original woodwork and moldings, chandelier
- Original staircase with new carpeting/runner (2015) off of Foyer
- Living Room featuring hardwood floors, original fireplace, original woodwork and moldings, baseboard molding, crown molding, open to Dining Room
- Dining Room featuring hardwood floors, bay of windows with window seat, chandelier, baseboard molding, built in Dry Bar/Buffer with lower and upper cabinetry
- Gourmet Chef's Kitchen (renovated 2010) featuring custom cabinetry with built-in dish racks and wine racks, pantry, glass door cabinetry, custom cut Brazilian granite counters, Italian tile floors, raised ceiling, Bosch stainless refrigerator, JennAir stainless down draft oven and KitchenAid stainless dishwasher, flush mount light fixture, Breakfast Area with chandelier, 2nd staircase to Second Level
- Family Room featuring hardwood floors, fireplace with original mantle, original moldings, pendant light fixture, door to Porch
- Laundry Room/Mud Room featuring tile flooring, Speed Queen commercial heavy duty washer and Whirlpool dryer
- Renovated Rear Porch (2016) with stained glass windows, new double windows
- Renovated Powder Room (2010) featuring tile flooring, vanity, baseboard molding

SECOND LEVEL

- Master Bedroom Suite featuring hardwood floors, Dressing Room with double French doors, His and Her Walk In Closet (renovated 2015), Master Bathroom (renovated 2010) featuring new floor tiles, double vanity, huge wall mirror, chair rail and crown molding
- Renovated Full Hall Bathroom (2010) featuring new floor tiles, double vanity, two mirrors, stone countertop, shower, fan, recessed lighting

- Office featuring hardwood floors, bead board ceiling, built in bookcases, oversized windows
- Bedroom #2 featuring hardwood floors, fireplace with original mantle, Closet, baseboard molding, crown molding
- Bedroom #3 featuring hardwood floors, bay of windows with window seat, Closet, baseboard molding, crown molding
- Bedroom #4 featuring hardwood floors, exposed brick, oversized windows, Closet, baseboard molding, crown molding

THIRD LEVEL

- Bedrooms #5 and #6 featuring hardwood floors, spacious Closets
- Renovated (2010) Full Bathroom featuring floor tile, original tub, pedestal sink
- Office

LOWER LEVEL

- Utility/Storage Rooms with tons of potential for Recreation Room, Arts and Crafts Room, Exercise Room and/or Wine Cellar

FRONTYARD/BACKYARD

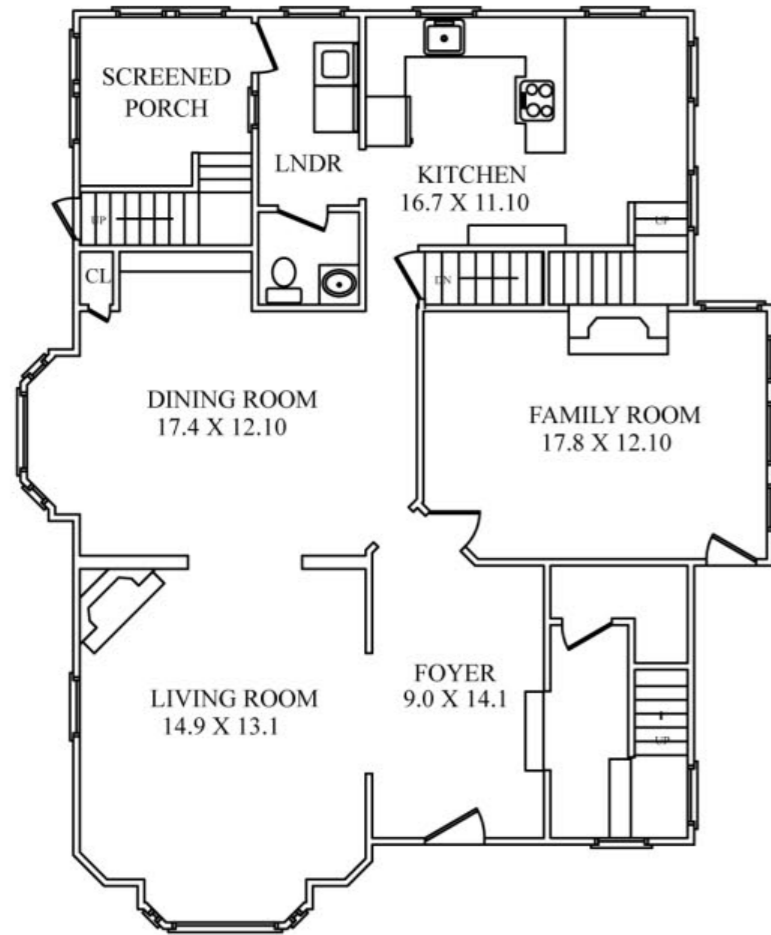
- Spacious corner lot (almost 1/3 Acre)
- Professional landscaped property includes close to 100 plants
- Stone table and 3 stone benches were installed on a round stone patio at the center of the backyard (2016)
- The fourth stone bench was put to the left side of house in the garden (2016)
- Resurfaced long wraparound driveway, installed Belgian Blocks to both sides of the driveway (2016)
- Garden Arbor installed to the back yard with Yellow Jasmin planted on the arch (2016)
- 18 Arbor Vitae trees planted for privacy in back yard (2016)
- Butterfly bushes, Jacob's ladder, flowering almond, balloon plants, hosta plants and many other plants planted (2016)

ADDITIONAL FEATURES + UPGRADES

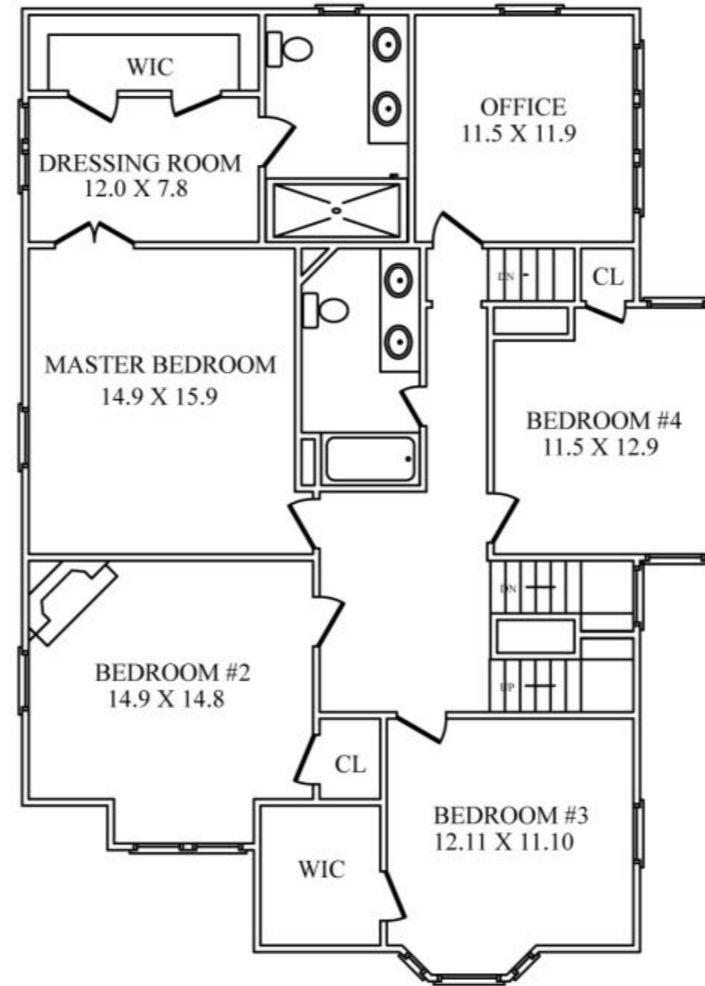
- Central AC
- 60 New double pane windows installed throughout - Best brand double pane windows with special air pumped in-between from A.G. Edwards in Summit. Each window frame has 2 layers of construction: wood facing inside and white facing outside
- First floor flooring gutted in the foyer, living room, dining room and family room and replaced with new hard red oak wood flooring
- Second and third floors sanded and refinished all wood floors
- New Electric Wiring throughout
- New Ceilings throughout
- Back porch rebuilt (old floors were tilted for the rain to run off before it was enclosed) with new double windows and relocated two stained glass windows
- New stainless steel chimney liner installed
- 2.5 ft x 10 ft long L-shaped custom workbench installed in basement
- Fixed and repainted front porch
- Re-opened door to gain access to porch from family room
- Newer Light Post in the backyard
- Closets fitted with new stainless steel rods; some painted and added lights
- Walls on all three floors resurfaced with plaster and painted



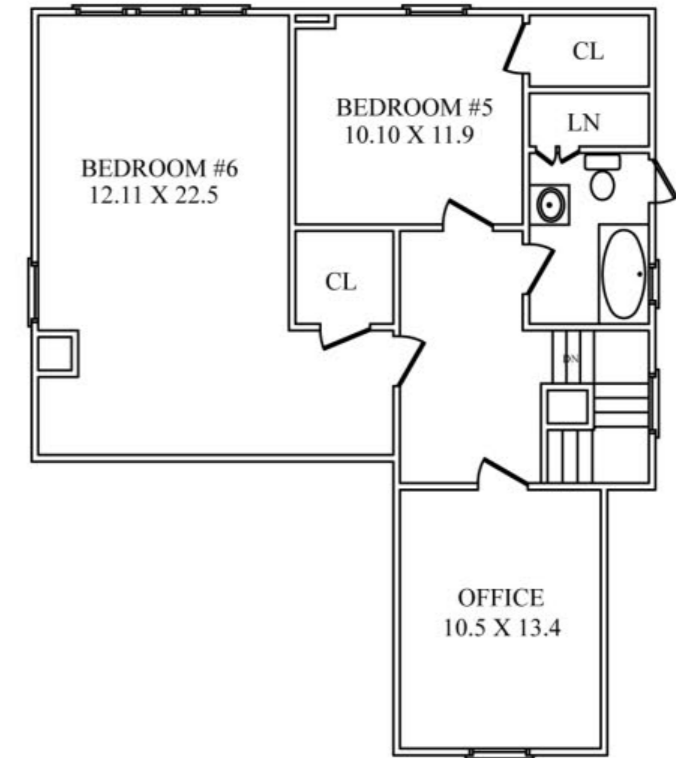
THE FLOORPLAN



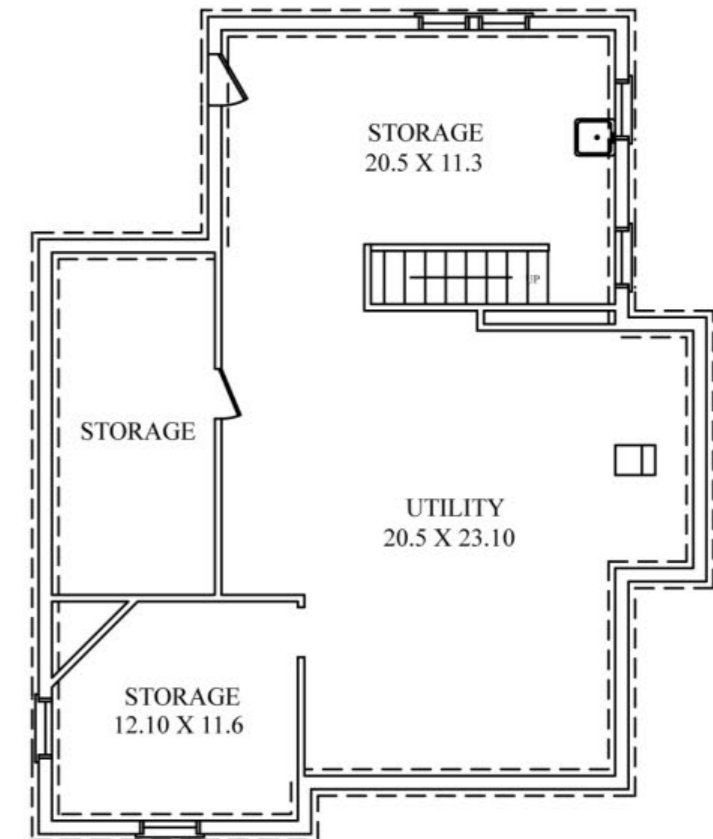
FIRST LEVEL



SECOND LEVEL



THIRD LEVEL



LOWER LEVEL

NOT TO SCALE - This floor plan is provided for illustration purposes only.
Room positions and dimensions are approximate and should be independently measured for accuracy



sueadler 
THE #1 KELLER WILLIAMS TEAM IN NEW JERSEY **team**

CELL: 973.936.9129
OFFICE: 973.376.0033 x101
info@sueadler.com
sueadler.com/610Springfield

kw PREMIER
PROPERTIES
KELLERWILLIAMS.