

Each Keller Williams office is individually owned and operated.



26 WOODLAND ROAD
SHORT HILLS, NJ



Drive up to 26 Woodland Road and you feel you have arrived at another time and place. This delightful 5 Bedroom, 2.5 Bath Colonial. Located on a family friendly block in the heart of Glenwood and just steps from downtown Millburn restaurants and shopping, Millburn High School, Direct Train to NYC and top-rated Glenwood School, 26 Woodland is just waiting to be called home.

Drive up the beautiful tree-lined street and you will come upon this stunning colonial sitting majestically on a spacious corner lot. The meandering bluestone walkway, charming shutters and front garden make for the ultimate in curb appeal. Enter into the Entry Foyer glowing with natural light and featuring a graceful staircase leading to the second floor. Move into the sun-drenched Living Room with its statement fireplace, gleaming hardwood floors and fabulous built ins perfect for displaying your wares. Elegant dinner parties await in the oversized formal Dining Room featuring hardwood floors and easy access to the Kitchen beyond. Move into the Country Kitchen with plenty of counter space, a built in Desk Area and high end stainless appliances. Enjoy movie and game nights in the spacious Family Room with custom cabinetry and a beautiful bay window so that the light pours in. Don't miss the exquisite outdoors with an enormous patio with plenty of room for al fresco dining or just spending time with family and friends. Immense privacy and meticulous landscaping make this the ultimate outdoor retreat. In addition to the Patio, the property has plenty of green space for play. A conveniently located Powder Room and attached 2 car garage round out the First Level.



Ready to retire for the evening? Walk up the stately staircase to the elegant Second Floor where you can enjoy immense privacy in the roomy Master Bedroom Suite complete with two Closets additional eave storage and your own Master Bath with a great vintage vibe. Bedrooms 2 and 3 boast generous closets and abundant windows allowing for plenty of light. Bedroom 4 can flexibly be used as a Nursery or Office. A tasteful Full Hall Bathroom rounds out the Second Level. Don't miss the Third Level where there is an enormous 5th Bedroom with a huge Closet.

And there's more! The unfinished Lower Level offers plenty of potential space to be converted into a Recreation Room, Exercise Room and/or Wine Cellar. Laundry and utility storage round out the Lower Level.

This is an incredible opportunity to own a home in one of Short Hill's best neighborhoods. Just minutes from Glenwood School, Millburn High School, Short Hills train station, Hartshorn Arboretum and downtown Millburn shopping, 26 Woodland is an absolute must see!



INSIDE & OUT

FIRST LEVEL

- Entry Foyer featuring original front door with sidelites and transom, hardwood floors, baseboard molding, crown molding, painted neutral hue, Coat Closet in rear foyer
- Formal Dining Room featuring hardwood floors, baseboard molding, crown molding, painted neutral hue, swinging door to Kitchen
- Living Room featuring hardwood floors, original fireplace with detailed millwork mantle and brick surround, custom built in bookcases, baseboard molding, crown molding
- Family Room/Den featuring hardwood floors, brick accents, custom built ins with open and concealed storage, paneled walls, bay window
- Powder Room featuring tile flooring, wall mount sink, flush mount light fixture
- Rear Hallway with door to backyard
- Kitchen featuring tile flooring, wood cabinetry, laminate countertops, Breakfast Bar, built in Desk Area, 2nd Front Entrance, recessed lighting, GE stainless refrigerator/freezer, Kitchen Aid stainless dishwasher, Verona stainless 6 burner oven/range, stainless hood, woven shades, door to garage
- 2 car attached garage

SECOND LEVEL

- Second Floor Landing featuring hardwood floors, architectural window at landing, Linen Closet
- Master Bedroom Suite featuring hardwood floors, 2 Closets, door to eave storage, baseboard molding, woven shades, Bathroom featuring original floor and wall tile, original pedestal sink, original shower over tub, original medicine cabinet, 2 light sconce, flush mount light fixture
- Full Hall Bathroom featuring vanity, original floor and wall tile wainscoting, medicine cabinet, 2 sconces, shower, door to Bedroom #2
- Bedroom #2 featuring hardwood floors, woven shades, baseboard molding, flush mount light fixture, Closet, door to Hall Bathroom
- Bedroom #3 featuring hardwood floors, woven shades, baseboard molding, flush mount light fixture, double door Closet

- Bedroom #4 featuring hardwood floors, woven shades, flush mount light fixture, Closet, baseboard molding

THIRD LEVEL

- Bedroom #5 featuring hardwood floors, vaulted ceiling, recessed lighting, Closet, door to eave storage

LOWER LEVEL

- Unfinished with plenty of room for Recreation Room, Exercise Area, Wine Cellar and storage
- Utility Storage
- Laundry

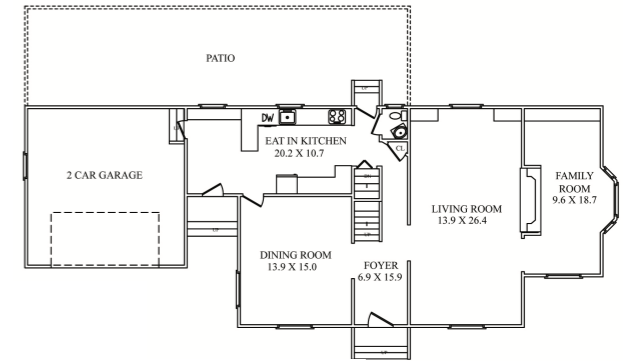
FRONT/BACKYARD

- Spacious corner lot with lush front and side grassy areas
- Curved bluestone and brick front walk
- Professionally landscaped with blooming perennials and mature plantings
- Fully fenced in yard
- Large private rear patio with dining and conversation areas
- Irrigation

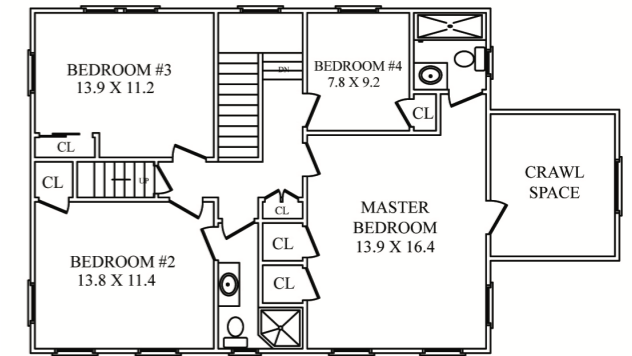
ADDITIONAL FEATURES/UPGRADES

- Original millwork doors and crystal hardware
- 3 zone AC
- Pella windows

THE FLOOR PLAN



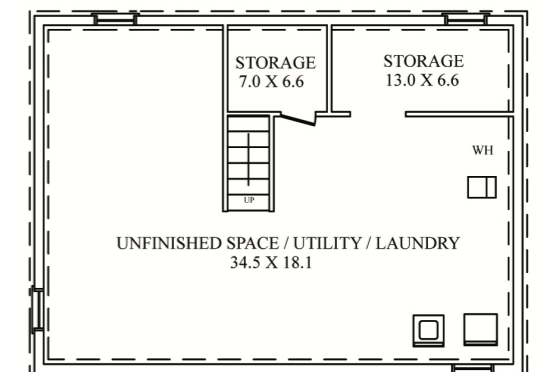
FIRST LEVEL



SECOND LEVEL



THIRD LEVEL



LOWER LEVEL

All information deemed reliable but not guaranteed



CELL: 973.936.9129
OFFICE: 973.376.0033 x101
EMAIL: info@sueadler.com
sueadler.com/26Woodland

