



18 HOBART AVENUE | SUMMIT









Welcome to 18 Hobart Avenue! It is not every day that a home this extraordinary, with a chance to own a piece of Summit history, comes on the market. This stunning Colonial Revival was built and lived in by the first mayor of Summit, George Vreeland. This exquisite 5 Bedroom, 4½ Bath home has been renovated from top to bottom to combine fantastic architectural details with every modern amenity a homeowner could desire. With a prime in town location, fabulous flow for entertaining, exquisite craftsmanship and high end finishes throughout, 18 Hobart is an absolute dream.



Holiday dinners are divine in the Formal Dining Room with its striking columns and moldings. Both the Living and Dining Rooms retain two of the home's ethereal original chandeliers. Need to work from home? It's an absolute pleasure in the elegant Study with its warm fireplace, coffered ceiling and charming window seat under a superb window. Be amazed by the spacious Family Room boasting a coffered ceiling and with double French doors out to the Sun Porch. The Sun Porch, featuring original period details, is the perfect spot for summer dinners or merely to contemplate your day.

The real "show stopper" of the First Level is the incredible Gourmet Chef's Kitchen where no detail has been overlooked. The exquisite sun-drenched Gourmet Kitchen (NEW 2018), featured in designNJ, is a chef's dream with its custom shaker style cabinetry, quartz countertops, and Thermador appliances. A custom enormous island with seating for 5 is the best in form and function. A separate Butler's Pantry/Coffee Bar is the perfect spot to mix cocktails or make your morning cappuccino. A Pinterest worthy Mudroom/Laundry Room makes laundry a pleasure and ensures nothing will be out of place. A beautifully renovated Powder Room rounds out the First Level.







When it's time to retire for the evening, the home's original stately staircase leads you to the Second Level. Luxury abounds in the private and light filled Master Bedroom with gracious windows, a Sitting Area and a fully custom Walk In Closet. Prepare to totally relax in the spa-like Master Bathroom complete with custom double vanity and jacuzzi tub. Four additional bedrooms are steeped in sunlight and include generous custom closets and lovely period details. A large Renovated Full Hall Bathroom is sure to please. Walk up a few steps to the immense Third Level with ensuite Bedroom 5 perfect for guests or an au pair. A smaller room on this level is ideal for storage or as an Exercise Room.

And there's more...The "walkout" Lower Level features a fabulous Recreation Room with new wood look flooring perfect for movie watching and children's arts and crafts. A large Guest Room/Bonus Room creates additional functional space or can even be converted to a Wine Cellar. Rounding out this level is a beautifully renovated Full Bathroom.

Words truly can't describe the perfection of this home, its astounding period details and the marvelous renovation this house has undergone. Once you see all of the tasteful and luxurious upgrades, you are sure to fall in love.





I N S I D E & O U T

FIRST LEVEL

- Entry Vestibule featuring original double glass doors, original half round decorative leaded glass windows, marble checkerboard floor, detailed moldings and ceiling
- Living Room featuring hardwood floors, original fireplace (converted to gas) with detailed decorative mantle with marble surround, copper cap and brick hearth, wainscoting, oversized original windows, custom window treatments, original chandelier, coffered ceiling, crown molding with dentil detail, open to Dining Room, original built in bench with detailed decorative moldings, original staircase with decorative moldings to Second Level
- Dining Room featuring original moldings and columns at entry, hardwood floors, wainscoting, oversized windows, custom window treatments, original chandelier, crown molding with dentil detail, open to Family Room
- Study/Library featuring designer carpeting, original fireplace with custom millwork mantle, wainscoting, coffered ceiling, built in window seat, oversized window with custom window treatment, 2 pendant lights, original built ins with open and concealed storage
- Family Room featuring hardwood floors, wainscoting, coffered ceiling, oversized double French doors with stained glass detail out to Screened In Porch, recessed lighting
- Screened In Porch featuring wood flooring, bead board ceiling, screens at 3 exposures, original pillars
- Gourmet Chef's Kitchen featuring hardwood floors, custom shaker style cabinetry, quartz countertops,

- oversized farm sink, island with seating for 5 and bar sink, range alcove with Thermador stainless 6 burner oven/range with griddle, Thermador stainless dishwasher, Fisher & Paykel stainless refrigerator/freezer, Sharp built in stainless microwave, brick accent, designer globe pendants over island, recessed lighting, tray ceiling with beadboard detail, globe light over sink, range alcove with oven and cabinetry, subway tile backsplash and open stone shelving, door to backyard, on trend brushed gold hardware
- Butler's Pantry/Coffee Bar featuring hardwood floors, custom cabinetry, under cabinet lighting, open shelving, Marvel wine refrigerator, globe light fixture
- Mud Room/Laundry featuring decorative mosaic tile flooring, hidden Laundry Closet, Samsung front loader washer and dryer, custom built in storage, Coat Closet, custom cabinetry with stainless laundry, sink, open shelving, window seat with open storage underneath, designer chandelier, vaulted ceiling, door to backyard
- Powder Room featuring basket weave floor tile, pedestal sink, fan, 2 pendant lights, wainscoting
- Front and rear staircase

SECOND LEVEL

- Second Floor Landing featuring hardwood floors, gallery overlooking first level, chandelier over staircase, deep baseboard and crown moldings, recessed lighting
- Master Bedroom Suite featuring hardwood floors, separate sleeping and Sitting Area, oversized windows with custom roman shades, deep

- crown and baseboard moldings, Walk in Closet with custom shelving, baskets and hanging storage
- Master Bathroom featuring marble floor tile, built in jacuzzi tub, oversized shower with tile surround and seat, custom built vanity with 2 sinks and separate vanity area, 2 sconces, recessed lighting, fan, Linen Closet
- Bedroom #2 featuring hardwood floors, oversized windows with custom roman shades, Closet with custom storage, recessed lighting, deep baseboard and crown moldings
- Bedroom #3 featuring hardwood floors, oversized windows with custom roman shades, Closet with custom storage, recessed lighting, deep baseboard and crown moldings
- Bedroom #4 featuring hardwood floors, oversized windows with custom roman shades, Closet with custom storage, recessed lighting, deep baseboard and crown moldings
- Full Hall Bathroom featuring marble floor tile, wallpaper, double wood vanity with marble countertop, 2 medicine cabinets, tub/shower combination with tile surround, fan, recessed lighting, 2 sconces, custom roman shade

THIRD LEVEL

- Carpeted staircase to Third Level, sconce
- Ensuite Bedroom #5 featuring carpeting, bead board wainscoting, vaulted ceiling, custom built in with open and concealed storage, window seat in dormer with architectural window, Bathroom featuring tile flooring, tub, wood vanity

- Storage/Exercise Room

LOWER LEVEL

- Guest Room/Bonus Room featuring tile flooring, Closet, track lighting
- Recreation Room featuring NEW laminate wood look flooring, brick accent wall, window seat with storage, storage closets, recessed lighting
- Rear hallway featuring wood and slate look tile, recessed lighting, door to backyard
- Full Bathroom featuring slate look floor tile, vanity, medicine cabinet, sconce, recessed light, fan, shower with pebble and slate look tile surround, rain showerhead
- Utility/Storage/Work Room
- French drains and sump pump

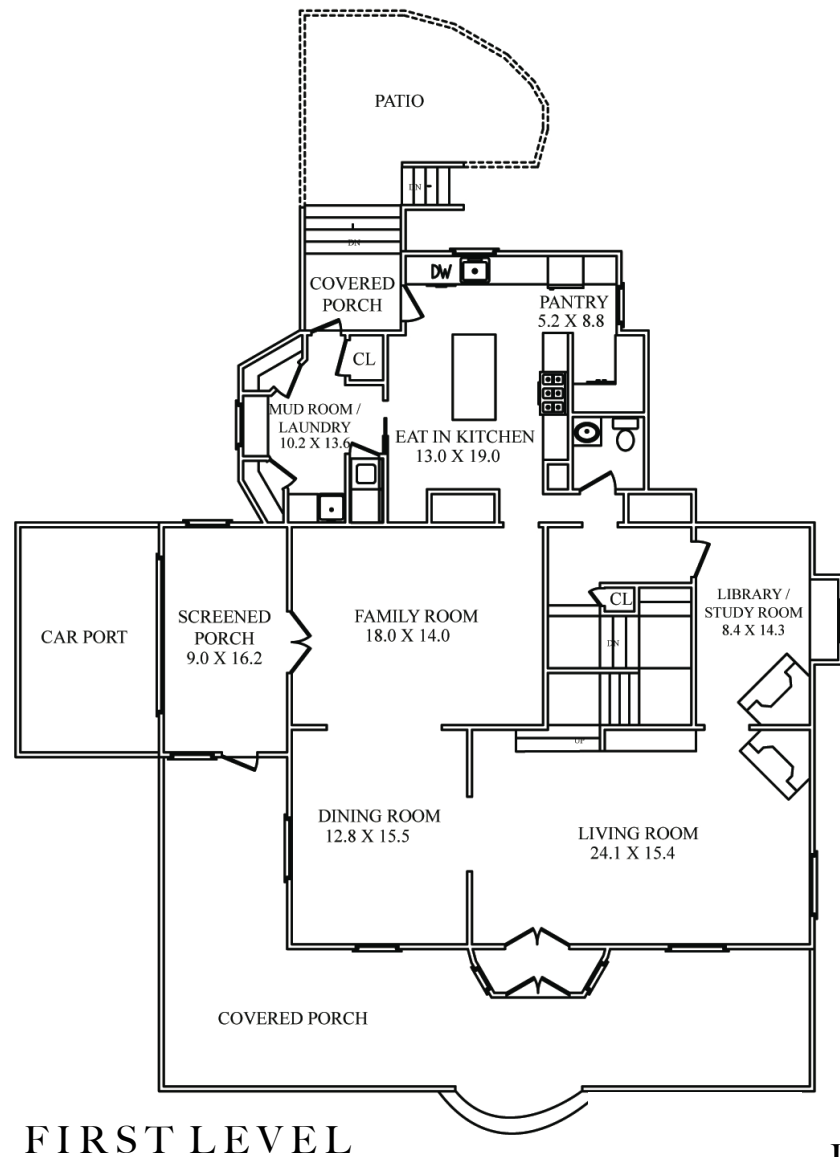
FRONT/BACKYARD

- Wraparound Front porch with bead board ceiling, 2 ceiling fans, porch swing
- Porte cochere at side of house
- Detached 2 car Garage/Carriage House with Loft above
- Patio
- Partially fenced in yard
- Playset
- Meticulous plantings and mature shade trees

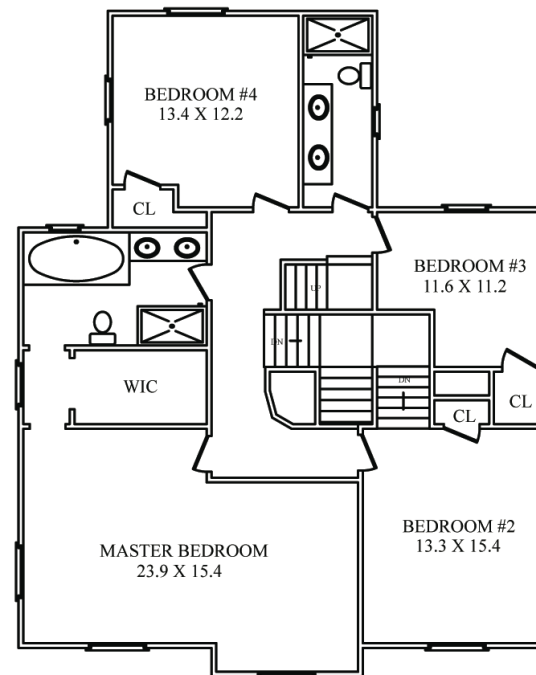
ADDITIONAL FEATURES /UPGRADES

- Original moldings and millwork throughout
- Heat/AC, 2 zones
- Security system

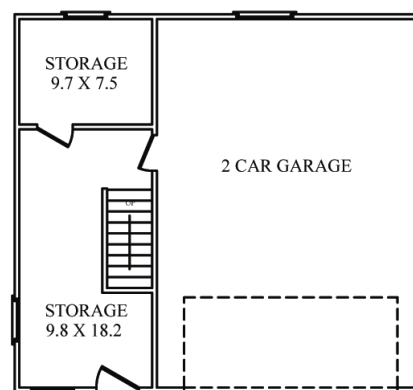
THE FLOORPLAN



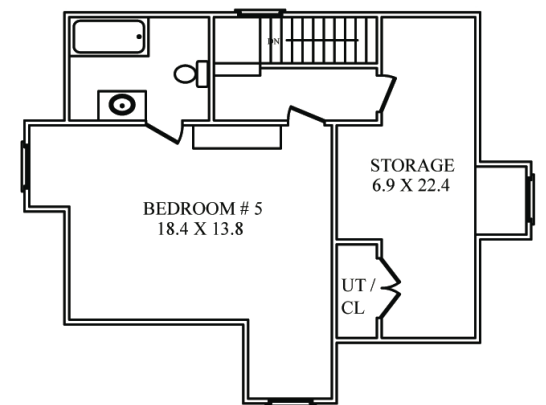
FIRST LEVEL



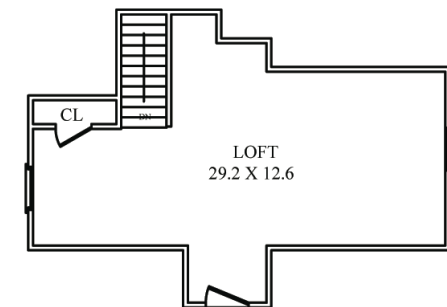
SECOND LEVEL



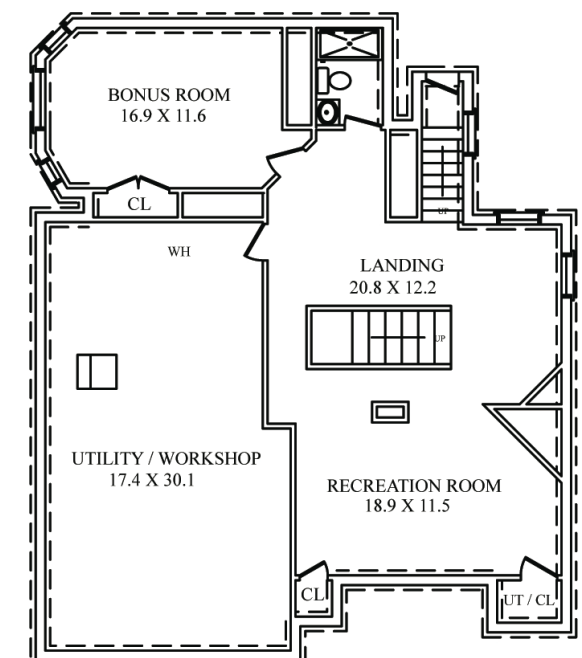
DETACHED GARAGE



THIRD LEVEL



DETACHED GARAGE SECOND LEVEL



LOWER LEVEL

NOT TO SCALE - This floor plan is provided for illustration purposes only.
Room positions and dimensions are approximate and should be independently measured for accuracy

