

54 MAPLE STREET | MILLBURN





Welcome to 54 Maple Street, a stunning 4 Bedroom, 3 1/2 Bathroom Colonial in the heart of the sought after Wyoming section. With an out of this world 2-story addition, a graceful open floor plan and every modern upgrade imaginable, this home will not last!

Pull up to 54 Maple Street and admire the bluestone walkway, meticulous landscaping with blooming perennials and welcoming front landing perfect for a rocking chair and lemonade. Enter through the charming arched front door into an Entry Vestibule that leads into the home boasting gleaming hardwood floors that extend through the entire first level. The expansive and bright Living Room is ideal for entertaining with its spectacular statement fireplace, tons of sunlight and designer window treatments. Flow easily through French doors into the serene Sun Room. The Sun Room, with windows at 3 exposures and flexibly being used as a Home Office, is the perfect spot to reflect and enjoy some quiet time. Dinner parties are divine in the Formal Dining Room with an impressive chandelier, chic gray hues and custom Roman shades. Flow from the Dining Room into the Gourmet Chef's Kitchen that will satisfy every chef's desire. Crisp white cabinetry, a shiplap and beamed ceiling, granite countertops and high-end Kitchen Aid and Bosch stainless appliances throughout are the best in form and function. Not a thing will be out of place with the Kitchen's Walk-In Pantry with floor to ceiling storage. Breakfast is served in the light-filled adjacent Breakfast Area with a huge picture window overlooking the idyllic backyard. And as if this wasn't all enough, don't miss the enormous Family Room bathed in sunlight due to a lavish use of windows. This room exudes relaxation and is well suited for family game night, movie watching and easily flows out to the gigantic Deck perfect for al fresco dining, playing with the kids or just spending time with friends. The Deck overlooks the enormous backyard that sits beneath a canopy of mature trees. The lush yard provides plenty of room for playtime and outdoor activities. A tastefully renovated Powder Room rounds out the First Level.





When it's time to retire for the evening, the stately staircase, beaming with natural light, leads you to the second floor with 4 spacious bedrooms and 2 full baths. The immensely private and spacious Master Bedroom Suite addition radiates comfort and relaxation with a vaulted ceiling, outstanding craftsmanship and floor to ceiling architectural windows allowing in tons of sunlight. The Master Suite is also functionally designed with THE BEST Walk-In Closet with custom built in drawers, hanging storage and adjustable shelving. You won't want to leave the spa-like Master Bathroom, complete with custom cabinetry, marble countertops and marble tile throughout. 3 additional large-sized bedrooms are steeped in sunlight and include generous closets. A renovated Hallway Full Bath, serving Bedrooms 2 through 4, is luxurious and well appointed with custom double cabinetry. Don't miss the staircase to the Third Level with additional "stand up" space easily converted to an additional Bedroom, Office and/or Playroom.

And that's not all! The Lower Level provides plenty of additional living space with a sizable Recreation Room perfect for movie watching or arts and crafts. Laundry is a snap in the Laundry Room with high end Kenmore front loader washer and dryer. A conveniently located Mud Room ensures that not a thing will be out of place. A full bath and additional Guest Room offer an ideal retreat for an au pair/nanny. Finally, storage closets galore ensure that clutter will always be neatly tucked away.

With its prestigious neighborhood, close proximity to Midtown Direct train and New York City, top-notch schools and convenience to fantastic shopping and restaurants, 54 Maple cannot be missed!





I N S I D E & O U T

FIRST LEVEL

- Entry Vestibule featuring hardwood floors, country door, flush mount light fixture, baseboard molding
- Living Room featuring hardwood floors, fireplace with brick surround and custom millwork mantle, Coat Closet, custom roman shades, baseboard molding, crown molding, recessed lighting, staircase to 2nd level, archway to Dining Room
- Sun Room/Office featuring double French doors with sidelites at entry, hard wood floors, windows at 3 exposures, woven shades, flush mount light fixture
- Family Room featuring hardwood floors, row of 4 windows overlooking backyard, double windows overlooking side yard, woven shades, ceiling fan, recessed lights, door to Deck, archway to Kitchen, baseboard molding
- Powder Room featuring hardwood floors, wood vanity with bead board detail, quartz countertop, Kohler toilet, flush mount light fixture, fan
- Renovated Gourmet Chef's Kitchen featuring hardwood floors, custom wood cabinetry, glass door cabinetry, granite countertops, stainless sink, gooseneck fixture, subway tile backsplash, shiplap and beamed ceiling, stainless Kitchen Aid refrigerator/freezer, stainless Kitchen Aid dishwasher, stainless Bosch 5 burner oven/range, Allure stainless hood, fabric roller shade, Walk In Pantry with floor to ceiling shelving, recessed lighting, Breakfast Area with pendant light fixture with drum shade, door to Lower Level
- Dining Room featuring hardwood floors, rectangular crystal chandelier, chair rail, baseboard molding, crown molding, custom roman shades

SECOND LEVEL

- Staircase with runner to Second Level, splits at top, Linen Closet with floor to ceiling

shelving at top of stairs, 2nd Linen Closet with floor to ceiling shelving at second floor landing, second floor landing has hardwood floors with walnut inlay

- Master Bedroom Suite featuring hardwood floors, vaulted ceiling, wall to wall and floor to ceiling windows with architectural arch above, custom window treatments, recessed lighting, chandelier, baseboard molding, Walk In Closet with hardwood floors, custom built ins with custom drawers, shelving and hanging storage, recessed lighting, 2 windows, room for vanity area
- Master Bathroom featuring wood look floor tile, custom wood vanity with "super white" marble countertop, Kohler toilet, frameless glass door shower with marble tile surround, storage niche, fan, flush mount light fixture, tilt mirror with elongated sconces on side, wood blinds
- Full Hall Bathroom featuring tumbled floor tile, subway tile wainscoting, shower over tub with subway tile surround, custom wood double vanity with stone countertop, Kohler toilet, 2 chrome mirrors, 3 wall sconces, flush mount light fixture, window with wood blind, built in shelving above toilet
- Bedroom #2 featuring hardwood floors with walnut inlay, chair rail, vaulted ceiling, ceiling fan/light fixture, 3 windows with shades, 2 Closets, baseboard molding, crown molding
- Bedroom #3 featuring hardwood floors with walnut inlay, ceiling fan/light fixture, 2 windows with shades, Closet, baseboard molding, crown molding
- Bedroom #4 featuring hardwood floors with walnut inlay, ceiling fan/light fixture, window with shade, Closet, baseboard molding, crown molding, door to unfinished 3rd Floor

THIRD LEVEL

- Unfinished storage space with potential for additional bedroom/playroom/office space

LOWER LEVEL

- Carpeted staircase to Lower Level
- Mud Room featuring tile flooring, door to driveway, recessed lighting
- Recreation Room featuring carpeting, recessed lighting, baseboard molding, wall air conditioning unit, window shades, double door Closet with floor to ceiling shelving, single door Closet, double door utility and storage Closet, Utility Closet with double doors, 2 Closets under stairs for storage
- Laundry Room featuring tile flooring, Kenmore front loader washer and dryer on pedestals, built in cabinetry with laminate countertop, utility sink, hanging bar, window with shade, flush mount light
- Bonus/Guest Room featuring carpeting, window with shade, recessed lighting, baseboard molding
- Full Bathroom featuring tile flooring, pedestal sink, corner shower with glass door and panels, flush mount light, window with shade, counter/storage area

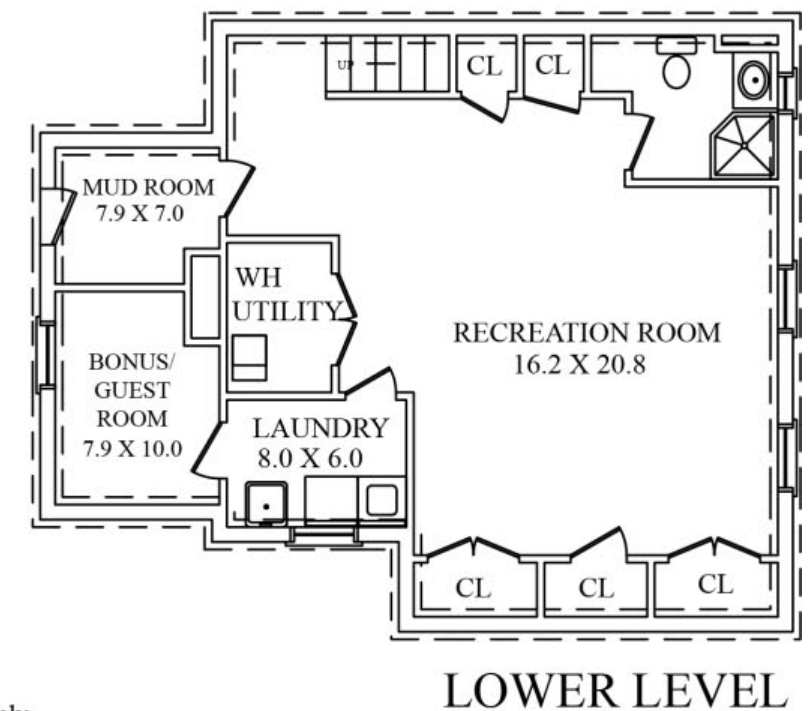
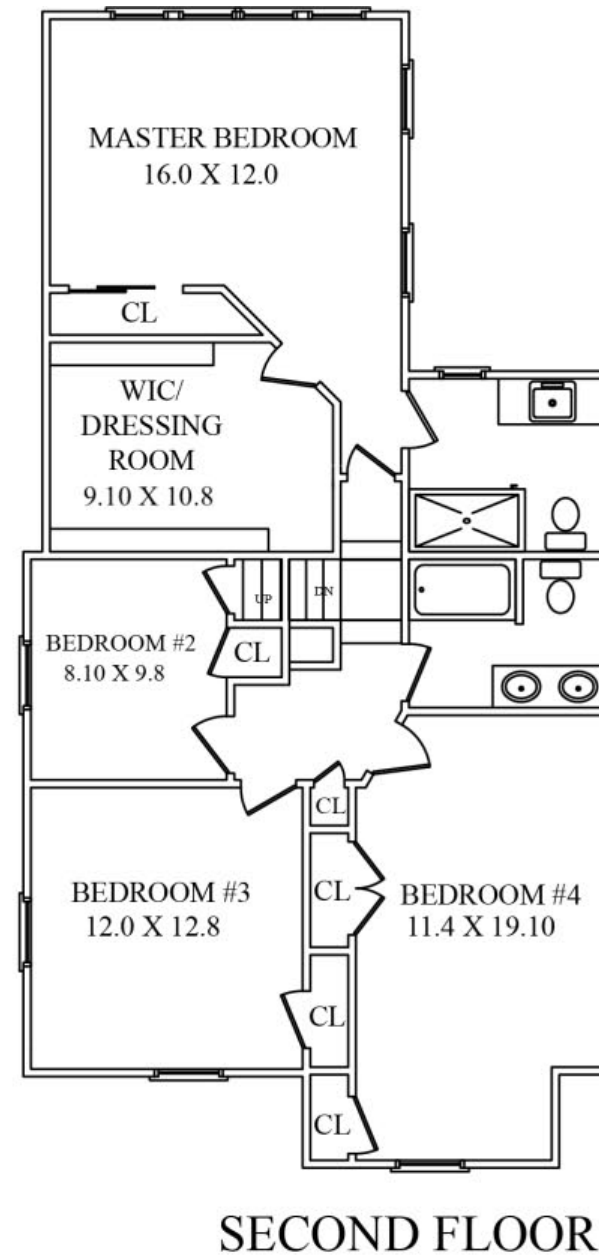
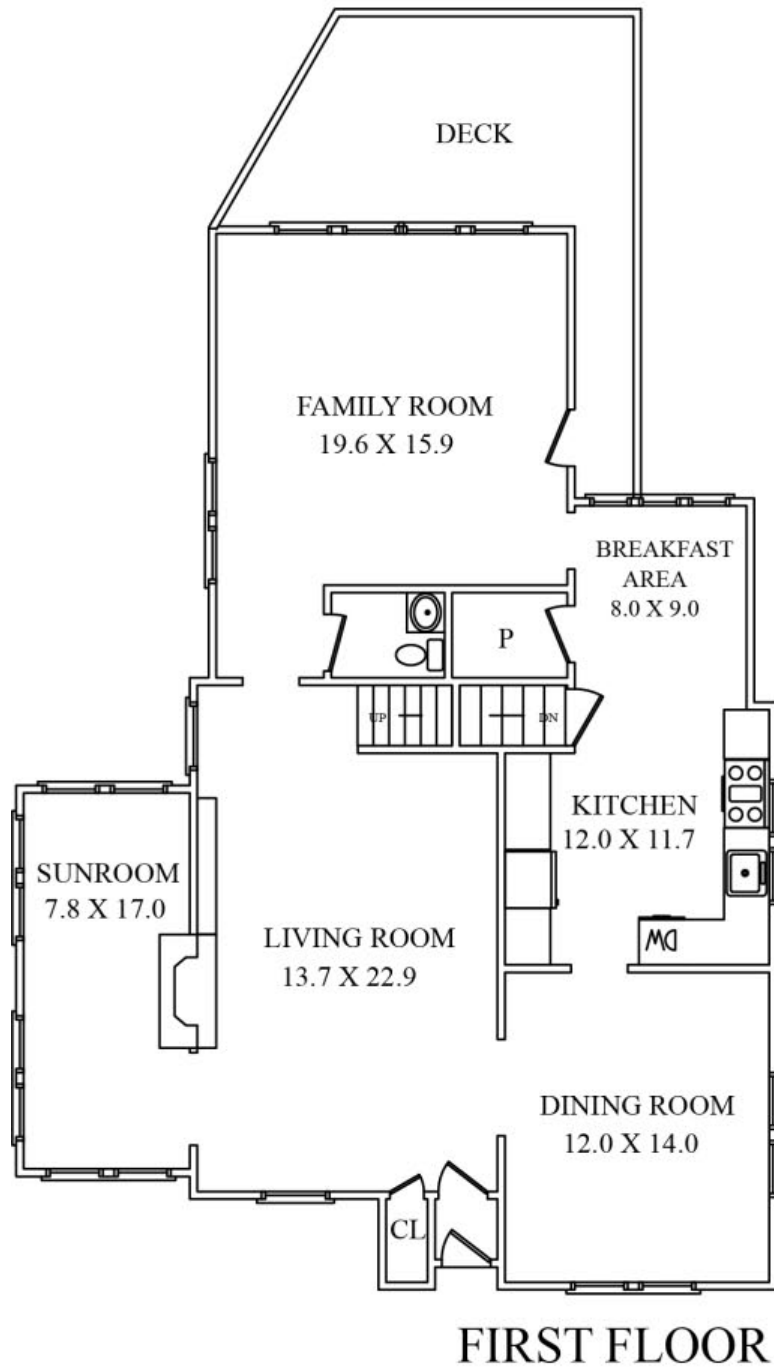
EXTERIOR

- Oversized Deck featuring gate, separate conversation and dining areas, easy access to Family Room
- Bluestone front walkway, bluestone steps with brick risers, stone landing with iron railings
- 1 car detached garage with storage shed
- Extra Deep Yard with mature specimen trees
- Irrigation, front and back

ADDITIONAL FEATURES/UPGRADES

- New HVAC 2017
- Crystal door knobs and original hardware throughout
- Freshly painted throughout
- Wired for alarm system

THE FLOOR PLAN



NOT TO SCALE - This floor plan is provided for illustration purposes only.
Room positions and dimensions are approximate and should be independently measured for accuracy



CELL: 973.936.9129
OFFICE: 973.376.0033 x101
EMAIL: info@sueadler.com
sueadler.com/54Maple



All information deemed reliable but not guaranteed

