



23 HURON DRIVE | CHATHAM, NJ





Welcome to 23 Huron Drive! Beautifully situated on a spectacular ridge in Chatham's prestigious Highlands Association neighborhood, this elegant 4 Bedroom, 3 $\frac{1}{2}$ Bath Center Hall Colonial, provides breathtaking views everywhere you turn with completely on trend style and design.





Drive up the driveway and you'll find the warm and welcoming Entry Door. The bright and sunny Foyer features gleaming hardwood floors, a spacious Coat Closet and a view of the gracious staircase leading to the Second Floor Landing. Flow easily into the exquisite Living Room with an elegant statement fireplace, magnificent shadow box moldings and a gorgeous window overlooking the picturesque ridge beyond. A stunning Library is ready to host an assortment of reading pleasures. Dinner parties are divine in the elegant formal Dining Room complete with soothing gray hues, a charming chair rail and an inset ceiling.



The stunning Gourmet Chef's Kitchen is sure to satisfy every chef's desire. An abundance of custom, warm wood cabinetry, sleek granite countertops and high-end stainless steel appliances are the best in form and function. Prepare to be overwhelmed by the light-infused adjacent Breakfast Area with a dramatic bay of floor to ceiling windows, expansive views and two sets of French doors leading out to a spectacular Deck. Off of the Kitchen Area, you are sure to be impressed by the beautiful Family Room. This room, which includes its own custom Wet Bar, exudes relaxation and is well suited for family game night, movie watching or cozy nights by the fireplace. Accessed from the Breakfast Room, enjoy the stunning wrap around Deck where you will literally feel like you are floating above the trees. Extensive landscaping, serious birdwatching and the out of this world views ensure magical get togethers for you and your guests. A tasteful Powder Room round out the First Level.



Ready to retire for the evening? Wander up the elegant staircase and prepare to relax in the private, roomy and sunlit Master Bedroom Suite. Soothing hues, a sublime Sitting Room with a private balcony and a Dressing Room all aim to please. Getting ready is a pleasure in the large Master Bathroom featuring a custom double vanity, marble throughout and a jacuzzi tub with views for miles.





Two Bedrooms feature gleaming hardwood floors and spacious closets and share the spacious Full Hall Bathroom complete with a double vanity, chic mosaic tile and a roomy shower over tub combination. A convenient Ensuite Bedroom rounds out this level.

And there's more! The "Walk Out" Lower Level boasts a fully finished Recreation Room, perfect for endless hours of family entertainment. An Office is great for working from home and plenty of storage ensures that not a thing will be out of place. This spacious Lower Level adds tons of living space and functionality to the home.

With its spectacular vistas, open and airy floor plan, proximity to New York City, easy access to Midtown Direct train service, exceptional school district and convenience to fantastic shopping and restaurants, 23 Huron Drive is extraordinary and the perfect place to call home!





INSIDE & OUT

FIRST LEVEL

- Entry Foyer featuring hardwood floors, crown molding, baseboard molding, staircase to Second Level, flush mount light fixture, painted soothing gray
- Living Room featuring hardwood floors, fireplace with custom millwork mantle and stone surround, large picture window, shadow box moldings, crown molding, baseboard molding, painted soothing gray
- Dining Room featuring hardwood floors, inset ceiling, chair rail, crown molding, baseboard molding, large picture window, painted soothing gray
- Library featuring detailed wainscoting, recessed lighting, crown molding, 2 oversized windows, painted soothing gray
- Gourmet Chef's Kitchen featuring hardwood floors, cherry custom cabinetry including glass door cabinetry, granite countertops, oversized windows over sink wall, high end stainless steel appliances, stainless cooktop and hood, recessed lighting, Walk In Pantry, breakfast bar
- Breakfast Area featuring bay of floor to ceiling windows with panoramic views, 2 sets of double French doors out to Deck, chandelier, recessed lighting, crown molding, baseboard molding
- Family Room open to Kitchen Area featuring hardwood floors, Wet Bar with custom cabinetry including glass door cabinetry, oversized windows, recessed lighting, baseboard molding, crown molding
- Powder Room
- Laundry Area

LOWER LEVEL

- Walk Out Recreation Room featuring hardwood floors, recessed lighting, stone accent wall, door to backyard
- Office

- Storage Area
- Workshop
- 2 Car Garage

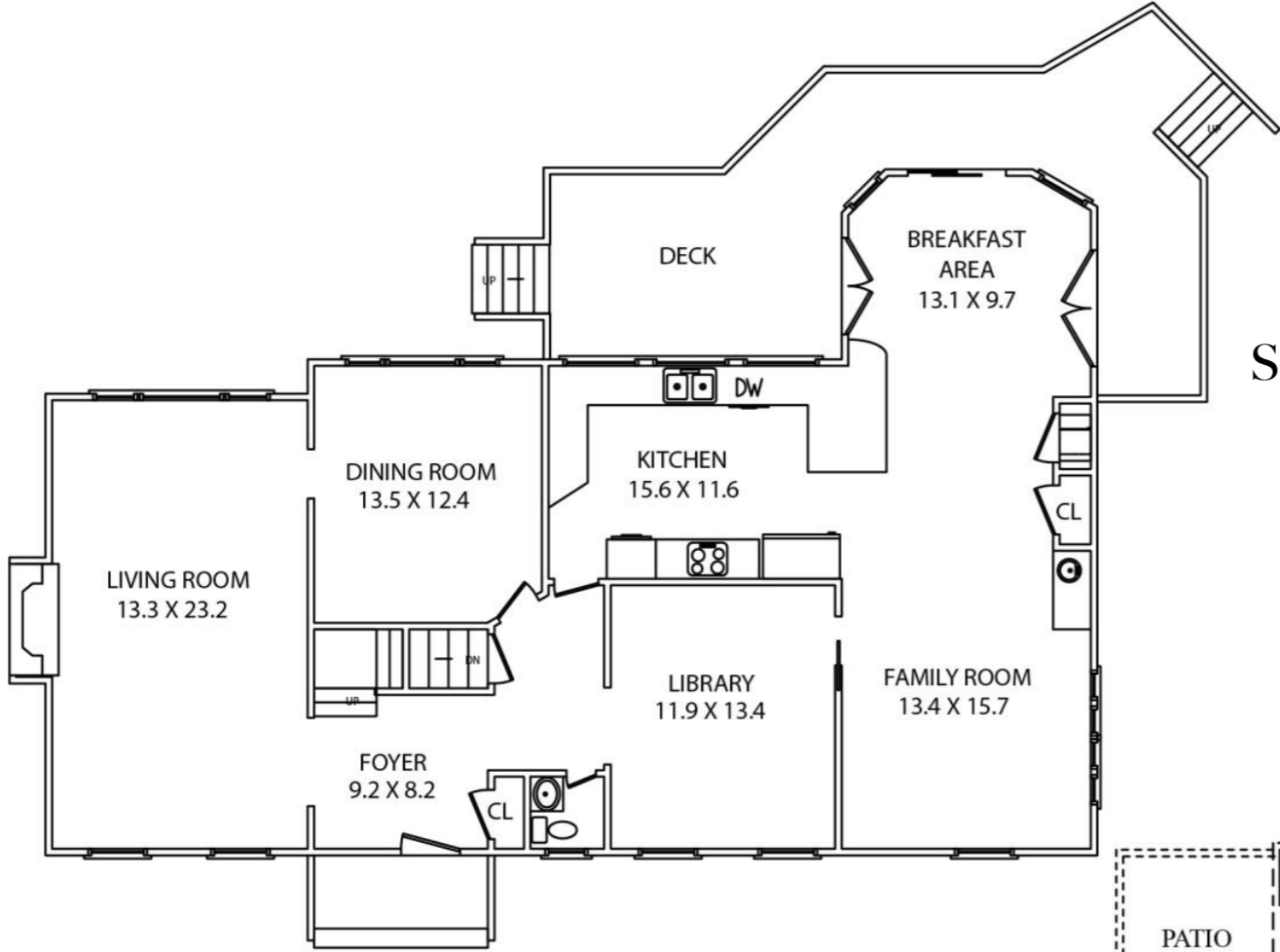
SECOND LEVEL

- Wood staircase to Second Level
- Master Bedroom Suite featuring hardwood floors, oversized windows, raised moldings, painted soothing gray, Sitting Room with hardwood floors, 10' vaulted ceilings, recessed lighting, architectural arched window, sliding French doors out to Balcony, Dressing Room, Master Bathroom featuring designer marble floor tile, oversized steam shower with glass door, double custom vanity with marble countertop, recessed lighting, oversized soaking tub, separate Vanity Area
- Bedroom #2 featuring hardwood floors, oversized windows at 2 exposures, baseboard moldings, Closet
- Ensuite Bedroom #3 featuring hardwood floors, oversized windows at 2 exposures, baseboard moldings, Closet, Full Hall Bath featuring floor and wall marble tiling, pedestal sink, glass door shower, crown molding
- Bedroom #4 featuring hardwood floors, oversized windows at 2 exposures, baseboard moldings, Closet
- Full Hall Bathroom featuring double vanity with marble countertop, shutters, recessed lighting, shower over tub

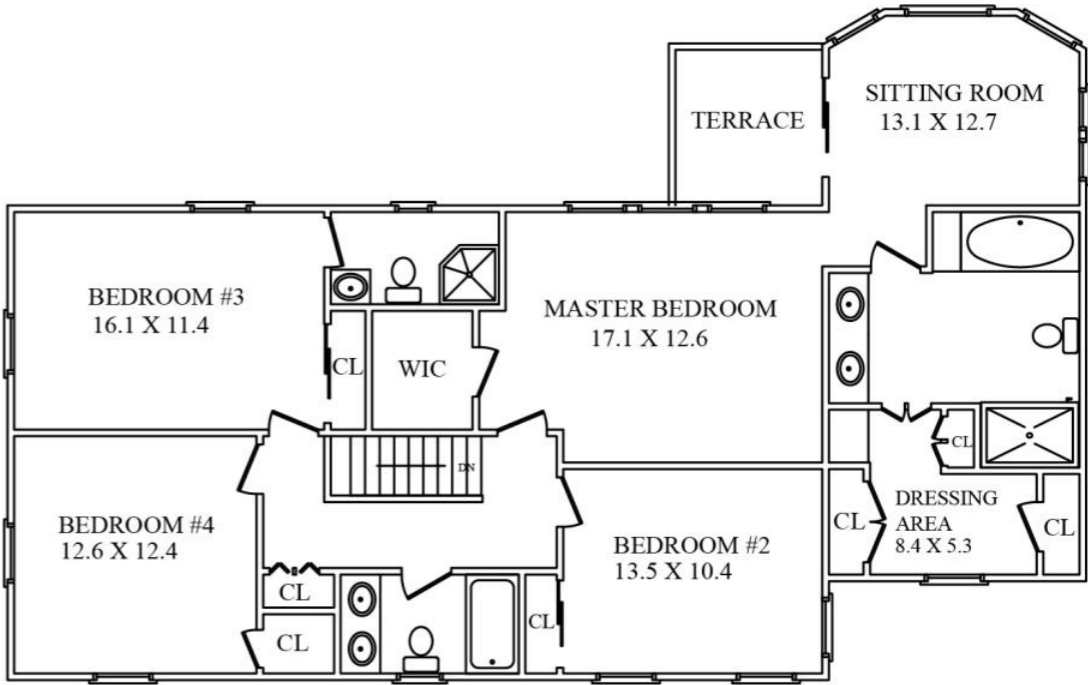
BACKYARD/LANDSCAPING

- Nearly $\frac{1}{2}$ Acre
- Wrap Around Deck overlooking breathtaking ridge
- 2 Bluestone Patios
- Meticulously landscaped gardens with mature trees, blooming perennials and tons of privacy
- Magical stepping stone paths and stone walls

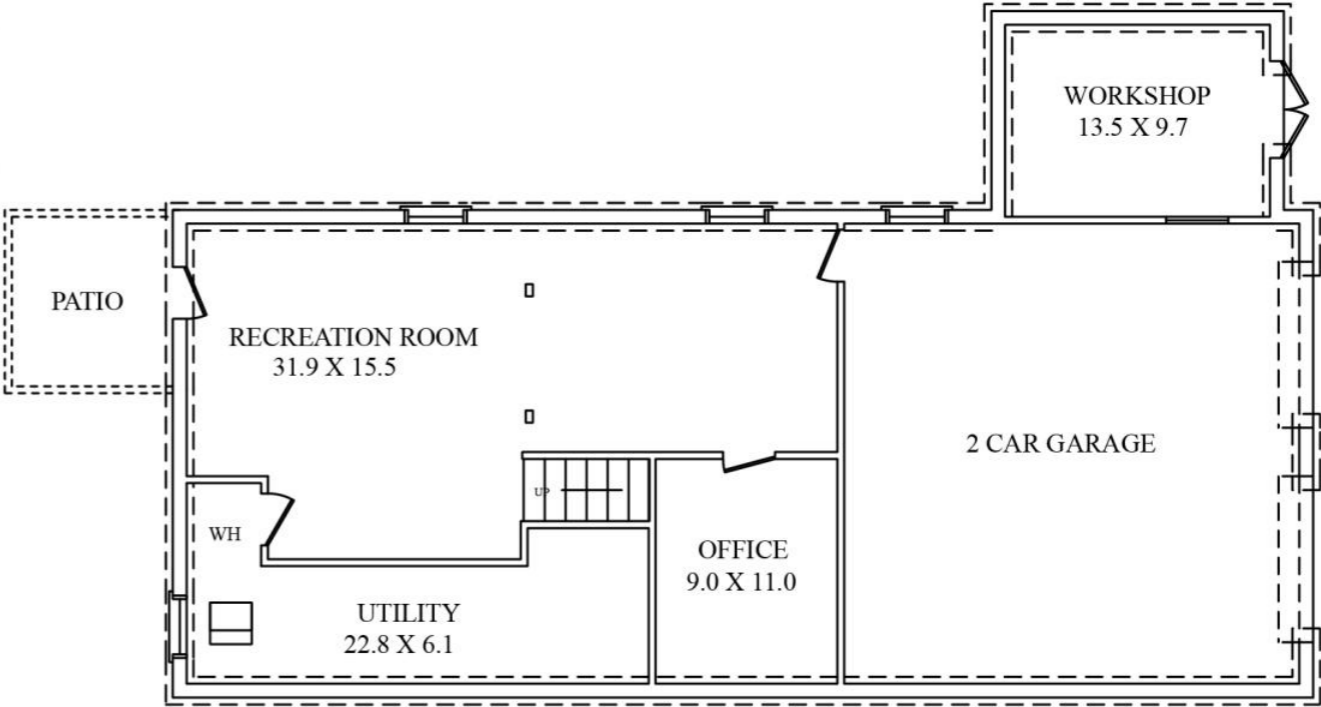
THE FLOORPLAN



FIRST LEVEL



SECOND LEVEL



LOWER LEVEL

NOT TO SCALE - This floor plan is provided for illustration purposes only.
Room positions and dimensions are approximate and should be independently measured for accuracy

