



36 HADDONFIELD ROAD  

---

SHORT HILLS, NJ





Welcome to 36 Haddonfield Road! Move right in to this stunning 5 Bedroom, 4.5 Bath Dutch Colonial beautifully renovated from top to bottom. With an exceptional location (Short Hills' prestigious Knollwood neighborhood) and just steps from downtown Millburn restaurants and shopping, Direct Train to NYC and top-rated schools, this house cannot be missed!





Curb appeal abounds as you drive up to this picture perfect home with a warm stone exterior, regal pillars flanking a delightful covered entry and a professionally landscaped front yard. Enter through the welcoming front door and you know this is not your ordinary Short Hills home. Move easily into the sun-drenched Dining Room with gleaming hardwood floors, deep moldings and two French doors leading out to an ethereal Covered Bluestone Patio. This magical space, with a breezy ceiling fan and beadboard ceiling, is the perfect spot to unwind at the end of the day or to enjoy pre-dinner cocktails with friends. Curl up with a book in the graceful Living Room where the outstanding custom moldings continue and the light pours in. Any chef is sure to be impressed by the out of this world Gourmet Chef's Kitchen. Custom, creamy white cabinetry, a huge two-tiered island with seating for three, granite countertops and a professional Wolf oven/range are the best in form and function. Chic farmhouse pendant lights, tons of cabinetry and a Walk In Pantry make the kitchen even better. Breakfast is served in the light-filled Breakfast Area with a bay of windows, a built in banquette and breathtaking views of the lovely backyard. The Kitchen is fully open to the exquisite Family Room featuring a gorgeous coffered ceiling, a warm and inviting stone fireplace and sliding French doors out to a fabulous Patio, perfect for outdoor entertaining. A custom Dry Bar is ideal for mixing drinks for friends. A well-appointed Mud Room, with a Built In Desk/Homework Area, Powder Room and 2 Car Garage round out the First Level.











When it's time to retire for the evening, the stately staircase leads you up to the Second Floor Landing. Luxury abounds in the breathtaking Master Bedroom Suite with its own fireplace, a vaulted ceiling and two Walk In Closets. The serene Master Bathroom really brings the wow factor with a dramatic vaulted ceiling with wood beams, fully custom cabinetry/vanity, marble throughout, and a dreamy soaking tub. Three additional large-sized bedrooms are steeped in sunlight and include generous closets (1 is ensuite). The Full Hall Bath aims to please with a large custom vanity, quartz countertops and chic tile. Finally, laundry is a pleasure with a convenient second floor Laundry Room. Looking to relax? Don't miss the Second Floor Balcony which is the perfect spot to unwind. Walk up a few steps to the Third Level to find an enormous room that is the perfect spot for your Home Office and/or Children's Playroom. And just when you thought you couldn't be more impressed, prepare to be amazed by the beautiful Lower Level. The Lower Level boasts a gorgeous Recreation/Play Room with plenty of room for movie watching, children's play and game night. A fifth Bedroom can easily accommodate an au pair or extended family, affording privacy with its own separate Full Bathroom. Tons of storage space means that all clutter will be neatly tucked away. 36 Haddonfield is an incredible value and a great opportunity to become part of a community just minutes from Blue Ribbon schools, NYC transportation, luxury shopping and downtown Millburn.

# I N S I D E & O U T

## FIRST LEVEL

- Entry Foyer featuring hardwood floors, wainscoting, staircase to Second Level, recessed lighting, Double Door Closet, crown molding, French door to Lower Level
- Living Room featuring hardwood floors, windows at 2 exposures, baseboard molding, crown molding, recessed lighting
- Dining Room featuring hardwood floors, recessed lighting, baseboard molding, crown molding, double windows, 2 French doors to Covered Porch
- Gourmet Chef's Kitchen featuring hardwood floors, custom wood cabinetry including glass door cabinetry, open shelving, granite countertops, tile backsplash, pot filler, oversized island with seating for 2 - 3, tray ceiling, farmhouse style pendant lighting over island, recessed lighting, sconces, farm sink, Wolf oven/range, built in stainless microwave, fully integrated refrigerator/freezer, dishwasher, custom hood with decorative tile backsplash, baseboard molding, crown molding
- Breakfast Room with built in banquette, lantern and bay of windows
- Walk In Pantry/Coffee Bar featuring custom cabinetry including glass door cabinetry, granite countertops, tile backsplash, refrigerator
- Family Room featuring hardwood floors, fireplace with custom millwork mantle and stone surround, coffered ceiling, Dry Bar with custom cabinetry, beverage refrigerator, granite countertops, tile backsplash, sliding French doors to backyard, recessed lighting, baseboard molding, crown molding
- Mud Room featuring custom built in Desk Area with open and concealed storage, custom built in bench with storage, baseboard molding, crown molding, door to Garage
- Powder Room featuring wood look flooring, wainscoting, vanity with bead board detail, quartz countertop, 2 light sconce over sink, baseboard molding, crown molding
- 2 Car Garage

## SECOND LEVEL

- Staircase with wainscoting to Second Level
- Second Level Landing featuring hardwood floors, chair rail, crown molding, recessed lighting, vaulted ceiling with architectural circular window
- Master Bedroom Suite featuring hardwood floors, vaulted ceiling, ceiling fan/light fixture, recessed lighting, baseboard molding, crown molding, custom woven shades, custom built in fireplace with stone surround and custom built in adjacent shelving, 2 Walk In Closets with custom storage
- Master Bathroom featuring marble tile flooring mosaic inlay, vaulted ceiling with wood beams and turret, custom wood double vanity with upper and lower storage, soaking tub, chandelier, sconces, frameless glass door shower with seat and marble tile surround, separate room for toilet
- Balcony Off Second Floor Landing

- Bedroom #2 featuring hardwood floors, recessed lighting, flush mount light fixture, baseboard molding, Walk In Closet
- Bedroom #3 featuring hardwood floors, recessed lighting, chandelier, baseboard molding, Double Door Closet
- Full Hall Bathroom featuring tumbled look floor tile with mosaic tile border, custom double vanity with quartz countertop, built in linen storage, shower over tub with tile surround, recessed lighting, crown molding, baseboard molding
- Ensuite Bedroom #4 featuring hardwood floors, vaulted ceiling, recessed lighting, chandelier, baseboard molding, Double Door Closet, Full Bathroom featuring wood look tile flooring, vanity with quartz countertop, glass door shower with tile surround, baseboard molding, 2 light sconce, fan/light
- Hidden Laundry Room featuring tile flooring, custom cabinetry, front loader washer and dryer

## THIRD LEVEL

- Huge Office/Playroom featuring double French doors at entry, hardwood floors, arched ceiling, recessed lighting
- Utility/Attic storage

## LOWER LEVEL

- Recreation Room featuring hardwood floors, recessed lighting, baseboard molding, decorative pillars, chalk wall, Storage Closets
- Storage/Utility Room
- Step down to a second Lower Level
- Bedroom #5/Guest Suite featuring hardwood floors, recessed lighting, baseboard molding, 2 Double Door Closets
- Full Bathroom featuring tile flooring, pedestal sink, glass door shower with tile surround, recessed lighting, baseboard molding, double door Linen Closet, recessed lighting

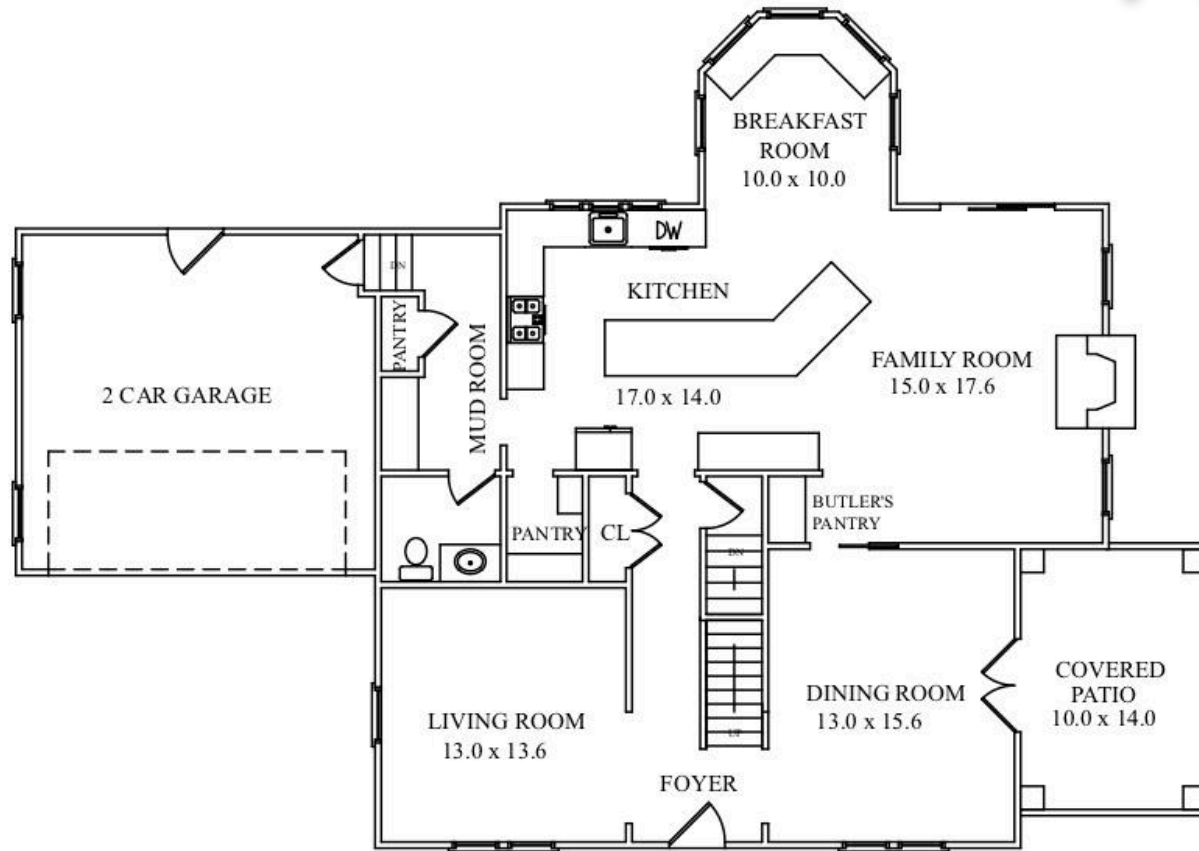
## FRONT/BACKYARD

- Covered front entry, stone and clapboard exterior
- Covered Porch on side of house featuring bluestone flooring, ceiling fan/light fixture, bead board ceiling, recessed lighting
- Rear Paver Patio with knee wall
- Private, flat grassy yard with privacy plantings
- Stone pathways

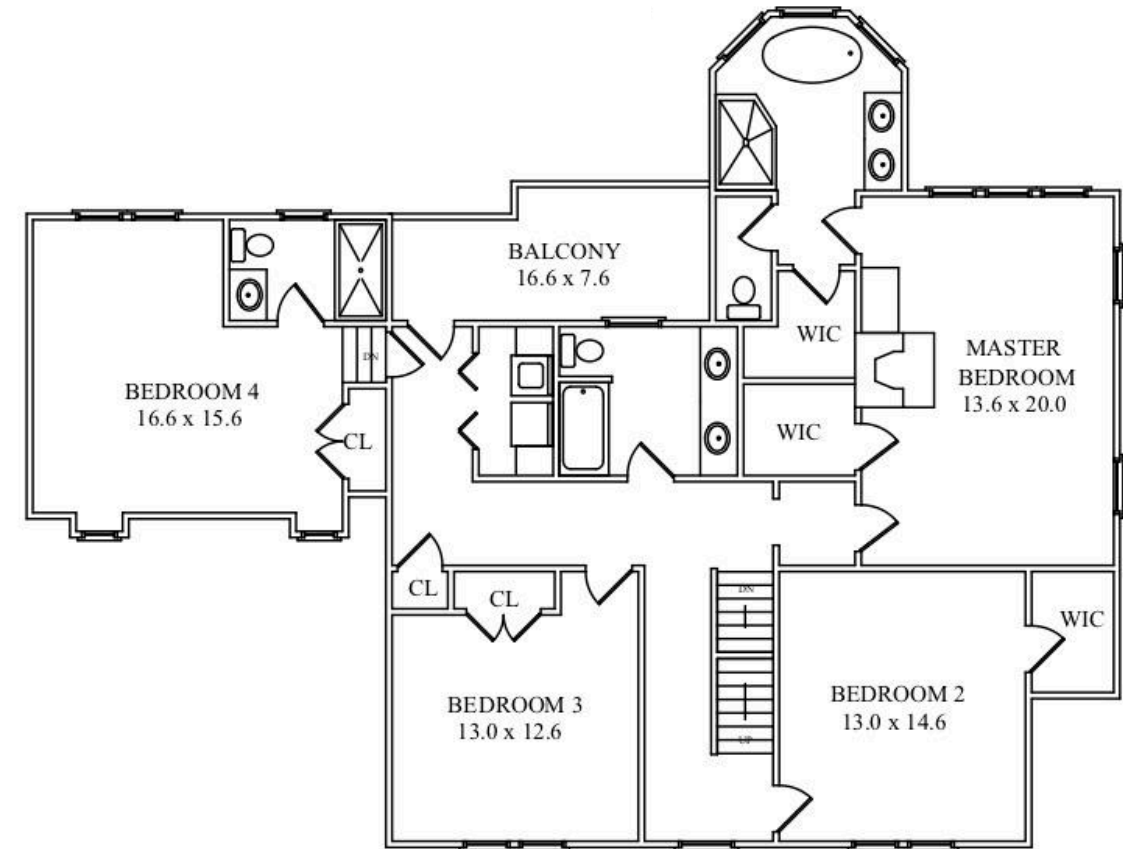
## ADDITIONAL FEATURES

- Painted soothing hues throughout

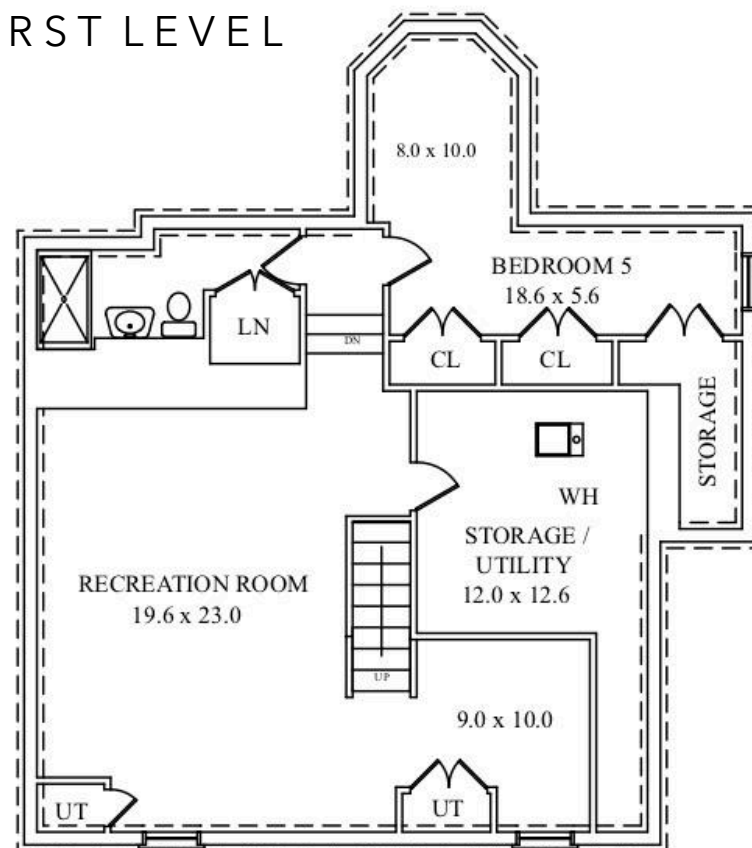
# THE FLOORPLAN



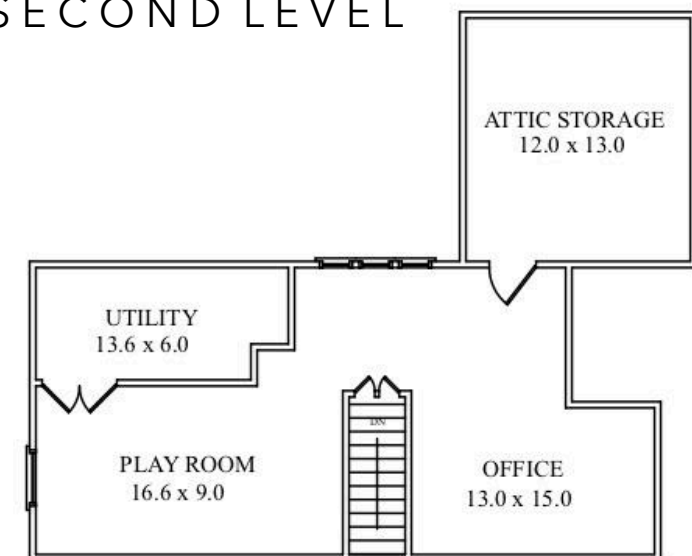
FIRST LEVEL



SECOND LEVEL



LOWER LEVEL



THIRD LEVEL

NOT TO SCALE - This floor plan is provided for illustration purposes only.  
Room positions and dimensions are approximate and should be independently measured for accuracy.



