

381 GROVE ROAD | SOUTH ORANGE, NJ

kw PREMIER
PROPERTIES
KELLER WILLIAMS

Each Keller Williams office is individually owned and operated.

sueadler 
THE #1 KELLER WILLIAMS TEAM IN NEW JERSEY team

Sitting majestically in South Orange's historic Montrose neighborhood, 381 Grove Road is a rare opportunity for the discerning buyer seeking architectural magnificence, craftsmanship and an ideal setting just minutes to Midtown Direct Train, Blue Ribbon schools, excellent restaurants, shopping and all downtown South Orange has to offer.





The Dining Room flows easily into the Chef's Gourmet Kitchen, with custom Crownpoint shaker style cabinetry, honed marble countertops, Wolf/Sub Zero appliances & a delightful Breakfast Room which soaks in the outdoors. So much storage, 2 Franke sinks, a custom island & bead board accent detail make the kitchen extraordinary. The Kitchen flows seamlessly to the Rear Porch & Rear Patio that really bring the wow factor. A huge bluestone Patio, with room for dining & lounging, & a sublime backyard mean that your house will be ground zero for outdoor entertaining & play. Rounding out the First Floor is a chic Powder Room.

Follow the property's graceful stone walkway & you know you have arrived somewhere exceptional. Meticulous landscaping & blooming perennials abound as you arrive at this magnificent 5 Bedroom, 4 & 1/2 Bathroom Colonial Revival complete with cheery red double doors, charming shutters, a regal covered entry & gorgeous windows overlooking the lush front yard.

The striking front entrance is graced by original double entry doors with an architectural fan-shaped transom. Enter through the Entry Vestibule which leads to the elegant Foyer & take in the high ceilings, exquisite stainless glass, eye-popping light fixture & stunning staircase to the Second Level. Impeccable craftsmanship, superior moldings & timeless architectural details are everywhere you turn. The front to back Living Room will take your breath away with its remarkable fireplace & magnificent windows with on-trend black trim. Prepare to be impressed by the Family Room with two sets of double French doors at entry, stunning rustic beams, custom built ins & a custom Wet Bar with a Waterworks copper sink. Windows at three exposures allow the light to pour in & overlook the park-like property. Whether it's game night or movie watching, the Family Room is the perfect spot to relax. Ready to host a dinner party? You simply cannot find a better venue than the Formal Dining Room. The ethereal fireplace & board & batten paneling are breathtaking focal points sure to make all your gatherings special.





When it's time to retire for the evening, the stately staircase leads you to a second floor landing with an exquisite bay of windows & TONS of storage/closet space so that everything will be neatly tucked away. Luxury & privacy abound in the sophisticated & well-designed Master Bedroom Suite featuring a custom built Double Door Closet, its own Dressing Room & a magical Sun Porch/Office. The spa-like Master Bathroom exudes relaxation with basket weave marble tile throughout, Waterworks fixtures, a large glass door shower & a custom Crownpoint built in cabinet with marble countertop. Bedrooms 2 & 3 are sundrenched & include cedar lined Walk In Closets. The gracious & open staircase takes you to the Third Level with spacious Bedrooms 4 & 5 & a tasteful Full Hall Bath.

& there's more...The Lower Level, with its fabulous Recreation Room, with a cool natural wood bar & fantastic Kitchenette/Wet Bar, means you are sure to host your share of movie nights & sports watching with friends. An incredible "walk out" Mudroom, teeming with custom storage, & a charming Laundry Room, with a cool barn door, make the Lower Level even better. A Guest Room & a tasteful Full Bath are the perfect spot for visiting guests or an au pair. Whether it's movie watching, card games, hosting guests or children's art projects, the Lower Level adds terrific functional space.

381 Grove Road's architectural magnificence makes it a dream home in every way. Just minutes to Blue Ribbon schools, NYC transportation, luxury shopping & downtown South Orange, this is the perfect place to call home.

I N S I D E & O U T

FIRST LEVEL

- Original front glass double doors with arched fanned transom
- Entry Vestibule featuring Vermont slate flooring, antique bell jar light fixture, high ceilings, French door with stained glass sidelites to Entry Foyer, baseboard molding
- Front to Back Entry Foyer featuring oak hardwood floors (throughout), original archways with original moldings, stained glass colonial revival style light fixture, stained glass colonial revival triple sconce with amber shades, baseboard molding, crown molding, staircase to Second Level, Coat Closet, French door to backyard
- Front to Back Living Room featuring hardwood floors, original fireplace with original custom millwork mantel and brick surround, baseboard molding, crown molding, picture windows at front rear with chic black trim, 2 sets of French double doors to Family Room
- Family Room featuring terra cotta tile floor in herringbone pattern, original rustic wood ceiling beams, baseboard molding, crown molding, windows with black trim at 3 exposures, 2 ceiling fans, paneled accent wall, custom built ins with open and concealed storage, custom built in Wet Bar with Waterworks copper bar sink and faucet
- Dining Room featuring hardwood floors, fireplace with original custom millwork mantle and brick surround, board and batten wall paneling, chandelier, oversized windows with black trim, baseboard molding, crown molding, swinging door to Kitchen
- Gourmet Chef's Kitchen featuring Vermont slate stone flooring, Crownpoint custom shaker style cabinetry in natural wood, glass door cabinetry, Gioia honed marble countertops, white crackled subway tile backsplash, Franke stainless sink with Franke wall mount nickel faucet, custom island with storage and Franke prep sink with Franke nickel faucet, disposals in both sinks, overhead Enclume pot rack, Sub-Zero/Wolf high-end stainless package including 4 burner oven/range with griddle, Kitchen Aid stainless dishwasher, Vent A Hood stainless hood, recessed lighting, Breakfast Room with bead board wainscoting and windows at 3 exposures, designer pendant light chandelier, French door to covered Rear Porch, Marvin true divided light windows
- Second Staircase with lower Dutch door, bead board wainscoting
- Rear hallway with lower Dutch door, open to Lower Level
- Powder Room with original ivory and black hexagonal floor tile, bead board walls, original corner sink, shelf

SECOND LEVEL

- Staircase with custom designer runner to Second Level, staircase landing with bay of architectural windows, door to Second Staircase
- Second Floor Landing featuring hardwood floors, pendant star light fixture, sconce, baseboard molding, multiple Storage/Linen Closets (1 cedar lined, 2 double doors have built in drawers and shelves)
- Master Bedroom Suite featuring hardwood floors, chandelier, baseboard molding, Double Door Closet, Dressing Room with custom built in shelving and window seat, double French doors to Sun Porch/Office featuring seagrass carpeting, windows at 3 exposures, baseboard molding
- Master Bathroom featuring basket weave marble floor tile, subway tile wainscoting with marble tile border, Crownpoint custom built in cabinetry with marble countertop, glass doors above and drawers below, custom glass door shower with subway tile surround, semi flush mount light fixture, flush mount light/fan in shower, sconces, original pedestal sink, medicine cabinet, Waterworks fixtures, custom radiator cover,
- Bedroom 2 featuring hardwood floors, built in book shelf, cedar lined Walk In Closet, baseboard molding, windows at 2 exposures
- Bedroom 3 featuring hardwood floors, ceiling fan, cedar lined Walk In Closet, baseboard molding, windows at 2 exposures
- Full Hall Bath featuring hexagonal floor tile, tile wainscoting, medicine cabinet, pedestal sink, sconces, tub/shower combination with glass door, semi flush mount light fixture

THIRD LEVEL

- Open staircase to Third Level with custom designer runner
- Third Floor Landing featuring hardwood floors, sconces, baseboard molding, storage Closet
- Bedroom 4 featuring hardwood floors, vaulted ceiling, ceiling fan, baseboard molding, Closet
- Full Hall Bath featuring wall mount sink, claw foot tub, vaulted ceiling, 2 light sconce
- Bedroom 5 featuring hardwood floors, vaulted ceiling, ceiling fan, baseboard molding, Closet

LOWER LEVEL

- Staircase to Lower Level, Dutch door at entry
- Recreation Room featuring wood look floor tile in herringbone pattern, recessed lighting, storage/utility closets, baseboard molding, built in bar area with natural wood bar top, Kitchenette/Wet Bar with custom built in cabinetry, quartz countertop, rustic wood open shelving, bar sink, GE stainless refrigerator/freezer
- Guest Room featuring wood look floor tile in herringbone pattern, recessed lighting, baseboard molding
- Mudroom featuring slate floor tile, built in bench with bead board accent wall with cubbies and hook storage, recessed lighting, natural wood ship lap accent wall, baseboard molding, door to outside
- Laundry Room featuring barn door at entry, slate floor tile, front loader washer and dryer with folding counter above, cabinet with utility sink, hanging storage, built in cabinet with stone look countertop
- Full Bath featuring tile flooring, subway tile with mosaic accent tile, tub/shower combination with tile surround, wall mount sink, sconce, flush mount light fixture
- French drains/sump pumps

FRONTYARD / BACKYARD

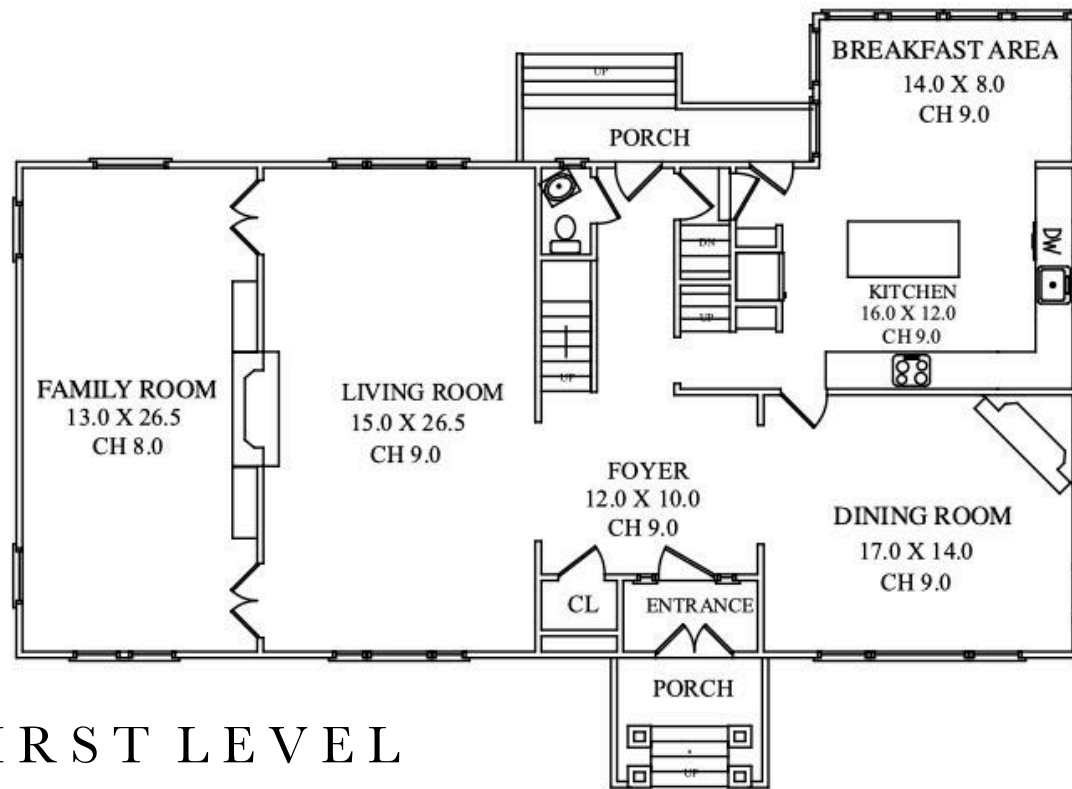
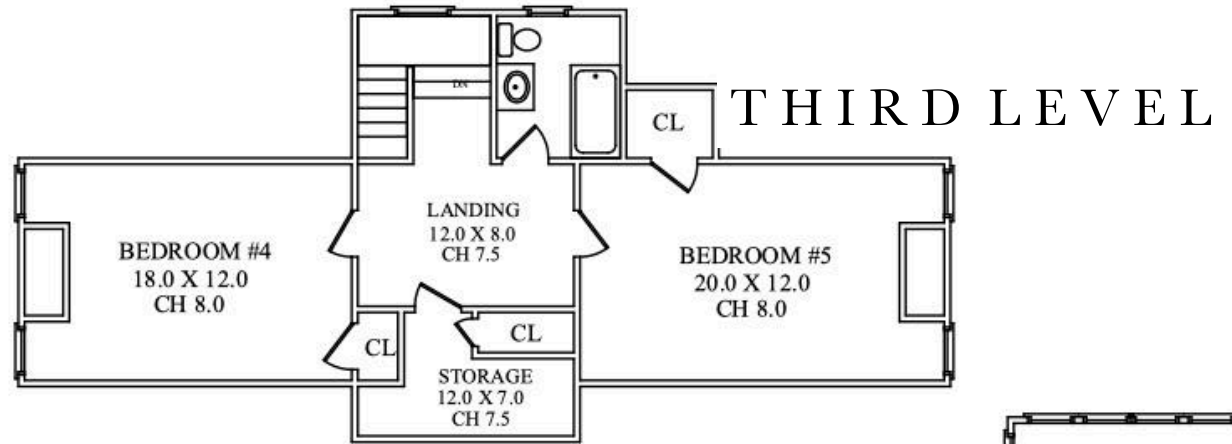
- Covered front entry with original double front doors
- Bluestone walkways flanked by award winning landscaping and blooming gardens
- Rear Porch
- Bluestone Patio with dining and entertaining area, cascading down to backyard
- Bluestone pathways
- 3 car detached garage with carriage style doors
- Flat grassy rear yard with professional landscaping
- Gravel area with firepit

ADDITIONAL FEATURES & UPGRADES

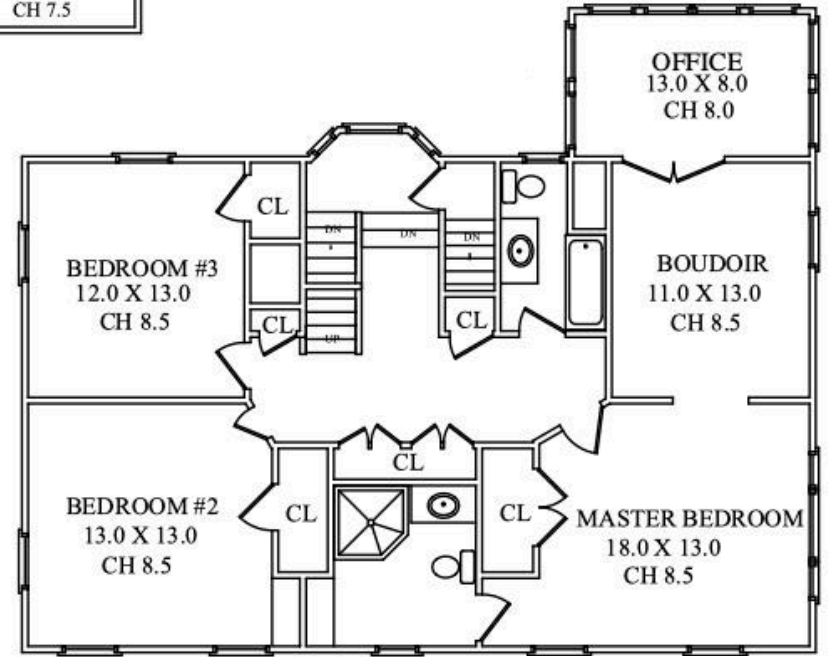
- Freshly painted throughout
- Original wood doors and hardware throughout
- Cedar shake roof



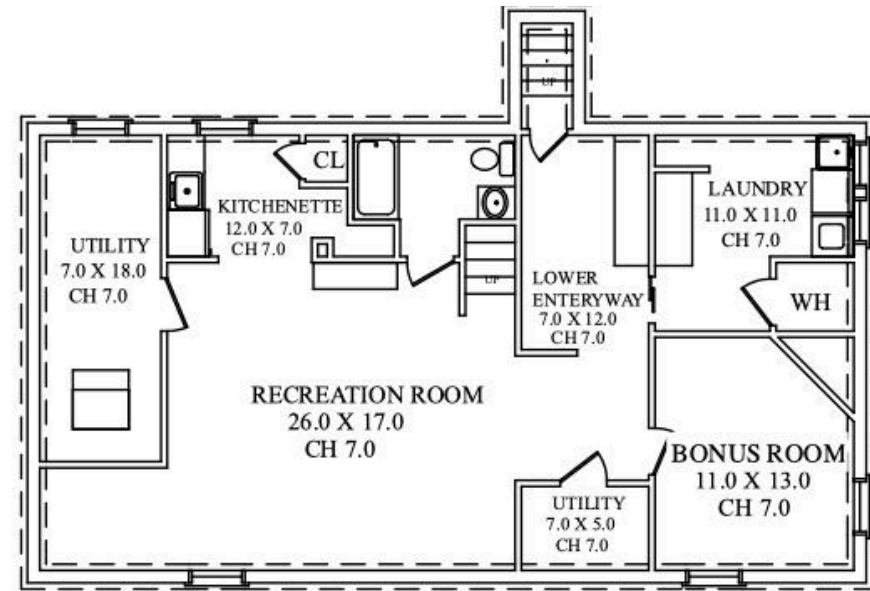
FLOORPLAN



FIRST LEVEL



SECOND LEVEL



LOWER LEVEL

NOT TO SCALE - This floor plan is provided for illustration purposes only.
Room positions and dimensions are approximate and should be independently measured for accuracy.



sueadler 
THE #1 KELLER WILLIAMS TEAM IN NEW JERSEY **team**

CELL: 973.936.9129
OFFICE: 973.376.0033 x101
info@sueadler.com
sueadler.com/381Grove

kW PREMIER
PROPERTIES
KELLERWILLIAMS®