

1 8 6 H A R T S H O R N D R I V E  

---

S H O R T H I L L S , N J





Welcome to 186 Hartshorn Drive! This estate-like 6 Bedroom, 6.5 Bath custom home has it all. With an open and airy floor plan, fabulous entertaining spaces and park-like property, you will never want to leave this extraordinarily designed home.





Drive up to 186 Hartshorn and take in the elegant craftsmanship and lovely property, a vision of perfect proportion and detail. The captivating front entrance includes a covered Front Porch with a rich copper roof and a stately front door graced by sidelites. Enter the spacious and elegant 2-story Entry Foyer and prepare to be overwhelmed by the sheer elegance, light and scale of this home. The Entry Foyer includes a gracious curved staircase, 2 Coat Closets and gorgeous views of the Living and Dining Rooms beyond.

Entertain your guests or curl up with a book in the elegant Living Room featuring regal wainscoting, hardwood floors and elongated windows where the light pours in. Proceed into the nearby formal Dining Room with magnificent moldings, wainscoting, a statement chandelier with a decorative ceiling medallion and plenty of space to host gourmet dinners. The Dining Room connects easily to the Butler's Pantry that is ideal for mixing cocktails for your guests.

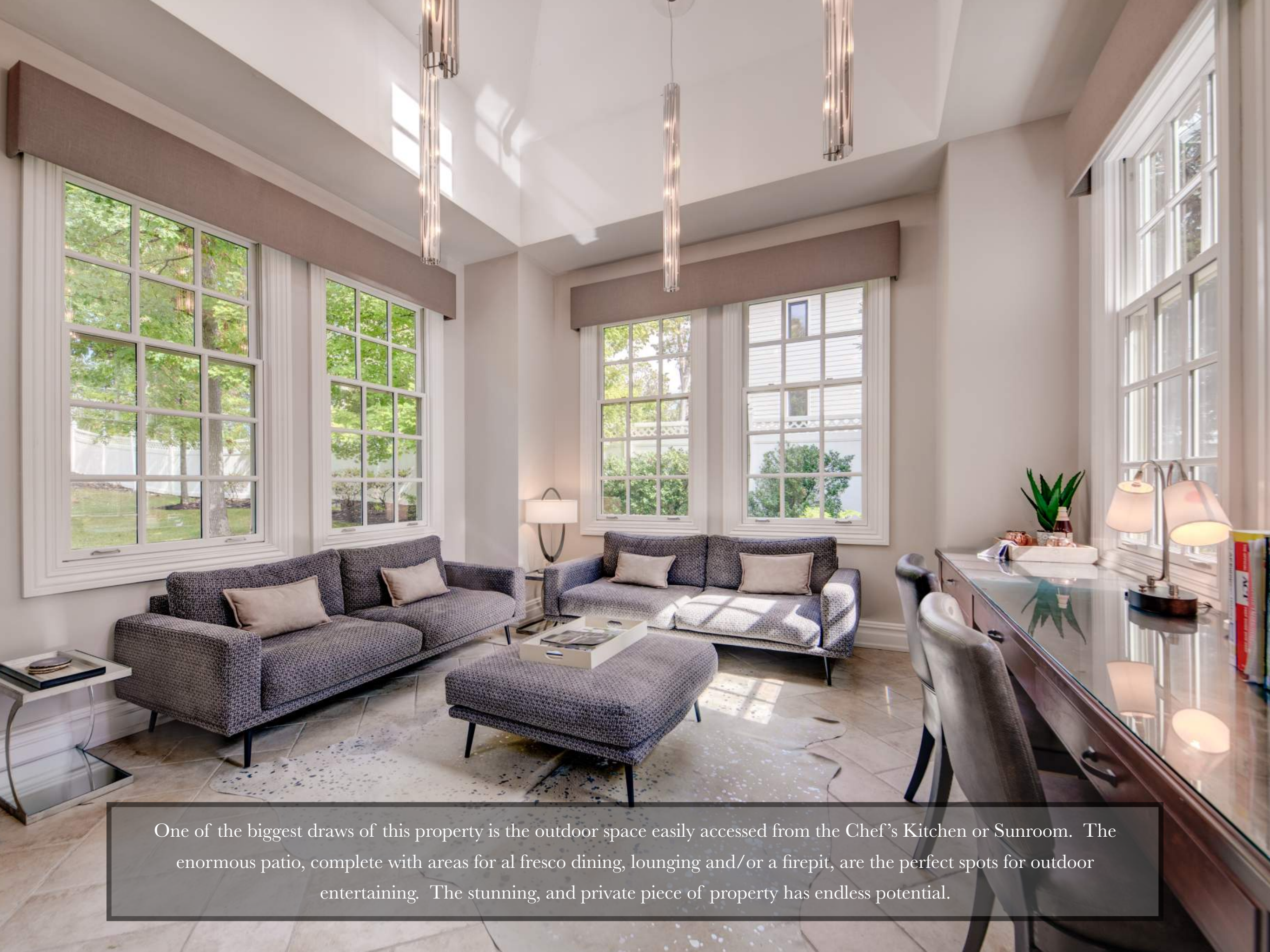




Flow easily into the dazzling Gourmet Chef's Kitchen where custom wood cabinetry with an enormous custom island, granite countertops and commercial-style Sub-Zero/Wolf appliances make this any chef's dream. Take in the backyard view in the Breakfast Area with a French door leading out to the spacious patio. The breathtaking Family Room, with its floor to ceiling stone fireplace and an enormous custom built in, is the perfect spot for family gatherings or entertaining friends. Working from home is a dream in the stately Office featuring huge windows at three exposures and a French door out to the gorgeous backyard. Rounding out the First Floor is a luxurious Powder Room, Mudroom, 3-car Garage and an ensuite Guest Bedroom.







One of the biggest draws of this property is the outdoor space easily accessed from the Chef's Kitchen or Sunroom. The enormous patio, complete with areas for al fresco dining, lounging and/or a firepit, are the perfect spots for outdoor entertaining. The stunning, and private piece of property has endless potential.









When it's time to retire for the evening, the gorgeous staircase, beaming with natural light from the dramatic second floor vaulted ceiling, leads you to the second floor with four spacious bedrooms (each with its own bath!). Luxury abounds in the alluring Master Bedroom with an incredible vaulted ceiling with a stunning floor to ceiling window, a Sitting Room/Office, two huge Walk In Closets with custom storage and a luxurious Master Bath complete with marble tiling, frameless glass door shower, soaking tub and separate toilet.

Three additional large-sized bedrooms are steeped in sunlight and include Walk In Closets and on trend ensuite baths. Walk up the staircase to the Third Level to find an enormous Play Room/Tween Lounge, sure to be the perfect hangout/homework room for the kids. A spacious and convenient Laundry Room, with custom built in cabinetry, rounds out the Second Level.









And there's more...The enormous Lower Level adds tons of functional space to the home. A huge Exercise Room ensures you will always be in shape. Movie night is sure to be at your house with a luxurious Home Theatre rivaling any home in Hollywood. A spacious Guest/Au Pair Room, Full Bath and tons of storage round out the Lower Level.

Homes of this caliber do not come on the market every day. 186 Hartshorn is a dream home in every way. Just minutes from Blue Ribbon schools, NYC transportation, luxury shopping in Short Hills and downtown Millburn, this home is an absolute treasure.



# I N S I D E & O U T

## FIRST LEVEL

- 2-Story Entry Foyer featuring wood door with true divided lights, marble tile flooring with decorative inlay, chandelier, baseboard molding, curved staircase to Second Level, 2 Coat Closets, crown molding, Gallery Landing overlooking Foyer
- Living Room featuring hardwood floors, wainscoting, deep crown moldings, recessed lighting, oversized windows at 2 exposures
- Powder Room featuring tile flooring, wallpaper, washbasin sink with integrated stone sink and countertop, LED mirror, custom shades, baseboard molding
- Dining Room featuring hardwood floors, wainscoting, candelabra sconces, chandelier, custom ceiling medallion, speakers, oversized double window
- Butler's Pantry featuring hardwood floors laid on a diagonal, custom cabinetry including glass door cabinetry, granite countertops, tile backsplash, baseboard molding
- Gourmet Chef's Kitchen featuring hardwood floors laid on a diagonal, crisp white shaker style cabinetry including glass door cabinetry, warm wood 2-tier island with seating for 4, granite countertops, subway tile backsplash, recessed lighting, 2 sinks, stainless steel full size Sub Zero individual refrigerator and freezer, wine refrigerator, Wolf stainless 6 burner oven/range, stainless hood, 2 dishwasher drawers, 2nd dishwasher, built in stainless wall oven, built in stainless microwave
- Breakfast Room featuring hardwood floors, chandelier, oversized picture window overlooking backyard, floating shelves, baseboard molding, French door to backyard
- Sunken Family Room featuring hardwood floors, floor to ceiling stone fireplace, custom built in entertainment center with open and concealed storage, recessed lighting, baseboard molding, crown molding, oversized windows
- Office featuring stone tile flooring, vaulted ceiling, pendant lighting, oversized windows at 3 exposures, French door to Patio, baseboard molding
- Mud Room featuring hardwood floors laid on a diagonal, 2 oversized Closets, recessed lighting, baseboard molding, deep crown moldings, door to Lower Level, door to 3 Car Garage, French door to side yard
- 3 Car Garage
- Bedroom #5 featuring hardwood floors, Closet, recessed lighting, baseboard molding, speakers

- Full Hall Bath featuring tile flooring with mosaic tile border, chic steel vanity with marble countertop, 2 sconces, recessed lighting, baseboard molding, frameless glass door shower with designer tile surround
- Rear staircase with designer runner

## SECOND LEVEL

- Second Floor Landing featuring hardwood floors laid on a diagonal, art niches with recessed lighting, baseboard molding, deep crown molding, flush mount light fixture, 2 Linen Closets
- Master Bedroom Suite featuring double doors at entry, hardwood floors, vaulted ceiling, architectural arched windows, baseboard molding, crown molding, ceiling fan/light fixture, recessed lighting, 2 Walk In Closets with custom shelving, drawers and hanging storage, 2 additional Double Door Closets, built in l-shaped storage area
- Master Sitting Room/Office featuring hardwood floors, tray ceiling, custom built ins with open and concealed storage, picture window, recessed lighting
- Master Bathroom featuring tile flooring, tray ceiling, 2 custom vanities with upper and lower storage and quartz countertops, chandelier, sconces, recessed lighting, tiled accent wall, soaking tub, glass door shower with tile surround, baseboard molding
- Laundry Room featuring tile flooring, custom built in cabinetry, utility sink, wallpaper, washer and dryer
- Ensuite Bedroom #2 featuring hardwood floors, ceiling fan/light fixture, plantation shutters, recessed lighting, crown molding, baseboard molding, Walk In Closet, Bath featuring tile flooring and wall, custom vanity with stone countertop, 3 light sconce, recessed lighting, shower over tub with tile surround and sliding glass door
- Ensuite Bedroom #3 featuring hardwood floors, ceiling fan/light fixture, wood blinds, recessed lighting, crown molding, baseboard molding, Walk In Closet, Bath featuring tile flooring, wallpaper, custom vanity with stone countertop, 3 light sconce, recessed lighting, shower with tile surround and sliding glass door
- Ensuite Bedroom #4 featuring hardwood floors, ceiling fan/light fixture, wood blinds, recessed lighting, crown molding, baseboard molding, Walk In Closet, Bath featuring tile flooring, custom wall to wall vanity with stone countertop, vanity/

makeup area, 4 light sconce, recessed lighting, shower with tile surround and sliding glass door

## THIRD LEVEL

- Open staircase with designer runner to Third Level
- Play Room/Lounge featuring carpeting, vaulted ceiling, recessed lighting, custom built in window seat, baseboard molding
- Multiple Storage Areas

## LOWER LEVEL

- Lower Level Landing featuring carpeting, drop ceiling with recessed lighting, baseboard molding
- Home Theatre featuring carpeting, completely custom moldings and cabinetry throughout, tiered leather seats, projector, screen, sconces, recessed lighting, built in entertainment storage
- Custom Exercise Room featuring carpeting, drop ceiling with recessed lighting, baseboard molding, custom mirrors, speakers, glass window opening to hall
- Bedroom #6 featuring carpeting, drop ceiling with recessed lighting, baseboard molding, 2 Closets
- Full Bathroom featuring slate floor tile, wall to wall custom vanity with marble countertop, drop ceiling with recessed lighting, baseboard molding, frameless glass door shower with designer tile surround, 3 light sconce over sink
- Utility/Storage Rooms

## BACKYARD

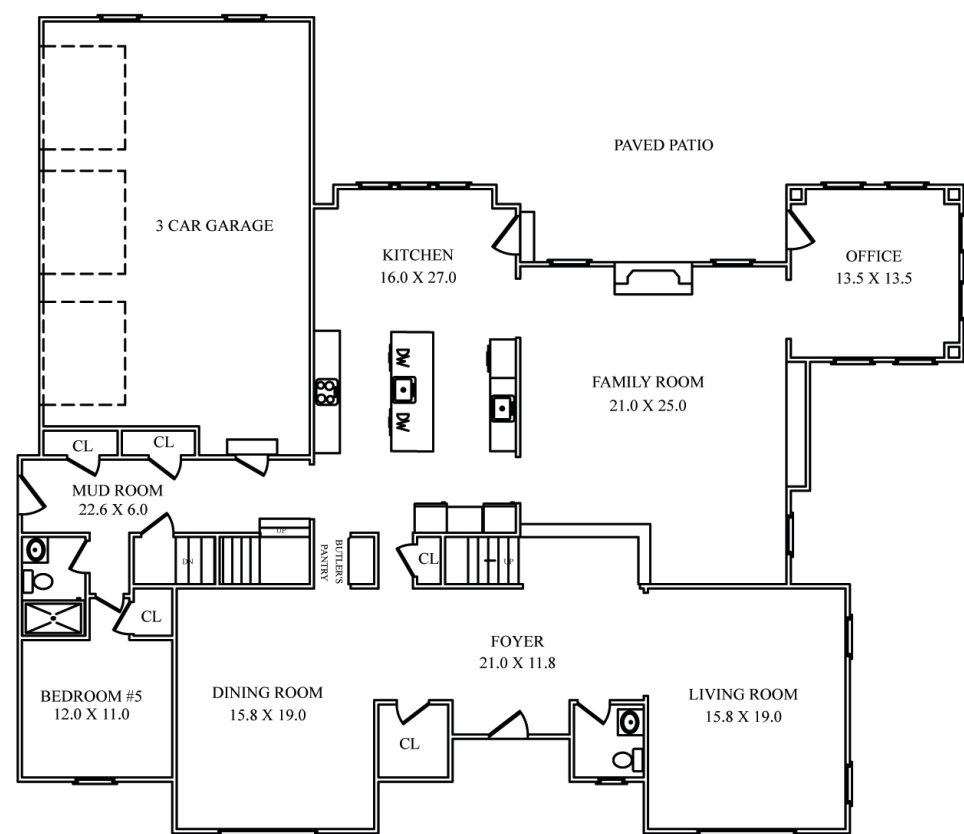
- .67 Acre
- Covered Front Porch with copper roof
- Professional landscaping including lush lawn, blooming perennials and mature specimen trees
- Paver Driveway with Belgian block border
- Paver Patio with room for dining and lounging
- HealthMate Hot Tub Grande Spa (7 Seater) with LED lighting, speakers and water feature
- Stone retaining walls and fencing
- Tiered beds and staircase to 2nd tier
- Hidden Trampoline

## ADDITIONAL FEATURES & UPGRADES

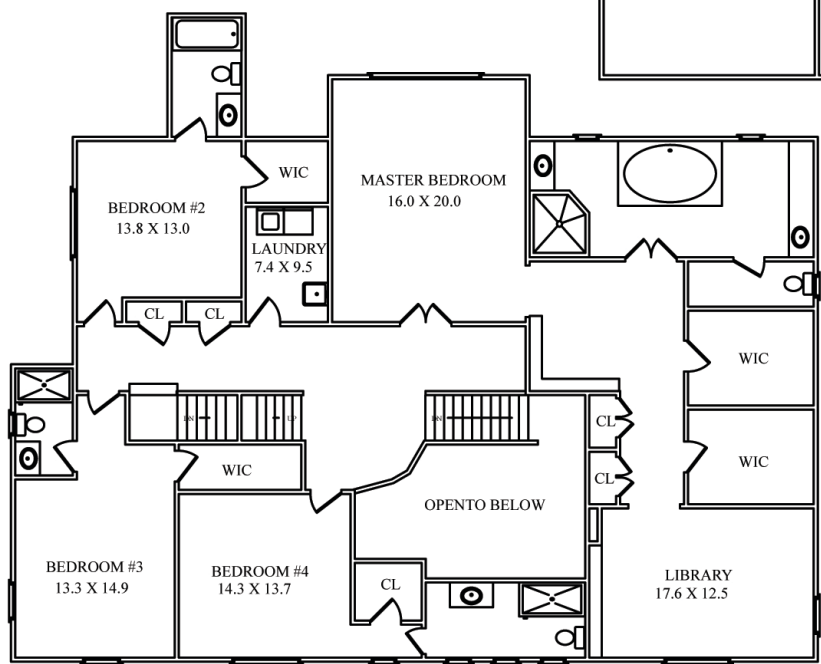
- Over 6,000 square feet
- Freshly painted soothing hues throughout
- Whole house built in Generac generator (2018)



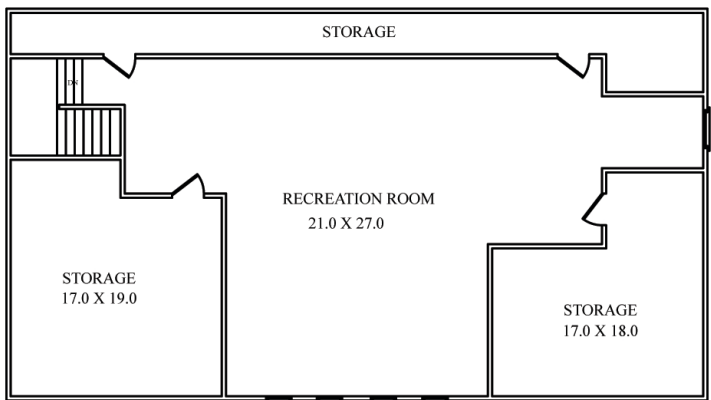
# THE FLOOR PLAN



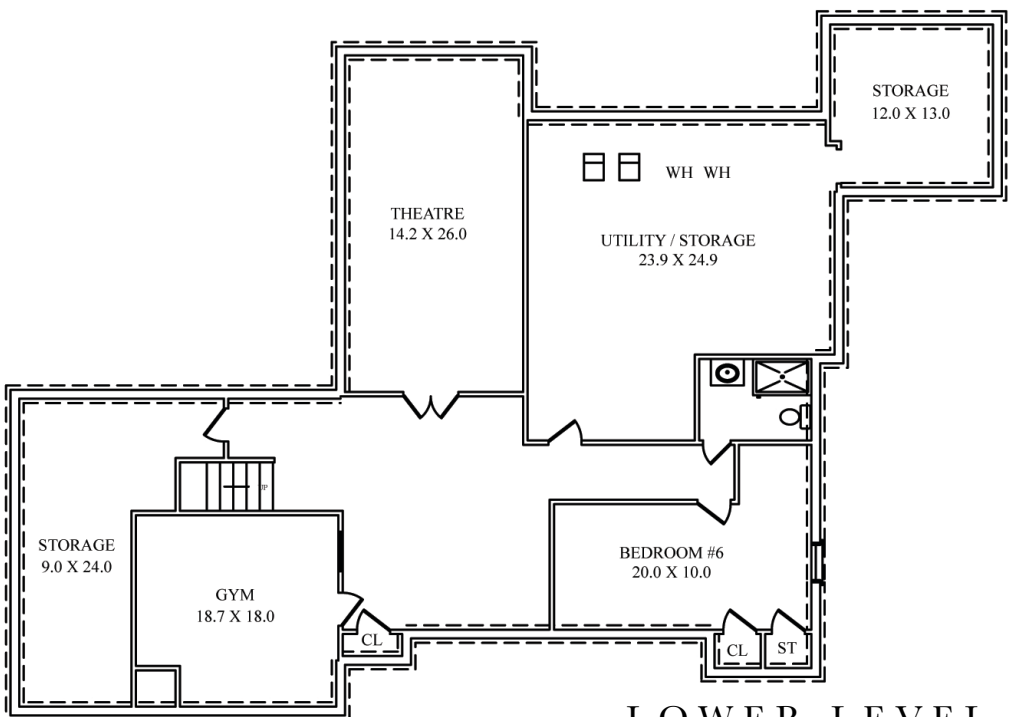
FIRST LEVEL



SECOND LEVEL



THIRD LEVEL



LOWER LEVEL

NOT TO SCALE - This floor plan is provided for illustration purposes only.  
Room positions and dimensions are approximate and should be independently measured for accuracy



