

Each Keller Williams office is individually owned and operated.



2715 PLAINFIELD AVENUE  
SCOTCH PLAINS, NJ





Welcome to 2715 Plainfield Avenue in Scotch Plains! This absolutely darling 4 Bedroom, 2½ Bath charmer in coveted Scotch Plains has it all! With sunny and bright rooms, the open and airy floorplan every buyer desires, the perfect mix of vintage charm (built in 1929) and modern amenities and a super family-friendly block, 2715 Plainfield is an absolute dream.

Stroll up and take in the home's beautiful façade with a covered front entry and distinct gables. Enter through the warm front door where you will arrive in an Enclosed Front Porch/Sun Room that has been transformed into a sunny and bright entry area. Soothing grays and windows at three exposures make for a delightful entry that opens via French doors to both the Foyer and Living Room. Enter the welcoming Entry Foyer with gleaming hardwood floors and a charming staircase to the Second Level. Cuddle up in the sun-drenched Living Room with a stunning classic wood burning fireplace and gleaming hardwood floors. Dinner parties are easy as the Living Room opens up to the gracious Dining Room where you will find a statement light fixture and windows at two exposures so that the light pours in. The Gourmet Chef's Kitchen is fully open to the Dining Room with gorgeous travertine floors, custom cabinetry with tons of storage, stainless steel appliances and plenty of counter space for preparing gourmet meals. A well-appointed Powder Room rounds out the outstanding First Level.







Ready to retire for the evening? The open and airy Second Level boasts two spacious bedrooms with hardwood floors and generous closets. An oversized Full Bath with a roomy double vanity, granite countertop and glass door shower rounds out this level. Walk up a few steps to the Third Level where you will find spacious Bedrooms 3 and 4 and an on trend Full Bath with a chic clawfoot tub.

And that's not all! The staircase to the Lower Level leads to an unfinished Lower Level with a Laundry Area and plenty of potential for a spacious Recreation Room and Exercise Area. Out back, a large Deck and flat backyard will offer hours of entertainment.

With its lovely neighborhood, close proximity to Scotch Plains/Westfield/Cranford's shopping and restaurants, top-notch schools and



# INSIDE & OUT

## FIRST LEVEL

- Sun Room/Enclosed Front Porch area featuring arched window door, painted soothing gray, baseboard molding, windows at 3 exposures, recessed lighting, hardwood floors, double French doors opening to Living Room, French door to Entry Foyer
- Hallway/Foyer area featuring hardwood floors, staircase to Second Level, recessed lighting, baseboard molding, wide archway to Living Room, painted crisp white, Coat Closet, door to rear area with door to Lower Level
- Living Room featuring hardwood floors, wood burning fireplace with custom millwork mantle and stone tile surround and hearth, recessed lighting, windows flanking fireplace, picture shelf, baseboard molding, painted soothing gray, large archway to Dining Room
- Dining Room featuring travertine tile flooring, pendant light fixture, recessed lighting baseboard molding, windows at 2 exposures, fully open to Kitchen
- Gourmet Chef's Kitchen featuring travertine flooring, custom wood cabinetry, laminate granite-look countertop, tile backsplash, stainless sink, stainless steel appliances including dishwasher, oven/range, built in microwave, refrigerator/freezer, recessed lighting, Pantry, door to backyard
- Powder Room featuring travertine flooring, pedestal sink, baseboard molding

## LOWER LEVEL

- Staircase to Lower Level, door to side yard
- Unfinished with tons of potential for Recreation Room and Exercise Area
- Utilities and storage
- Laundry Area with LG stainless front loader washer and dryer

## SECOND LEVEL

- Second Floor Landing featuring hardwood floors, picture ledge, staircase to Third Level, Linen Closet

- Master Bedroom featuring hardwood floors, recessed lighting, baseboard molding, Closet, windows at 2 exposures
- Master Closet (Separate Room) featuring hardwood floors, recessed lighting, baseboard molding, windows at 2 exposures, 2 Closets
- Bedroom #2 featuring hardwood floors, baseboard molding, Closet, wall shelving, double windows
- Full Hall Bathroom featuring tile flooring, glass door shower with tumbled tile surround, recessed lighting, double wood vanity with granite countertop, baseboard molding, crown molding

## THIRD LEVEL

- Third Floor Landing featuring vaulted ceiling, hardwood floors, flush mount light fixture, baseboard molding, eave storage
- Full Hall Bathroom featuring tile flooring, tile wainscoting with mosaic tile border, claw foot tub, pedestal sink, glass shelf, recessed lighting
- Bedroom #3 featuring hardwood floors, vaulted ceiling, recessed lighting, eave storage, Closet
- Bedroom #4 featuring hardwood floors, triple windows, baseboard molding, recessed lighting, eave storage, Closet

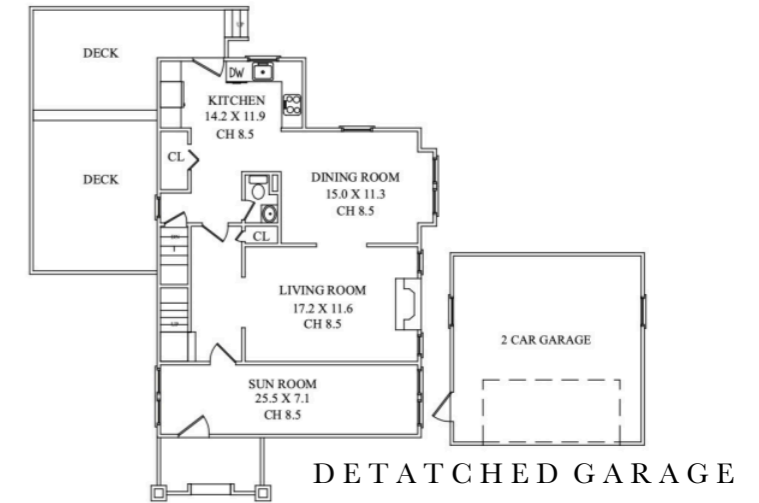
## FRONT / BACKYARD

- Covered front entry
- Brick front walkway
- Professional landscaping
- Deck for entertaining
- Flat yard for entertaining and play
- Detached Garage

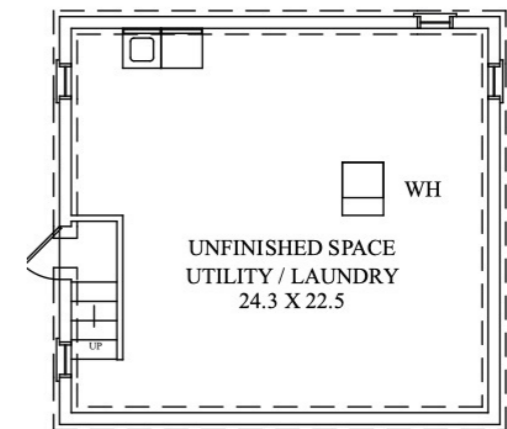
## ADDITIONAL FEATURES

- 2,000 square feet of living space
- Built 1929
- Extensively renovated 2004
- Original hardware with crystal knobs
- Painted soothing hues throughout
- Replaced hardwood floors
- New windows and doors in detached 2 car garage

# THE FLOOR PLAN



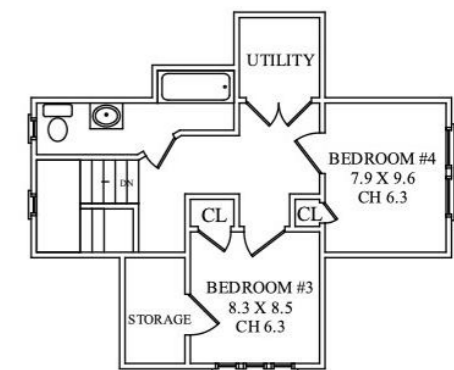
FIRST LEVEL



LOWER LEVEL



SECOND LEVEL



THIRD LEVEL

CELL: 973.936.9129

OFFICE: 973.376.0033 x101

EMAIL: info@sueadler.com

sueadler.com/2715Plainfield



All information deemed reliable but not guaranteed