

57 CYPRESS STREET
MILLBURN, NJ

Welcome to 57 Cypress Street,

a move-in ready and lovingly maintained 3 Bedroom, 3 Bath Split Level with a seamless open concept floor plan, 3 entertaining areas, in the heart of the sought-after Wyoming section. Across from Slayton Field Park with tennis courts, the home is in very short walking distance to top most rated (Great school ranking 10/10) Wyoming School. With the seamless open concept floor plan every buyer desire, a Gourmet Chef's Kitchen with tons of storage, Pella designer windows and doors, soothing paint colors and hardwood floors throughout, gorgeous private backyard, 57 Cypress is perfect in every way. Drive up the quiet, tree-lined street and enter through the warm, wood Entry Door and prepare to be amazed by this spectacular home. The sleek, well executed Living, Dining and Kitchen Areas are extraordinary in every way. Walls and hallways are left behind and replaced by an open and airy floor plan so your guests can enjoy a glass of wine and flow freely and easily through the relaxed and connecting interior spaces.



The Living Room is an entertainer's dream with gleaming hardwood floors and a stately gas fireplace with a brick surround. Elegant double French doors lead to the extraordinary Dining Room with a statement chandelier and plenty of room for a large table. The fabulous Gourmet Chef's Kitchen is outstanding with superb design maximizing so much storage. Custom wood cabinetry, including charming glass door cabinetry, stainless steel appliances and views of the bucolic backyard are just a few of the remarkable features of this room. A door from the Dining Room out to the backyard ensures complete ease for outdoor entertaining and play. Take a few steps down to the renovated light and airy Family Room featuring carpeting, chic natural wood wainscoting, plenty of sunlight, large Pella designer windows, and easy access to the Garage. This room is perfect for entertaining friends or movie night with the family. This level is completed by a tasteful Full Bath. Walk down a few more steps where you will find a fabulous Home Office or potential Au Pair Suite with sleek wood look floors. A Full Bath on this level ensures additional privacy. A convenient Laundry Room, Utility Room and Storage Room round out this level.



Ready to retire for the evening? Luxury abounds in the open and airy Master Bedroom with a Walk In Closet and second Double Door Closet so that all your clothes will be neatly tucked away. Two other bedrooms are sundrenched and include roomy double closets. A lovely Full Hall Bathroom, with an oversized vanity and tasteful touches throughout, rounds out the Second Level. And it doesn't end there. Easily accessed from the Dining Room, relax in the large, level backyard that flows effortlessly from inside. A window over the kitchen sink makes it easy to keep an eye on your guests and the kids.

This is a prime opportunity to buy into one of New Jersey's most desirable towns with top-rated Millburn schools. With its prestigious neighborhood close to top most rated (Great Schools 10/10) Wyoming School, close proximity to Midtown Direct train and New York City and convenient walk to Millburn and Maplewood train stations, shopping and restaurants, 57 Cypress is an exceptional value and cannot be missed!



INSIDE & OUT

FIRST LEVEL

- Living Room featuring entry door, hardwood floors, gas burning fireplace with brick surround, picture window, baseboard molding, staircase to Second Level
- Dining Room featuring double French doors at entry, hardwood floors, wide window with park view, brand new chandelier, baseboard molding, Pella designer double glass built in blinds door to Deck
- Chef's Kitchen with hidden pull out privacy door featuring hardwood floors, tons of custom wood cabinetry including glass door cabinetry, laminate countertops, stainless steel refrigerator/freezer, oven/range, dishwasher, built in microwave, recessed lighting, soothing under the cabinet lighting, window overlooking rear yard
- All Windows Pella designer built in blinds
- Full glass lockable storm door for additional lighting and street view
- Installed ADT security system with cellular backup for easy activation

GROUND LEVEL

- Door to 1 Car Garage
- Family Room featuring brand new flooring, natural wood wainscoting with ledge, recessed lighting, above ground Pella designer window, storage closet
- Laundry Room featuring tile flooring, washer, dryer, Pella designer Window
- Full Bath featuring tile flooring, Pella designer Window, natural wood wainscoting, pedestal sink, shower with glass door and tile surround, recessed lighting, fan, storage cabinet

SECOND LEVEL

- Second Floor Landing featuring hardwood floors
- Master Bedroom featuring hardwood floors, flush mount light fixture, Walk In Closet, Double Door Closet, baseboard molding, 2 Anderson argon gas triple pane sound detonating windows
- Bedroom #2 featuring hardwood floors, Double Door Closet, baseboard molding, flush mount light

fixture, 2 Anderson argon gas triple pane windows with sound detonating windows

- Bedroom #3 featuring hardwood floors, Double Door Closet, baseboard molding, flush mount light fixture, Pella designer double pane built in blinds window
- Full Hall Bath featuring tile flooring, oversized custom wall to wall vanity with storage, tub/shower combination with tile surround, recessed lighting, Pella designer window overlooking backyard

LOWER LEVEL

- Utility Room
- Storage Room
- Small play room with new flooring and storage closet
- Office/Bedroom #4 featuring new flooring, recessed lighting, baseboard molding, Closet
- Full Bath featuring tile flooring, vanity with storage, corner glass door shower

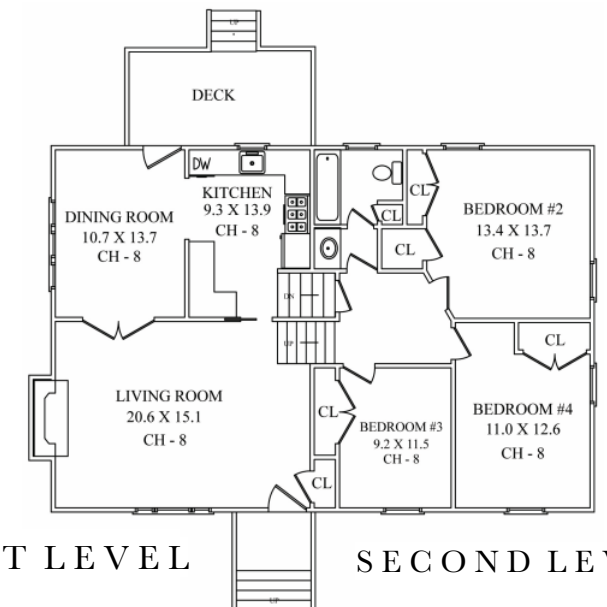
FRONT / BACKYARD

- Paver front walkway, lantern/post
- Foundational plantings
- Paver, 2 car wide driveway
- Freshly painted Wood Deck in rear
- Flat, lush backyard with mature specimen trees, fenced in yard and privacy
- Lounging/Fire Pit Area

ADDITIONAL FEATURES

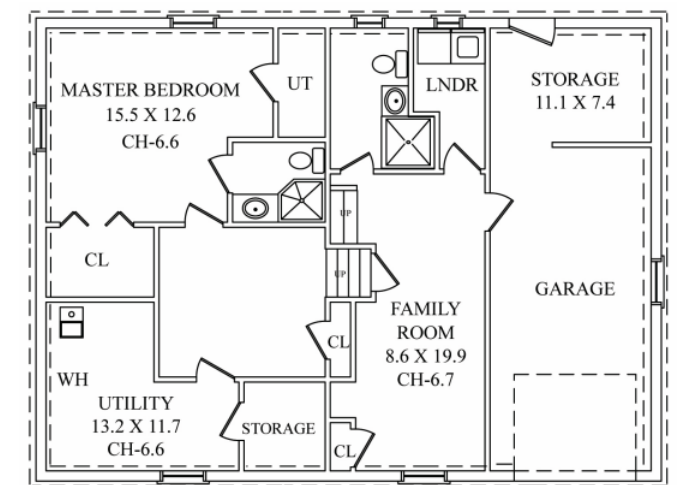
- Painted soothing hues throughout
- Pella designer windows and doors
- Built in blinds
- Sound barrier protection
- Full size car garage with additional storage space in the back
- New top-quality attic insulation (Atticare)
- New premium sump pump with surround drain
- Recently trimmed large overhanging branches for safety
- New soil and grass seed for the side of the house
- Newly replaced/repaired sidewalk

THE FLOORPLAN



FIRST LEVEL

SECOND LEVEL



LOWER LEVEL

GROUND LEVEL



Each Keller Williams office is individually owned and operated.

CELL: 973.936.9129
OFFICE: 973.376.0033 x101
info@sueadler.com
sueadler.com/57Cypress

The information contained herein has been obtained through sources deemed reliable by The Sue Adler Team, but cannot be guaranteed for its accuracy. We recommend to the buyer that any information, which is of special interest, should be obtained through independent verification. ALL MEASUREMENTS ARE APPROXIMATE.