

18 BRIDGE STREET
CHATHAM, NJ



A short drive through the tree-lined streets of desirable Chatham Borough brings you to the move-in ready Cape Cod home at 18 Bridge Street. Charming period details combined with modern upgrades make this home a must see!

Step through the front door into the welcoming Living Room where gleaming hardwood floors and large windows create a light filled room that's ideal for family gatherings and fun times with friends. Continue on through a broad archway into the formal Dining Room to enjoy meals prepared in the adjacent updated Kitchen equipped with maple cabinetry and stainless steel appliances accented by warm hued granite countertops and tumbled marble backsplash. The conveniently located Mud Room with ample pantry storage also provides access to the backyard while spacious Guest Bedroom and an updated Powder Room located just off the Living Room complete the first level living space. Take note of the original crystal doorknobs throughout that add an elegant charm to the home.





When it's time to retire at the end of the day, proceed up the stairway to the second level where 2 bedrooms and a fully renovated hall bath meet all your personal needs. The spacious Master Bedroom has plenty of closet space and attractive oak floors, and the cheery second bedroom with large windows is sure to please as well.

And there's more...a light and airy finished lower level provides great space for day and night entertainment and includes an expansive Recreation Room that's not only ideal for family fun but provides plenty of options for storage as well. You are sure to enjoy evenings at home in front of a big screen TV that sits comfortably in the attractive built-in wall unit. Outside, a lush flat lawn provides an inviting backdrop for outdoor entertaining on the raised wooden deck, while the spacious corner lot assures plenty of room for all your outdoor hobbies.

This move-in ready home has been lovingly upgraded both inside and out. Top-notch schools, easy access to NYC transportation and world class shopping and restaurants are simply the icing on the cake.



INSIDE & OUT

FIRST LEVEL

- Covered portico leading to front door
- Living Room with hardwood floors, crown moldings, ceiling fan, deep base moldings, 2 large windows with window treatments; broad archway to Dining Room and access to stairway to second level, Bedroom #1 and Powder Room
- Dining Room with hardwood floors, crown moldings, deep base moldings, iron chandelier, 2 large windows with window treatments and doorway to Kitchen
- Kitchen with ceramic tile floor, granite countertops, light wood cabinetry, tumbled marble backsplash, stainless steel Frigidaire refrigerator/freezer, Kenmore 4 burner gas range with oven below, KitchenAid dishwasher, 2 windows with window treatments; access to lower level and Mud Room
- Mud Room with ceramic tile floor, pantry/storage area and door to raised rear deck
- Bedroom #3 with hardwood floors, crown moldings, deep base moldings, closet, light fixture and 2 windows with wood blinds
- Powder Room with ceramic tile floor, pedestal sink with mirror above, 2 sconces and large window with window treatments

SECOND LEVEL

- Gallery landing with hardwood floors and large picture window with window treatments
- Master Bedroom with carpet, ceiling fan, 2 double closets with wire shelving, additional storage closet below dormer ceiling, 2 windows with wood blinds
- Bedroom #2 with carpet, ceiling fan, double closet with bi-fold doors, storage closet under dormer ceiling, window with wood blinds
- Full Hall Bath with ceramic tile floor, vanity with Corian countertop, sink and storage below and mirror above, light fixture, privacy window with frosted glass, linen closet and scone

LOWER LEVEL

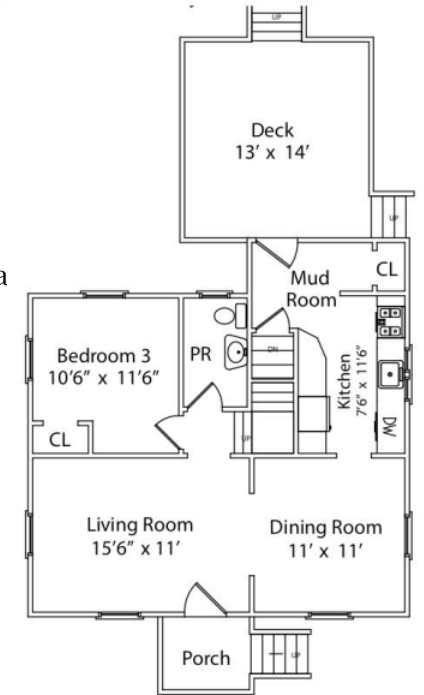
- Large pantry closet with wire shelving
- Recreation Room with carpet, full wall built-in unit with shelves and storage cabinets, chair rail with white paneling below, built-in window seat, recessed lighting, 3 grade level windows with wood blinds, 2 large storage closets
- Full Bath with slate tile floor, pedestal sink with mirror above, commode, stall shower with slate tile walls and glass door, scone

- Laundry/Utility Room with washer and dryer and utility sink
- Large unfinished storage area with refrigerator, dehumidifier and staircase leading to exterior door and driveway

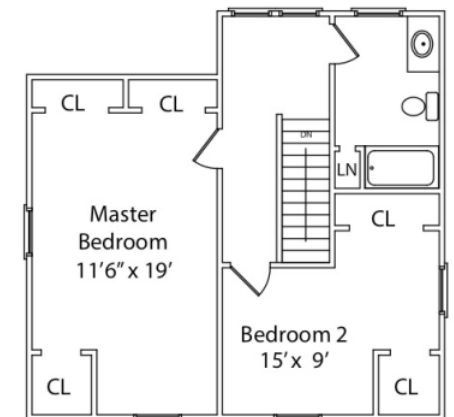
ADDITIONAL FEATURES & UPGRADES

- 1 Zone forced air heat and central air conditioning
- Detached 2-car Garage with electric door and attic storage area
- Garage roof (2015)
- Home roof repaired and front half replaced (2015)
- New Attic Fan (2015)
- Added Battery Backup to Sump (2015)
- New Bathroom fan (reouting) (2016)
- New Water heater (2016)
- Nest Doorbell and Keyless Entry Added to Security System (2017)
- New Sink Fixture and Water Filter in Kitchen (2017)
- New Glass Shower Door (2017)
- Powerflush 2nd Floor Bathroom (2018)
- New Washer/Dryer (Maytag) 2018
- New Master Bedroom Fan/Light (2018)
- Updated Water Pressure Sensor (Senses City Water) (2018)
- New French Drain to Help send water away from yard and house (2018)
- New Furnace (2019)
- New Dishwasher (Bosch) (2019)
- New 2 Sensor Ecobee Thermostat (2019)
- New Security Light on Side of House (2020)
- Raised Concrete Sidewalk at Front of House (2019)
- Repainted Entire House, Front Porch and Back Deck (2020)
- Updated bathrooms and kitchen
- Fenced-in rear yard with flat lawn Extra long driveway with space for multicar parking
- Professional landscaping with perennials
- ADT security system
- Blocks to NYC train, town and schools

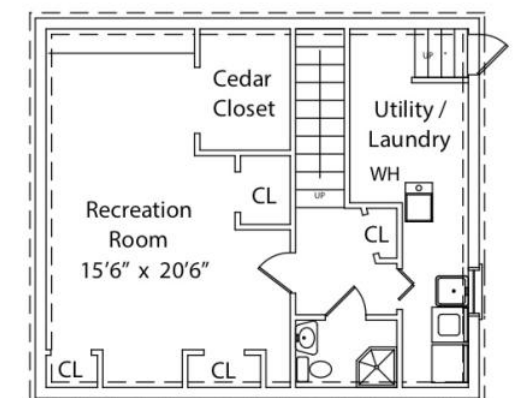
THE FLOOR PLAN



FIRST LEVEL



SECOND LEVEL



LOWER LEVEL



CELL: 973.936.9129

OFFICE: 973.376.0033 x101

EMAIL: info@sueadler.com

sueadler.com/18Bridge

All information deemed reliable but not guaranteed