

# 56 COLT ROAD SUMMIT, NJ









Get ready to fall in love with 56 Colt Road! This gorgeous 5 Bedroom, 5.5 Bath regal Georgian Brick Colonial, in the sought after Franklin School District, has it all with close proximity to Memorial Field, New York City, Midtown Direct train, excellent restaurants, shopping and all Summit has to offer.







Drive up the lovely tree-lined street and take in this home's incredible curb appeal. Step inside the breathtaking Entry Foyer with gleaming hardwood floors, soothing hues and high-end designer touches at every turn. A Walk In Closet with lockers ensures that all coats and backpacks will be neatly tucked away. Walk into the blissful sun drenched Living Room with regal wainscoting, a fabulous window seat and so much room for entertaining family and friends. Flow easily into the luminous Dining Room with more exquisite moldings, a statement linear chandelier and plenty of room to host family gatherings. The Dining Room flows seamlessly into the superbly renovated Gourmet Chef's Kitchen featuring sleek white and navy custom cabinetry, a fabulous oversized island, top of the line stainless appliances and Italian limestone and marble countertops. Sleek tile selections and a cool sputnik light fixture add extraordinary style.



Enjoy a cup of coffee in the Breakfast Room with double French doors overlooking the rear Patio and gardens. The adjacent Family Room dazzles with floor to ceiling architectural windows and a chic modern fireplace making this the perfect place to curl up with a book or spend time with family.

The Family Room connects back to the Living Room providing amazing flow for entertaining! Don't miss the to die for Patio, Fire Pit and the meticulous professional landscaping making the backyard ideal for all your outdoor entertaining. A lovely Powder Room rounds out the First Level.











When it's time to retire for the evening, the stately staircase, with a chic custom runner, leads you to the second floor with four spacious bedrooms and three full baths. Luxury abounds in the enormous Master Bedroom drenched in sunlight and with a dramatic tray ceiling and high-end design. The Master Suite is functionally designed with the BEST custom Walk-In Closet and a spa-like Master Bathroom complete with a huge double vanity, frameless glass shower door and on-trend tile selections. Three additional large-sized bedrooms (1 is ensuite) are steeped in sunlight and include huge closets. An additional Full Bath includes two chic vanities and gorgeous tile. Need to work from home? The serene Home Office, with striking glass pocket doors at entry, is ideal for all your Zoom calls. A graceful open staircase leads you to the spacious Third Level with a huge Ensuite Bedroom (currently being used as a second Office) which feels luxurious and offers tons of privacy. A cedar Walk In Closet and tons of storage round out the Third Level. And there's more...





The Lower Level adds tremendous functional space to the home. A large and cheery Recreation Room with new engineered wood flooring, is the perfect spot for movie watching, arts and crafts and dramatic play. Getting into shape is a pleasure in the custom Exercise Room. A huge Storage/Utility Room means all clutter can be neatly tucked away or provides plenty of room to build your own Wine Cellar. A Full Bath and Laundry Area round out the Lower Level. Not only is this house exquisite on its face, but it is also completely “smart” so that you can control everything from your phone. A house of this caliber and with this level of design rarely comes on the market. With its proximity to Memorial Field, easy access to Midtown Direct train service, sought after school district and convenience to fantastic shopping and restaurants in downtown Summit, you will undoubtedly want to call 56 Colt Road home.









# I N S I D E & O U T

## FIRST LEVEL

- Entry Foyer featuring NEW solid walnut entry door with sidelites and arched transom, hardwood floors, designer light fixture with drum shade, recessed lighting, baseboard molding, crown molding, Walk In Coat Closet with lockers, staircase with custom runner to Second Level
- Powder Room featuring tile flooring, washbasin sink, baseboard molding, crown molding, recessed lighting, decorative window with leaded glass
- Living Room featuring hardwood floors, wainscoting, window seat with bay window, recessed lighting, baseboard molding, crown molding
- Dining Room featuring hardwood floors, wainscoting, designer wallpaper, recessed lighting, linear chandelier, oversized windows, crown molding
- Fully Renovated (NEW 2013) Gourmet Chef's Kitchen featuring hardwood floors, custom wood cabinetry including glass door cabinetry, Italian limestone countertop on exterior, tile backsplash, oversized island with quartzite countertop, 2 sinks, modern sputnik style light fixture over island, recessed lighting, Kitchen Aid stainless double wall ovens, Kitchen Aid stainless refrigerator/freezer, 2 Kitchen Aid refrigerator drawers, Wolf stainless 6 burner cooktop with griddle, Wolf industrial stainless hood, 2 Bosch dishwashers (1 is NEW), decorative backsplash behind cooktop, Bar Area featuring built in cabinetry including glass door cabinetry for bar glass storage, Italian limestone countertops, tile backsplash, wine refrigerator (NEW), door to Garage
- Breakfast Area featuring hardwood floors, double French doors out to Patio, recessed lighting, baseboard molding, crown molding
- Family Room featuring hardwood floors, NEW natural gas fireplace with modern stone mantle and hearth, architectural arched windows, recessed lighting, baseboard molding, crown molding
- 2 Car Garage with NEW Lift Master garage doors, rail system and transmitters, NEW built in storage

## SECOND LEVEL

- Second Floor Landing featuring hardwood floors, custom area rug throughout, wainscoting, baseboard molding, crown molding, Linen Closet
- Master Bedroom (NEW 2013) featuring designer carpeting, vaulted tray ceiling, custom soffit and uplighting, recessed lighting, baseboard molding, Dressing Area, Walk In Closet with custom adjustable shelving, hanging storage, drawers and island
- Master Bathroom featuring tile flooring with radiant heat, oversized double custom vanity with quartzite countertop with open and concealed storage, tiled accent wall, frameless glass door shower with designer tile surround and bench, rain showerhead, separate room for toilet, sconces, recessed lighting
- Office featuring double glass pocket French doors at entry, hardwood floors, recessed lighting, baseboard molding
- Bedroom #2 featuring designer carpeting (NEW 2013), 2 Double Door Closets with custom storage, recessed lighting, baseboard molding, crown molding
- Ensuite Bedroom #3 featuring designer carpeting (NEW 2013), Double Door Closet with custom storage, recessed lighting, baseboard molding, crown molding, Renovated Bathroom featuring tile flooring, designer vanity, recessed lighting, sconce over sink, glass door shower with designer tile surround
- Bedroom #4 featuring designer carpeting (NEW 2015), 2 Double Door Closets with custom doors and custom storage, recessed lighting, baseboard molding, crown molding
- Renovated Full Hall Bathroom (2017) featuring tile flooring with radiant heat, 2 vanities with quartz countertops, shower over tub with designer tile surround, recessed lighting, separate room for toilet

## THIRD LEVEL

- Open staircase with custom runner to Third Level
- Third Level Landing featuring custom area rug, recessed lighting, crown molding, baseboard molding, 2 dormers with window seats with arched windows

- Office/Ensuite Bedroom 5 featuring hardwood floors, baseboard molding, recessed lighting, Walk In Closet, recessed shelves, Bathroom featuring tile flooring, corner glass door shower with designer tile surround, recessed lighting, NEW modern vanity, baseboard molding
- Cedar Walk In Closet
- Storage Closets
- Crawl space storage

## LOWER LEVEL

- Carpeted staircase to Lower Level
- Renovated Recreation Room (2020) with both lounge and play area featuring NEW engineered hardwood floors, drop ceiling with recessed lighting, baseboard molding, Toy Closet
- New Exercise Room (2017) featuring NEW Gym flooring, custom cut mirrors, drop ceiling with recessed lighting, open shelving, baseboard molding, double doors to Storage/Utility Room
- Full Bath featuring tile flooring, vanity, corner glass door shower with tile surround and mosaic accent borders, baseboard molding
- Laundry Area with NEW Washer and Dryer, utility sink
- Large Storage/Utility Room

## FRONT & BACKYARD

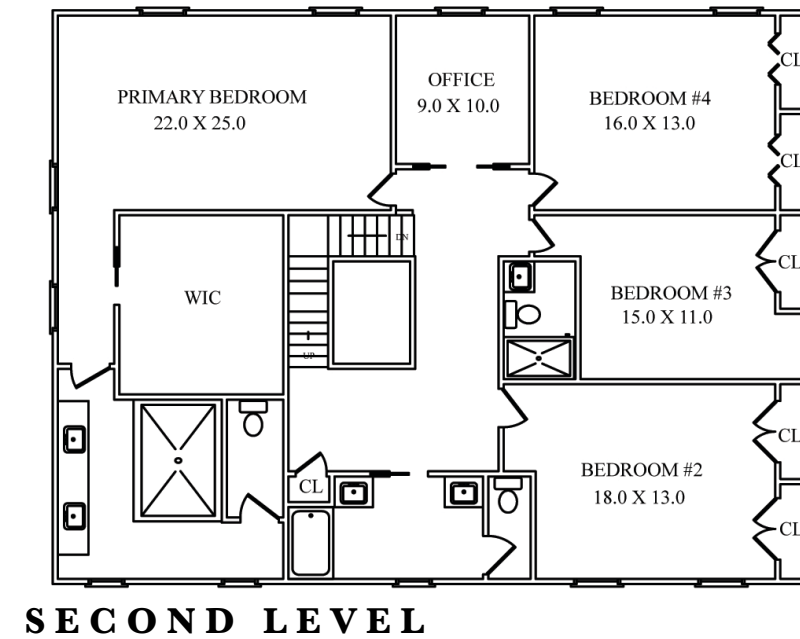
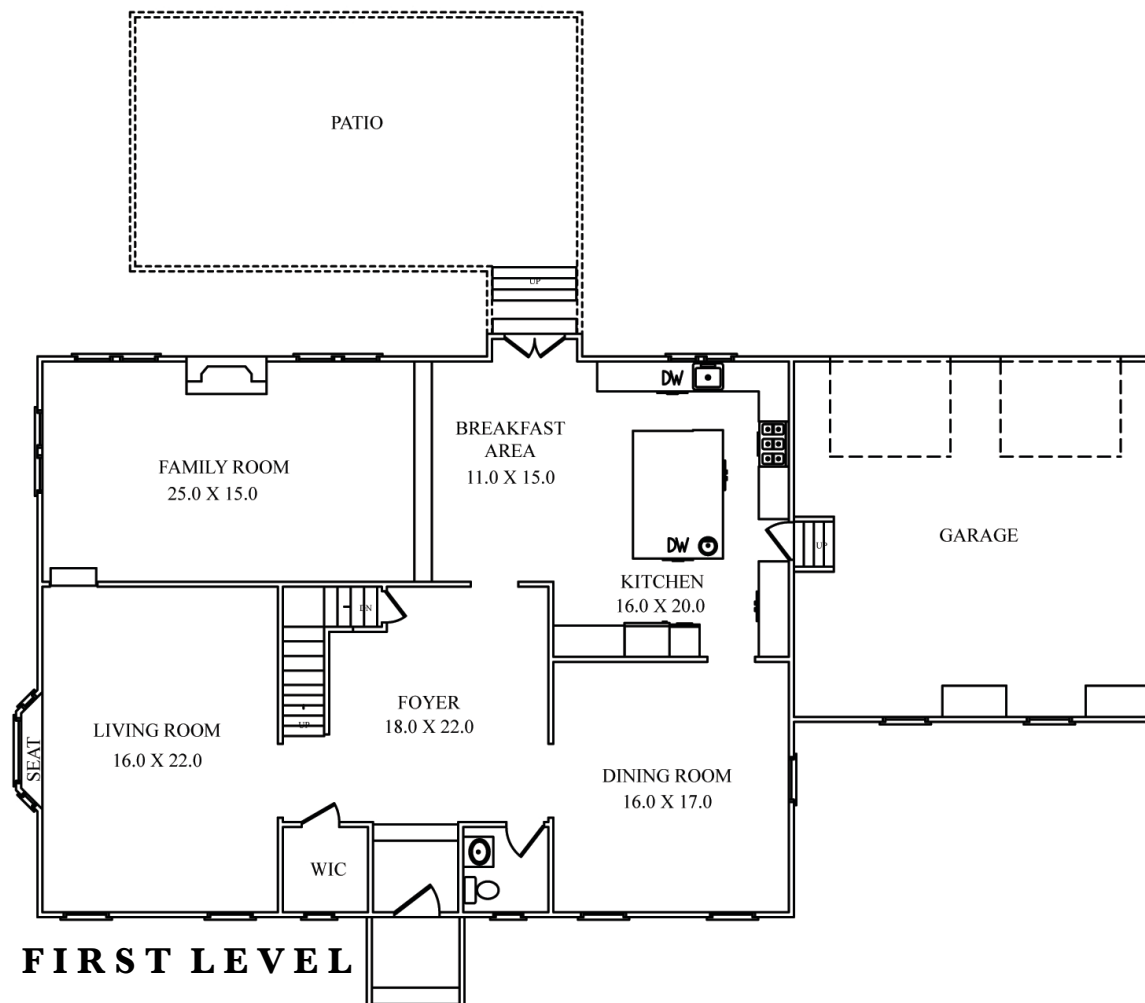
- Extensive meticulous and professional landscaping of entire property by Cording Landscape Design with foundation shrubs and exquisite blooming perennials and trees
- Bluestone front walkway
- Front Sitting Area
- New Huge Patio with areas for dining and lounging
- New Fire Pit with gas
- Gas grill
- New Walkways
- Walpole lattice privacy fencing
- Irrigation system
- Custom outdoor lighting
- CedarWorks custom cedar play set
- Installed major drainage system and catch basin to avoid any water backup on property
- New retaining stone wall along back of driveway

## ADDITIONAL FEATURES & UPGRADES

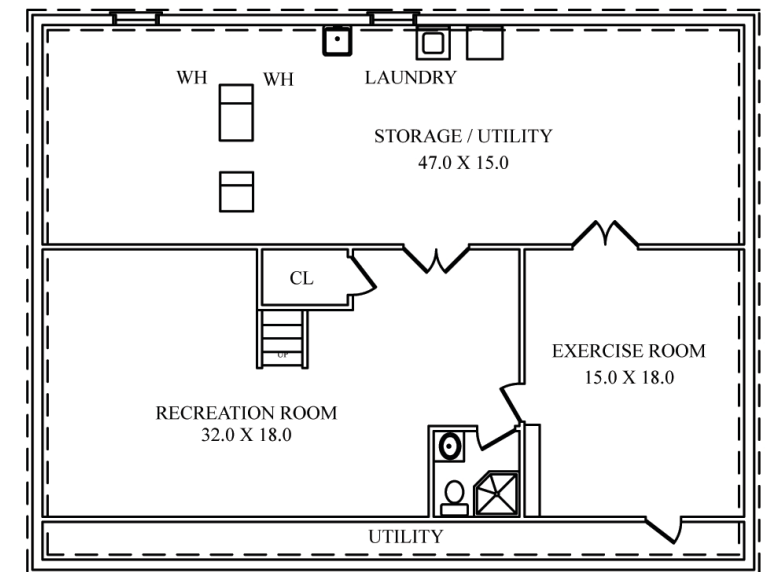
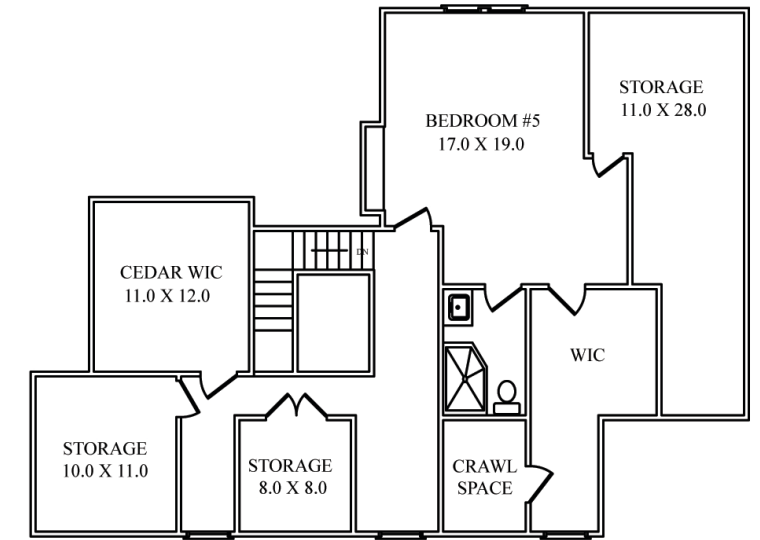
- Freshly painted soothing hues throughout
- New moldings throughout
- Custom designer window treatments throughout
- Hardwood floors refinished throughout
- New Anderson windows and doors throughout
- New solid walnut front door includes 20 year warranty
- Recessed lighting throughout and newer light fixtures throughout
- Additional electrical panel installed 2013
- Generac generator with capacity to run entire house
- Media/Cable lines run throughout house and system installed in Media Tower for all TV's to run wirelessly; All cable boxes, apple TV's located in media tower
- Speakers installed throughout house and is Sonos enabled (including back patio)
- Nest smart home thermostats installed
- Wifi commercial grade boosters run on each floor of the house
- High Connect exterior video camera security system with 5 cameras placed strategically around the home
- Complete home automation; remote access to alarm, audio, heating/air conditioning, security cameras, lighting, garage doors
- New Hardieplank siding (rear)
- Complete Master Suite renovation in 2013
- All other bathrooms renovated with new vanities, toilets, etc.
- New larger hot water heater installed
- August Smart Home Lock (accessible via phone from anywhere)
- Ring doorbell installed
- All light switches in house replaced with Savant lighting system so that all lights are smart home enabled and can be controlled from your phone anywhere, allows for timed lighting events, different scenes etc.
- Complete driveway replacement



# THE FLOOR PLAN



**THIRD LEVEL**



NOT TO SCALE - This floor plan is provided for illustration purposes only.  
Room positions and dimensions are approximate and should be independently measured for accuracy



