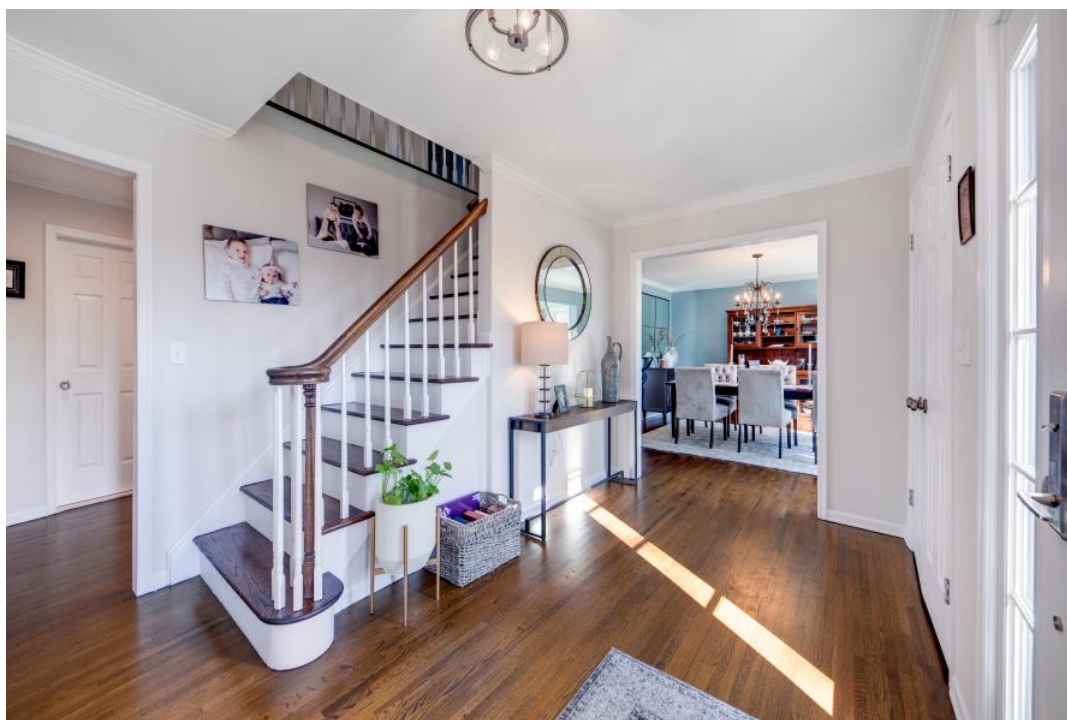


1 2 7 C A N D A C E L A N E
—
C H A T H A M , N J





Welcome to 127 Candace Lane in Chatham!
Enjoy the very best of Chatham Township in this classic 5-bedroom, 2.5 bath, Center Hall Colonial. Situated near the Chatham and Summit train stations for direct access to NYC, this home is located on a quiet, tree-lined, family-friendly street. Natural light shines into each room of this stunning, move-in-ready home.

The pristine redesigned landscaping will draw you into this bright, tasteful home. Step through the entryway into a transitional styled home. The dark wood floors and crown molding in the first level provide a sophisticated foundation for the rest of the home. Enter the beautiful dining room with a large bay window to enjoy the sunrise with your cup of coffee. Crown molding and wainscoting highlight this room; the Pottery Barn crystal chandelier adds an extra touch of elegance.



Step into the modern white and grey eat-in kitchen. Stainless steel appliances, white cabinets, an oversized pantry and a center island are perfect for family dinners and virtual school sessions. For convenience, the laundry area is located off the kitchen with a brand-new Samsung HE washer and dryer. Open the Anderson sliding doors to host a dinner party on your expansive deck lined with a built-in bench for extra seating; it can fit a large dining set, lounge seating and outdoor toys. Gaze into your vast backyard, admiring the gorgeous roses, hydrangeas, and privacy the giant arborvitae trees and fences provide. Enter back through the kitchen and make your way over to the family room to enjoy watching a movie with the kids; the television is centered over the wood burning fireplace. On either side of the fireplace are built-in shelves to showcase your décor and cabinets for your storage needs. You can also access the deck through Anderson sliding doors in this room. Wander around to the formal living room where you can host family and friends for holidays and special occasions. The crown jewel in this room is the large bay window, through which you can see the blooming cherry blossom tree, hydrangeas, boxwoods and rose bushes all spring and summer.

When you arrive home with your family enter through the newly renovated two-car garage complete with epoxy floor, The Container Store custom storage shelving and mudroom with hooks; there you can hang backpacks, handbags, coats, keys and umbrellas. The garage flows into your finished basement with a large sitting area, wall-mounted television and spacious play area for the kids. Each side of the basement contains two double closets plus a utility room that has storage space; the storage is ample enough to hold toys, wrapping paper, holiday décor, winter coats, boots and luggage. There is even space in the entryway for a Peloton or similar exercise machine and workout accessories can be kept in the adjacent closet.



After a long day head up to the second floor and enjoy the five bedrooms and two full baths. Each room has crown molding and double closets. Enter the spacious master bedroom with two double closets and a walk-in closet. The master bath has an oversized walk-in shower and single sink vanity. The second full bath on this floor has a double sink and a tub/shower with linen closet. One bedroom is currently set up as an office, with two large desks, a reclining chair, a wall-mounted television and a console table with file organization. The hall double closet offers ample space to store linens, medicine, vitamins and toiletries. But if you're looking for more storage, just pull down the stairs to find a large attic.

This house's picturesque facade and landscaping will wow your neighbors. The front yard was completely renovated to include modern walkway lighting and nighttime up-lighting. The plantings were chosen to provide color and elegance, even during the colder months; they include a pear tree, cherry blossom tree, rose bushes, endless summer and limelight hydrangeas, boxwoods, coral bells, holly trees and peonies. The massive, fenced-in backyard is level to the deck and offers complete privacy with over 30 giant arborvitae trees, a 12-foot trampoline and an outdoor toddler playhouse. To complete the exterior renovations the owners added a whole house generator and an irrigation system to keep your landscaping looking beautiful; nothing was overlooked.

127 Candace Lane is the ideal, classic turn-key home for any family looking for their forever home. The gorgeous landscaping, expansive backyard, bright and spacious rooms, charming original details and abundant storage space throughout make this a must-see home!

INSIDE & OUT

FIRST LEVEL

- Entry Foyer featuring flush mount light fixture, hardwood floors, crown and baseboard molding, staircase to Second Level
- Dining Room featuring crystal chandelier, hardwood floors, crown and baseboard molding, wainscoting and a bay window
- Kitchen featuring white cabinets, large island with 2 pendant lights, stainless steel appliances, large pantry with pull-out doors, Anderson sliding doors to deck, dining area with chandelier, over sink window, recessed lighting, hardwood floors, baseboard molding, brand new Samsung washer and dryer with storage cabinets located off kitchen
- Family Room featuring custom built-in shelves and cabinets, wood burning fireplace, Anderson sliding doors to the deck, hardwood floors, crown and baseboard molding
- Living Room featuring large bay window, large side window, hardwood floors, crown and baseboard molding
- Powder Room featuring single sink vanity, tile flooring, one window, exhaust fan, crown and baseboard molding

SECOND LEVEL

- Beautiful dark stained wood staircase and matching banister to Second Level
- Second Floor Hallway featuring recessed lighting, double linen closet with sliding doors, attic with pull-down stairs, hardwood floors, crown and baseboard molding
- Master Bedroom Suite featuring two double closets, large walk-in closet, three windows, hardwood floors, crown and baseboard molding
- Master Bathroom featuring walk-in shower, single vanity sink, recessed lighting, exhaust fan, tile floors, crown and baseboard molding
- Office (bedroom #2) featuring two windows, double closet, wall mounted television, hardwood floors, crown and baseboard molding
- Bedroom #3 featuring double closet, two windows, hardwood floors, crown and baseboard molding

- Bedroom #4 featuring double closet, two windows, hardwood floors, crown and baseboard molding
- Bedroom #5 featuring double closet, two windows, hardwood floors, crown and baseboard molding
- Full Hall Bathroom featuring double sink vanity, linen closet, tub/shower, tile flooring, recessed lighting, exhaust fan, crown and baseboard molding

LOWER LEVEL

- Carpeted staircase with wood banister leading to finished basement
- Play and sitting area with carpeting, laminate flooring in the entryway area
- Spacious kids' play area with two large double closets
- Sitting area with wall mounted television
- Entryway with two additional double closets
- Two windows
- Utility/Storage Room
- Baseboard molding
- Access to the newly renovated 2-car garage, complete with epoxy floor and custom storage system, including shelving and mudroom area with additional shelves and hooks

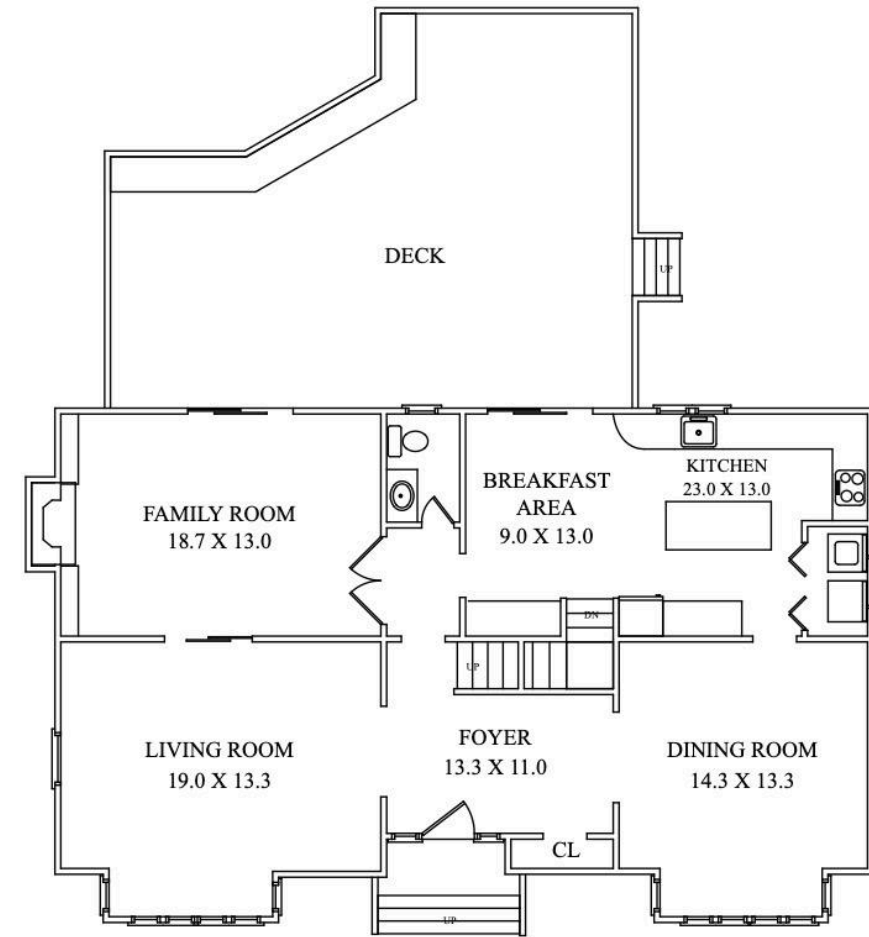
FRONT/BACKYARD

- Sprawling lot with meticulous plantings (including birch tree, pear tree, cherry blossom tree, rose bushes, endless summer and limelight hydrangeas, PV hydrangea trees, box woods, holly bushes, coral bells, peonies and giant arborvitae trees)
- Flat, fenced-in backyard with giant arborvitae privacy trees lining back and right side
- Attached two-car garage with epoxy flooring, custom storage system and mudroom area with additional storage shelves and hooks
- Underground sprinkler system in front, side and back yards
- Expansive wood deck, newly sanded and stained, with built-in bench seating
- 12-Foot trampoline and outdoor toddler playhouse

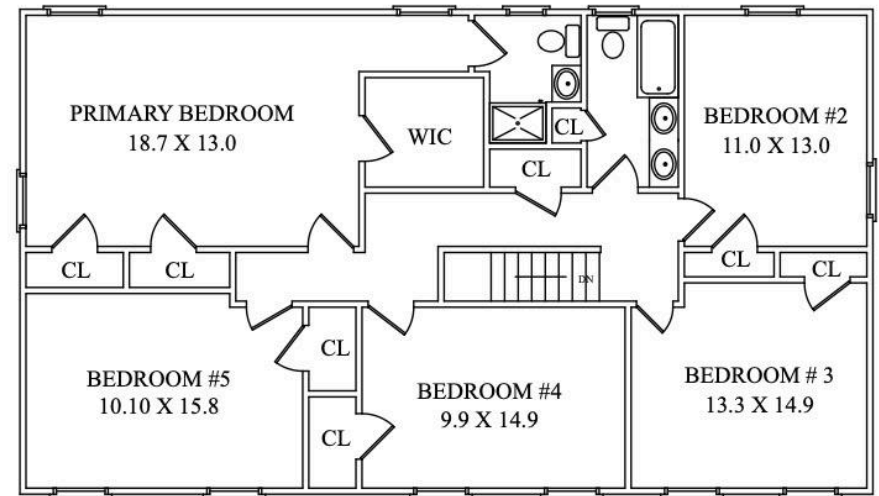
ADDITIONAL FEATURES

- Premium Anderson sliders in kitchen and family room
- Entire inside of home painted
- Upstairs carpeting in 3 bedrooms replaced with hardwood floors
- Replaced carpet and laminate flooring in basement
- Replaced all ceiling tiles in basement
- Added recessed lighting in family room and in second floor hallway
- Painted fireplace, built-ins and sliding door frames white; modernized top shelf
- Repaired, sanded and stained deck
- Sanded and stained backyard fences
- Renovated garage by adding sheet rock to walls and insulated duct, painting, epoxy flooring, added The Container Store custom organization system including shelves, "Easy Hang" track wall system, mud room area with shelves and hooks
- Installed full home generator
- Replaced front door with craftsman style door and painted black
- Installed entire home sprinkler system, controlled by Hydrowise app
- New HE Samsung steam washer and dryer
- Paid for architectural plans to remove wall between front sitting and family rooms to create one large room; planned to cover existing fireplace and install gas fireplace in center of room with built-ins; will give to buyer with contractor contact info
- Ring alarm system, doorbell and two video cameras
- Front walkway lighting system and front landscaping up lights, controlled by an app
- New iron railing on steps leading from driveway to backyard
- Two basement windows replace '
- Wall-mounted televisions in living room, basement and office

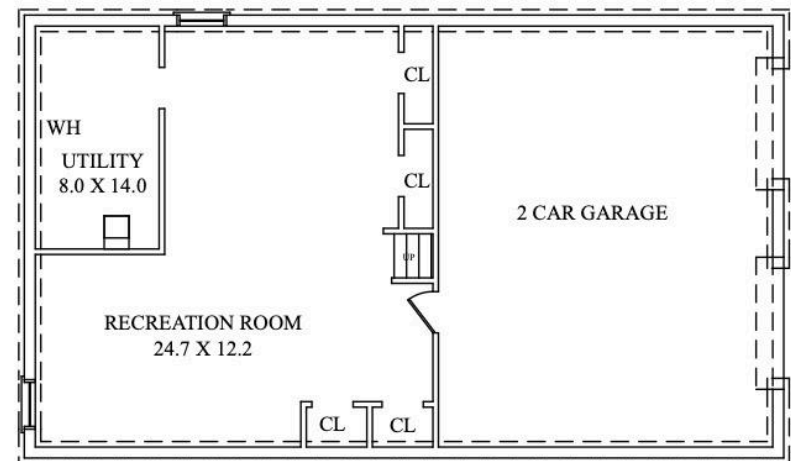
THE FLOOR PLAN



FIRST LEVEL



SECOND LEVEL



LOWER LEVEL

NOT TO SCALE - This floor plan is provided for illustration purposes only.
Room positions and dimensions are approximate and should be independently measured for accuracy

