

Each Keller Williams office is individually owned and operated.



88 FAIRMOUNT AVE
CHATHAM, NJ



Welcome to 88 Fairmount built in 1870 where elegance, charm and amazing craftsmanship greet you in the newly renovated Victorian house, 4 bedroom, 2 ½ bath home in downtown Chatham. Loads of details and charm blend perfectly in this home. Enter into the home and find yourself in the spacious living room with stunning hardwood floors. Enjoy sitting by the fireplace, reading a book or hosting the holidays. The living room is full of details from the built-in white bookcase to the gorgeous crown molding. The dining room is a great room to host a dinner party while gazing out the large windows overlooking the serene property.



Working from home is a pleasure in the home office or the kids can enjoy it as a playroom. This amazing space features a California Closet mounted desk and cabinet space that can easily be turned into an art area for the kids. The family room is spacious, inviting and opens to a bright and spacious Gourmet Chef's Kitchen with white cabinetry, granite countertops, stainless steel appliances and an area for a kitchen table. The mudroom is a nice addition to the home and can easily hold all of your day-to-day needs in two stunning floor to ceiling cabinets. A tasteful powder room completes the first level.





When it's time to retire for the evening, head to the Second Level to find three bedrooms and a full bath. Gorgeous pine wood floors and charming details are present throughout this space. Each of the bedrooms is steeped in sunlight and include roomy closets and large windows. The renovated hallway bath features a white tile floor, a tub/shower, a sink and vanity. Plenty of sunlight shines through this space. Head up the carpeted stairs to the Master Suite featuring lots of sunlight and plenty of closet space for all your needs. Enjoy relaxing here and find a walk-in closet, two double closets and a single closet. Enjoy the spa master bath that features a spa tiled shower and a double sink and vanity.





And there's more...The Lower Level, has space for entertaining and a playroom. This area features an Au Pair suite with an ensuite bathroom. You will also find a laundry alcove with a washer and dryer, sink and storage. Access to the utility closet, a spacious storage closet and stairs that lead to the backyard complete the lower level.

This renovated Victorian beauty is walkable to downtown Chatham, restaurants, pool club and elementary schools. This is an amazing opportunity to own a home with modern amenities in one of New Jersey's hottest towns.



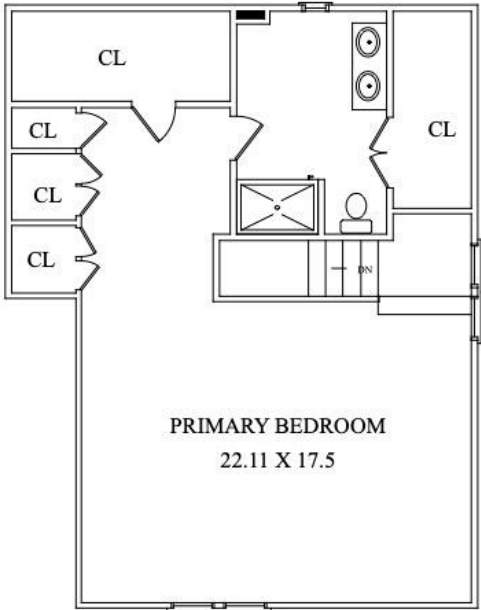
THE FLOOR PLAN



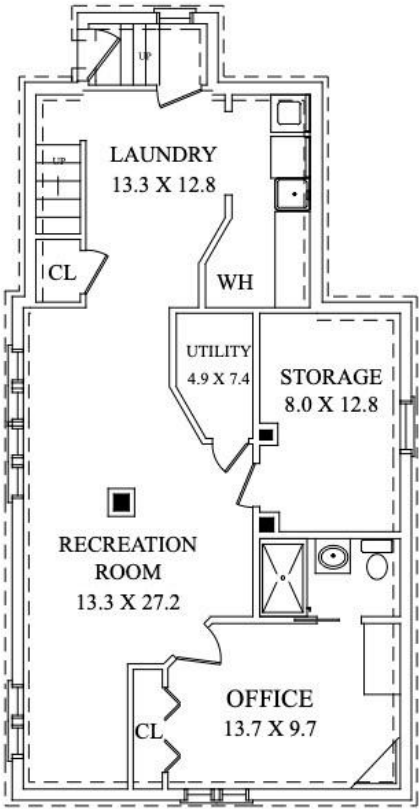
FIRST LEVEL



SECOND LEVEL



THIRD LEVEL



LOWER LEVEL

INSIDE & OUT

FIRST LEVEL

- Entry into home with access to the main carpeted staircase, flow to the living room featuring a gas fireplace, detailed white mantel, built in white bookcase, 10ft tall ceilings, ceiling detail, two large oversized windows with panel molding detail, a pair of sconces, modern chandelier, hardwood floors, crown molding built up the ceiling and baseboard molding
- Dining room featuring a built-in display cabinet, two oversized windows with detailed panel molding, wainscoting, chair rail design, modern chandelier, storage closet, coat closet, built up and crown molding, baseboard molding
- Office featuring California Closet design built in desk, drawers, cabinets and bulletin board, access to the powder room
- Power Room featuring tile floor and pedestal sink
- Family Room featuring six large windows with detailed panel molding, recessed lighting, flush mounted lighting, crown molding, baseboard molding
- Kitchen featuring crisp white wood cabinetry including glass door display cabinets, granite countertops, mosaic tile backsplash, crown molding, oversized windows with detailed panel molding, area for dining table, access to second level via back stairs, stairs to the lower level, hardwood floors, ceiling fan, recessed lighting
- Mudroom featuring two Restoration Hardware entry lockers with shelves and drawers, hardwood floors, one window with detailed panel molding, baseboard molding, access to the driveway and backyard

SECOND LEVEL

- Upstairs hallway featuring two oversized windows with detailed panel molding, linen closet, sconce lighting, pine wood floors
- Bedroom #1 featuring three large 6ft tall windows with detailed panel molding, large double closet with California shelving, flush mounted lighting, chair rail design, pine wood floors, crown molding, baseboard molding
- Bedroom #2 featuring one large 6ft tall window with detailed panel molding, two single closets, small crystal chandelier, pine wood floors, baseboard molding
- Bedroom #3 featuring two large 6ft tall windows with detailed panel molding, one closet, flush mounted lighting, pine wood floors, baseboard molding
- Hallway Bath featuring tub/shower, tile flooring, one large window, single sink and vanity, sconce lighting
- Carpeted staircase to the third level to the master bedroom

THIRD LEVEL

- Master Bedroom featuring four large windows, walk-in closet, two double closets, one single closet, pine wood floors, access to attic, baseboard molding
- Master Bath featuring spa shower with glass doors, double sink and vanity, one large window, tile floor, recessed lighting, sconce lighting

LOWER LEVEL

- Laundry alcove featuring washer, dryer, slop sink, counterspace and storage
- Tile and laminate flooring, utility closet, furnace, chair rail design, staircase leading to outside, baseboard molding, flush mount lighting
- Water softener
- Storage room
- Au Pair/Nanny room/Office with full ensuite bathroom, flush mount lighting, closet,
- Ensuite bathroom featuring shower/tub with sliding glass doors, pedestal sink

ADDITIONAL FEATURES/UPGRADES

- Repainted kitchen, family room, office and half bath (2020-21)
- Installed new water heater (2020)
- New tile floor in the basement (2018)
- Repainted living room (2017)
- Widened driveway, installed patio and replaced shed (2014)
- Family room and mudroom addition (2013)
- New HVAC with its own electric panel and new vents in kitchen and dining room (2013)
- Retiled and painted second floor bath (2012)
- Retiled, painted and installed new shower and double sink in master bath (2012)
- California closet shelving installed in master bedroom closets, laundry room and bedroom 4 (2012)
- Straightened chimney (2012)



All information deemed reliable but not guaranteed.



CELL: 973.524.0644
OFFICE: 973.376.0033 x101
EMAIL: info@sueadler.com
sueadler.com/88fairmount

