

11 HILLTOP TERRACE CHATHAM, NJ





Look no further, this is YOUR Dream House! It is not every day that a home of this caliber comes on the market. Move right into this perfectly designed 6 Bedroom, 5 1/2 Bathroom home with a seamless open floor plan and high end finishes at every turn. Built by well-known builder Steve McCann, simply put, this home is a model of absolute perfection.



Drive up the tree-lined street and prepare to be transfixed by this home. Classic siding, charming shutters and meticulous landscaping all contribute to the home's incredible curb appeal. Walk up the front walk to the covered front entry and through the double mahogany front doors into the oversized, warm, spacious, sunlit Entry Foyer featuring hardwood floors, custom wainscoting and a graceful staircase with dramatic lantern leading to the Second Floor. Move into the sun-drenched Dining Room boasting classic hardwood floors, traditional wainscoting and beautifully detailed ceiling design with a modern hanging chandelier.







Flow next to the Chef's Kitchen which is truly a work of art. Crisp white custom wood cabinetry with an enormous custom island, dreamy Caesarstone Quartz countertops, Sub Zero refrigerator and freezer, Viking range with six burners, a griddle and two ovens, Bosch dishwasher, and built-in Viking microwave. Designer kitchen lights make this space extraordinary. French glass doors take you outside to the expansive Bluestone patio with a fire pit perfect for entertaining or watching the kids play on the play set. Next move into the bright Living Room with stunning coffered ceiling, large windows and beautiful wainscoting. The Family Room is warm and cozy with a wood-burning/gas fireplace and back stairs accessing the second floor. Tucked off the Family Room is a bright and spacious Home Office. Privacy abounds in the large first level Guest Bedroom Suite. A beautiful Powder Room completes the first floor.



When you are ready to retire for the evening, head up the magnificent staircase trimmed with beautiful white wainscoting. Enter the double door Master Bedroom retreat with light literally pouring in through the windows and two of the **BEST** custom Walk-In Closets. Walk through the bedroom and unwind in the Sitting Room with vaulted ceilings and two-way fireplace. Enjoy a soak in the tub in the awe-inspiring Master Bathroom with dark walnut double vanity, Calcutta marble tile floors and huge shower with rain showerhead.

Three additional large-sized bedrooms, one with an ensuite, and two sharing a fabulous Jack-and-Jill bath with chic finishes. All are steeped in sunlight and include generous, fully custom closets. A conveniently located laundry room rounds out this level of the home.





For additional playroom space, head to the fully finished third floor to enjoy some fun! Also find lots of storage options. The lower level of this turn-key house has an expansive Recreation Room, Mudroom, full bath and extra bedroom. The three-car garage is also located on this level and features an epoxy floor and built-in storage system throughout. 11 Hilltop Terrace is an impeccable home with bright, expansive rooms, impeccable details and vast amounts of storage space, you can find a place for everything! Hilltop Terrace is also home to the most welcoming and supportive neighbors in Chatham! This house is not to be missed!





I N S I D E & O U T

FIRST LEVEL

- Foyer featuring double, solid mahogany doors with architectural arched window, two coat closets, main staircase to second level, wainscoting trim, hardwood floors, thick crown molding, baseboard molding, access to half bath, access to lower level
- Dining Room featuring two large windows with detailed crown molding and wood shutters, extensive, detailed ceiling design with modern chandelier, chair rail design and wainscoting trim, hardwood floors, recessed lighting, crown molding, baseboard molding
- Family room featuring a wood/gas fireplace, black hearth, white detailed mantel, three windows with detailed molding and wood shutters, wood floors, recessed lighting, back staircase to second level, second staircase to lower level, Sonos surround system in ceiling, French doors to office, crown molding, baseboard molding
- Home office featuring three large windows with detailed molding and wood shutters, recessed lighting, hanging light, crown molding, baseboard molding
- Kitchen featuring expansive island with white Caesarstone Quartz countertops, white wood cabinets, display cabinets, Sub zero refrigerator and freezer, Two Viking stoves (one is convection) with six burners and a griddle, Viking built-in microwave, two beverage fridges, double sink,

Calacatta marble backsplash, pull-outs in cabinets, separate area with cabinets, wine rack, glass display cabinets, countertops and prep sink, Anderson French doors to patio, three windows, crown molding, hardwood floors, recessed lighting, baseboard molding

- Homework room/Guest Bedroom featuring ensuite bathroom, four large windows with detailed molding, recessed lighting, flush mount light, one double closet, crown molding, baseboard molding, hardwood floors, door for privacy from kitchen, ensuite bathroom features tub/shower, tile floor, vanity with sink
- Living Room featuring coffered ceiling, four large windows with detailed molding and wood shutters, chair rail design, wainscoting, modern light fixture, hardwood floors, crown molding, baseboard molding
- Half bath featuring Calacatta marble floor, sink and vanity, sconce lighting, crown molding, baseboard molding

SECOND LEVEL

- Hallway featuring hardwood floors, two linen closets, recessed lighting, access to third floor, access to main floor via back stairs, crown molding, baseboard molding
- Bedroom #1 featuring an ensuite bathroom, hardwood floors, three large windows with detailed molding, walk-in closet, recessed lighting, crown molding, baseboard molding, bathroom

features tile floor, sink and vanity with lots of storage, tub/shower

- Bedroom #2 featuring two large windows with detailed molding, flushmount light, chair rail design, one double closet, hardwood floors, crown molding, baseboard molding
- Jack and Jill bathroom shared between bedroom #2 and bedroom #3 featuring tub/shower and toilet in private room, two sinks and vanities with storage, sconce lighting
- Bedroom #3 featuring two large windows with detailed molding, double closet, chair rail design, hardwood floors, recessed lighting, crown molding and baseboard molding
- Master bedroom featuring double door entry, two-way gas fireplace (other side is in the sitting room) with Calacatta marble surround and custom millwork hearth, two large windows with detailed molding, sconce reading lights, hardwood floors, recessed lighting, crown molding, baseboard molding
- Master bedroom sitting room featuring soaring vaulted 11' 5" ceilings, recessed lighting, hardwood floors, four large windows with detailed molding, two-way gas fireplace (other side is in the master bedroom) with Calacatta marble surround and custom millwork hearth
- Master bathroom featuring two walk-in closets with organizational system, Calacatta marble floor, soaking tub, dark walnut double vanity with sink, large Calacatta

marble spa shower with rain shower and glass doors

- Laundry Room featuring tile floor, washer, dryer, stainless steel slop sink, cabinets

THIRD LEVEL

- Large recreation room featuring four windows, hardwood floor, window bench, utility closet and storage room

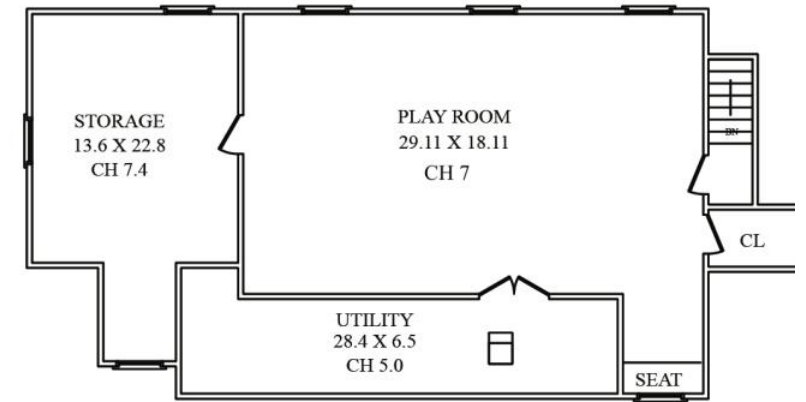
LOWER LEVEL

- Large carpeted recreation room featuring a wood/gas fireplace with brick surround, chair rail design with wood paneling, six windows with detailed molding, two utility closets (two sump pumps with battery backup), two large closets, recessed lighting, crown molding, baseboard molding
- Bedroom #5 featuring one large window, double closet, recessed lighting, crown molding, baseboard molding
- Full bathroom featuring black and white tile floor, tub/shower, vanity with sink
- Mudroom area with three built-in cubbies and hooks, tumbled tile
- Three-car garage featuring epoxy flooring, workbench area, garage storage system

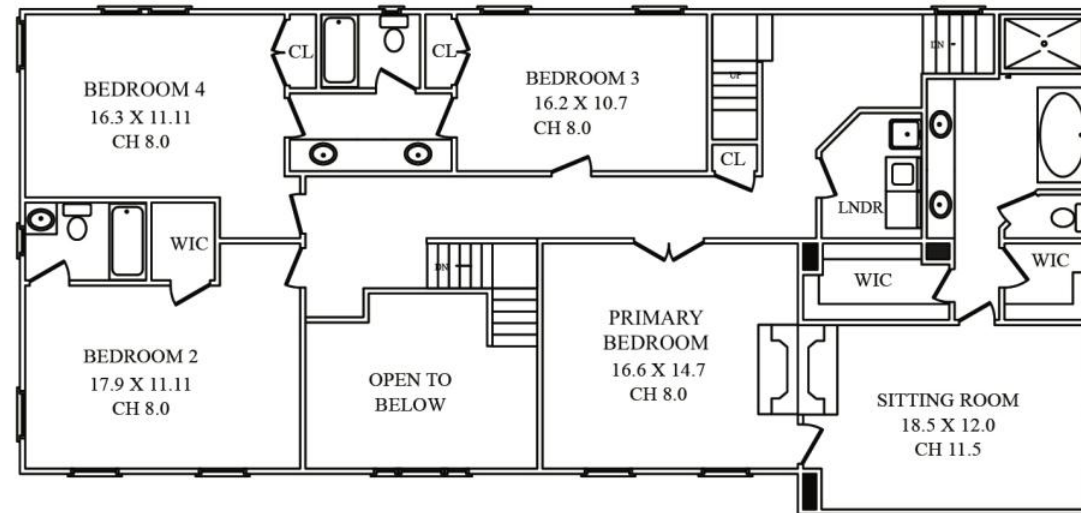
UPGRADES

- Backyard with privacy trees and play set
- Expensive blue stone patio with fire pit
- Irrigation system

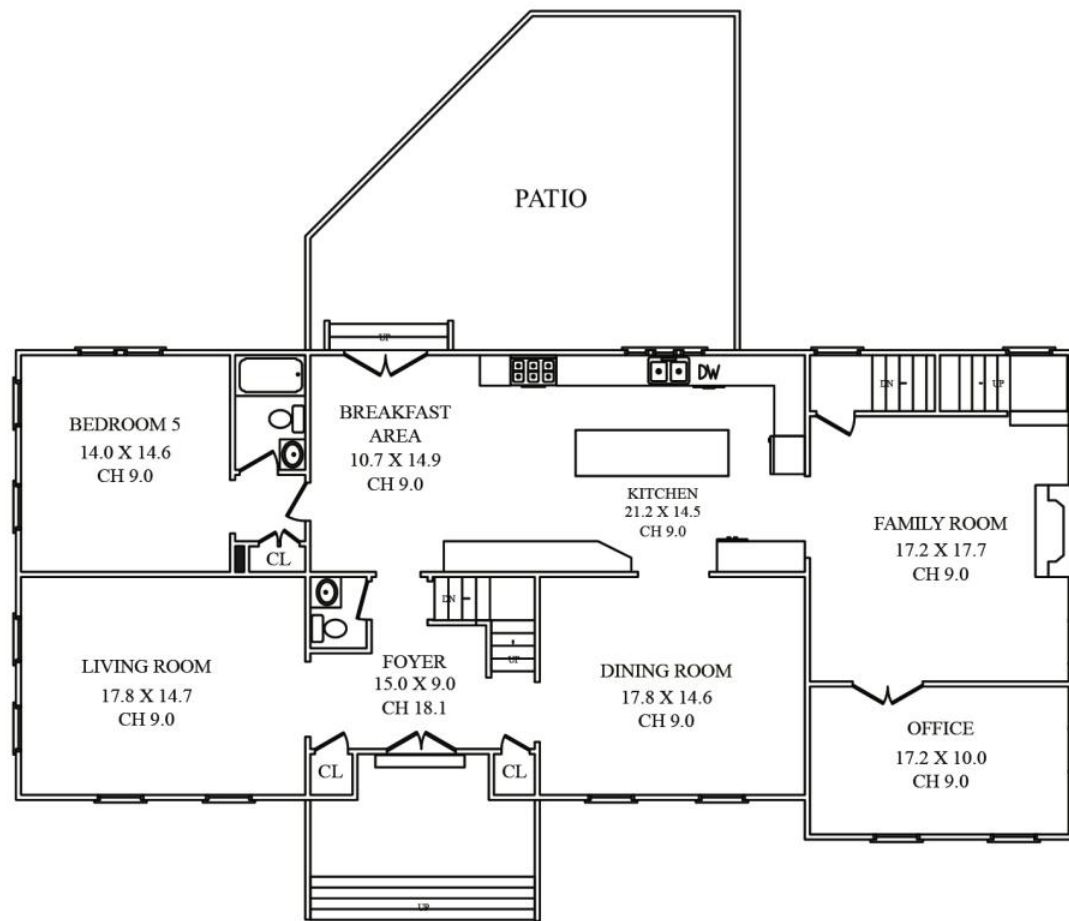
THE FLOOR PLAN



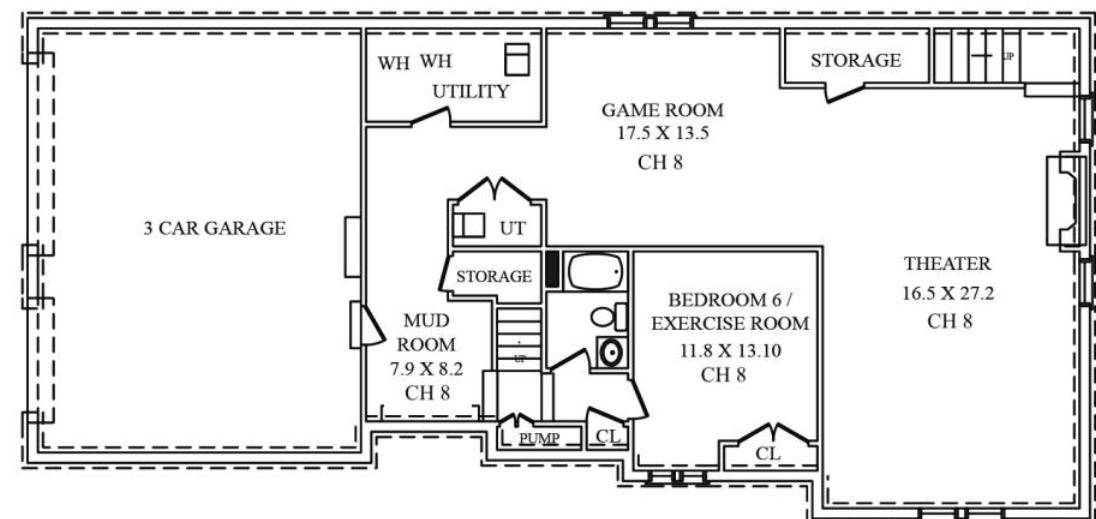
THIRD LEVEL



SECOND LEVEL



FIRST LEVEL



LOWER LEVEL

NOT TO SCALE - This floor plan is provided for illustration purposes only.
Room positions and dimensions are approximate and should be independently measured for accuracy

