



28 DOGWOOD LANE  

---

NEW PROVIDENCE





Welcome home to 28 Dogwood Lane! Enjoy the very best of New Providence in this classic 3 bedroom, 2 bath colonial. Walking distance to downtown New Providence, this home is located on a quiet, tree-lined, family-friendly street. Natural light pours into each room of this lovingly maintained home that you won't want to miss!

The charming, beautifully landscaped front yard will draw you right into this bright, open classic. Step through the pleasant, bright foyer into the beautiful living room. Natural light highlights the gleaming hardwood floors and wood burning fireplace. Built in bookshelves and an accented, painted wood paneled wall adds to the overall charm of this room. Continue through a short hallway with a full closet and room for a desk or buffet and find a space to call your own in the cozy family room, with warm hues, surrounding windows and a long window bench with storage. Flow through the living room right into an Eat In Kitchen which features modern stainless steel appliances, beautiful cabinets and a pantry to find a place for everything you need to prepare wonderful meals. Move into the attached Dining room and take in this sophisticated space with detailed built-in cabinets and traditional chair rail design. Also accessible from the kitchen, step through sliding French doors to the generous deck. Perfect to share a meal with your family surrounded by your private, fenced in backyard with beautiful mature landscaping and a shed for extra storage. A flagstone walkway leads to the attached, one car garage. A full bathroom completes the first level of this home.





When you are ready to retire for the evening, the spacious Master Bedroom invites you in with large windows and ample closet space. Tuck your family into two additional bright bedrooms, each with pristine hardwood floors, lots of closet space, and beautiful windows. The large full-sized bathroom on this floor features a separate tub and shower, as well as a vanity, sink and brand new skylight. Looking for even more storage? Pull down the stairs in the hallway to find a full attic!

When it's time to play, head down to the finished basement to the playroom with lots of storage and a wood-burning fireplace. This space could also be used as a quiet home office. Also featured in the basement is the laundry area, workbench area and access to the HVAC and furnace. 28 Dogwood Lane is the perfect, classic home for the growing family looking to soak up the full New Providence experience! With bright, spacious rooms, charming original details and lots of storage space. You can find a place for everything while being just a short stroll to all the shops, restaurants, schools and entertainment that New Providence has to offer!





# INSIDE & OUT

## FIRST LEVEL

- Foyer entry featuring staircase to second level, flush mount light fixture, coat closet, hard wood floors, baseboard molding
- Living Room featuring a wood burning fireplace with brick and cream detailed mantel, painted wood panel accent wall, two windows, three built in bookshelves with cabinets, French doors leading to family room, hardwood floors, crown molding, baseboard molding
- Hallway with full closet and space for desk or buffet
- Family room featuring nine windows, a long window bench with storage, BOSE surround sound, hardwood floors, recessed lighting, access to the wood deck
- Eat in Kitchen featuring granite countertops, wood cabinets, glass display cabinets, stainless steel appliances, stove with four burners and a griddle, one window, one sliding door leading to the deck, one door leading to porch, laminate flooring
- Full bath featuring shower with sliding glass doors, tile floor, vanity with sink, one window, recessed lighting
- Dining room featuring two windows, built in display

cabinet, modern chandelier, butler's door to kitchen, chair rail design, hardwood floors, crown molding, baseboard molding

## SECOND LEVEL

- Hallway featuring hardwood floors, pull down for attic, flush mount lighting
- Bedroom #1 featuring two large windows, a large walk in closet, chair rail design, flush mount lighting, baseboard molding
- Bedroom #2 featuring two large windows, one large closet, baseboard molding
- Master Bedroom featuring three large windows, two double closets, one storage closet, hardwood floors, three windows
- Full bathroom featuring one window, one skylight, sink and vanity, shower/tub, tile floor, recessed lighting

## LOWER LEVEL

- Carpeted staircase to lower level, laminate floors, finished playroom/office space, chair rail design, wood burning fireplace, large double closet, two windows, recessed lighting
- Large storage room featuring laundry area with washer, dryer, slop sink,

refrigerator, counterspace and cabinets, workbench area, HVAC, furnace, sump pump

## EXTERIOR

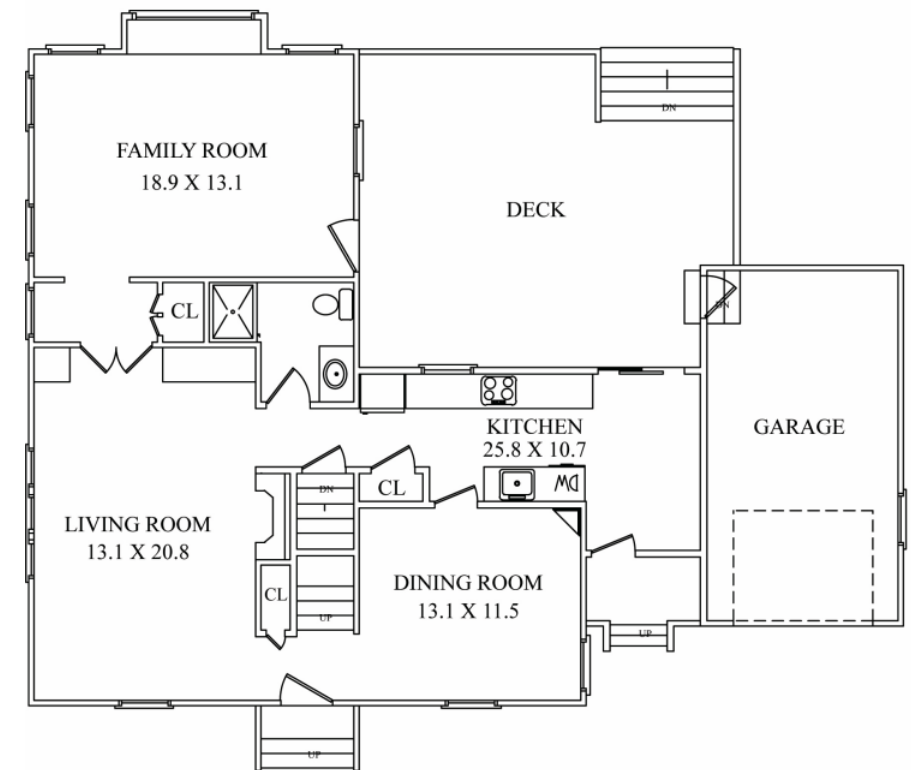
- Attached one car garage with pathway to the kitchen, flat fenced in backyard, shed for extra storage, painted wood deck, mature landscaping

## UPGRADES

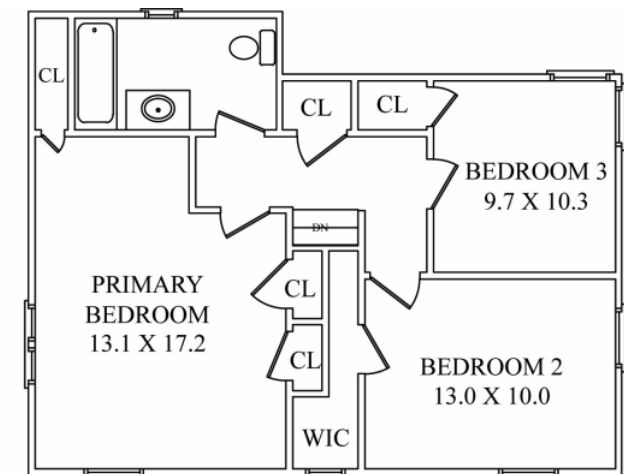
- HardiePlank Siding- 2018
- New gutters and downspouts- 2018
- Bathroom skylight- 2020
- New French drain/Sump pump/Battery backup- 2019
- Basement Dehumidifier- 2019
- New basement floor- 2019
- New Carpet on basement stairs



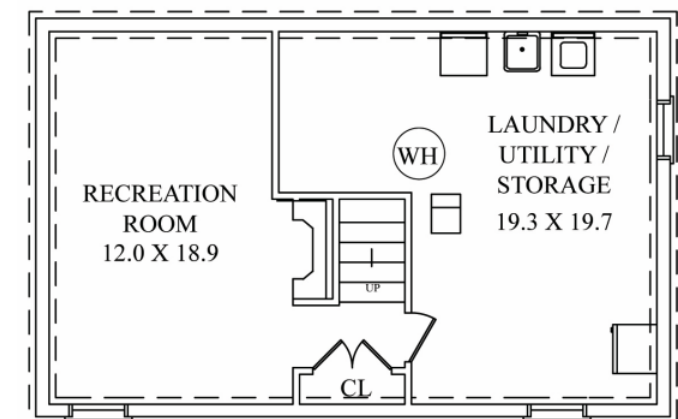
CELL: 973.936.9129  
OFFICE: 973.376.0033 x101  
EMAIL: [info@sueadler.com](mailto:info@sueadler.com)  
[sueadler.com/28Dogwood](http://sueadler.com/28Dogwood)



**FIRST LEVEL**



**SECOND LEVEL**



**LOWER LEVEL**

*All information deemed reliable but not guaranteed*