

Each Keller Williams office is individually owned and operated.



35 BROADVIEW TERRACE CHATHAM, NJ

Step through the front door of 35 Broadview Terrace into the welcoming entrance foyer with gleaming hardwood floors and detailed crown molding. Flow easily through the sun-filled, open floor plan into the Living Room, Dining Room, and Kitchen. The Living Room features oversized windows, a detailed white hearth and gas fireplace, and is just the right room for entertaining. The Dining Room is large, sophisticated and ready for your dinner parties with easy access to the gourmet Kitchen. In the gorgeous, remodeled Kitchen, you will find lots of sunlight from the large windows, granite countertops, stainless steel appliances, pull out shelving and a counter to dine at.







Enjoy the all-season Sunroom located off the Dining Room and Living Room. The Sunroom is flooded with sunlight through the three walls of windows. A relaxing room for you to enjoy a good book or as a first-floor playroom for the kids. Wander out the door to the wooden deck, which has space for a dining and sitting area. You have access to the kitchen from the deck for the ease of entertaining and eating dinner while watching the sunset.



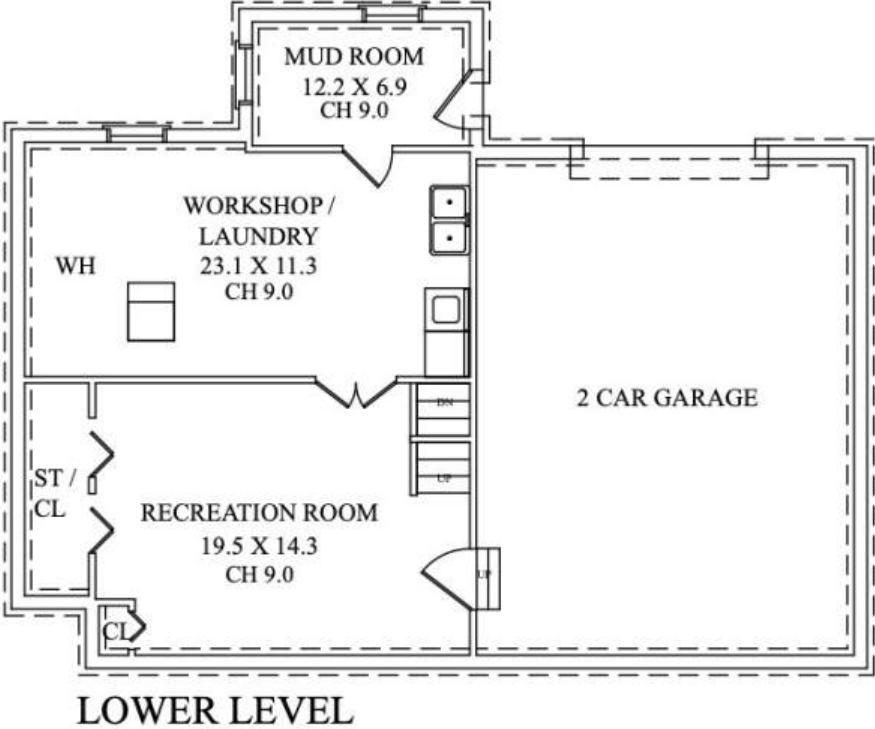
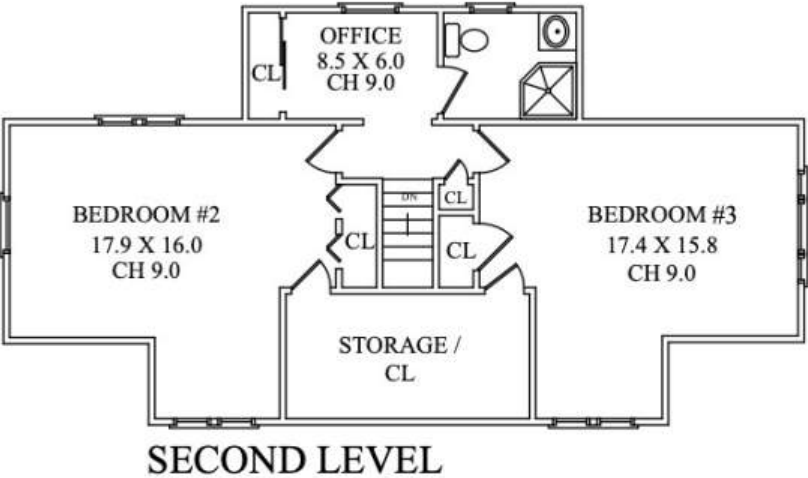
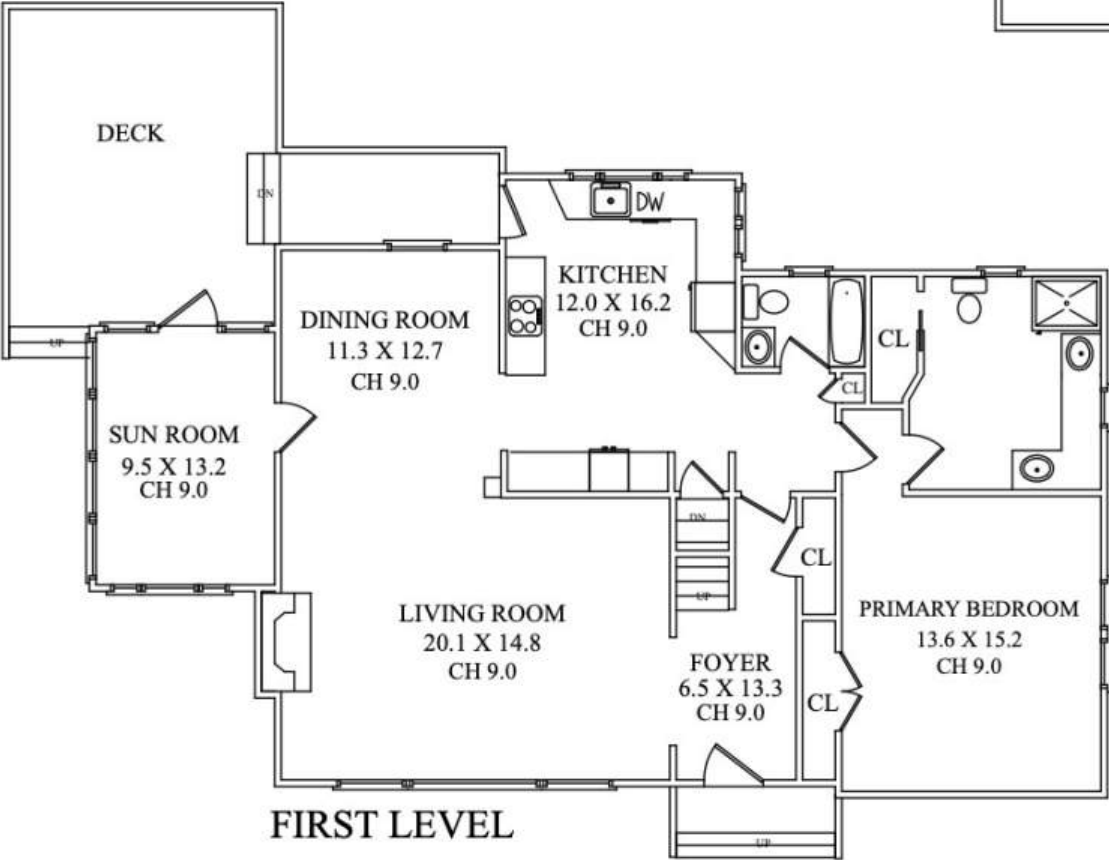
Flow next to the hallway, pass the full bath and into the serene oasis of the Master Suite. The large Master Bedroom has shining hardwood floors, large windows and a double closet. Plenty of room for a large bed and sitting area. The newly renovated master bath has two sinks with vanities that are connected by a makeup table and stunning hardwood floors. The large shower boasts marble tile, a bench and glass doors. A walk-in closet completes this heavenly bathroom.



The carpeted staircase takes you to the second level of the home. At the top of the stairs you will find a carpeted office alcove and a full bath. This office space can be used as a homework area for the kids, working from home or an upstairs play area. Each of the two oversized bedrooms on this floor have large windows, skylights and plenty of closet space. Find a storage area connecting the two bedrooms that can easily be made into a club house or secret hide out for the kids. The lower level of this home is fully carpeted, has tons of closet space and access to the very large two car garage. Off the finished playroom area, you will find the laundry area with a double slop sink, shelves and a wooden workshop area. A mudroom with flagstone flooring completes the lower level. The level back yard has plenty of room for entertaining or a playset. This house is perfect for the family who wants to be within walking distance of schools and downtown Chatham.



THE FLOOR PLAN



NOT TO SCALE - For Reference Purposes Only

INSIDE & OUT

FIRST LEVEL

- Foyer entry featuring coat closet, door to separate living space from master suite, entrance to living room, hardwood floors, crown molding, baseboard molding
- Spacious open floor plan featuring the Living Room, Dining room and Kitchen
- Living room features a gas fireplace and detailed white mantel, large windows, hardwood floors, crown molding and baseboard molding
- Dining room featuring a large window, hardwood floors, crown molding and baseboard molding
- Kitchen featuring granite countertops, wood cabinets, pantry with pull out shelving, stainless steel appliances, farm sink, glass tile backsplash, five windows, a double skylight, recessed lighting, access to deck, access to lower level and baseboard molding
- Year-round Sunroom featuring three walls of windows, ceiling fan, access to the deck and baseboard molding
- Full hallway bath featuring tub shower, floating sink, sconce lighting, one large window, tile floor, baseboard molding, linen closet located in hallway
- Master bedroom suite featuring large master bedroom with four large windows, double closet, sconce lighting, baseboard molding
- Master bathroom featuring two large windows, double vanity with make-up table, spa shower with a bench and glass doors, custom cabinets with two mirrored towers, marble tile floor, bench, large walk in closet, hardwood floors, recessed lighting, baseboard molding
- Carpeted staircase to the second level

SECOND LEVEL

- Upstairs hallway featuring a carpeted office alcove with a large window, cedar closet, pendant lighting, access to hallway bath, baseboard molding
- Hallway bath featuring a stall shower, pedestal sink, a large window, sconce lighting, and tile floor

- Bedroom #2 featuring a double closet, two large windows, skylight, recessed lighting, ceiling fan, a storage room connecting to the Bedroom #3 and baseboard molding
- Bedroom #3 featuring single closet, three large windows, double skylight, recessed lighting, ceiling fan, access to crawl space and baseboard molding

LOWER LEVEL

- Large carpeted recreation room with two double closets, utility closet, access to the two-car garage, double doors leading to laundry room
- Laundry room featuring washer, dryer, double slop sink, shelving, and lighting with access to Mudroom
- Storage room/workshop area featuring space for storage, large wooden work bench, large area for projects or additional storage, and window for natural light
- Mudroom featuring storage cabinet, flagstone floor, two windows and access to the driveway

ADDITIONAL FEATURES/ UPGRADES

- Remodeled kitchen with custom cabinets, new appliances and granite countertop (2014)
- New 4-season sunroom (2018)
- Renovated first floor hallway bath (2014)
- New master bath with granite countertops and custom cabinets (2014)
- New Anderson windows and front storm door (2014)
- 13kw standby generator with auto-transfer switch (2015)
- Re-insulated attic and crawl space (2015)
- New dormer siding, front gutters and trim (2017)
- New roof with lifetime warranty (2021)



All information deemed reliable but not guaranteed.



CELL: 973.524.0644
OFFICE: 973.376.0033 x101
EMAIL: info@sueadler.com
sueadler.com/35broadview

