

20 SHEFFIELD ROAD  
SUMMIT, NJ



Welcome to 20 Sheffield Road! This graceful 5 Bedroom, 3 Full, 2 Half Bath split level in Summit's sought after northside (Lincoln Elementary) has it all with close proximity to New York City, Midtown Direct train, excellent restaurants and shopping and all Summit has to offer. If you are seeking a picture-perfect home, lovingly maintained by its owner, in the BEST neighborhood for strolling, play and block parties, look no further. Don't be fooled by the outside ... this home is HUGE and enchanting at every turn.

Drive-up the astounding tree-lined street and stroll right up the charming brick walkway to the welcoming Front Porch perfect for rocking chairs and blooming planters. Step inside the Entry Foyer and prepare to be impressed by the relaxed vibe and sheer size of this home. Move into the blissful sun-drenched Living Room with a gracious wood-burning fireplace and a generous picture window where the light pours in. Flow easily into the luminous Dining Room with hardwood floors, a chair rail and another picture window bringing in the natural light. Curl up with a novel or enjoy a board game in the cozy Family Room with plenty of room to spread out and sliding doors out to a NEW Brick Patio. The Patio exudes a private and magical vibe and overlooks lovely stonework and custom beds for planting all your annuals. Back inside, the Dining Room flows seamlessly into the exquisitely renovated Chef's Kitchen featuring custom off white cabinetry, high-end stainless steel appliances, granite countertops, a Built-In Pantry, and a charming Breakfast Area to enjoy your morning coffee or a family meal.

Take a few steps down to the enormous Lower Level that adds tons of functional space to the home. A spacious Mud Room provides access from both the garage and driveway and includes 2 Closets so that all clutter will be neatly tucked away. A light and airy Recreation Room features NEW wood-look vinyl flooring, a Built-In Bar with seating for 5 and tons of storage space. Whether it's entertaining friends, play dates or movie night with the family, this room will be used endlessly. A pretty Half Bath and Laundry Closet round out the Lower Level.













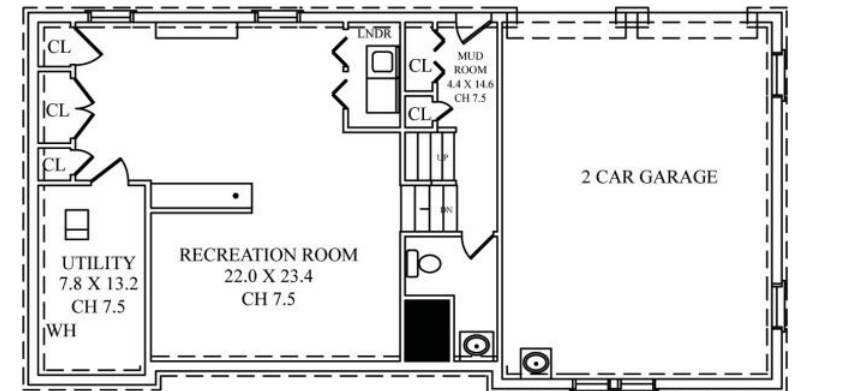
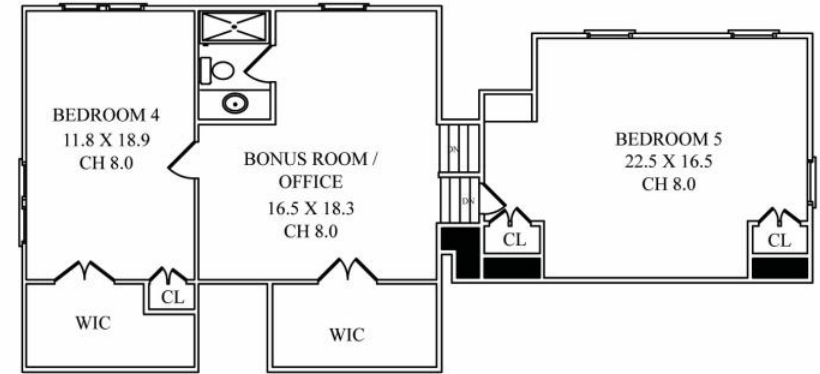
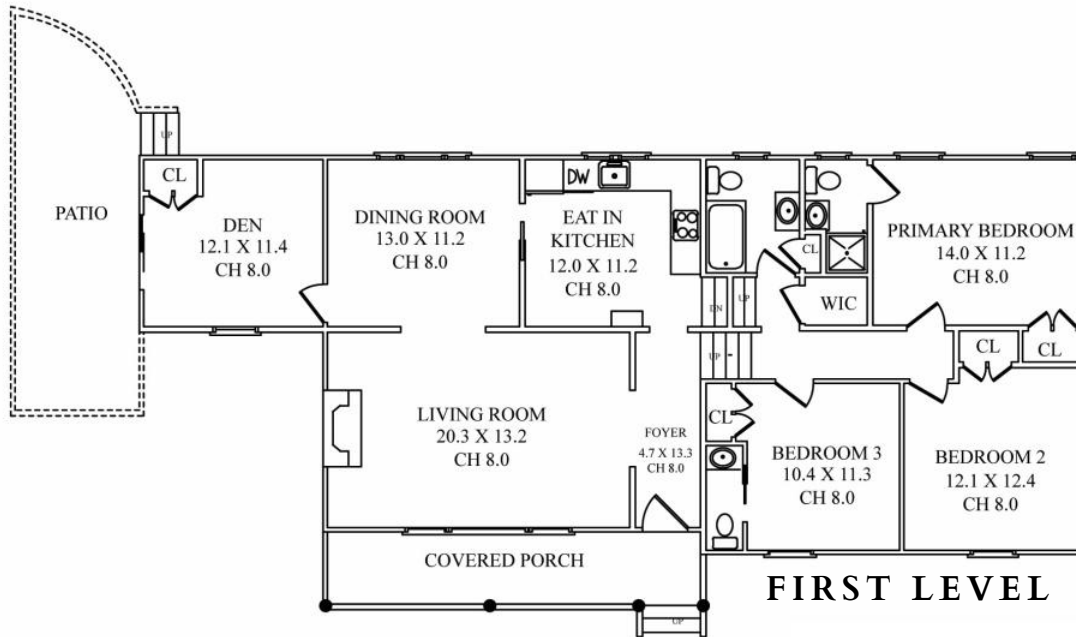
Ready to retire for the evening? Walk upstairs to the Second Level to find 3 of the home's 5 bedrooms. The Primary Bedroom Suite boasts tons of sunlight, 2 spacious Closets and a luxurious Bath with a glass door shower. Walk down the hallway to find Bedrooms 2 and 3, both steeped in sunlight and including generous closet space.

Bedroom 3 also has its own tasteful Half Bath for some additional privacy. Bedrooms 2 and 3 share the gorgeously renovated Full Hall Bath featuring a pedestal sink, jacuzzi tub and on trend gold fixtures.

Walk up a few steps and you will be in awe of the spacious, light and airy Loft Space/Teen Lounge perfect for watching TV, hanging out with friends or homework. The privacy of this level also affords an option for multi-generational living. A Double Door Walk In Closet provides plenty of storage space off of the lounge. Bedroom 4 boasts tons of sunlight, designer carpeting, a huge Walk In Closet and an additional Shoe Closet. Walk up a few steps to MASSIVE Bedroom 5 with a vaulted ceiling, a built in bookshelf and 2 Double Door Closets. Bedrooms 4 and 5 enjoy complete privacy with their own tastefully updated Full Bath.

This home, lovingly and meticulously maintained throughout, has it all. With its proximity to New York City, easy access to Midtown Direct train service, sought after school district and convenience to fantastic shopping and restaurants in downtown Summit, you will undoubtedly want to call 20 Sheffield Road home.

# INSIDE & OUT



NOT TO SCALE - This floor plan is provided for illustration purposes only.  
Room positions and dimensions are approximate and should be independently measured for accuracy

## FIRST LEVEL

- Entry Foyer featuring entry door with decorative oval glass, chandelier, hardwood floors, baseboard molding, crown molding
- Living Room featuring oversized entry, wood burning fireplace with brick surround and hearth, picture window, hardwood floors, crown molding, baseboard molding, sconces, oversized archway to Dining Room
- Dining Room featuring picture window, chair rail, hardwood floors, crown molding, baseboard molding
- Family Room featuring NEW (2020) sliding doors with inset blinds to Brick Patio, hardwood floors, Double Door Closet, chandelier, crown molding, baseboard molding, window with woven shade
- Gourmet Chef's Kitchen featuring custom wood cabinetry including decorative glass door cabinetry, granite countertops, tumbled tile backsplash, tile flooring, recessed lighting, Electrolux stainless refrigerator/freezer, DCS stainless 5 burner oven/range, fully integrated Miele dishwasher, custom hood, decorative backsplash behind oven/range, pot filler, recessed lighting, Breakfast Area, Built In Pantry, crown molding with rope detail, baseboard molding, open to Lower Level

## SECOND LEVEL

- Second Level Landing featuring hardwood floors, baseboard molding, flush mount light fixture
- Primary Bedroom Suite featuring 2 oversized windows, 2 large Closets, carpeting, baseboard molding, crown molding, flush mount light fixture, crystal hardware, Bathroom featuring tumbled look floor and wainscoting tile with mosaic accents, chandelier, vanity with porcelain washbasin sink, frameless glass door shower with tile surround, rain showerhead
- Bedroom 2 featuring windows with custom shades at 2 exposures, hardwood floors, Double Door Closet, chandelier, baseboard molding, crown molding
- Ensuite Bedroom 3 featuring Double Door Closet, oversized window with woven shade, carpeting, baseboard molding, crown molding, light with drum shade, Half Bath featuring beadboard wainscoting, vanity with Corian countertop, tile flooring, flush mount light fixture, crown molding
- NEWLY RENOVATED (2021) Full Hall Bath featuring on trend gold fixtures throughout, pedestal sink, tumbled look floor tile, Jacuzzi tub/shower combination with designer tile surround, baseboard molding, crown molding, chandelier, Linen Closet

## THIRD LEVEL

- Loft/Teen Lounge Area featuring carpeting, recessed lighting, sconce, baseboard molding, crown molding, Double Door Walk In Closet
- Full Hall Bath featuring custom built wall to wall vanity with quartz countertop, chandelier, tile flooring, tile wainscoting with decorative border, shower with tile surround and sliding glass door, crown molding
- Bedroom 4 featuring Double Door Walk In Closet, Shoe Closet, carpeting, oversized windows at 2 exposures, baseboard molding, crown molding

## FOURTH LEVEL

- Bedroom 5 featuring vaulted ceiling, 2 Double Door Closets, carpeting, recessed lighting, built in bookshelf, windows at 2 exposures, eave storage

## LOWER LEVEL

- Mud Room/Lower Level Landing featuring French door to backyard/driveway, Double Door Coat Closet, Closet with floor to ceiling shelving, tile flooring, door to Garage, flush mount light fixture, bookshelf under staircase
- Recreation Room featuring NEW wood look vinyl flooring throughout, recessed lighting, Built In Bar with seating for 4, Custom Built In with open and concealed storage, 2 Closets with shelving, Double Door Closet, Utility Room, crown molding, baseboard molding
- Double Door Laundry Closet with built in upper cabinetry, Kenmore washer and dryer
- Half Bath featuring beadboard wainscoting, wallpaper, pedestal sink, storage nook, crown molding, sconces, flush mount light fixture
- 2 Car Garage with tons of storage, electric doors, utility sink

## FRONT & BACK

- Winding brick front walkway
- Covered Porch/Entry with flagstone and brick trim
- Driveway redone September 2020
- Cobblestone entry at driveway
- Brick Patio and Walkway (NEW 2020) with stone walls, built in beds
- Fence freshly painted February 2021

## ADDITIONAL FEATURES & UPGRADES

- Painted soothing hues throughout





CELL: 973.936.9129

OFFICE: 973.376.0033 x101

EMAIL: [info@sueadler.com](mailto:info@sueadler.com)

[sueadler.com/20Sheffield](http://sueadler.com/20Sheffield)

**sueadler**  **team**  
THE #1 KELLER WILLIAMS TEAM IN NEW JERSEY

**kw** PREMIER  
PROPERTIES  
KELLERWILLIAMS.