



20 YARMOUTH ROAD

CHATHAM, NJ





Welcome to 20 Yarmouth Street in sought-after Chatham Township where you are sure to be charmed at every turn! The beautiful tree-lined cul-de-sac street instantly draws you in. This charming 4 Bedroom and 2 Full Bath Cape simply cannot be missed! Enter through the charming front door and you are in the warm living room with its exceptional statement wood burning fireplace. Next flow to the Dining Room where you can host your next dinner party while looking out the bay window and the lush backyard. Cooking is ideal in the picture-perfect Kitchen featuring tons of custom warm wood cabinetry, white appliances, and a window overlooking the park-like property.





The spacious and bright Family Room is an entertainer's dream with its gas fireplace and vaulted ceilings. Sliding doors open up to an enormous Deck large enough for both dining and entertaining areas. For convenience two bedrooms are located on the first floor. Each of the bedrooms has ample closet space and tons of natural sunlight. A Full Bath and access to the two-car garage rounds out the first floor.



When you walk up to the second level you will find two additional spacious bedrooms with lots of closet space, a Full Bathroom and walk-up Attic. The Lower level is ready for play with a large Recreation Room and a kitchenette for all your needs. You will also find a large Storage Room with a laundry area and tons of storage opportunities and a built-in woodworking bench. With its prestigious neighborhood, close proximity to Midtown Direct train and New York City, top-notch schools and convenience to Chatham's fantastic shopping and restaurants, 20 Yarmouth is delightful in every way!

INSIDE & OUT

FIRST LEVEL

- Living Room featuring carpeted floors (hardwood underneath), wood burning fireplace, flagstone hearth, coat closet, baseboard molding
- Dining Room featuring carpeted floors (hardwood underneath), large bay window, hanging light, access to the second level, baseboard molding
- Kitchen featuring hardwood floors, granite countertops, tile backsplash, white appliances, two windows, custom pantry, glass display cabinets, access to lower level, baseboard molding
- Family Room featuring hardwood floors, gas fireplace with granite trim, vaulted ceilings, ceiling fan, recessed lighting, desk area, built-ins, slider to deck, six windows, baseboard molding
- Bedroom #1 featuring carpeted floors, two closets, two windows, baseboard molding
- Bedroom #2 featuring carpeted floors, one closet, two windows, flush mount lighting
- Full Bath featuring tile floor, single vanity with wood cabinets, one window, one cabinet, tub/shower with sliding glass door, recessed lighting, baseboard molding

SECOND LEVEL

- Carpeted staircase up to foyer
- Foyer featuring flush mount lighting, two cedar closets, access to the walk in attic
- Bedroom #1 featuring carpeted floors, two windows, one double closet
- Bedroom #2 featuring carpeted floors, one double closet, one single cedar closet, two windows, two built-in drawers, flush mount lighting
- Full Bath featuring one double closet, one single closet, tile floor, tub/shower with glass sliders, one sink and vanity, one window, heat lamp, recessed lighting

LOWER LEVEL

- Carpeted staircase down to large Recreation Room featuring laminate wood floors, two windows, sconce lighting, kitchenette with wood cabinets, sink and shelving, white wood paneled walls
- Large Storage Room featuring built-in woodworking bench, laundry area with washer and dryer, shelving for storage, one window, one freezer, one refrigerator and freezer, cement floors

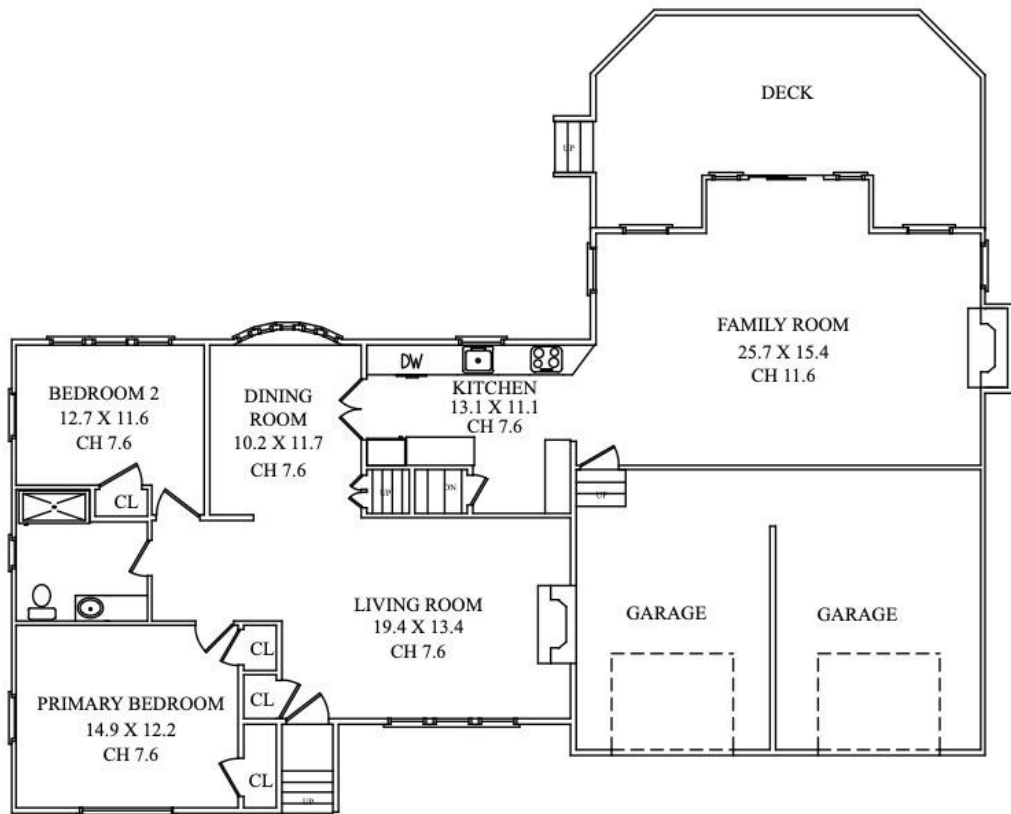
FRONT & BACKYARD

- Two car garage with storage
- Flat fenced in backyard
- Irrigation system for front and backyard
- Azek deck
- Mature landscaping
- Whole house generator
- Invisible Fence

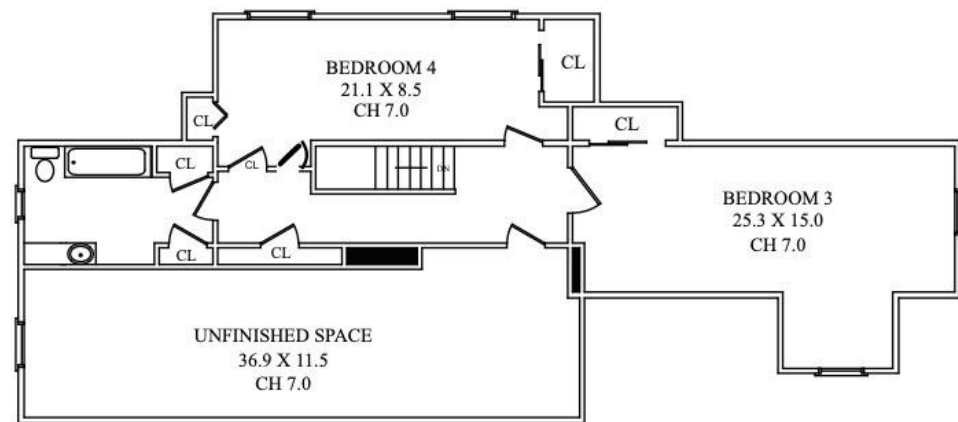
ADDITIONAL FEATURES & UPGRADES

- New hot water heater- 2015
- New Azek Deck- 2010
- Expanded second floor- 1999
- New Heating and Air Conditioning - single zone-2019
- New Granite Kitchen Countertops - 1999
- New Kitchen Refrigerator and Freezer - 2019
- Added on Family Room addition - 1999
- Whole house generator- 2019
- Driveway sealed- 2019

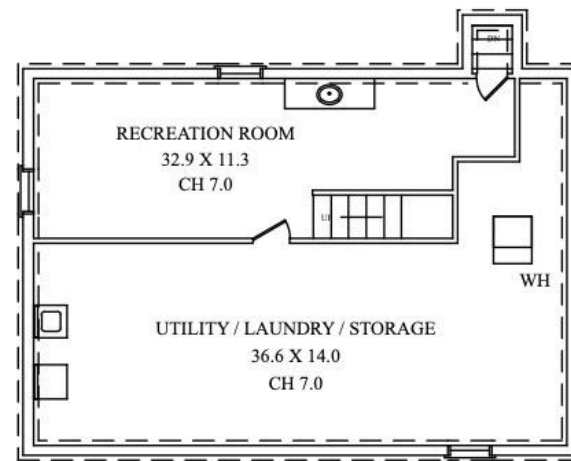
THE FLOORPLAN



FIRST LEVEL



SECOND LEVEL



LOWER LEVEL



CELL: 973.936.9129

OFFICE: 973.376.0033 x101

EMAIL: info@sueadler.com

sueadler.com/20Yarmouth

